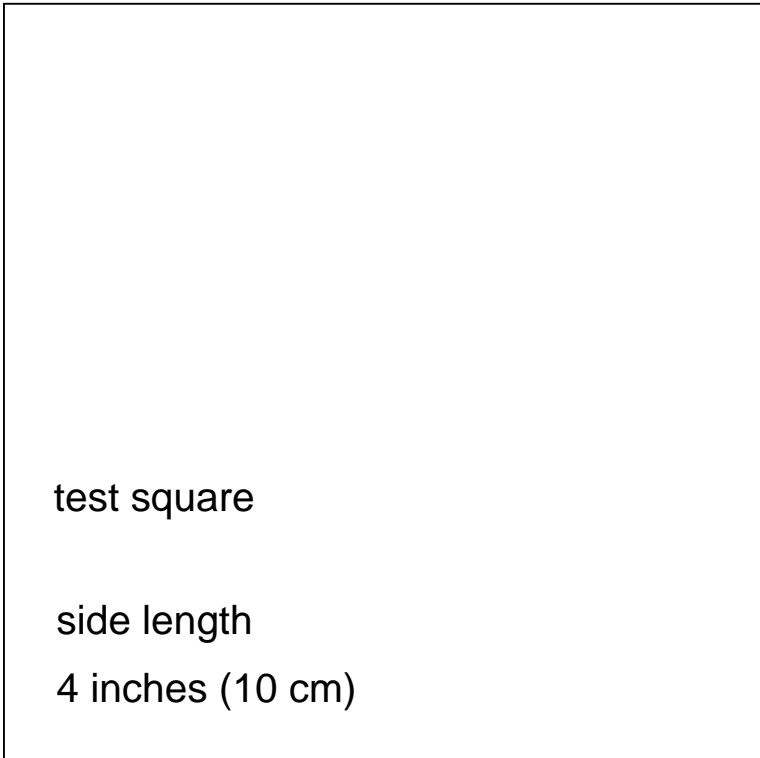




2a



PLEAT  
PLI  
PLEGUE

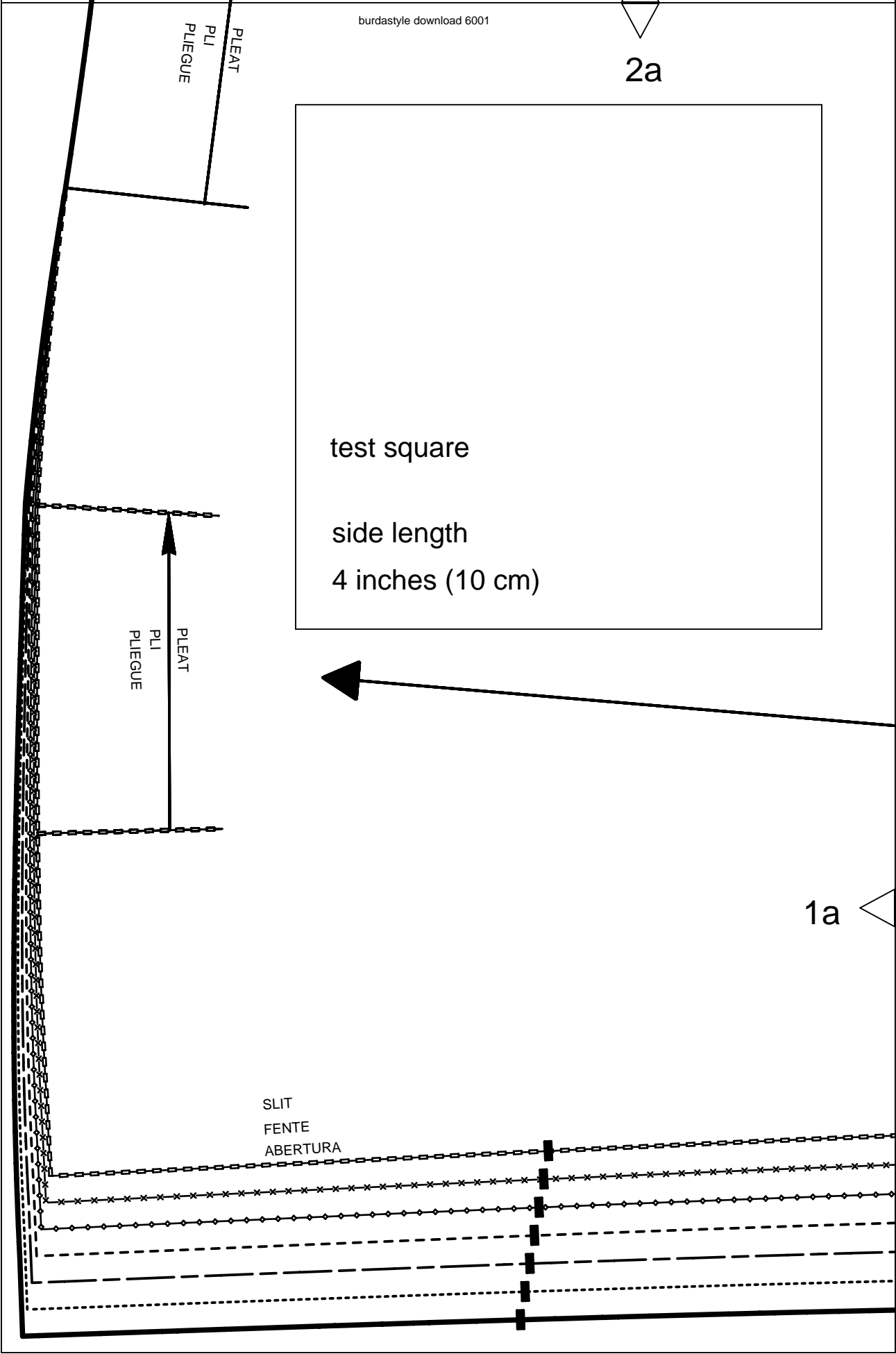
PLEAT  
PLI  
PLEGUE



1a



SLIT  
FENTE  
ABERTURA



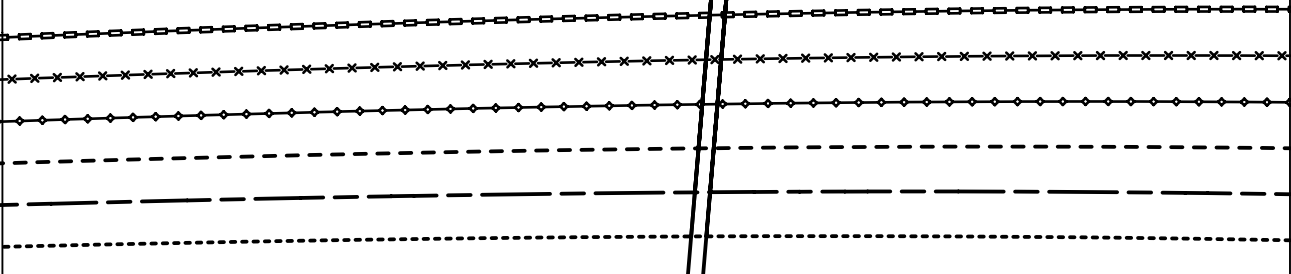
2b

LENGTHEN OR SHORTEN HERE  
RALLONGER OU RACCOURCIR ICI  
ALARGAR O ACORTAR AQUI

1b

STRAIGHT GRAIN  
DROIT FIL  
SENTIDO HILO

1a



2c

6

UPPER SLEEVE  
DESSUS DE MANCHE  
MANGA SUPERIOR



SEAM ALLOWANCE INCLUDED  
AVEC VALEUR DE COUTURE  
CON MARGEN DE COSTURA

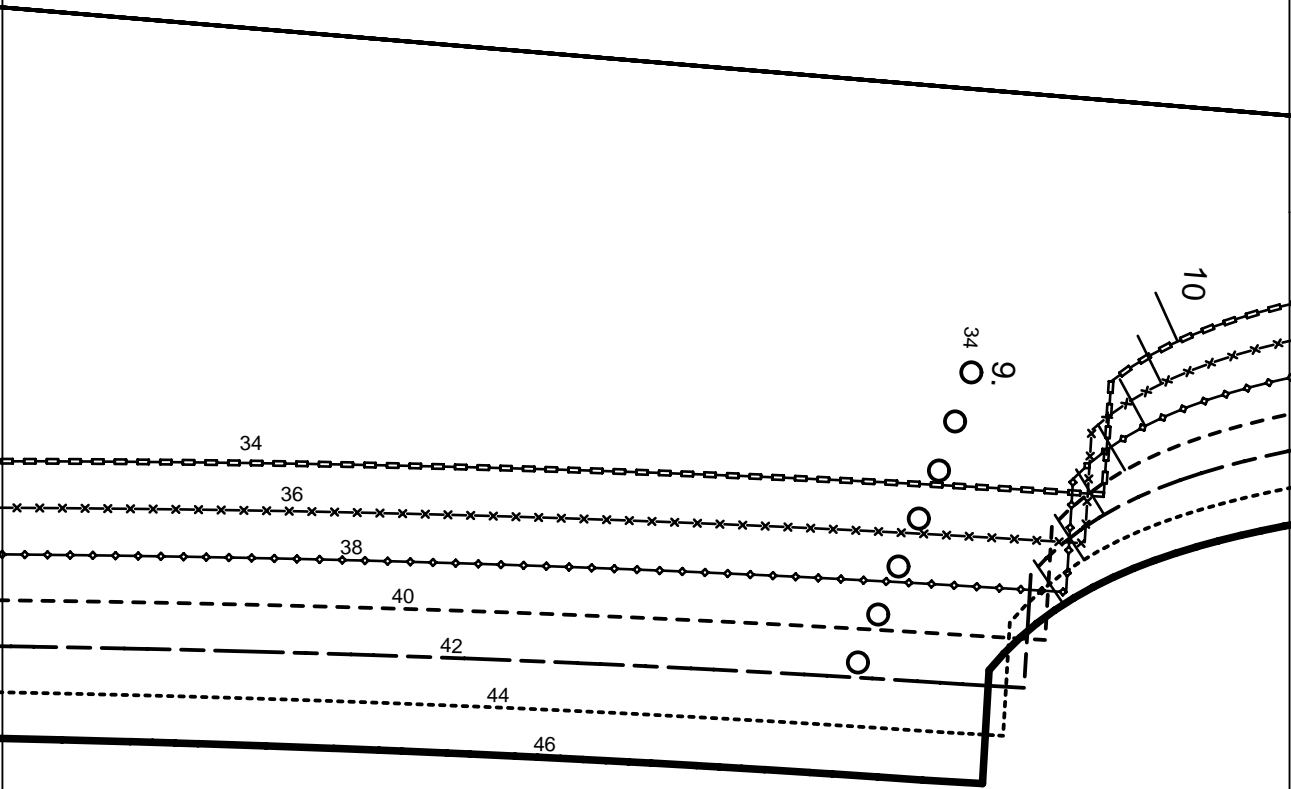
(1,5cm)

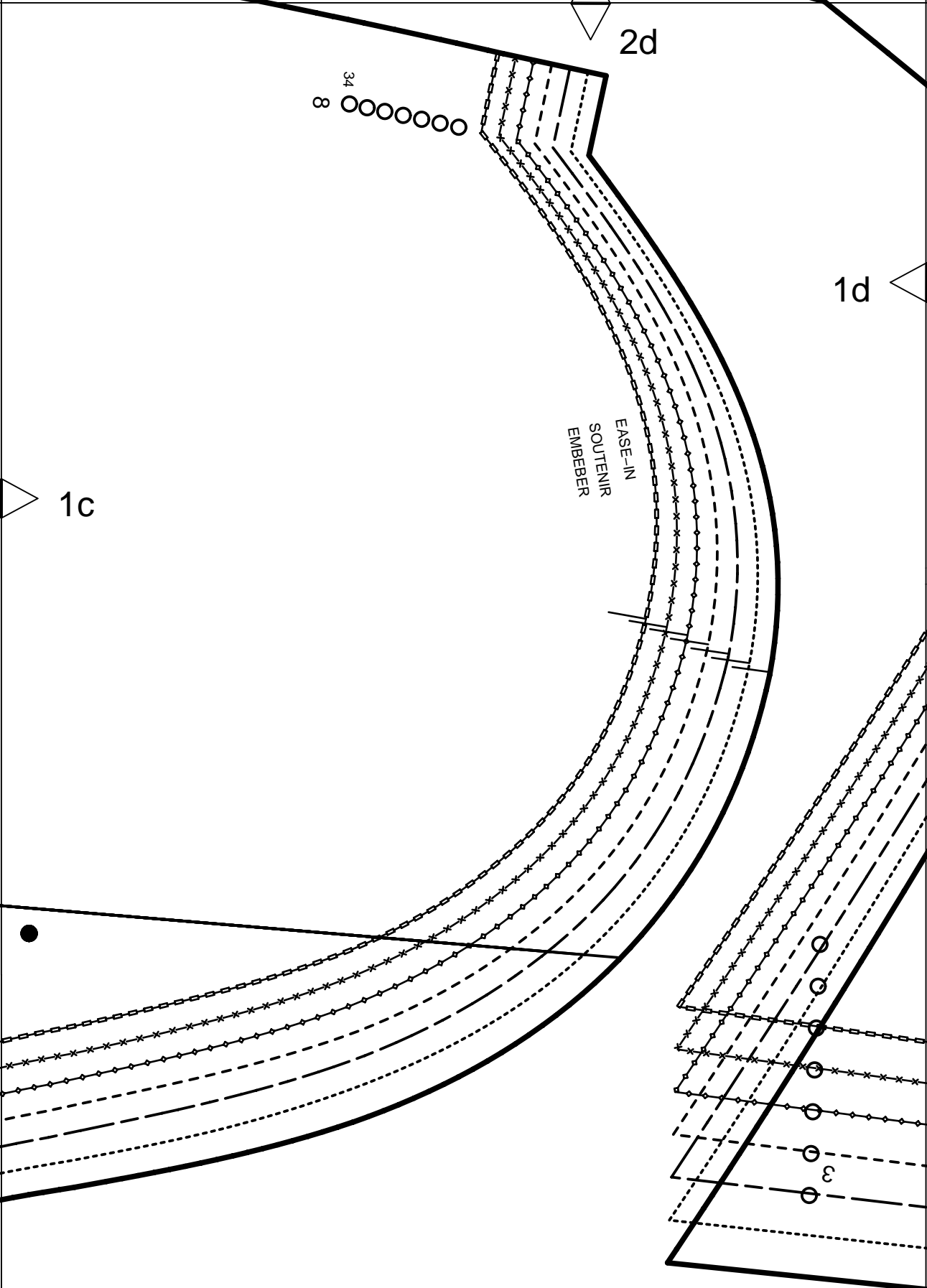
6001

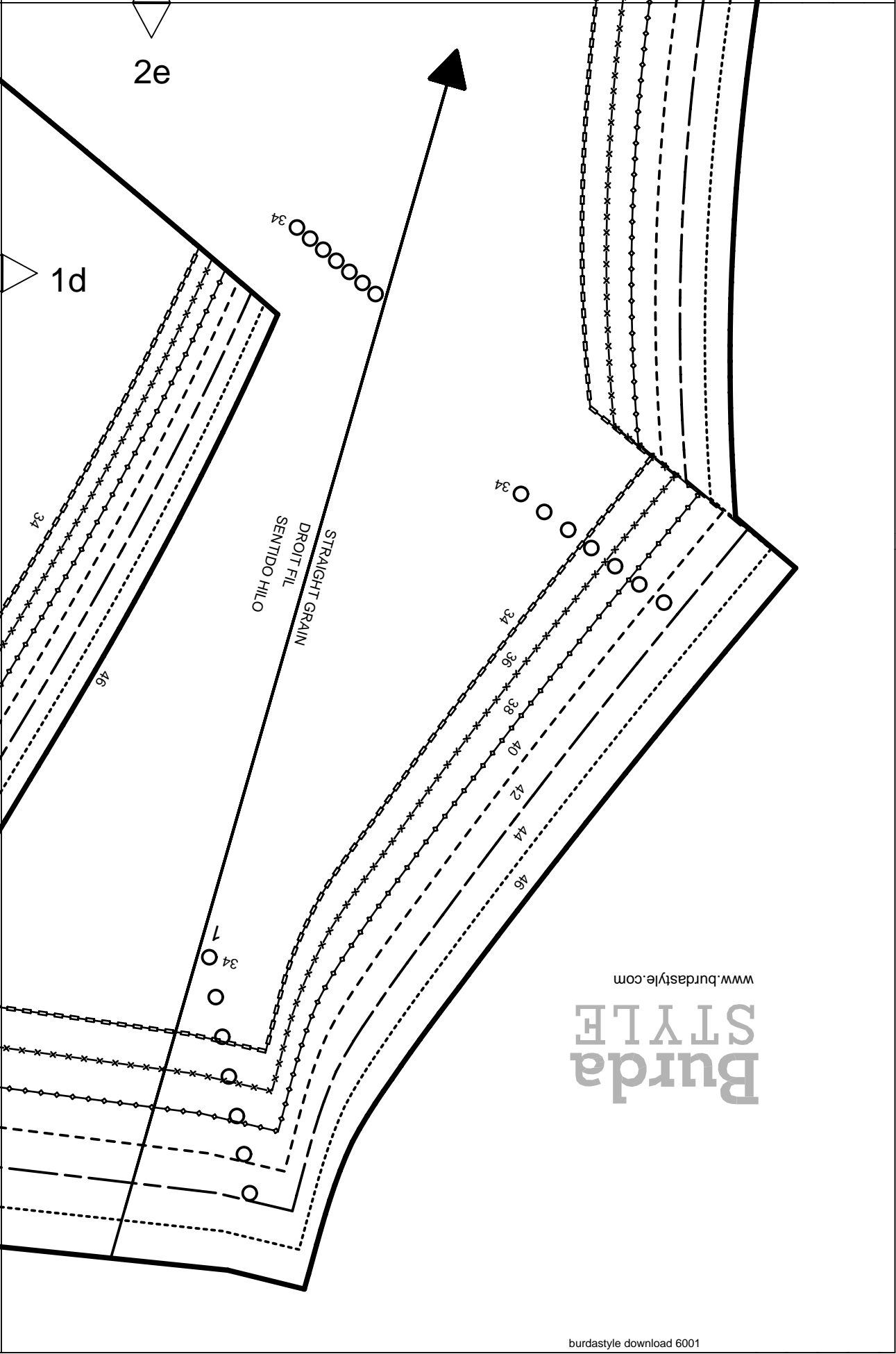
Burda  
STYLE  
www.burdastyle.com

1c

1b







2e

1d

STRAIGHT GRAIN  
DROIT FIL  
SENTIDO HILO

34

46

34

34

36

38

40

42

44

46

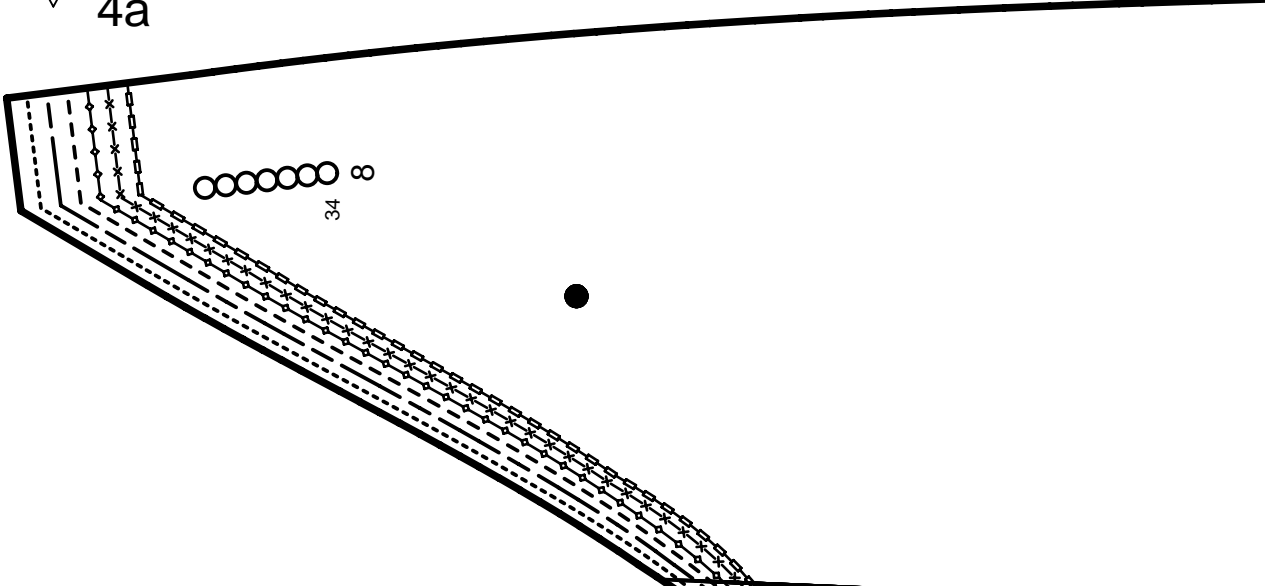
1

34

www.burdastyle.com

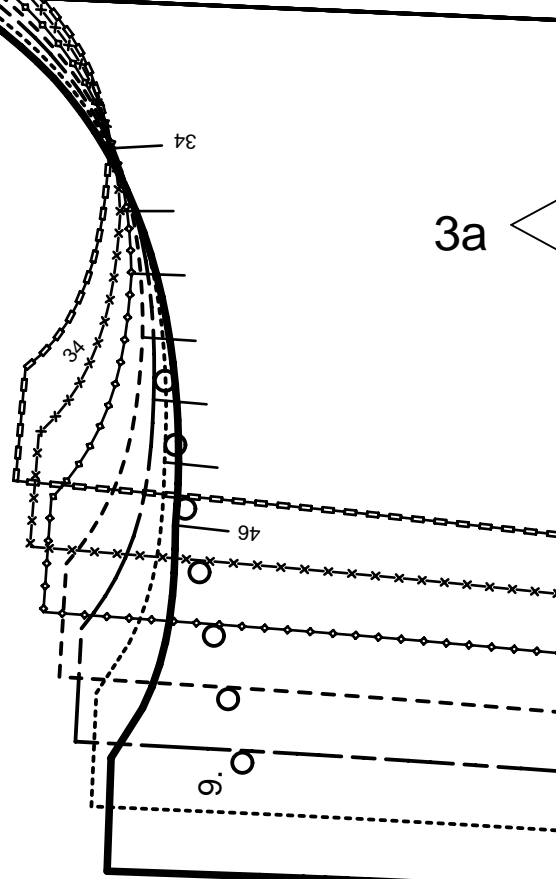
Burda  
STYLE

4a



34

3a



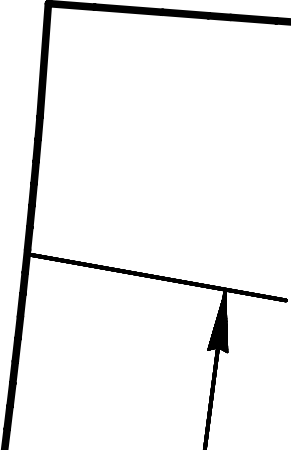
34

35

46

50

2a



4b

STRAIGHT GRAIN  
DROIT FIL  
SENTIDO HILO

3a

LENGTHEN OR SHORTEN HERE  
RALLONGER OU RACCOURCIR ICI  
ALARGAR O ACORTAR AQUI

34

36

38

40

42

44

46



2b

3b



4c

3c

7

UNDER SLEEVE  
DESSOUS DE MANCHE  
MANGA INFERIOR



SEAM ALLOWANCE INCLUDED  
AVEC VALEUR DE COUTURE  
CON MARGEN DE COSTURA

6001

Burda  
STYLE

www.burdastyle.com

5/8"  
(1,5cm)

3b

2c



4d

3c

PLEAT  
PLI  
PLIEGUE

ABERTURA  
FENTE  
SLIT

11

34

2d

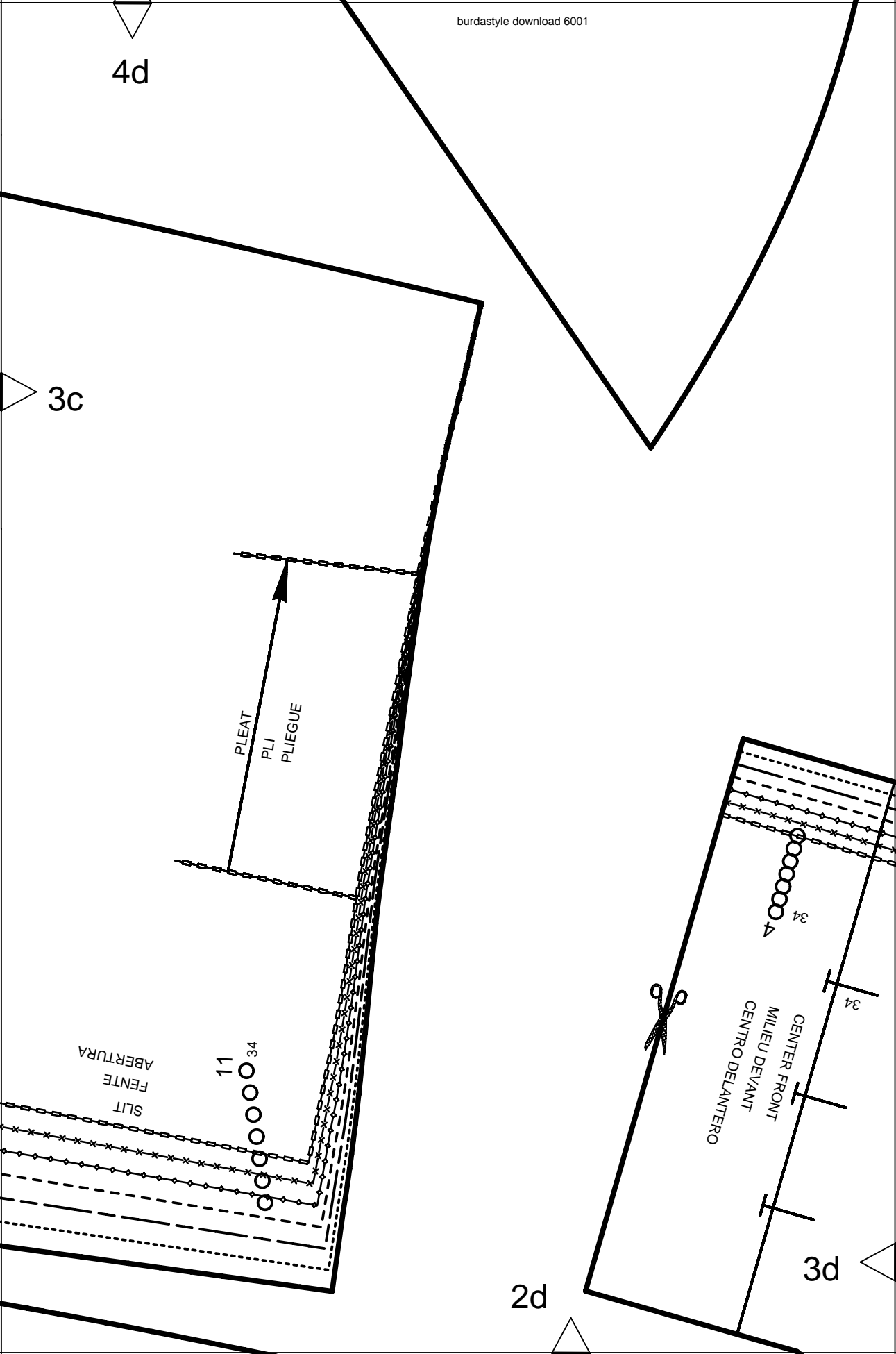


CENTER FRONT  
MILIEU DEVANT  
CENTRO DELANTERO

3d

34

34



BURDA  
STYLE

www.burdastyle.com

SENTIDO HILLO  
DROIT FIL  
STRAIGHT GRAIN

BELT  
CEINTURE  
CINTURON

34  
46

34  
36  
38  
40  
42  
44  
46



4e

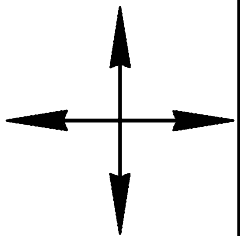
SEAM ALLOWANCE INCLUDED  
AVEC VALEUR DE COUTURE  
CON MARGEN DE COSTURA  
5/8" (1.5cm)

6001



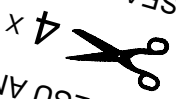
8

CUFF  
POIGNET  
PUÑO



UNDERLAP  
SOUS-PATTE  
PATA INFERIOR

FRONT YOKE  
EMPIECMENT DEVANT  
CANESU ANTERIOR  
SEAM ALLOWANCE INCLUDED  
AVEC VALEUR DE COUTURE  
CON MARGEN DE COSTURA  
5/8" (1.5cm)



2

3d

2e

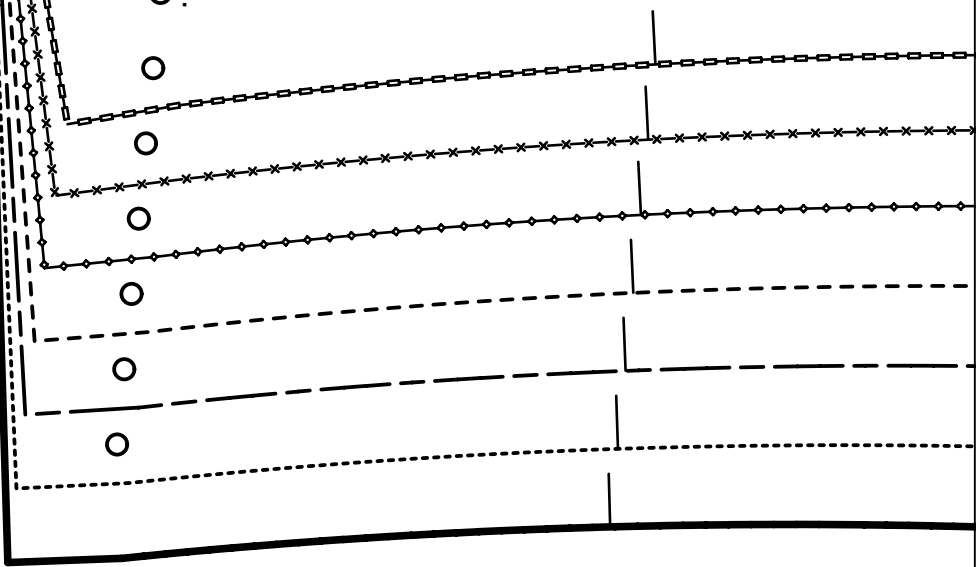
34

6a

5a



34 6.



4a



6b

5a

LENGTHEN OR SHORTEN HERE  
RALLONGER OU RACCOURCIR ICI  
ALARGAR O ACORTAR AQUI

Burda  
STYLE  
www.burdastyle.com

5b

34

36

38

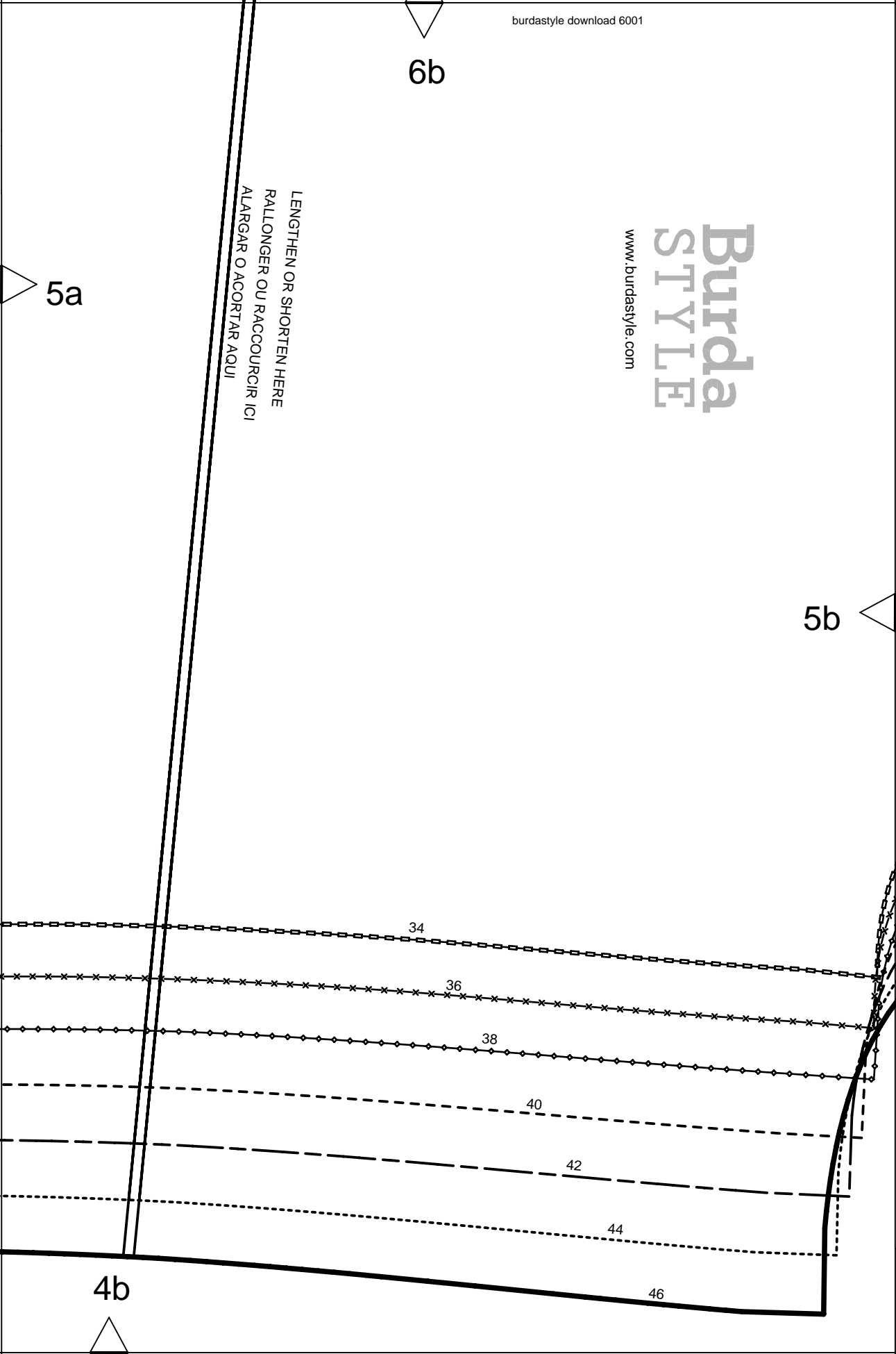
40

42

44

4b

46



6c



1 x

5/8"

(1.5cm)

ON THE FOLD  
 DANS LA PLIURE DU TISSU  
 CON CANTO DOBLADO  
 SEAM ALLOWANCE INCLUDED  
 AVEC VALEUR DE COUTURE  
 CON MARGEN DE COSTURA  
 6001

4

BACK  
DOS

ESPALDA

5b

5c

4c

5d

6d

Burda  
STYLE

www.burdastyle.com

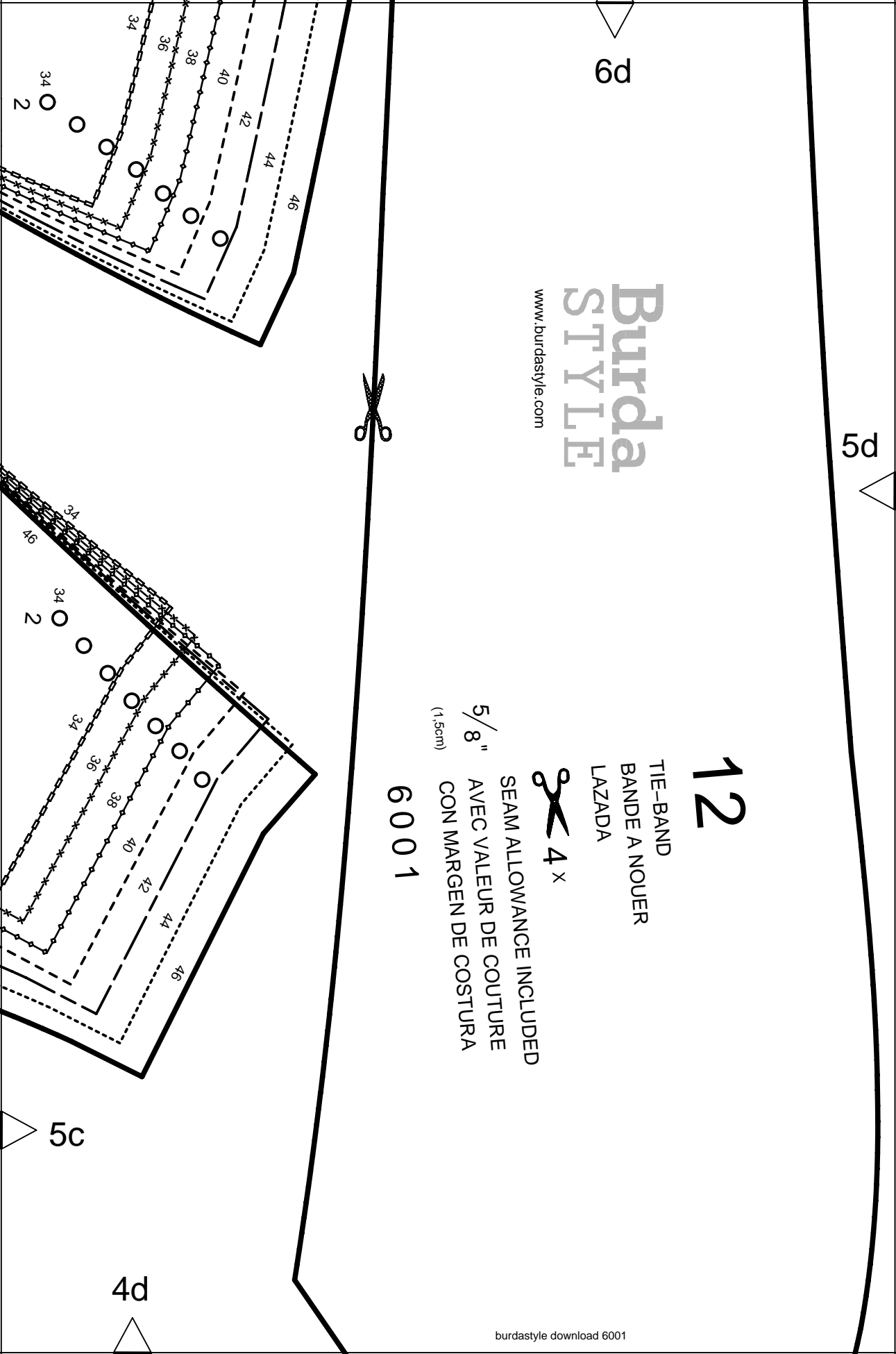
12

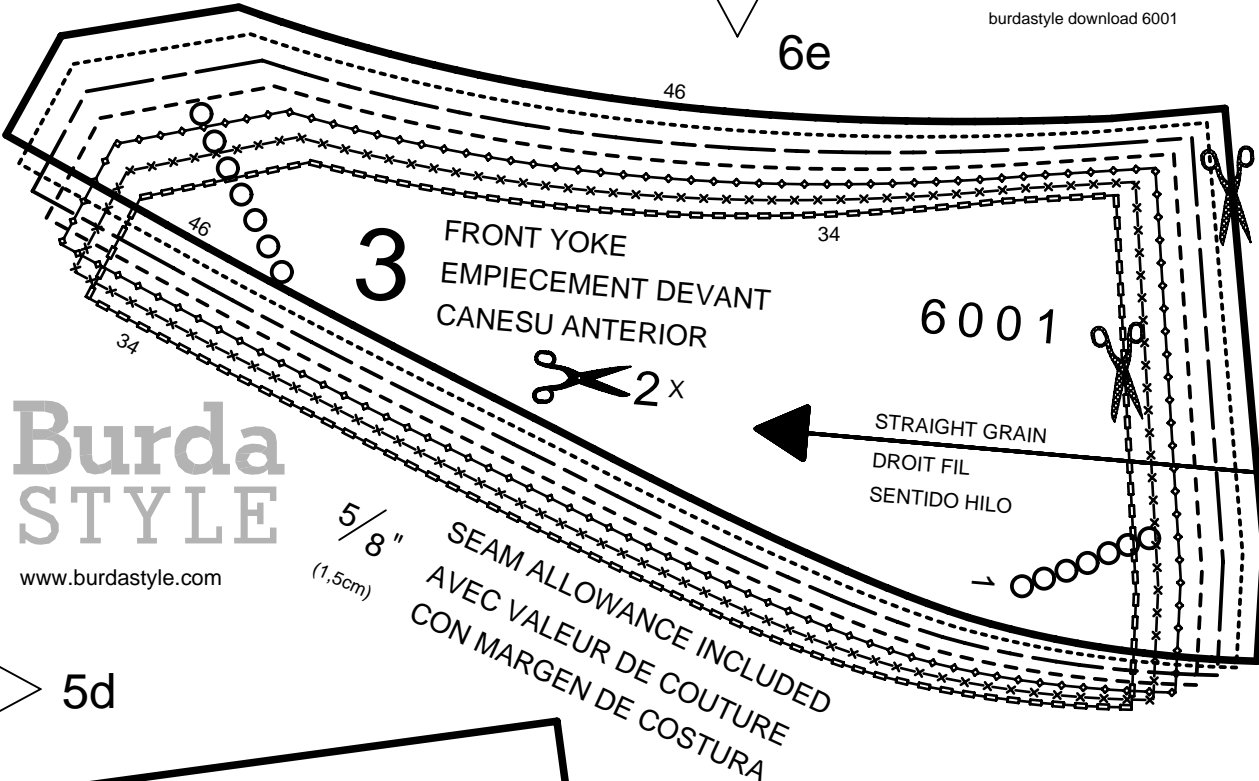
TIE-BAND  
BANDE A NOUER  
LAZADA



SEAM ALLOWANCE INCLUDED  
AVEC VALEUR DE COUTURE  
CON MARGEN DE COSTURA  
5/8" (1,5cm)

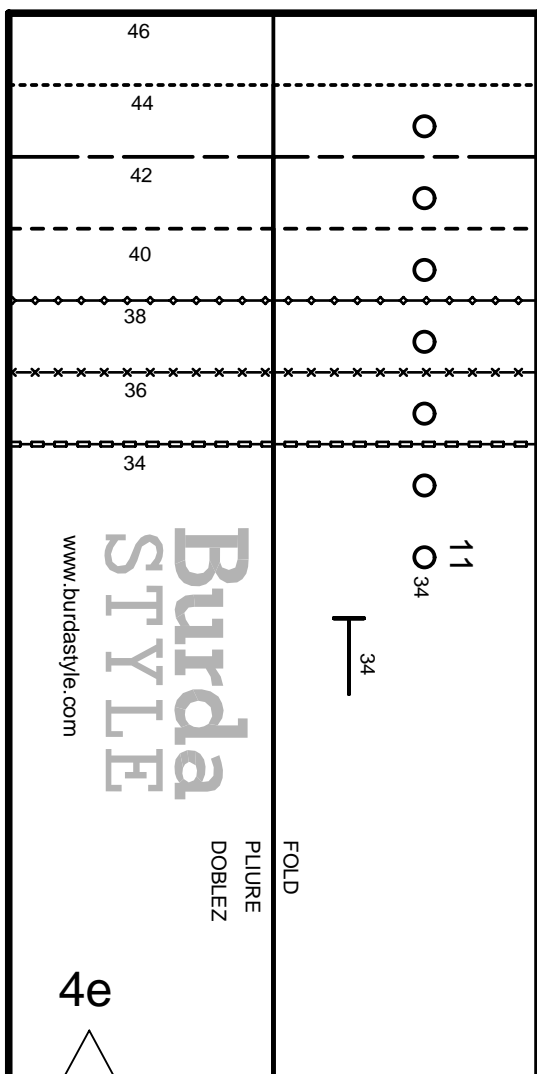
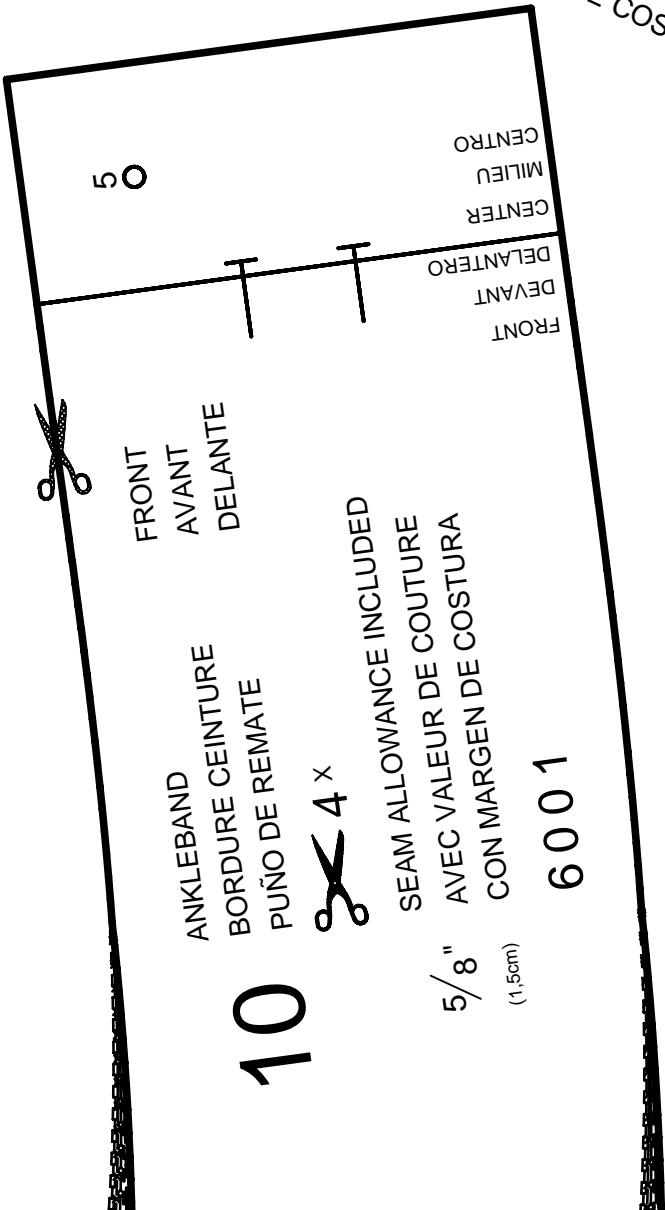
6001





**Burda**  
**STYLE**  
www.burdastyle.com

5d



4e



8a

WAIST  
TAILLE  
CINTURA

34

CENTER FRONT  
MILIEU DEVANT  
CENTRO DELANTERO

FACING FOLD  
PAREMENTURE PLIURE  
VISTA DOBLEZ

FOLD  
PLIURE  
DOBLEZ

STRAIGHT GRAIN  
DROIT FIL  
SENTIDO HILO

EDGE  
BORD  
CANTO

5



7a

WAIST  
TAILLE  
CINTURA



6a

8b

46

34

34

4

CENTER BACK FOLD STRAIGHT GRAIN  
PLIURE DU TISSU MILIEU DOS DROIT FIL  
CENTRO POSTERIOR DOBLEZ DIR.HILO

CENTER BACK FOLD STRAIGHT GRAIN  
PLIURE DU TISSU MILIEU DOS DROIT FIL  
CENTRO POSTERIOR DOBLEZ DIR.HILO

7a

7b

6b

8c

7c

11

ANKLEBAND  
BORDURE CEINTURE  
PUÑO DE REMATE

BACK  
ARRIERE  
DETRAS

34

46

34 O  
6.



ON THE FOLD  
DANS LA PLIURE DU TISSU  
CON CANTO DOBLADO

Burda  
STYLE

www.burdastyle.com

5/8"

(1,5cm)

SEAM ALLOWANCE INCLUDED  
AVEC VALEUR DE COUTURE  
CON MARGEN DE COSTURA

6001

7  
34 O

CENTER BACK FOLD STRAIGHT GRAIN  
PLIURE DU TISSU MILIEU DOS DROIT FIL  
CENTRO POSTERIOR DOBLEZ DIR.HILO



2x

5/8"  
(1,5cm)

5

BACK YOKE  
EMPIECEMENT DOS  
CANESU POST.

ON THE FOLD  
DANS LA PLIURE DU TISSU  
CON CANTO DOBLADO

SEAM ALLOWANCE INCLUDED  
AVEC VALEUR DE COUTURE  
CON MARGEN DE COSTURA

6001

Burda  
STYLE  
www.burdastyle.com

7b

6c

7d

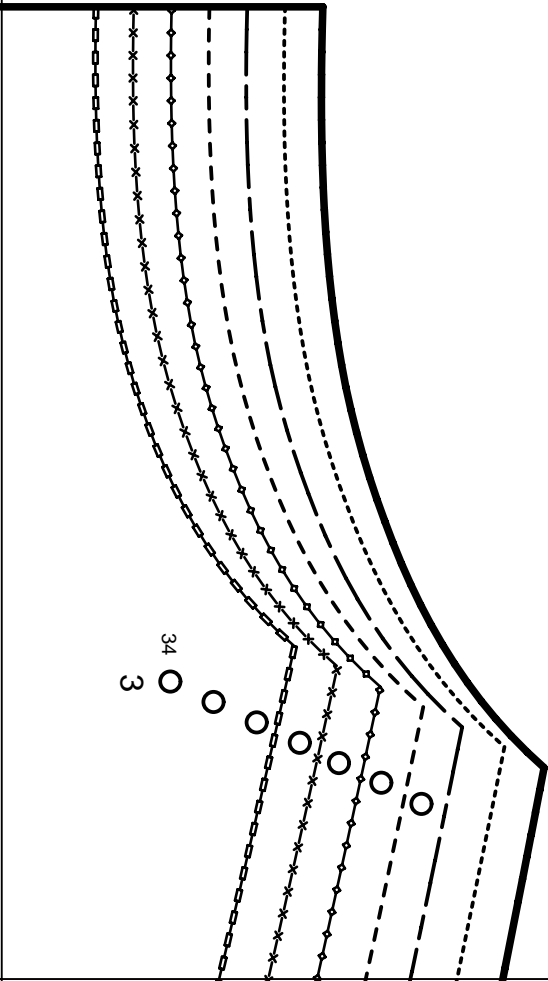
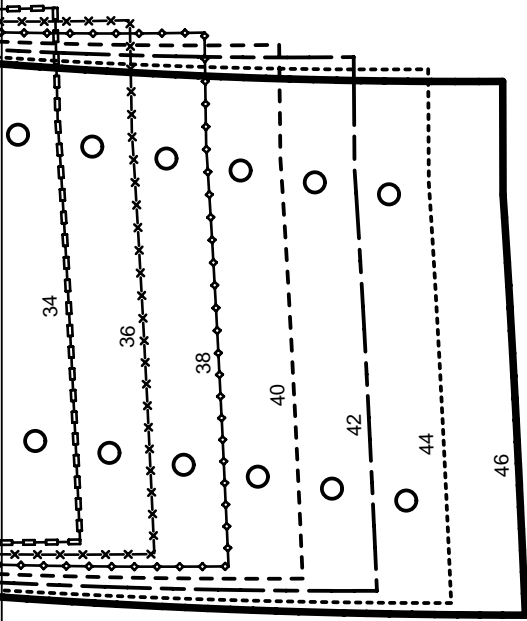
TOP  
EN HAUT  
ARRIBA

STRAIGHT GRAIN  
DROIT FIL  
SENTIDO HILO

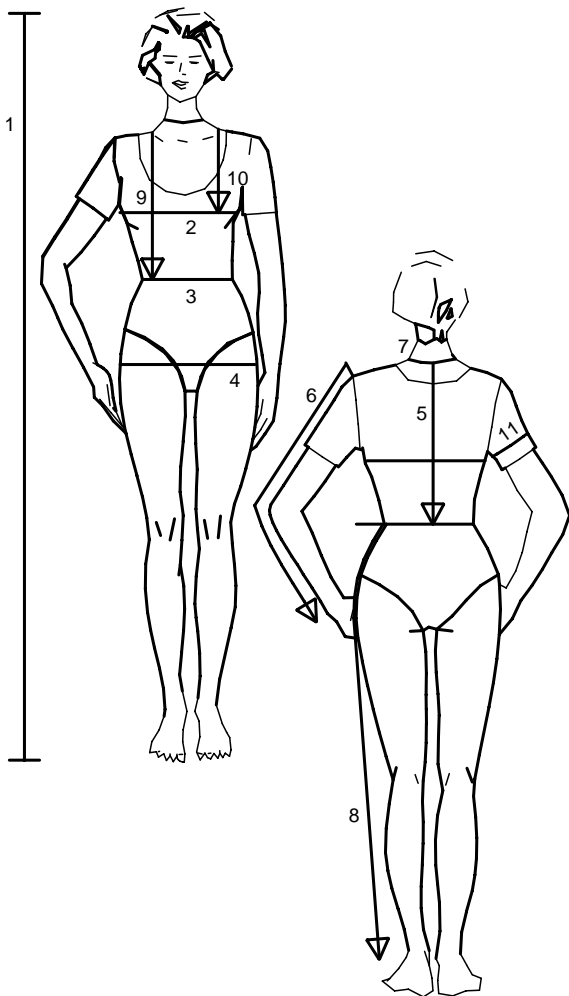
6d

8d

7c



Size Taille Talla		32	34	36	38	40	42	44	46	48	50	52	54	56	58	60
1	inches	66 1/4	66 1/4	66 1/4	66 1/4	66 1/4	66 1/4	66 1/4	66 1/4	66 1/4	66 1/4	66 1/4	66 1/4	66 1/4	66 1/4	66 1/4
	cm	168	168	168	168	168	168	168	168	168	168	168	168	168	168	168
2	inches	30	31 1/2	33	34 3/4	36 1/4	37 3/4	39 1/2	41	43 1/2	45 1/2	48	50 1/2	52 3/4	55 1/4	57 1/2
	cm	76	80	84	88	92	96	100	104	110	116	122	128	134	140	146
3	inches	23	24 1/2	26	27 3/4	29 1/4	30 3/4	32 1/2	34	36 1/4	38 3/4	41	43 1/2	45 1/2	48	50 1/2
	cm	58	62	66	70	74	78	82	86	92	98	104	110	116	122	128
4	inches	32 1/2	34	35 1/2	37	38 3/4	40 1/4	41 3/4	43 1/2	45 1/2	48	50 1/2	52 3/4	55 1/4	57 1/2	60
	cm	82	86	90	94	98	102	106	110	116	122	128	134	140	146	152
5	inches	15 3/4	16	16 1/4	16 1/2	16 1/2	16 3/4	17	17 1/4	17 1/4	17 1/2	17 3/4	18	18 1/4	18 1/2	18 1/2
	cm	40	40.5	41	41.5	42	42.5	43	43.5	44	44.5	45	45.5	46	46.5	47
6	inches	23 1/4	23 1/4	23 1/4	23 3/4	23 3/4	24	24	24	24	24 1/2	24 1/2	24 1/2	24 3/4	24 3/4	24 3/4
	cm	59	59	59	60	60	61	61	61	61	62	62	62	63	63	63
7	inches	13	13 1/2	14 1/4	14 1/2	14 3/4	15	15 1/2	15 3/4	16 1/4	16 1/2	17	17 1/4	17 3/4	18 1/4	18 1/2
	cm	33	34	35	36	37	38	39	40	41	42	43	44	45	46	47
8	inches	39 3/4	40 1/4	40 1/4	40 3/4	41	41	41 1/2	41 1/2	41 1/2	41 3/4	41 3/4	41 3/4	42 1/4	42 1/2	42 1/2
	cm	101	102	102	103	104	104	105	105	105	106	106	106	107	108	108
9	inches	16 1/2	17	17 1/4	17 3/4	18 1/4	18 1/2	19	19 1/4	19 3/4	20 1/4	20 1/2	21	21 1/4	21 3/4	22 1/4
	cm	42	43	44	45	46	47	48	49	50	51	52	53	54	55	56
10	inches	9 1/2	9 7/8	10 1/4	10 3/4	11 1/8	11 1/2	11 7/8	12 1/4	12 3/4	13	13 1/2	14 1/4	14 1/2	14 3/4	15
	cm	24	25	26	27	28	29	30	31	32	33	34	35	36	37	38
11	inches	9 7/8	10 1/4	10 3/4	11 1/8	11 1/2	11 7/8	12 1/4	12 3/4	13 1/2	14 1/2	15	15 3/4	16 1/2	17 1/4	18 1/4
	cm	25	26	27	28	29	30	31	32	34	36	38	40	42	44	46



englisch

1. Height
2. Bust
3. Waist
4. Hip
5. Back length
6. Sleeve length
7. Neck width
8. Side leg length
9. Front waist length
10. Bust point
11. Upper arm circumf.

For dresses, blouses, coats and jackets select size according to bust measurement, for trousers and skirts according to hip measurement!

All burda patterns are prepared with ease allowance appropriate for style in question.

français

1. Stature
2. Tour de poitrine
3. Tour de taille
4. Tour des hanches
5. Long. du dos
6. Longueur de manche
7. Tour de cou
8. Long. côté pantalon
9. Long. taille devant
10. Profondeur de poitrine
11. Tour du bras

Robes, corsages, manteaux et vestes seront choisis d'après votre tour de poitrine les pantalons et les jupes d'après votre tour de hanches!

Tous les patrons sont établis avec l'aisance nécessaire selon le genre du modèle.

español

1. Estatura
2. Contorno busto
3. Contorno cintura
4. Contorno cadera
5. Largo espalda
6. Largo manga
7. Contorno cuello
8. Largo lateral del pantalón
9. Largo talle delantero
10. Altura de pecho
11. Cont. de brazo

La talla para los vestidos, blusas, abrigos y chaquetas, se determina de acuerdo con el contorno del busto. Los pantalones y las faldas, de acuerdo con el contorno de las caderas.

En el patrón-Burda se incluyen los márgenes para la holgura necesaria.

9a

Burda  
STYLE  
www.burdastyle.com

1

FRONT  
DEVANT  
DELANTERO



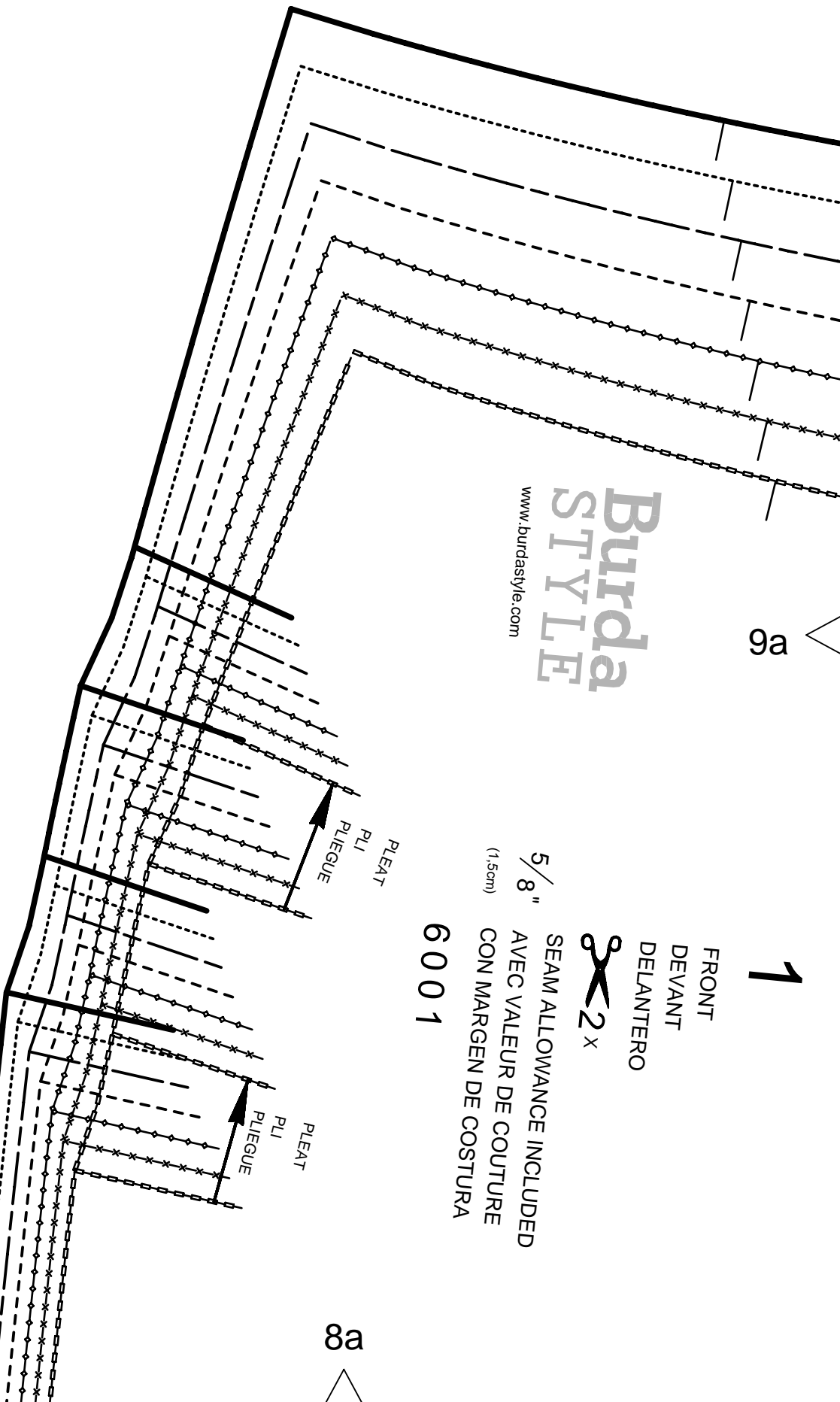
5/8" (1.5cm)

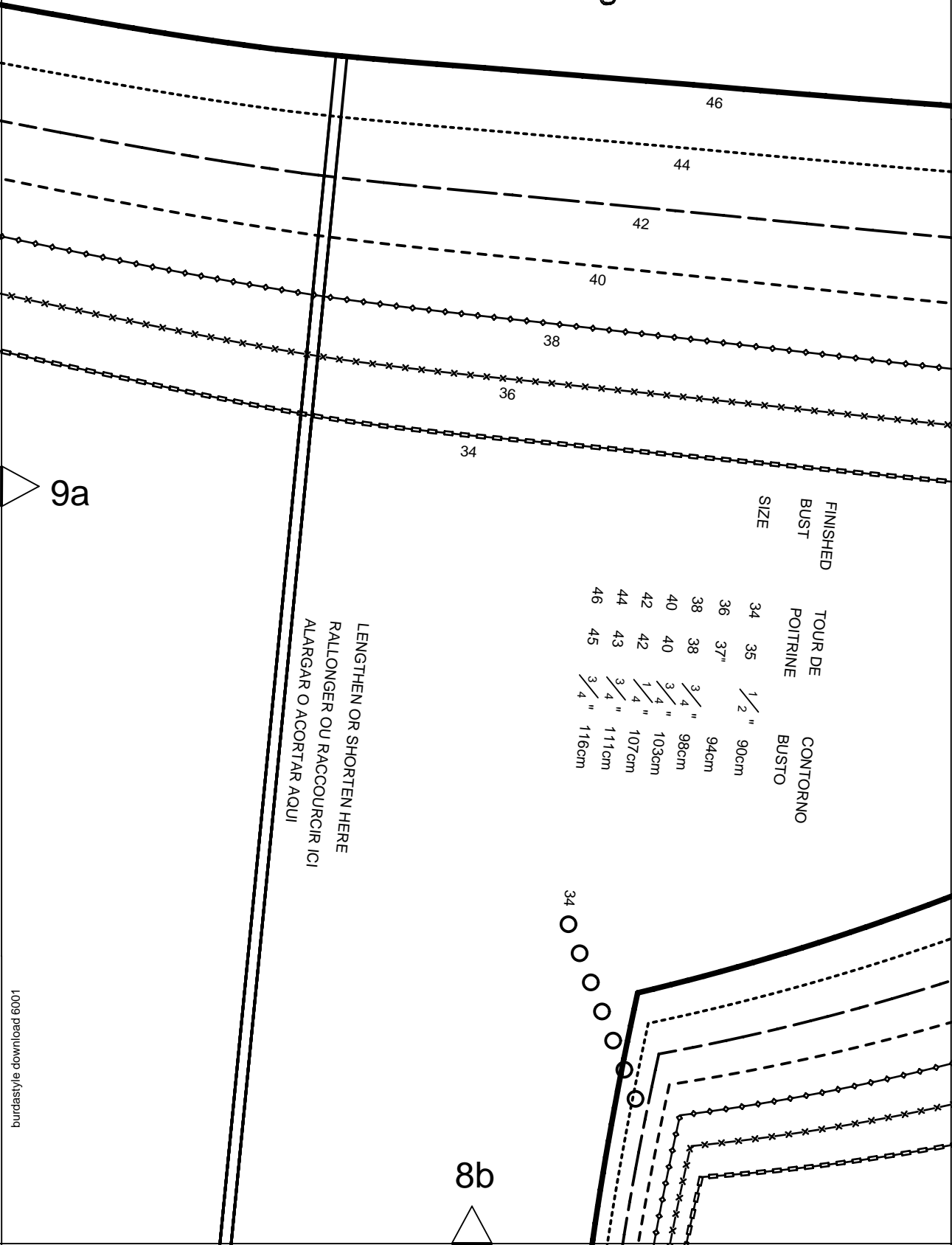
SEAM ALLOWANCE INCLUDED  
AVEC VALEUR DE COUTURE  
CON MARGEN DE COSTURA  
6001

PLEAT  
PLI  
PLIEGUE

PLEAT  
PLI  
PLIEGUE

8a





46

44

42

40

38

36

34

9a

FINISHED  
BUST  
SIZE

TOUR DE  
POITRINE

CONTORNO  
BUSTO

34	35	1/2"	90cm
36	37"		94cm
38	38	3/4"	98cm
40	40	3/4"	103cm
42	42	1 1/4"	107cm
44	43	3/4"	111cm
46	45	3/4"	116cm

LENGTHEN OR SHORTEN HERE  
RALLONGER OU RACCOURCIR ICI  
ALARGAR O ACORTAR AQUI

34

8b

9b

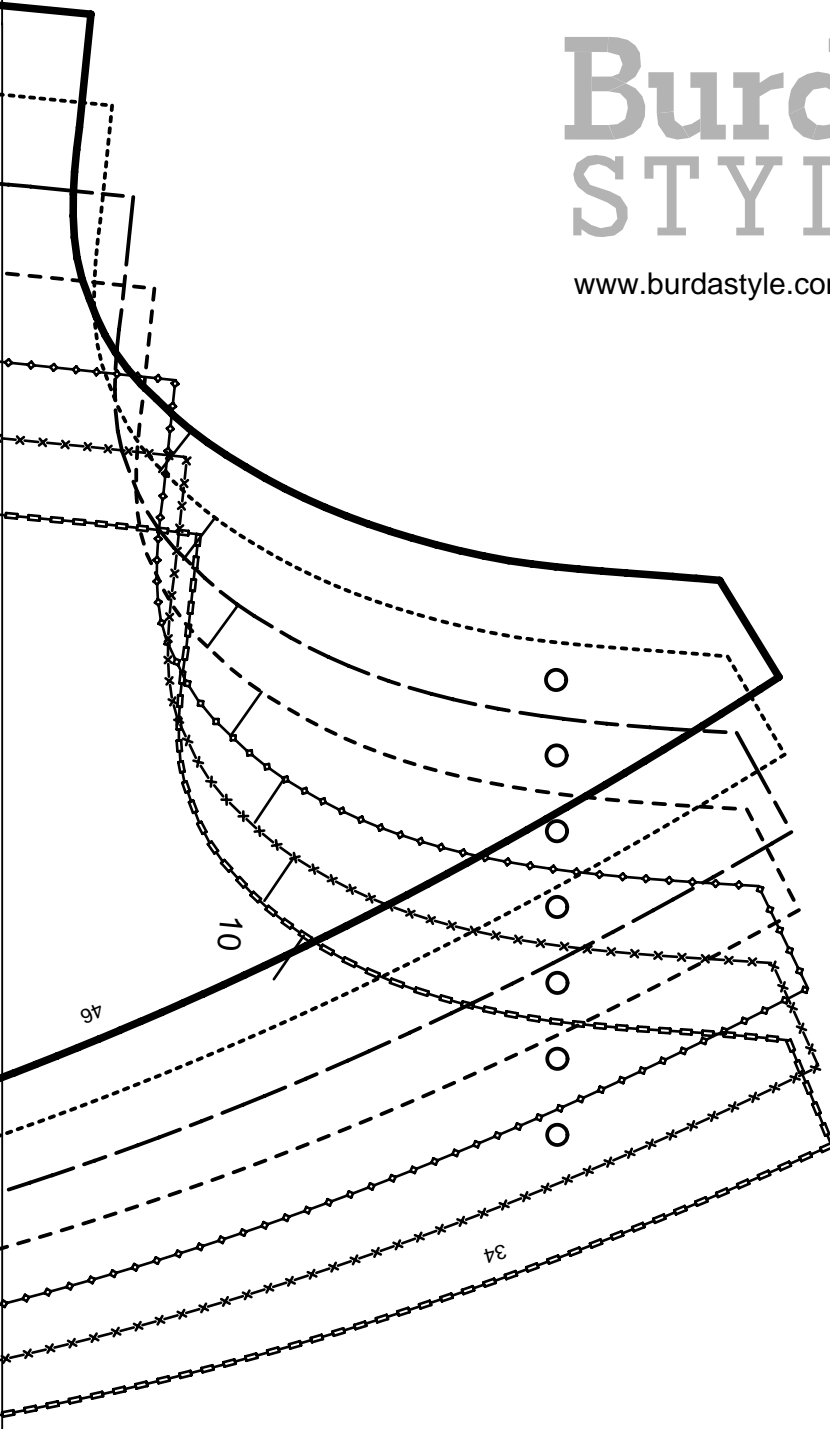
9

RUFFLE  
VOLANT  
VOLANTE

 2x 6001

Burda  
STYLE

[www.burdastyle.com](http://www.burdastyle.com)

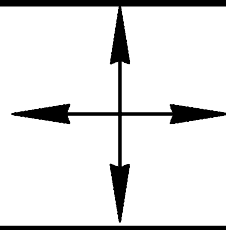


9c

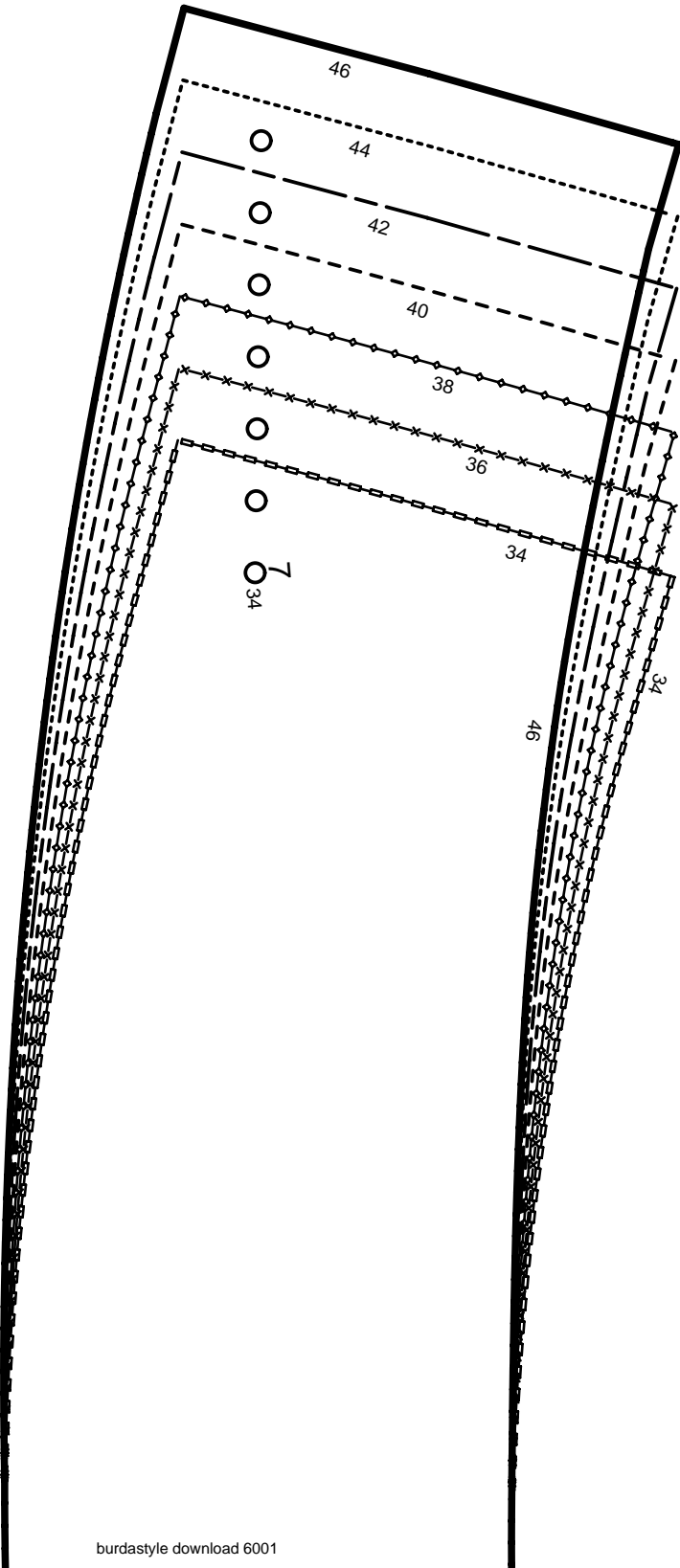
8c



GATHER  
FRONCER  
FRUNCIR



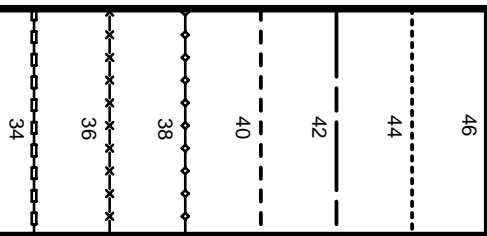
9d



9c

8d





KEY TO SYMBOLS  
 LEGENDE  
 INTERPRETACION DE LOS SIMBOLOS



SYMBOL FOR STITCHING LINES  
 REMARQUE CONCERNANT LES LIGNES DE PIQUES  
 INDICACION PARA LINEAS DE PESPUENTE



SEAM ATTACHMENT POINT  
 POINT DE RACCORD DE LA COUTURE  
 PUNTO DE AJUSTE DE LA COSTURA



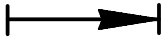
SEAM NUMBERS ARE MATCHING SYMBOLS AND DENOTE  
 WHERE TWO PIECES SHOULD BE SEWN TOGETHER.  
 LES CHIFFRES-REPERES INDIQUENT OU ASSEMBLER LES PIECES.  
 LES CHIFFRES IDENTIQUES COINCIDENT.  
 LOS NUMEROS DE COSTURA INDICAN DONDE LAS PIEZAS.  
 LOS MISMOS NUMEROS CONCIDEN.



GATHER BETWEEN THE STARS.  
 FRONCER ENTRE LES ASTERISQUES.  
 EMBEBER ENTRE LAS ESTRELLAS.



EASE IN BETWEEN THE DOTS.  
 SOUTENIR ENTRE LES POINTS.  
 EMBEBER ENTRE LOS PUNTOS.



POSITION PLEATS IN DIRECTION OF ARROW.  
 POSER LES PLIS DANS LE SENS DES FLECHES.  
 PONER LOS PLIEQUES SEGUN LA FLECHA.



SYMBOL INDICATING THE BEGINNING OR END OF VENT.  
 REPERE DE DEBUT OU DE FIN DE FENTE.  
 MARCA PARA EL PRINCIPIO O FINAL DE LA ABERTURA.



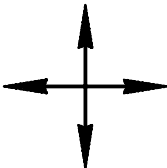
SLASH  
 FENTE  
 CORTE



BUTTONHOLE  
 BOUTONNIERE  
 OIAL



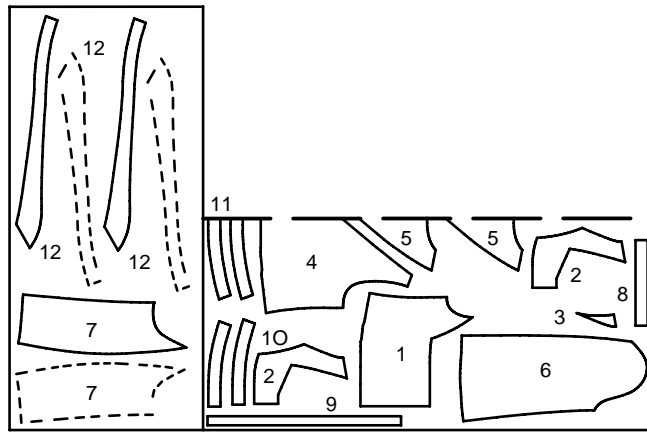
BUTTON OR SNAP  
 BOUTON OU BOUTON-PRESSION  
 BOTON O BROCHE DE PRESION



SEE CUTTING DIAGRAMS FOR STRAIGHT GRAIN OF FABRIC  
 SENS DU DROIT-FIL VOIR LES PLANS DE COUPE  
 DIRECCION DEL HILO, VEANSE PLANOS DE CORTE

PATTERN LAYOUT  
PLAN DE COUPE  
PLANO DE CORTE

55" 140 CM



34-46