



2a

1a



CUFF FOLD
REVERS PLIURE
VUELTA DOBLEZ

HEM-FOLDLINE

PLIURE DE L'OURLET
DOBLADILLO-LINEA DE DOBLEZ

HEM ALLOWANCE
VALEUR D'OURLET
MARGEN DE DOBLADILLO

3/4" (2cm)



4

34

36

38

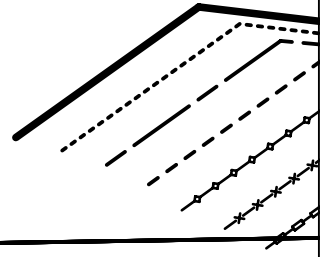
40

42

44

46

2b



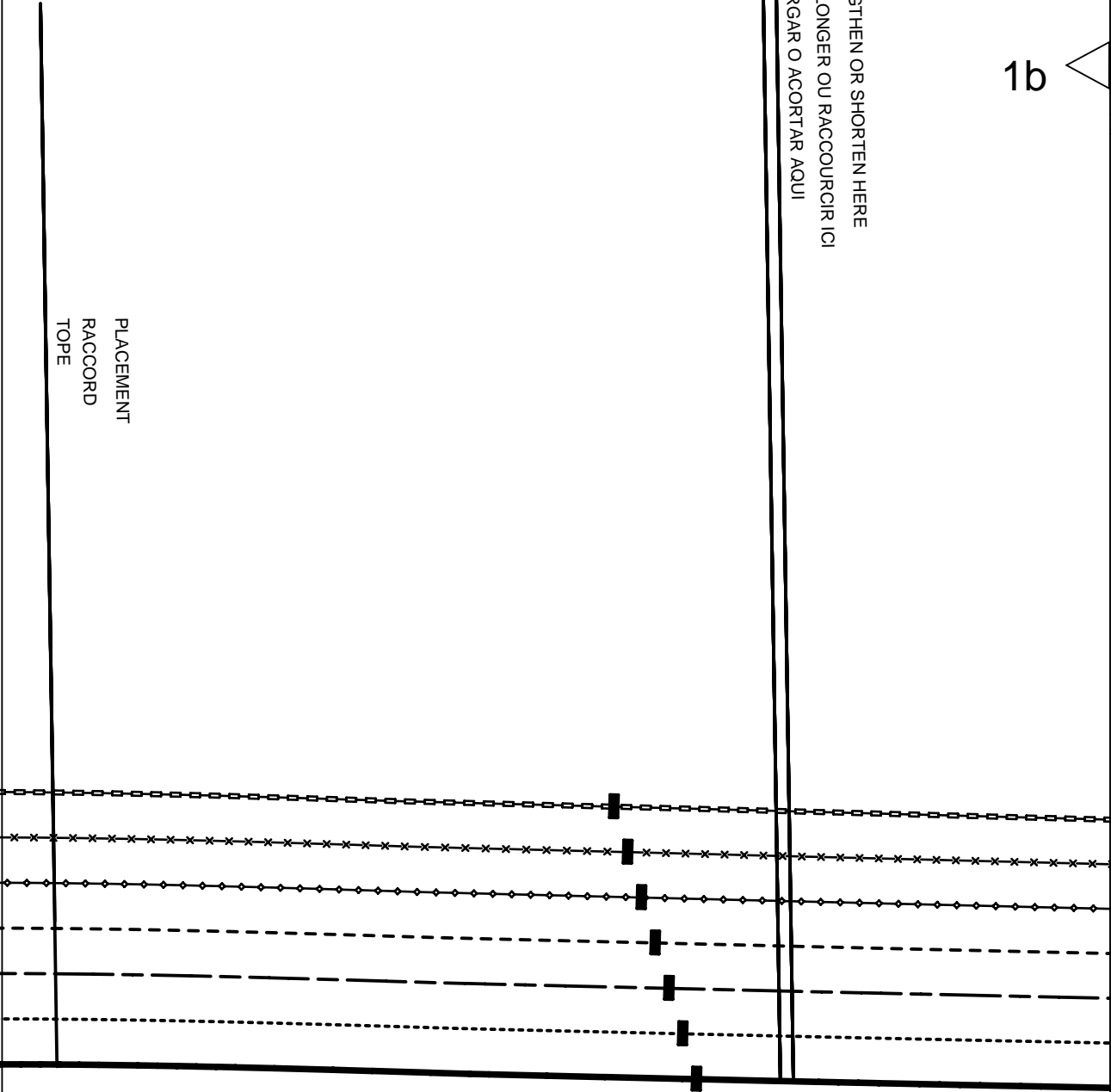
STRAIGHT GRAIN
DROIT FIL
SENTIDO HILO

1a

LENGTHEN OR SHORTEN HERE
RALLONGER OU RACCOURCIR ICI
ALARGAR O ACORTAR AQUI

1b

PLACEMENT
RACCORD
TOPE



2c

LEFT POCKET PLACEMENT
LIGNE DE POSITION DE POCHE A GAUCHE
LINEA DE TOPE BOLSILLO, IZQUIERDA

LEFT
A GAUCHE
IZQUIERDA

1b

FLAP ATTACHMENT
LIGNE DE MONTAGE DU RABAT
LINEA DE APLICACION CARTERA

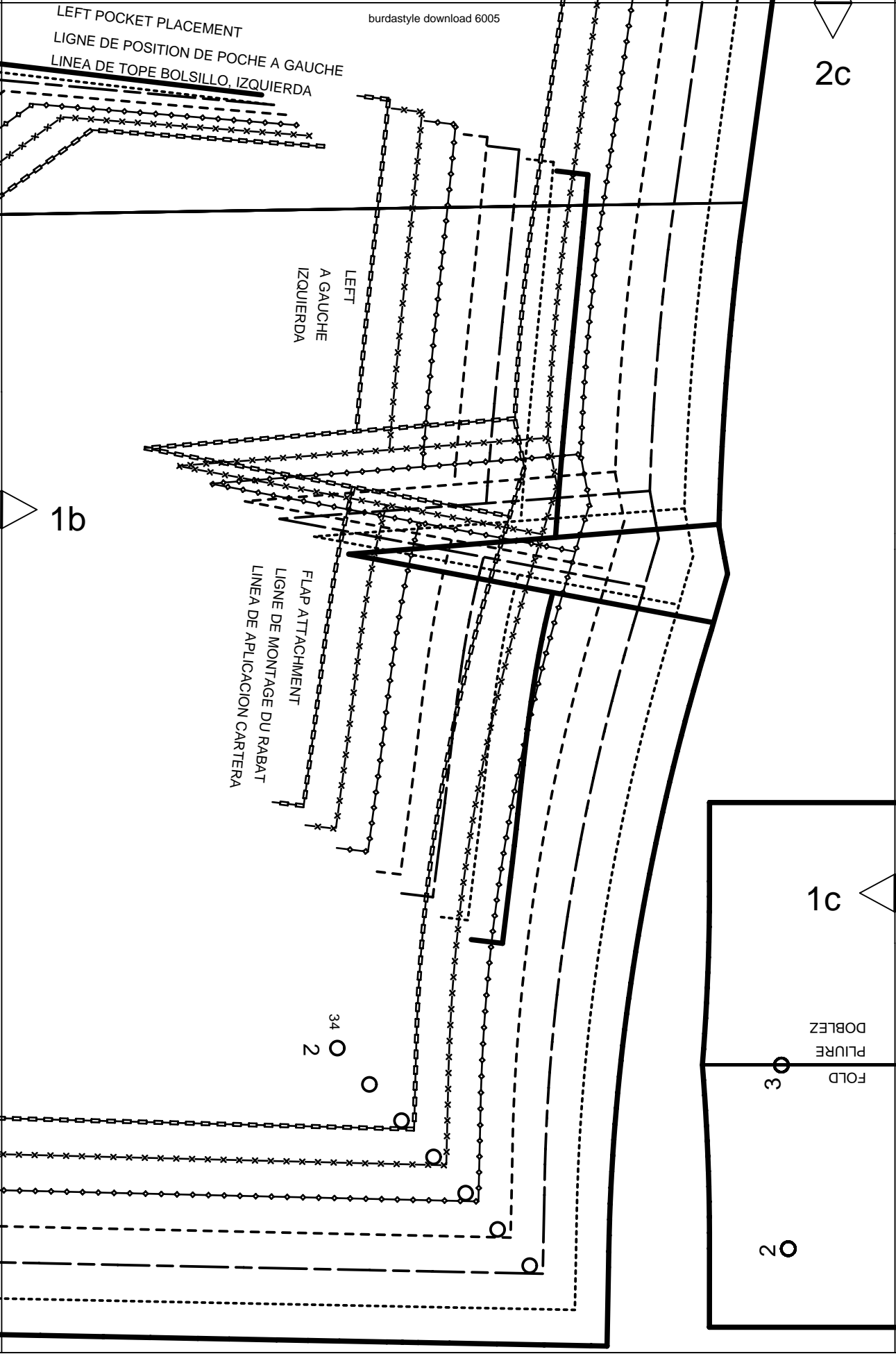
34
2

1c

FOLD
PLURE
DOBLEZ

3

2



Burda
STYLE

www.burdastyle.com

STRAIGHT GRAIN

DROIT FIL

SENTIDO HILLO

1c

SEAM ALLOWANCE INCLUDED
AVEC VALEUR DE COUTURE
CON MARGEN DE COSTURA

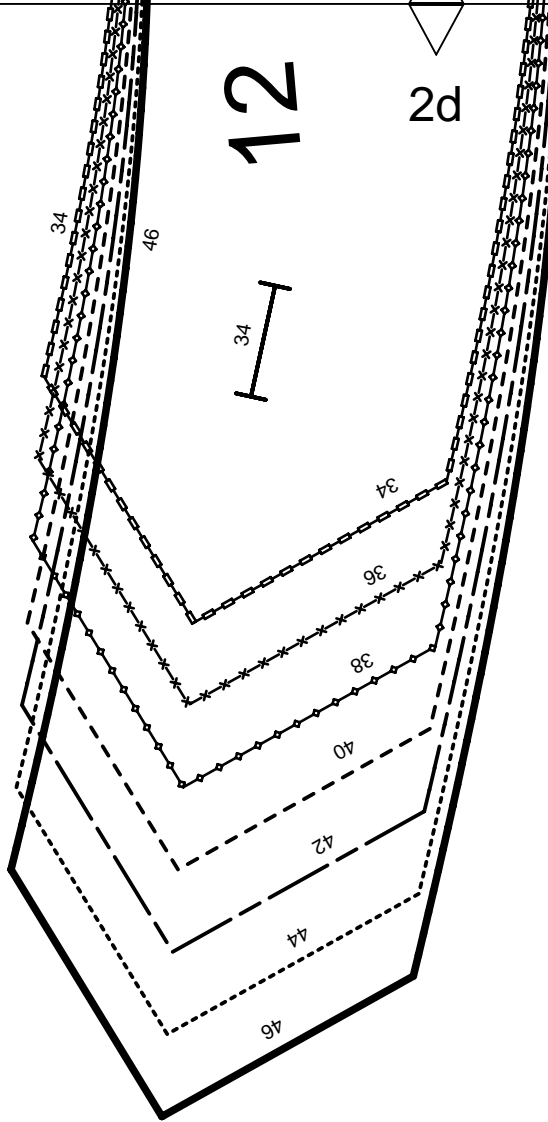
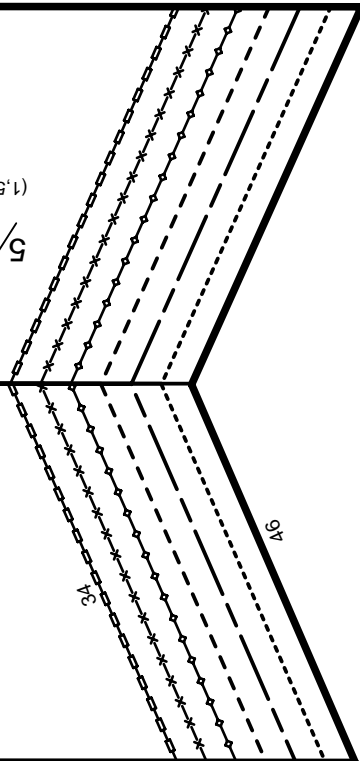
5/8" (1,5cm)



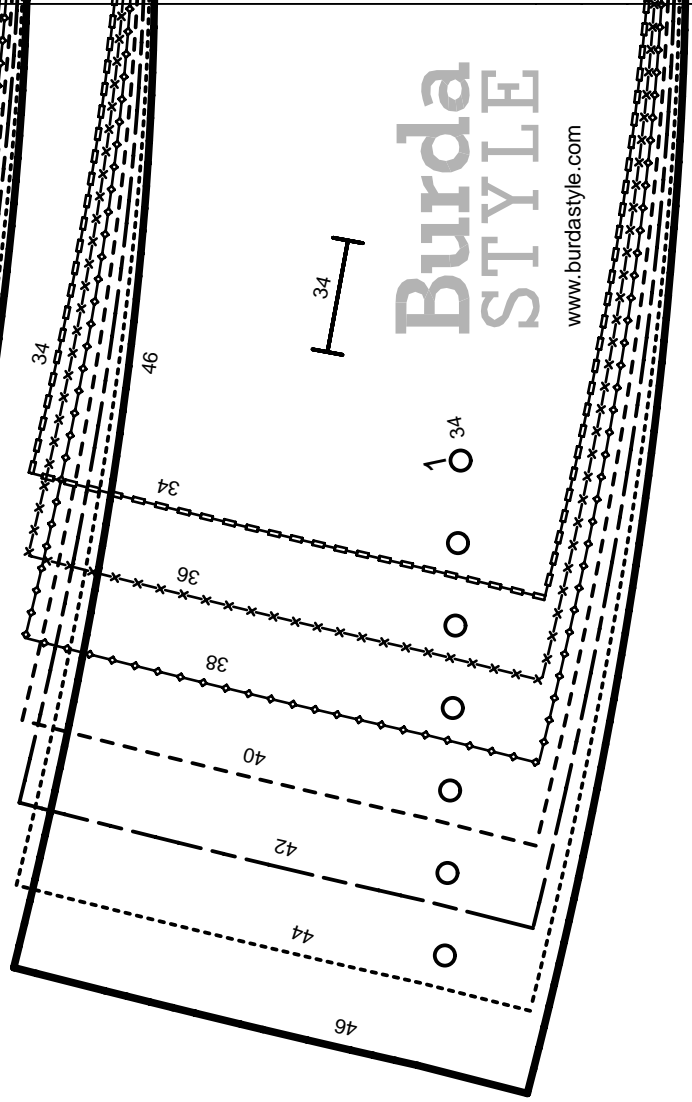
6005

UNDERLAP
SOUS-PATTE
PATA INFERIOR

6



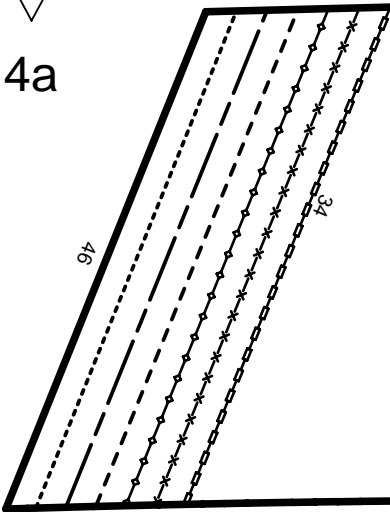
2d



Burda
STYLE

www.burdastyle.com

4a



5 FRONT FACING
 PAREMENTURE DEVANT
 VISTA DELANTERA

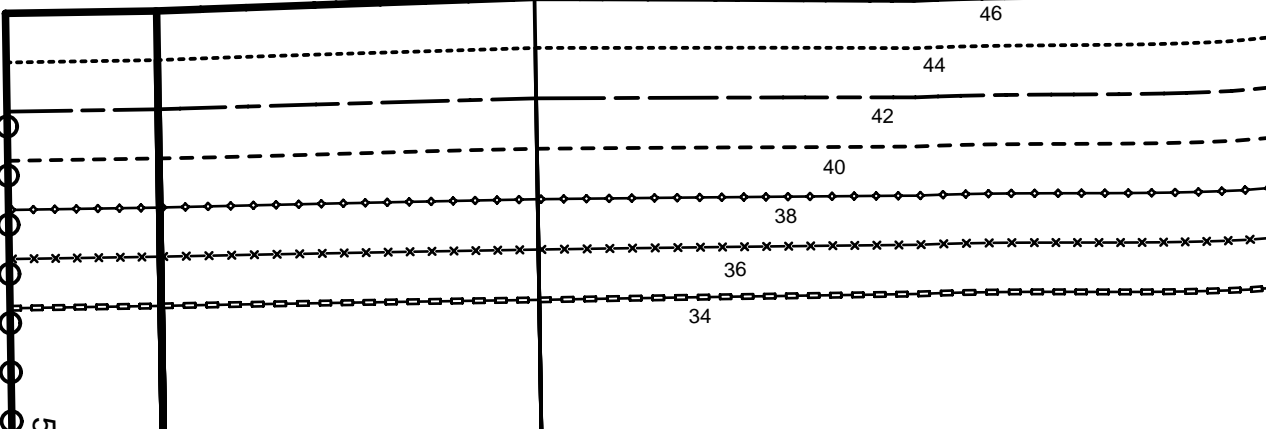


$\frac{5}{8}$ "
 (1,5cm)

SEAM ALLOWANCE INCLUDED
 AVEC VALEUR DE COUTURE
 CON MARGEN DE COSTURA

6005

STRAIGHT GRAIN
 DROIT FIL
 SENTIDO HILO



3a

2

PANTS, BACK
 DOS PANTALON/CULOTTE
 PANTALON POST.



$\frac{5}{8}$ "
 (1,5cm)

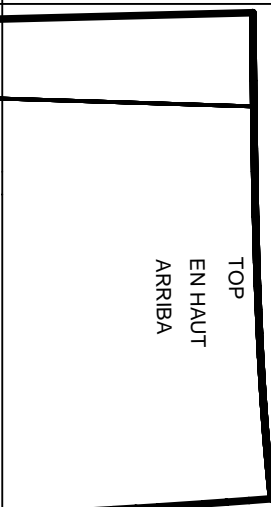
SEAM ALLOWANCE INCLUDED
 AVEC VALEUR DE COUTURE
 CON MARGEN DE COSTURA

6005

Burda
 STYLE

www.burdastyle.com

2a



4b

Burda
STYLE

www.burdastyle.com

8 POCKET POUCH
FOND DE POCHE
BOLSILLO INTERIOR



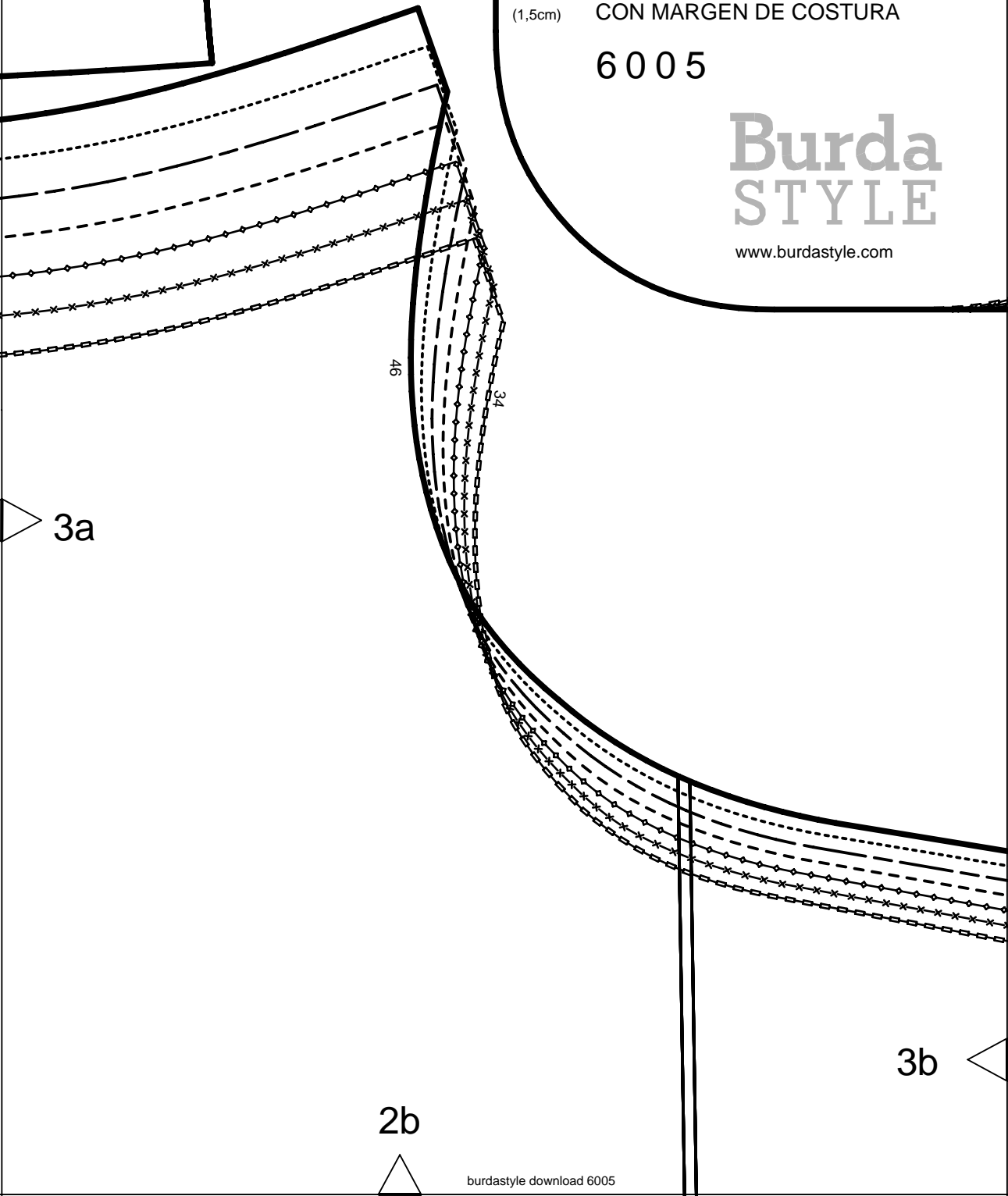
5/8"
(1,5cm)

SEAM ALLOWANCE INCLUDED
AVEC VALEUR DE COUTURE
CON MARGEN DE COSTURA

6005

Burda
STYLE

www.burdastyle.com

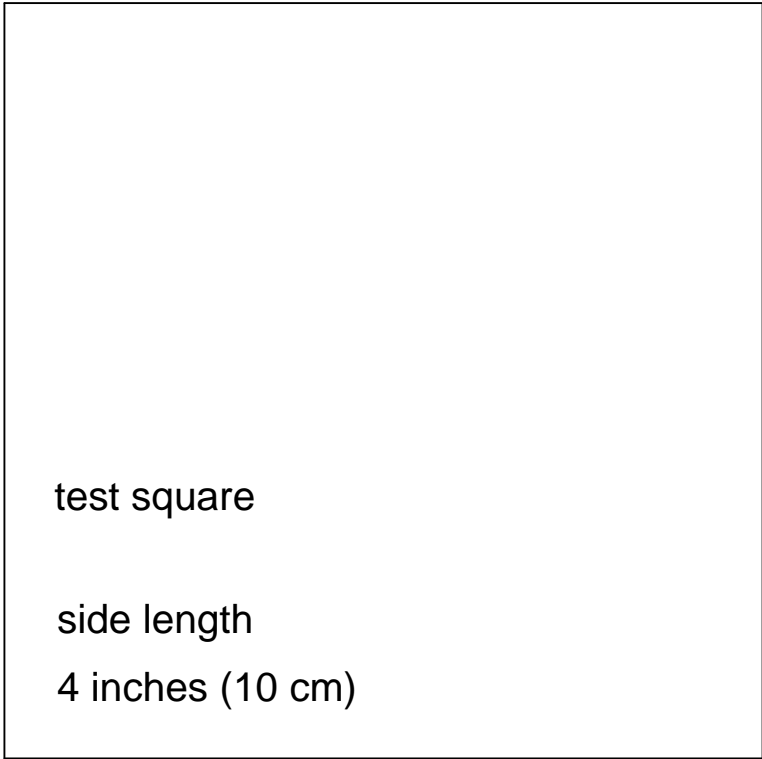
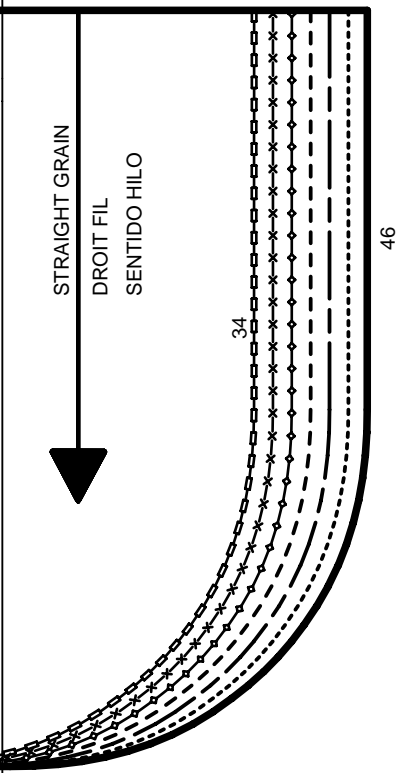


3a

3b

2b

4c



11

FLAP
RABAT
CARTERA



5/8"
(1,5cm)

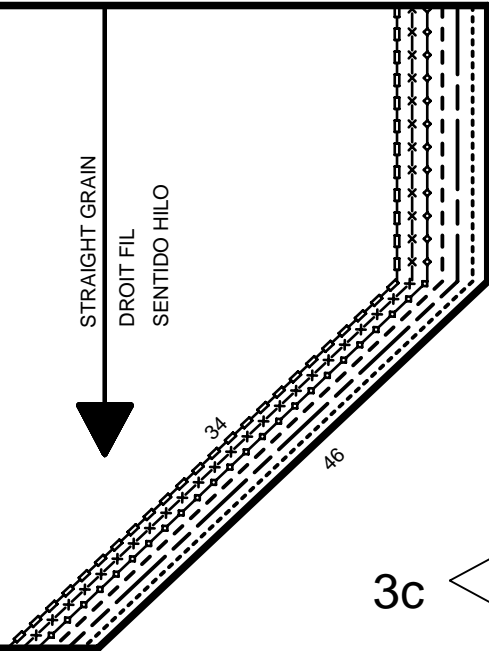
SEAM ALLOWANCE INCLUDED
AVEC VALEUR DE COUTURE
CON MARGEN DE COSTURA

6005

Burda
STYLE

www.burdastyle.com

STRAIGHT GRAIN
DROIT FIL
SENTIDO HILO



3c

3b

CENTER BACK SEAM
COUTURE MILIEU DOS
CENTRO POST. COSTURA

2c

3c

ON THE FOLD
DANS LA PLIURE DU TISSU
CON CANTO DOBLADO



SEAM ALLOWANCE INCLUDED
AVEC VALEUR DE COUTURE
CON MARGEN DE COSTURA

5/8" (1,5cm)

2

6005

TOP
EN HAUT
ARRIBA

STRAIGHT GRAIN
DROIT FIL
SENTIDO HILO

CENTER FRONT FOLD
MILIEU DEVANT
MEDIO DELANTERO, DOBLEZ

CENTER FRONT FOLD, STRAIGHT GRAIN
MILIEU DEVANT PLIURE, DROIT FIL
MEDIO DELANTERO DOBLEZ SENT. HILO

FRONT WAISTBAND
CEINTURE DEVANT
PRETINA DELANTERA

3

ON THE FOLD
DANS LA PLIURE DU TISSU
CON CANTO DOBLADO



SEAM ALLOWANCE INCLUDED
AVEC VALEUR DE COUTURE
CON MARGEN DE COSTURA

5/8" (1,5cm)

6005

PLACEMENT
RACCORD
TOPE



Burda
STYLE

www.burdastyle.com

4d

6005

SEAM ALLOWANCE INCLUDED
AVEC VALEUR DE COUTURE
CON MARGEN DE COSTURA

(1,5cm)

5/8"



POCKET POUCH
FOND DE POCHE
BOLSILLO INTERIOR

7

34

46

34

Burda
STYLE

www.burdastyle.com

6a

5a

51

34

36

38

40

42

44

46



10

POCKET
POCHE
BOLSILLO



5/8"
(1,5cm)

SEAM ALLOWANCE INCLUDED
AVEC VALEUR DE COUTURE
CON MARGEN DE COSTURA

6005

STRAIGHT GRAIN
DROIT FIL
SENTIDO HILO



34

46

4a

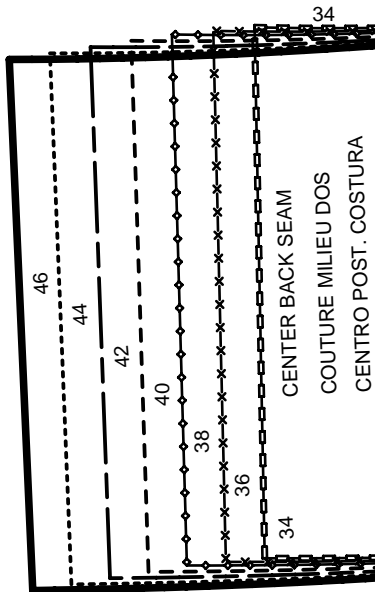
Burda STYLE

www.burdastyle.com

6b

5a

5b



4

BACK WAISTBAND
CEINTURE DOS
PRETINA POST.

✂ 4 x

5/8" (1,5cm)

SEAM ALLOWANCE INCLUDED
AVEC VALEUR DE COUTURE
CON MARGEN DE COSTURA

6005

CENTER BACK FOLD
PLIURE DU TISSU MILIEU DOS
CENTRO POST. CANTO DE DOBLEZ
STRAIGHT GRAIN
DROIT FIL
SENTIDO HILO

TOP
EN HAUT
ARRIBA

13

✂ 2 x

ON THE FOLD
DANS LA PLIURE DU TISSU
CON CANTO DOBLADO

5/8" (1,5cm)

SEAM ALLOWANCE INCLUDED
AVEC VALEUR DE COUTURE
CON MARGEN DE COSTURA

6005

4b

CENTER FRONT SEAM
COUTURE MILIEU DEVANT
CENTRO ANTERIOR COSTURA

6c

5c

5b

STRAIGHT GRAIN
DROIT FIL
SENTIDO HILO

PLACEMENT
RACCORD
TOPE

PLACEMENT
RACCORD
TOPE

PLACEMENT
RACCORD
TOPE

3
34

Burda
STYLE

www.burdastyle.com

Burda
STYLE

www.burdastyle.com

46

34

34

PLACEMENT
RACCORD
TOPE

34

38

40

42

44

46

4c

6d

5c

KEY TO SYMBOLS

LEGENDE

INTERPRETACION DE LOS SIMBOLOS



SYMBOL FOR STITCHING LINES
REMARQUE CONCERNANT LES LIGNES DE PIQUES
INDICACION PARA LINEAS DE PESPUNTE



SEAM ATTACHMENT POINT
POINT DE RACCORD DE LA COUTURE
PUNTO DE AJUSTE DE LA COSTURA



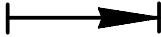
SEAM NUMBERS ARE MATCHING SYMBOLS AND DENOTE
WHERE TWO PIECES SHOULD BE SEWN TOGETHER.
LES CHIFFRES-REPERES INDIQUENT OU ASSEMBLER LES PIECES.
LES CHIFFRES IDENTIQUES COINCIDENT.
LOS NUMEROS DE COSTURA INDICAN DONDE LAS PIEZAS.
LOS MISMOS NUMEROS CONCIDEN.



GATHER BETWEEN THE STARS.
FRONCER ENTRE LES ASTERISQUES.
EMBEBER ENTRE LAS ESTRELLAS.



EASE IN BETWEEN THE DOTS.
SOUTENIR ENTRE LES POINTS.
EMBEBER ENTRE LOS PUNTOS.



POSITION PLEATS IN DIRECTION OF ARROW.
POSER LES PLIS DANS LE SENS DES FLECHES.
PONER LOS PLIEQUES SEGUN LA FLECHA.



SYMBOL INDICATING THE BEGINNING OR END OF VENT.
REPERE DE DEBUT OU DE FIN DE FENTE.
MARCA PARA EL PRINCIPIO O FINAL DE LA ABERTURA.



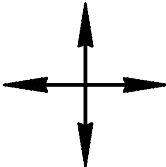
SLASH
FENTE
CORTE



BUTTONHOLE
BOUTONNIERE
OIAL

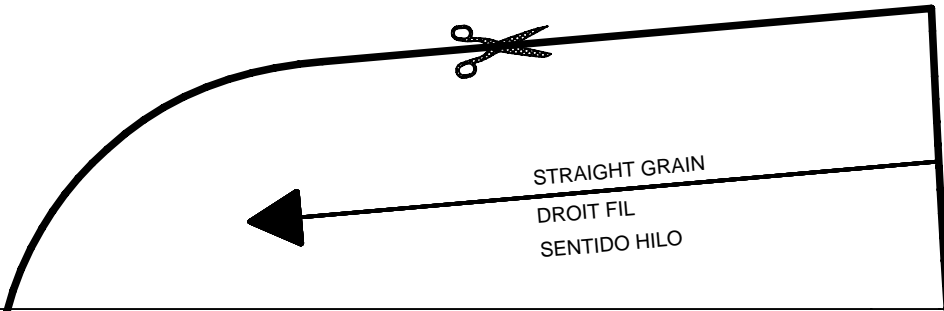


BUTTON OR SNAP
BOUTON OU BOUTON-PRESSION
BOTON O BROCHE DE PRESION



SEE CUTTING DIAGRAMS FOR STRAIGHT GRAIN OF FABRIC
SENS DU DROIT-FIL VOIR LES PLANS DE COUPE
DIRECCION DEL HILO, VEANSE PLANOS DE CORTE

4d

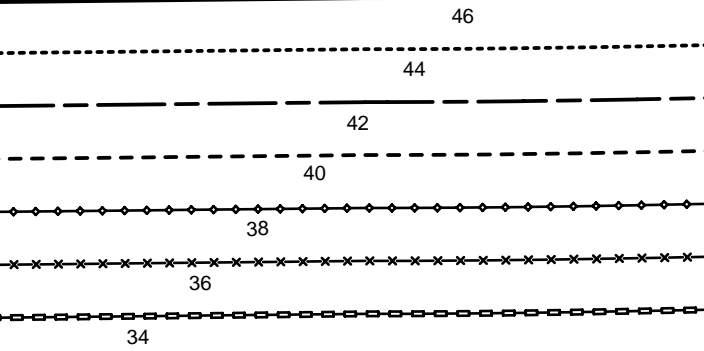


1

PANTS, FRONT
DEVANT PANTALON/CULOTTE
PANTALON ANTERIOR



SEAM ALLOWANCE INCLUDED
AVEC VALEUR DE COUTURE
CON MARGEN DE COSTURA
5/8" (1.5cm)
6005



CUFF FOLD

REVERS PLIURE
VUELTA DOBLEZ

Burda
STYLE

www.burdistyle.com

HEM-FOLDLINE

PLIURE DE L'OURLET
DOBLADILLO-LINEA DE DOBLEZ

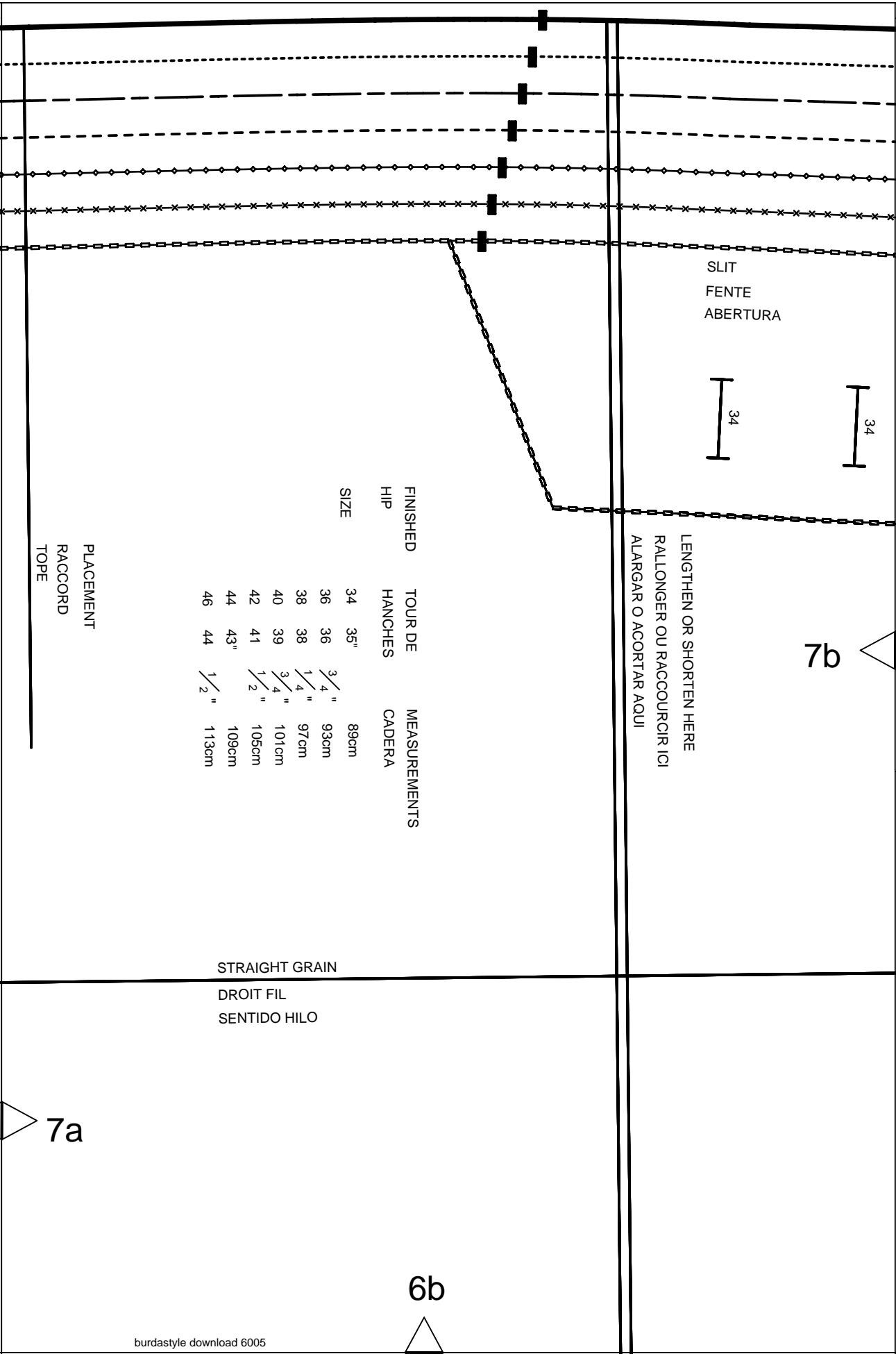
4



7a

6a

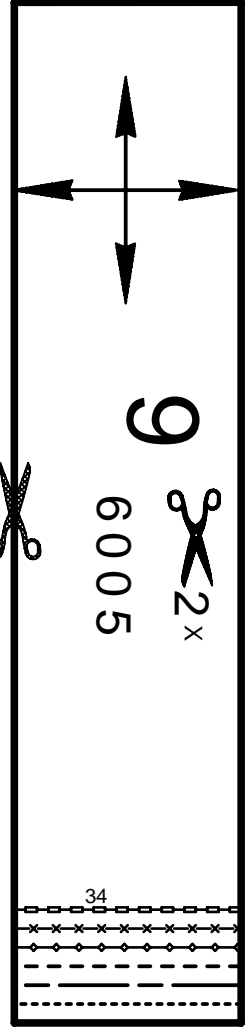
HEM ALLOWANCE
VALEUR D'OURLET
MARGEN DE DOBLADILLO
3/4" (2cm)



7c

Burda
STYLE

www.burdastyle.com



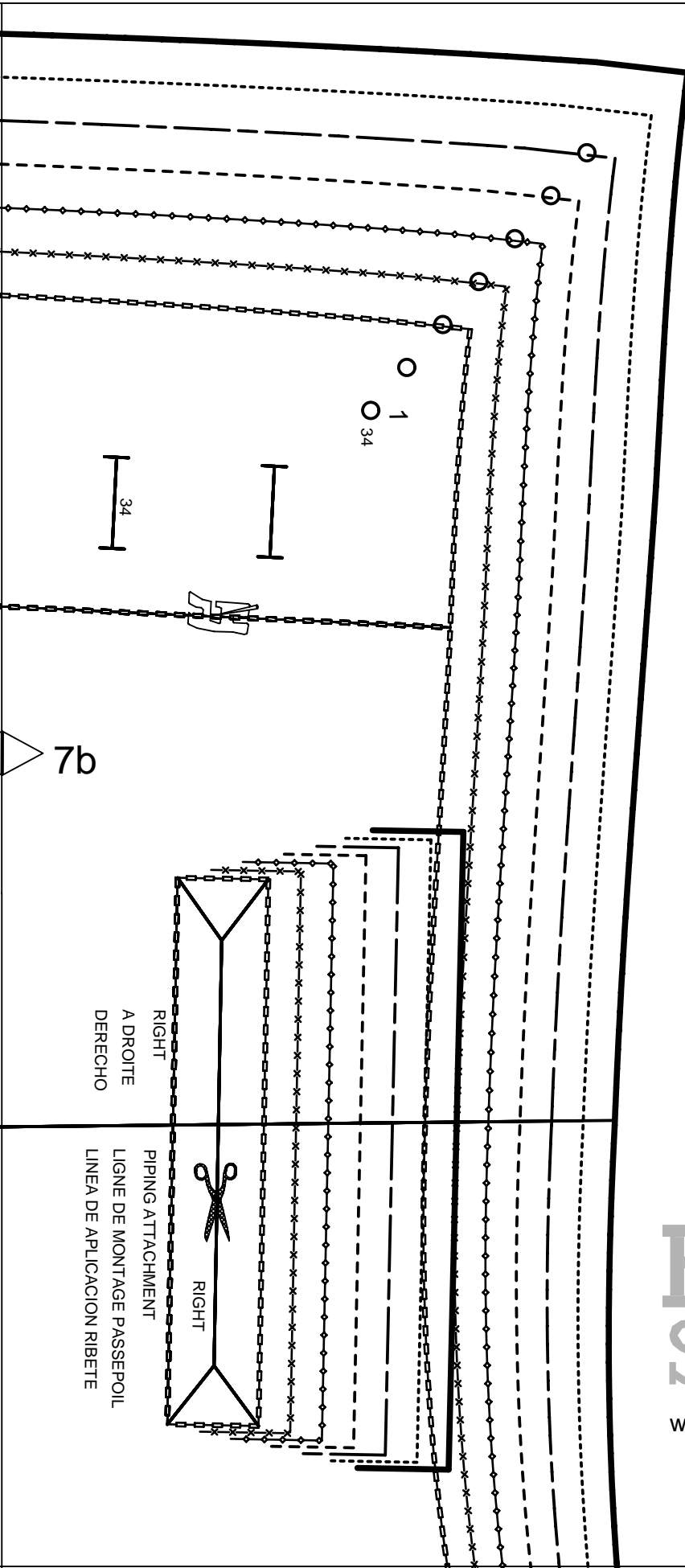
46

Burda
STYLE

www.burdastyle.com

6c

burdastyle download 6005



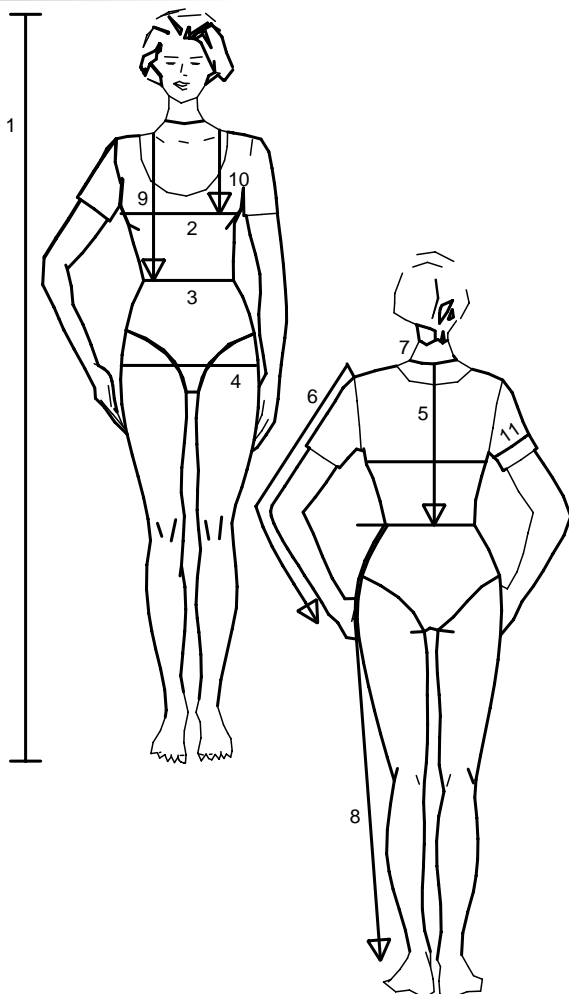
7b

RIGHT
A DROITE
DERECHO

PIPING ATTACHMENT
LIGNE DE MONTAGE PASSEPOIL
LINEA DE APLICACION RIBETE

RIGHT

Size Taille Talla		32	34	36	38	40	42	44	46	48	50	52	54	56	58	60
1	inches	66 1/4	66 1/4	66 1/4	66 1/4	66 1/4	66 1/4	66 1/4	66 1/4	66 1/4	66 1/4	66 1/4	66 1/4	66 1/4	66 1/4	66 1/4
	cm	168	168	168	168	168	168	168	168	168	168	168	168	168	168	168
2	inches	30	31 1/2	33	34 3/4	36 1/4	37 3/4	39 1/2	41	43 1/2	45 1/2	48	50 1/2	52 3/4	55 1/4	57 1/2
	cm	76	80	84	88	92	96	100	104	110	116	122	128	134	140	146
3	inches	23	24 1/2	26	27 3/4	29 1/4	30 3/4	32 1/2	34	36 1/4	38 3/4	41	43 1/2	45 1/2	48	50 1/2
	cm	58	62	66	70	74	78	82	86	92	98	104	110	116	122	128
4	inches	32 1/2	34	35 1/2	37	38 3/4	40 1/4	41 3/4	43 1/2	45 1/2	48	50 1/2	52 3/4	55 1/4	57 1/2	60
	cm	82	86	90	94	98	102	106	110	116	122	128	134	140	146	152
5	inches	35 3/4	36	36 1/4	36 1/2	36 1/2	36 3/4	37	37 1/4	37 1/4	37 1/2	37 3/4	38	38 1/4	38 1/2	38 1/2
	cm	40	40,5	41	41,5	42	42,5	43	43,5	44	44,5	45	45,5	46	46,5	47
6	inches	23 1/4	23 1/4	23 1/4	23 3/4	23 3/4	24	24	24	24	24 1/2	24 1/2	24 1/2	24 3/4	24 3/4	24 3/4
	cm	59	59	59	60	60	61	61	61	61	62	62	62	63	63	63
7	inches	13	13 1/2	14 1/4	14 1/2	14 3/4	15	15 1/2	15 3/4	16 1/4	16 1/2	17	17 1/4	17 3/4	18 1/4	18 1/2
	cm	33	34	35	36	37	38	39	40	41	42	43	44	45	46	47
8	inches	39 3/4	40 1/4	40 1/4	40 3/4	41	41	41 1/2	41 1/2	41 1/2	41 3/4	41 3/4	41 3/4	42 1/4	42 1/2	42 1/2
	cm	101	102	102	103	104	104	105	105	105	106	106	106	107	108	108
9	inches	16 1/2	17	17 1/4	17 3/4	18 1/4	18 1/2	19	19 1/4	19 3/4	20 1/4	20 1/2	21	21 1/4	21 3/4	22 1/4
	cm	42	43	44	45	46	47	48	49	50	51	52	53	54	55	56
10	inches	9 1/2	9 7/8	10 1/4	10 3/4	11 1/8	11 1/2	11 7/8	12 1/4	12 3/4	13	13 1/2	14 1/4	14 1/2	14 3/4	15
	cm	24	25	26	27	28	29	30	31	32	33	34	35	36	37	38
11	inches	9 7/8	10 1/4	10 3/4	11 1/8	11 1/2	11 7/8	12 1/4	12 3/4	13 1/2	14 1/2	15	15 3/4	16 1/2	17 1/4	18 1/4
	cm	25	26	27	28	29	30	31	32	34	36	38	40	42	44	46



englisch

1. Height
2. Bust
3. Waist
4. Hip
5. Back length
6. Sleeve length
7. Neck width
8. Side leg length
9. Front waist length
10. Bust point
11. Upper arm circumf.

For dresses, blouses, coats and jackets select size according to bust measurement, for trousers and skirts according to hip measurement!

All burda patterns are prepared with ease allowance appropriate for style in question.

français

1. Stature
2. Tour de poitrine
3. Tour de taille
4. Tour des hanches
5. Long. du dos
6. Longueur de manche
7. Tour de cou
8. Long. côté pantalon
9. Long. taille devant
10. Profondeur de poitrine
11. Tour du bras

Robes, corsages, manteaux et vestes seront choisis d'après votre tour de poitrine les pantalons et les jupes d'après votre tour de hanches!

Tous les patrons sont établis avec l'aisance nécessaire selon le genre du modèle.

español

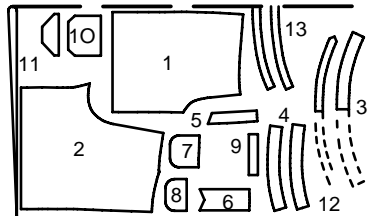
1. Estatura
2. Contorno busto
3. Contorno cintura
4. Contorno cadera
5. Largo espalda
6. Largo manga
7. Contorno cuello
8. Largo lateral del pantalón
9. Largo talle delantero
10. Altura de pecho
11. Cont. de brazo

La talla para los vestidos, blusas, abrigos y chaquetas, se determina de acuerdo con el contorno del busto. Los pantalones y las faldas, de acuerdo con el contorno de las caderas.

En el patrón-Burda se incluyen los márgenes para la holgura necesaria.

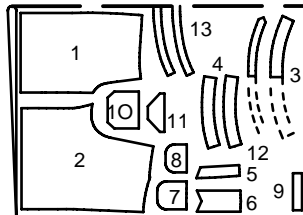
PATTERN LAYOUTS
PLANS DE COUPE
PLANOS DE CORTE

55" 140 CM



38-46

55" 140 CM



34+36