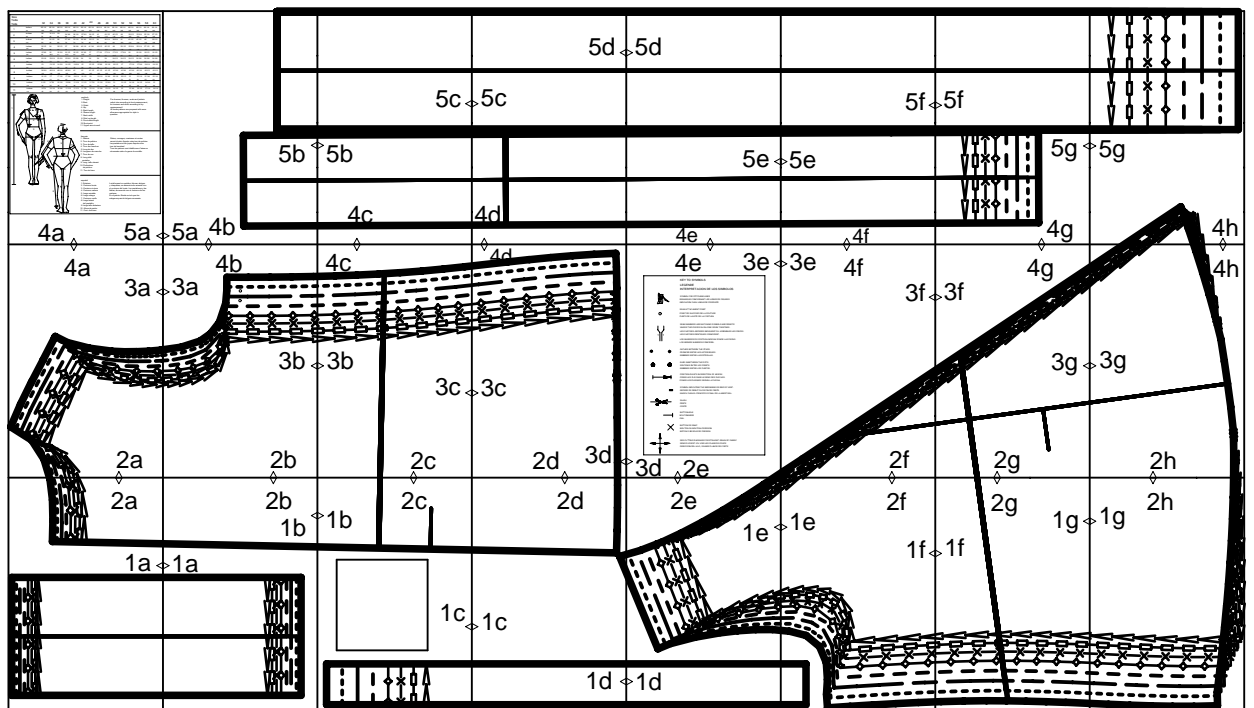
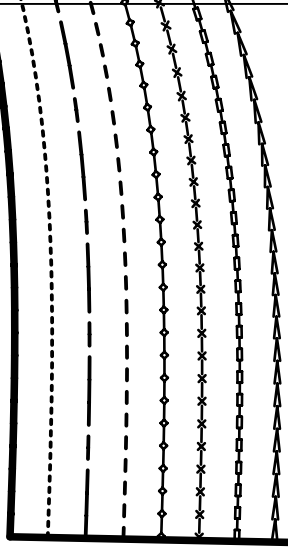


burdastyle download 7911 A

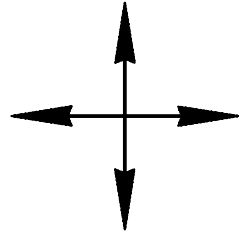
layout drawing



2a



1a



FOLD
 PLIURE
 DOBLEZ

32
 3



2b

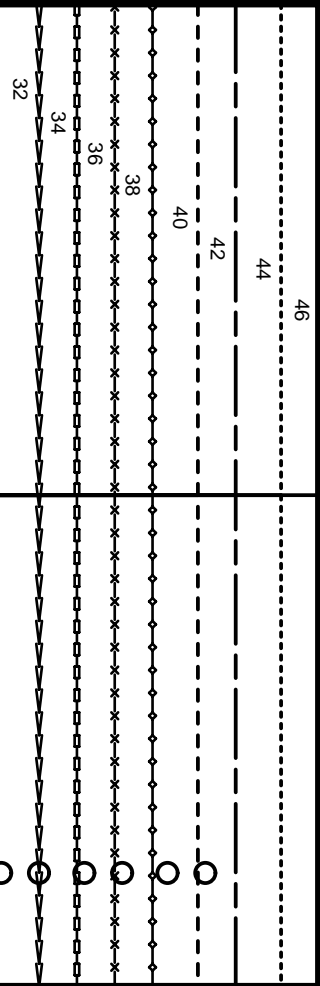
1b

CENTER BACK FOLD STRAIGHT GRAIN
PLIURE DU TISSU MILIEU DOS DROIT FIL
CENTRO POSTERIOR DOBLEZ DIR.HILO

1a

4

BAND
PATTE/PAREMENT
CENEFA



5/8" (1,5cm)

SEAM ALLOWANCE INCLUDED
AVEC VALEUR DE COUTURE
CON MARGEN DE COSTURA

7911

Burda
STYLE

www.burdastyle.com

2c

1b

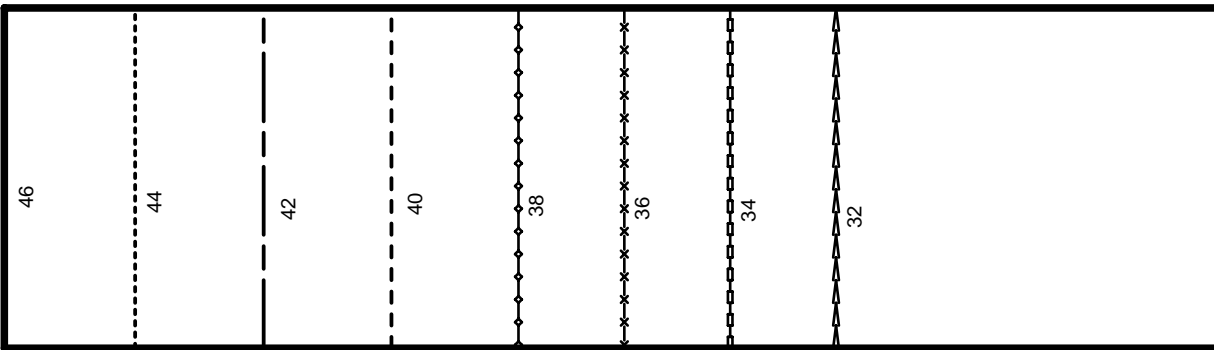
WAIST
TAILLE
CINTURA

test square

side length

4 inches (10 cm)

1c



2d

STRAIGHT GRAIN
DROIT FIL
SENTIDO HILO

Burda
STYLE

www.burdastyle.com

1c

6

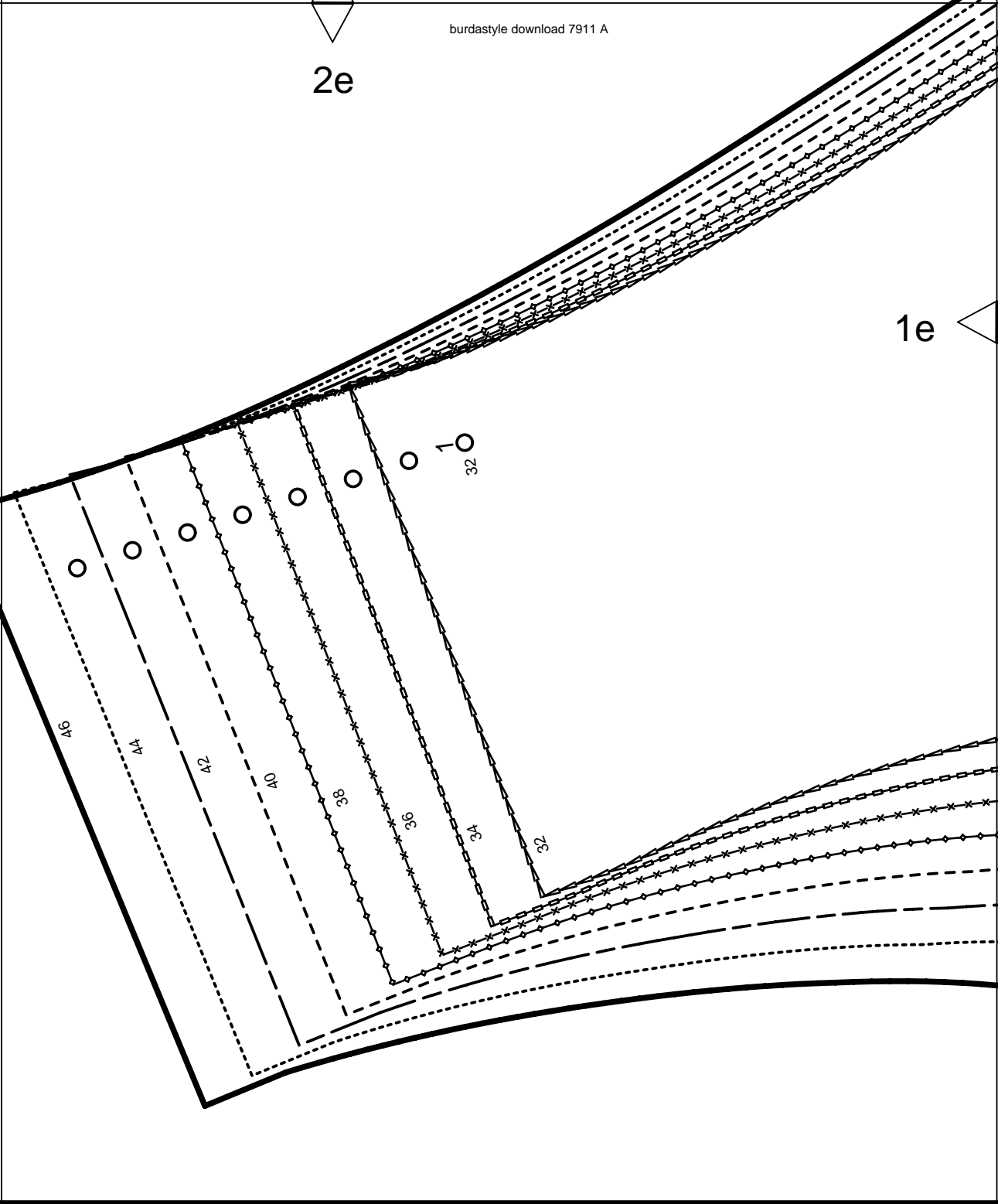


7911

1d

2e

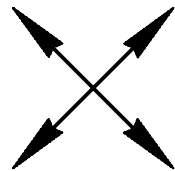
1e



1d

Burda
STYLE

www.burdastyle.com



2f

1e

1

FRONT
DEVANT
DELANTERO



SEAM ALLOWANCE INCLUDED
AVEC VALEUR DE COUTURE
CON MARGEN DE COSTURA

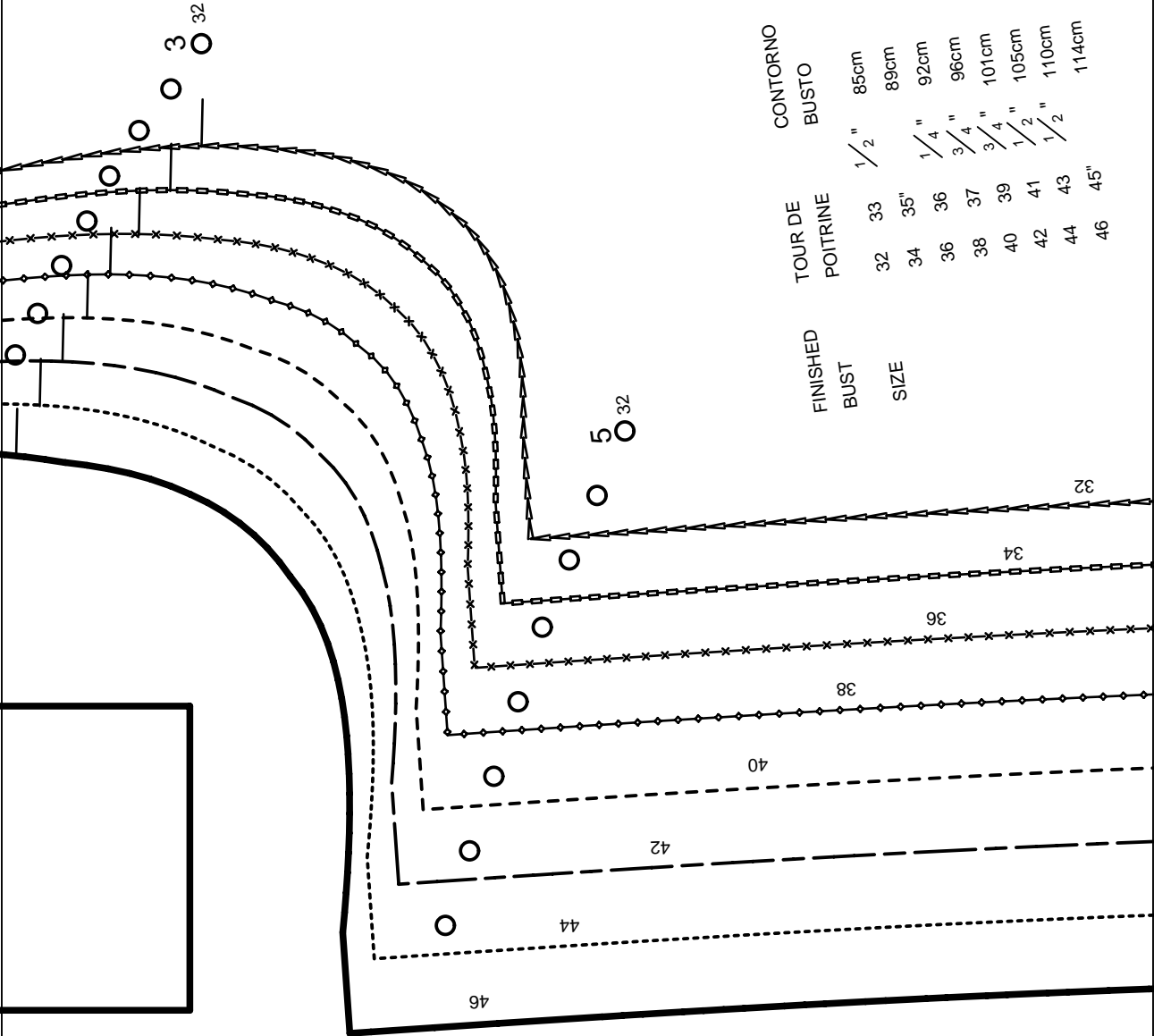
7911

5/8"
(1.5cm)

BURDA
STYLE

www.burdastyle.com

1f



FINISHED BUST	TOUR DE POITRINE	CONTOURNO BUSTO
32	33	1/2" 85cm
34	35"	89cm
36	36	1/4" 92cm
38	37	3/4" 96cm
40	39	3/4" 101cm
42	41	1/2" 105cm
44	43	1/2" 110cm
46	45"	114cm

2g

1g

1f

LENGTHEN OR SHORTEN HERE
RALLONGER OU RACCOURCIR ICI
ALARGAR O ACORTAR AQUI

The handwriting practice section consists of several horizontal lines with different patterns and symbols. From top to bottom, the lines are: a line with small triangles, a line with small squares, a line with small crosses, a line with small diamonds, a dashed line, a solid line, and a dotted line. A slanted line, representing a letter stem, passes through these lines from the top left to the bottom right. Vertical tick marks are placed on the right side of each line to indicate alignment. The bottom of the page features a wavy line representing a baseline.

2h

1g

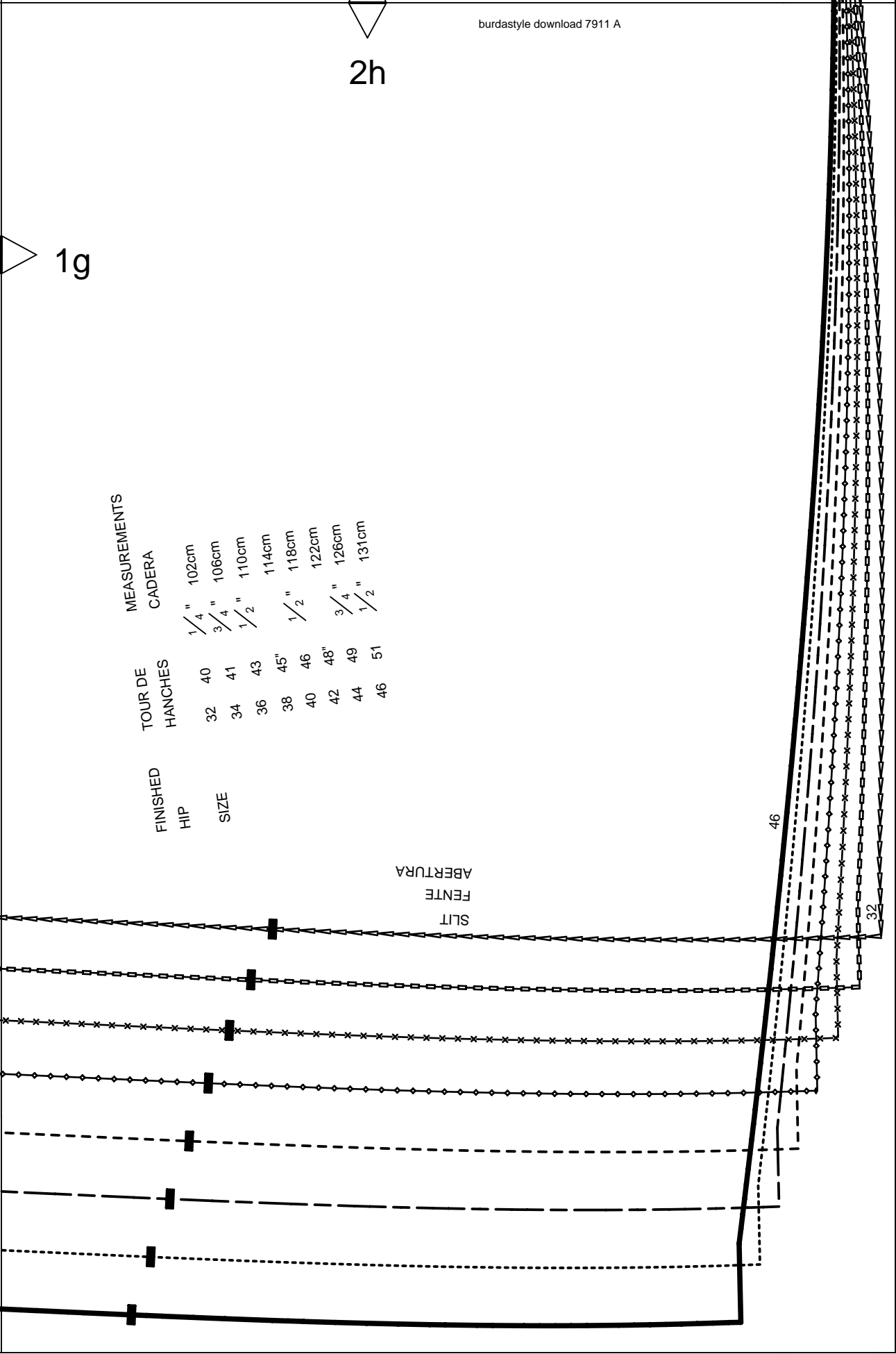
MEASUREMENTS

FINISHED HIP	TOUR DE HANCHES	CADERA
32	40	102cm
34	41	106cm
36	43	110cm
38	45"	114cm
40	46	118cm
42	48"	122cm
44	49	126cm
46	51	131cm

ABERTURA
FENTE
SLIT

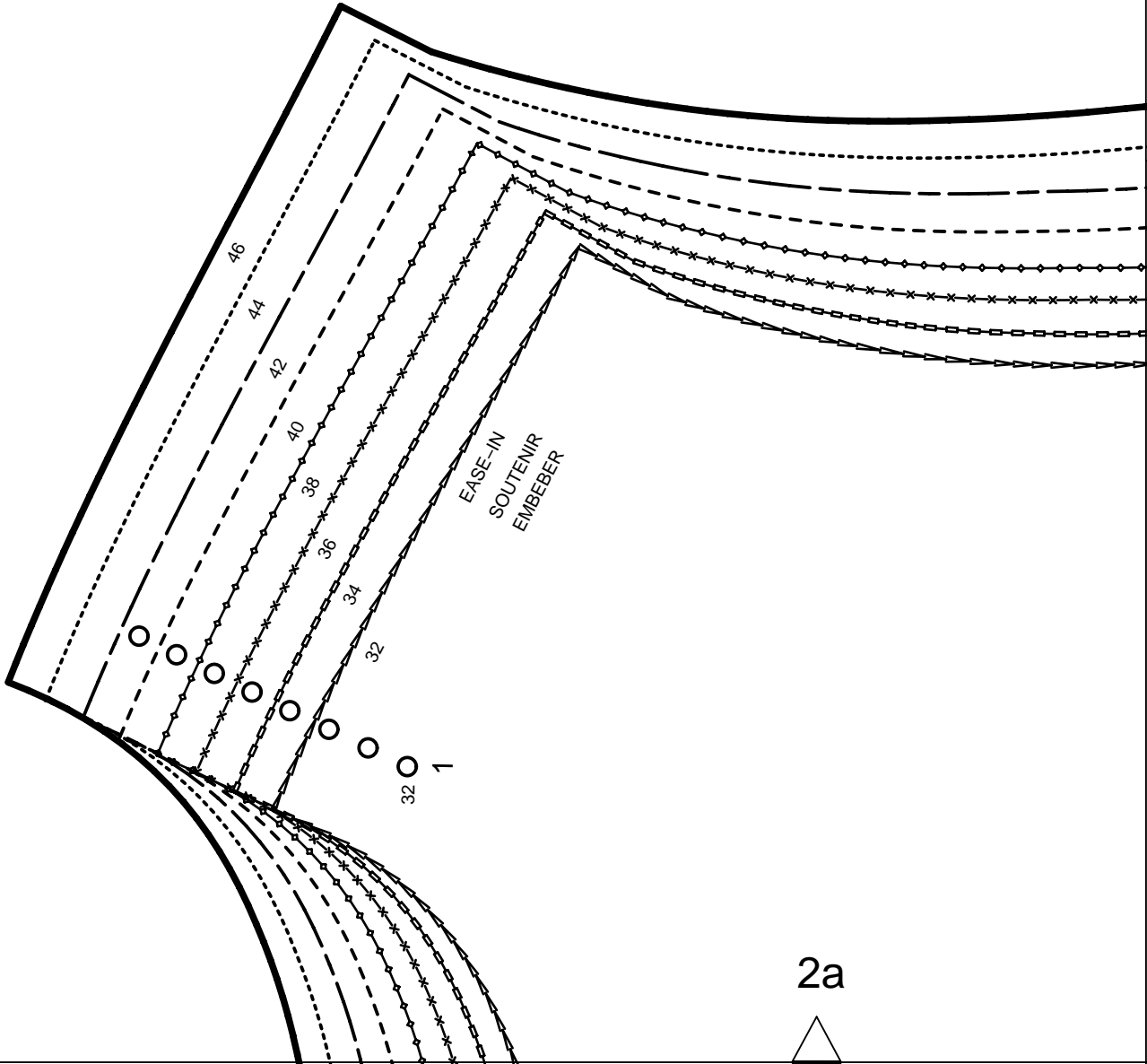
46

32

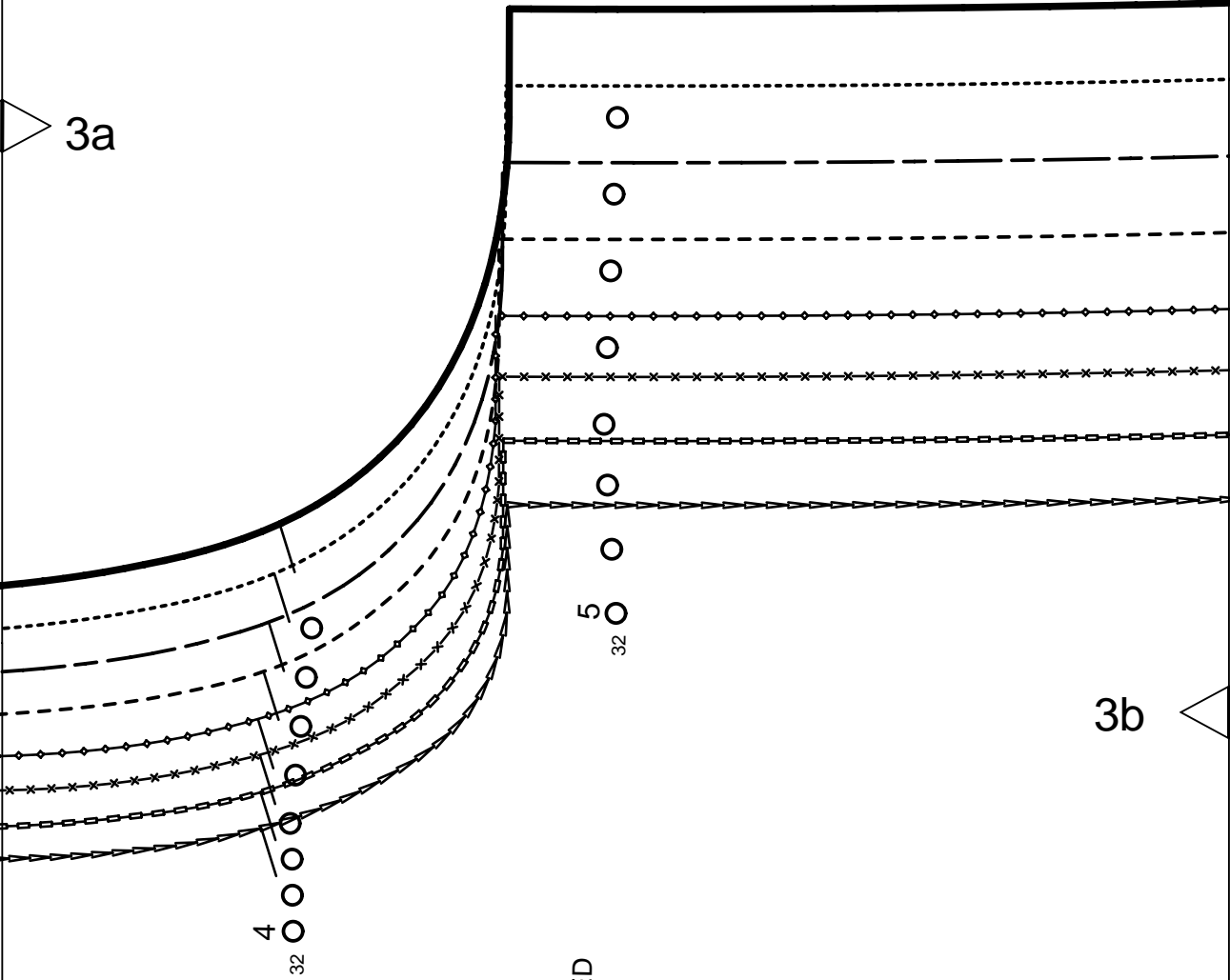


4a

3a



2a



2

BACK
DOS
ESPALDA

ON THE FOLD

DANS LA PLIURE DU TISSU
CON CANTO DOBLADO



SEAM ALLOWANCE INCLUDED
AVEC VALEUR DE COUTURE
CON MARGEN DE COSTURA

5/8"
(1,5cm)

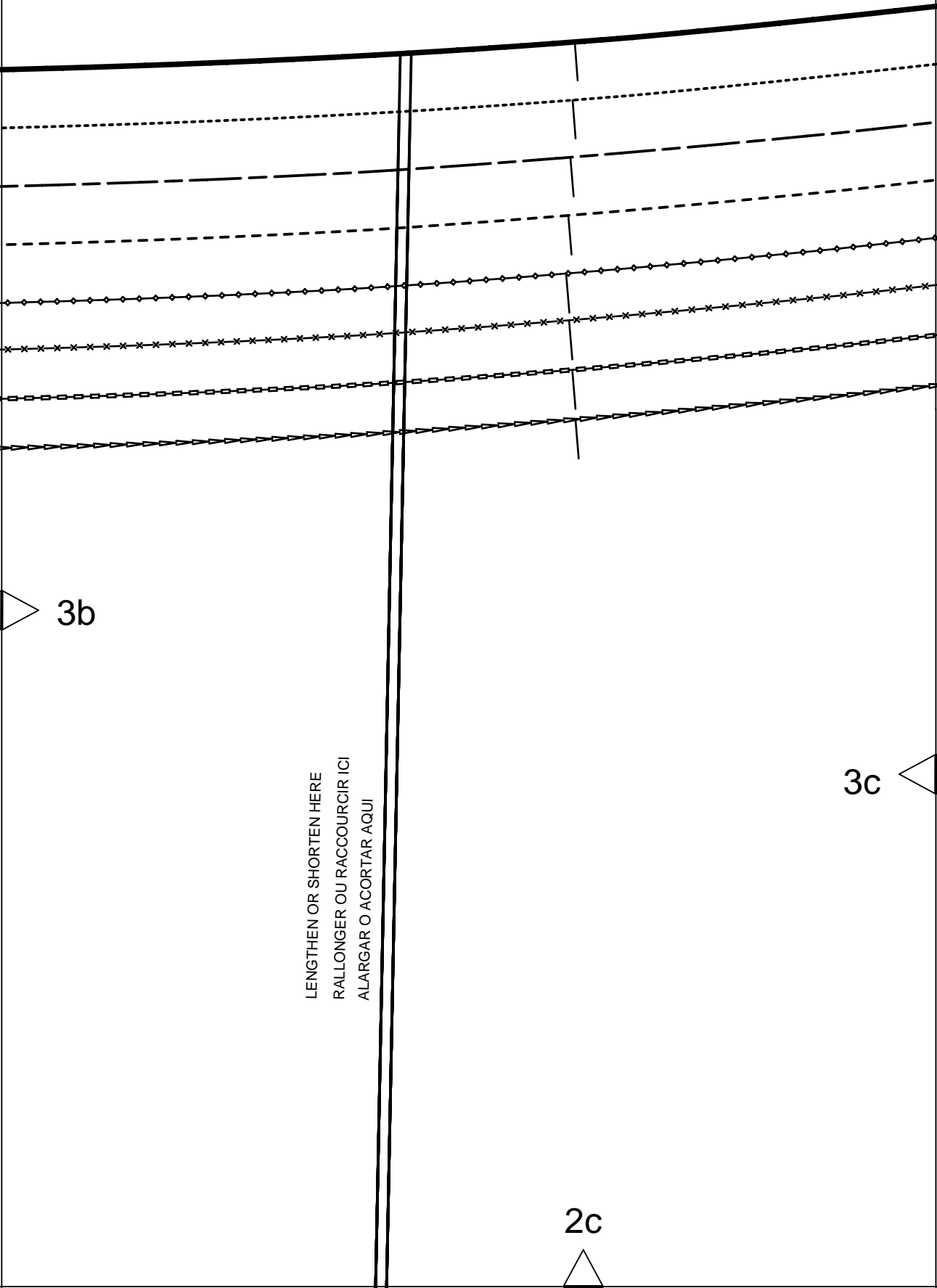
7911

Burda
STYLE

www.burdastyle.com

2b

4c



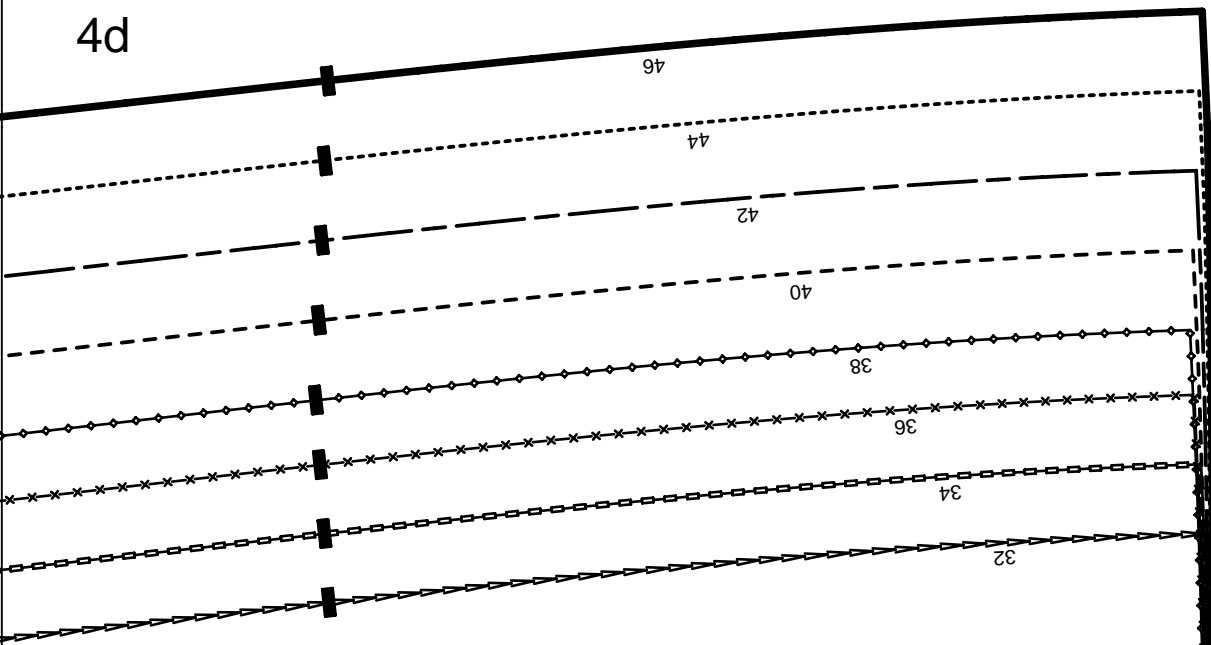
3b

LENGTHEN OR SHORTEN HERE
RALLONGER OU RACCOURCIR ICI
ALARGAR O ACORTAR AQUI

3c

2c

4d



3c

2d

3d

KEY TO SYMBOLS

LEGENDE

INTERPRETACION DE LOS SIMBOLOS



SYMBOL FOR STITCHING LINES
REMARQUE CONCERNANT LES LIGNES DE PIURES
INDICACION PARA LINEAS DE PESPUNTE



SEAM ATTACHMENT POINT
POINT DE RACCORD DE LA COUTURE
PUNTO DE AJUSTE DE LA COSTURA



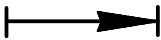
SEAM NUMBERS ARE MATCHING SYMBOLS AND DENOTE
WHERE TWO PIECES SHOULD BE SEWN TOGETHER.
LES CHIFFRES-REPERES INDIQUENT OU ASSEMBLER LES PIECES.
LES CHIFFRES IDENTIQUES COINCIDENT.
LOS NUMEROS DE COSTURA INDICAN DONDE LAS PIEZAS.
LOS MISMOS NUMEROS CONCIDEN.



GATHER BETWEEN THE STARS.
FRONCER ENTRE LES ASTERISQUES.
EMBEBER ENTRE LAS ESTRELLAS.



EASE IN BETWEEN THE DOTS.
SOUTENIR ENTRE LES POINTS.
EMBEBER ENTRE LOS PUNTOS.



POSITION PLEATS IN DIRECTION OF ARROW.
POSER LES PLIS DANS LE SENS DES FLECHES.
PONER LOS PLIEQUES SEGUN LA FLECHA.



SYMBOL INDICATING THE BEGINNING OR END OF VENT.
REPERE DE DEBUT OU DE FIN DE FENTE.
MARCA PARA EL PRINCIPIO O FINAL DE LA ABERTURA.



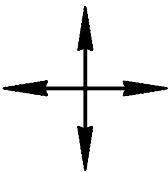
SLASH
FENTE
CORTE



BUTTONHOLE
BOUTONNIERE
OIAL



BUTTON OR SNAP
BOUTON OU BOUTON-PRESSION
BOTON O BROCHE DE PRESION



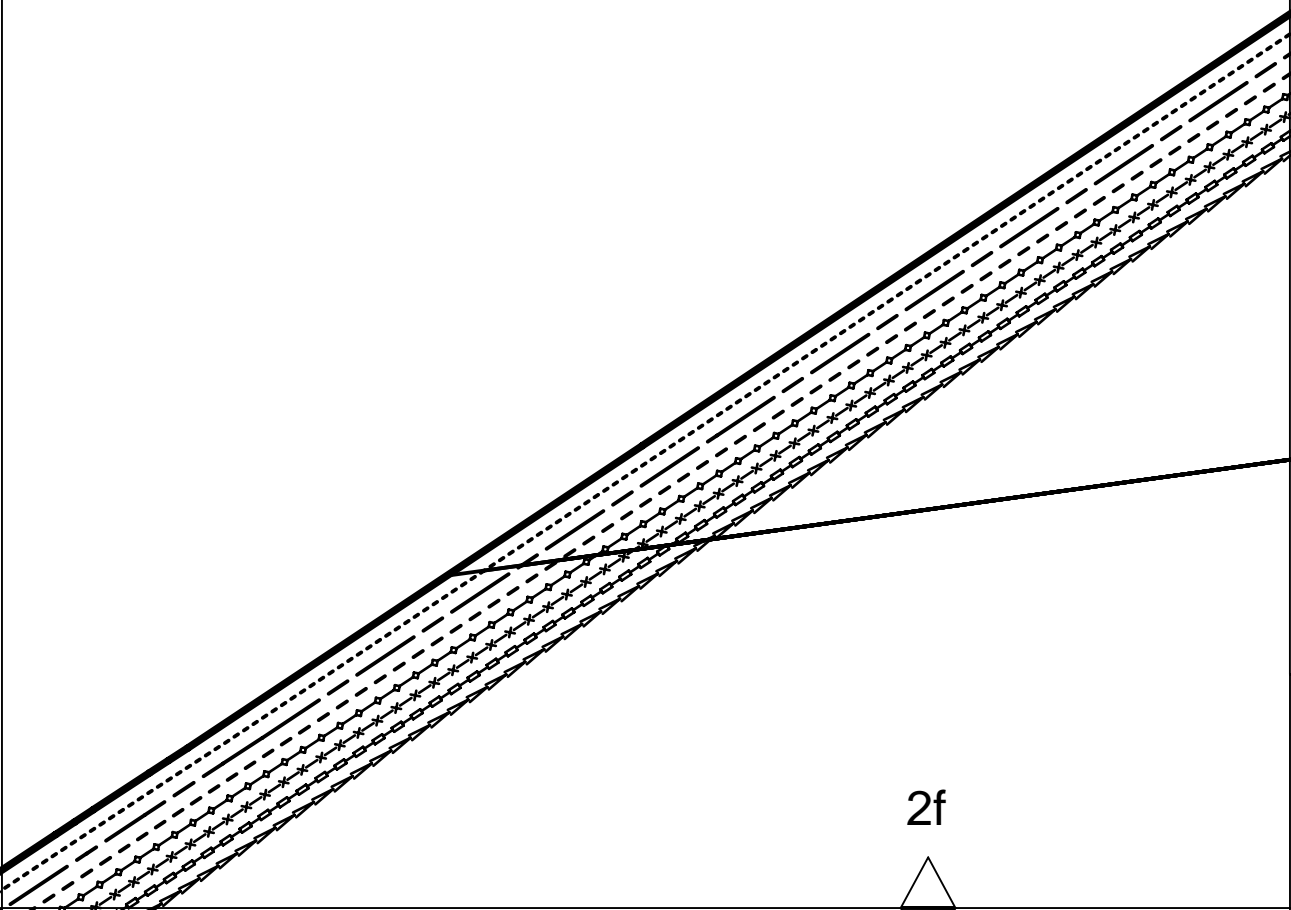
SEE CUTTING DIAGRAMS FOR STRAIGHT GRAIN OF FABRIC
SENS DU DROIT-FIL VOIR LES PLANS DE COUPE
DIRECCION DEL HILO, VEANSE PLANOS DE CORTE

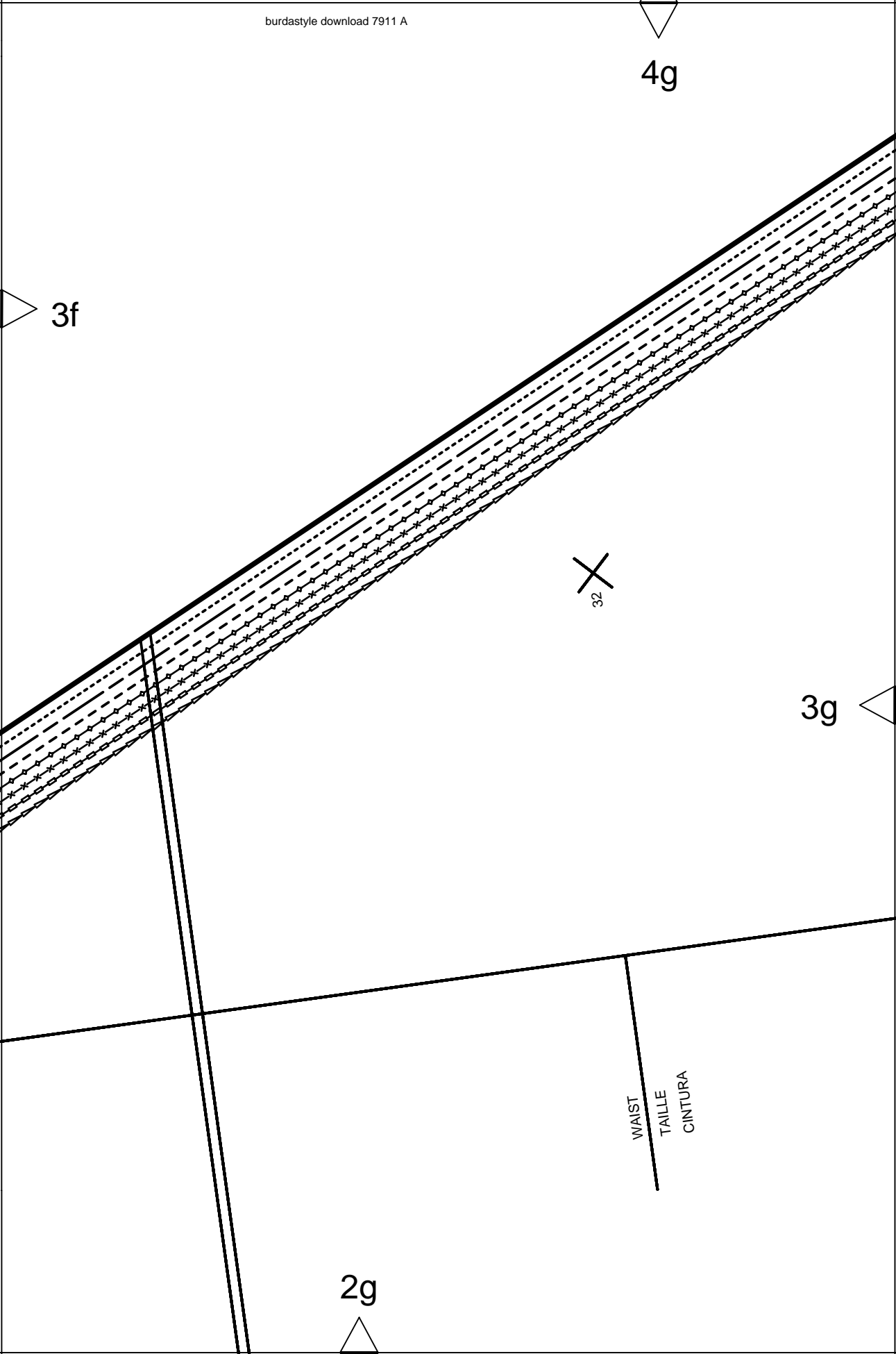
4f

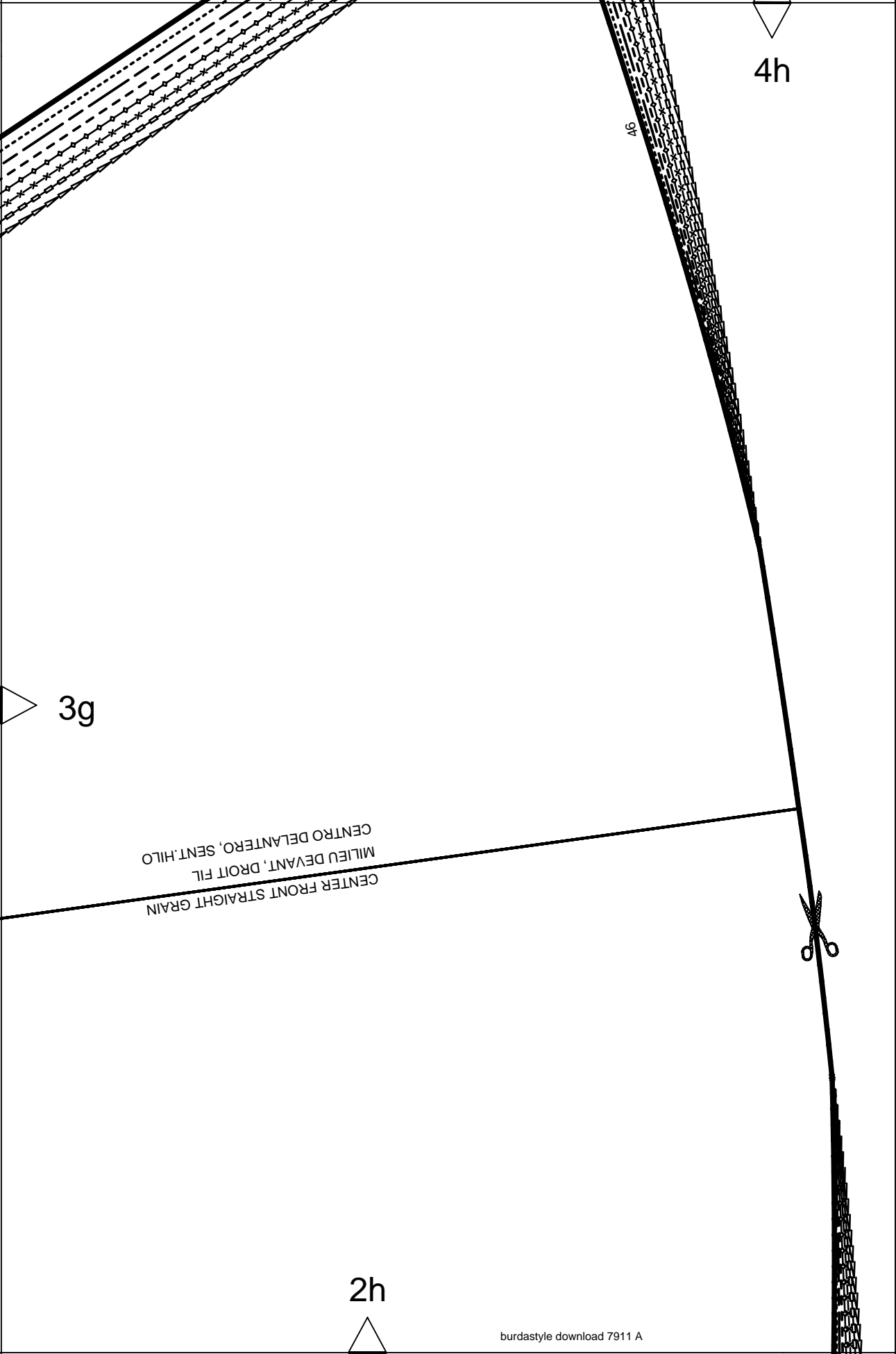
3e

3f

2f







4h

4g



3g

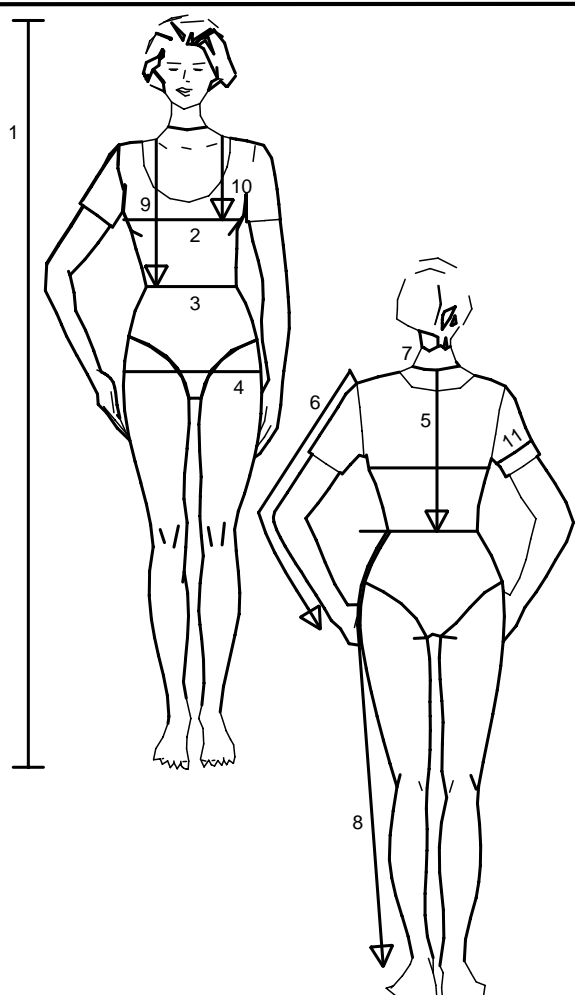
CENTER FRONT STRAIGHT GRAIN
MILIEU DEVANT, DROIT FIL
CENTRO DELANTERO, SENT.HILO



2h



Size Taille Talla		32	34	36	38	40	42	44	46	48	50	52	54	56	58	60
1	inches	66 1/4	66 1/4	66 1/4	66 1/4	66 1/4	66 1/4	66 1/4	66 1/4	66 1/4	66 1/4	66 1/4	66 1/4	66 1/4	66 1/4	66 1/4
	cm	168	168	168	168	168	168	168	168	168	168	168	168	168	168	168
2	inches	30	31 1/2	33	34 3/4	36 1/4	37 3/4	39 1/2	41	43 1/2	45 1/2	48	50 1/2	52 3/4	55 1/4	57 1/2
	cm	76	80	84	88	92	96	100	104	110	116	122	128	134	140	146
3	inches	23	24 1/2	26	27 3/4	29 1/4	30 3/4	32 1/2	34	36 1/4	38 3/4	41	43 1/2	45 1/2	48	50 1/2
	cm	58	62	66	70	74	78	82	86	92	98	104	110	116	122	128
4	inches	32 1/2	34	35 1/2	37	38 3/4	40 1/4	41 3/4	43 1/2	45 1/2	48	50 1/2	52 3/4	55 1/4	57 1/2	60
	cm	82	86	90	94	98	102	106	110	116	122	128	134	140	146	152
5	inches	15 3/4	16	16 1/4	16 1/2	16 1/2	16 3/4	17	17 1/4	17 1/4	17 1/2	17 3/4	18	18 1/4	18 1/2	18 1/2
	cm	40	40,5	41	41,5	42	42,5	43	43,5	44	44,5	45	45,5	46	46,5	47
6	inches	23 1/4	23 1/4	23 1/4	23 3/4	23 3/4	24	24	24	24	24 1/2	24 1/2	24 1/2	24 3/4	24 3/4	24 3/4
	cm	59	59	59	60	60	61	61	61	61	62	62	62	63	63	63
7	inches	13	13 1/2	14 1/4	14 1/2	14 3/4	15	15 1/2	15 3/4	16 1/4	16 1/2	17	17 1/4	17 3/4	18 1/4	18 1/2
	cm	33	34	35	36	37	38	39	40	41	42	43	44	45	46	47
8	inches	39 3/4	40 1/4	40 1/4	40 3/4	41	41	41 1/2	41 1/2	41 1/2	41 3/4	41 3/4	41 3/4	42 1/4	42 1/2	42 1/2
	cm	101	102	102	103	104	104	105	105	105	106	106	106	107	108	108
9	inches	16 1/2	17	17 1/4	17 3/4	18 1/4	18 1/2	19	19 1/4	19 3/4	20 1/4	20 1/2	21	21 1/4	21 3/4	22 1/4
	cm	42	43	44	45	46	47	48	49	50	51	52	53	54	55	56
10	inches	9 1/2	9 7/8	10 1/4	10 3/4	11 1/8	11 1/2	11 7/8	12 1/4	12 3/4	13	13 1/2	14 1/4	14 1/2	14 3/4	15
	cm	24	25	26	27	28	29	30	31	32	33	34	35	36	37	38
11	inches	9 7/8	10 1/4	10 3/4	11 1/8	11 1/2	11 7/8	12 1/4	12 3/4	13 1/2	14 1/2	15	15 3/4	16 1/2	17 1/4	18 1/4
	cm	25	26	27	28	29	30	31	32	34	36	38	40	42	44	46



- englisch
1. Height
 2. Bust
 3. Waist
 4. Hip
 5. Back length
 6. Sleeve length
 7. Neck width
 8. Side leg length
 9. Front waist length
 10. Bust point
 11. Upper arm circumf.

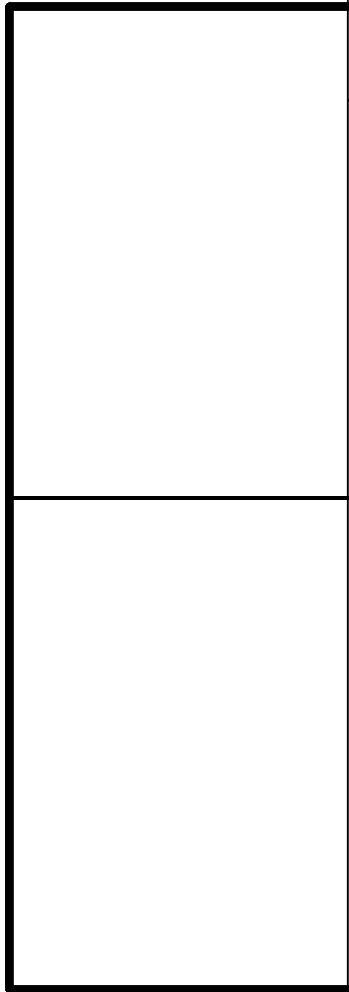
For dresses, blouses, coats and jackets select size according to bust measurement, for trousers and skirts according to hip measurement!
All burda patterns are prepared with ease allowance appropriate for style in question.

- français
1. Stature
 2. Tour de poitrine
 3. Tour de taille
 4. Tour des hanches
 5. Long. du dos
 6. Longueur de manche
 7. Tour de cou
 8. Long. côté pantalon
 9. Long. taille devant
 10. Profondeur de poitrine
 11. Tour du bras

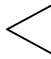
Robes, corsages, manteaux et vestes seront choisis d'après votre tour de poitrine les pantalons et les jupes d'après votre tour de hanches!
Tous les patrons sont établis avec l'aisance nécessaire selon le genre du modèle.


- español
1. Estatura
 2. Contorno busto
 3. Contorno cintura
 4. Contorno cadera
 5. Largo espalda
 6. Largo manga
 7. Contorno cuello
 8. Largo lateral del pantalón
 9. Largo talle delantero
 10. Altura de pecho
 11. Cont. de brazo

La talla para los vestidos, blusas, abrigos y chaquetas, se determina de acuerdo con el contorno del busto. Los pantalones y las faldas, de acuerdo con el contorno de las caderas.
En el patrón-Burda se incluyen los márgenes para la holgura necesaria.



○ 2

5b 

 5a

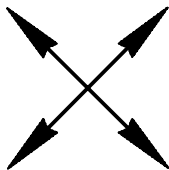
4b 

DOBLEZ
PLIURE
FOLD

5c



5b

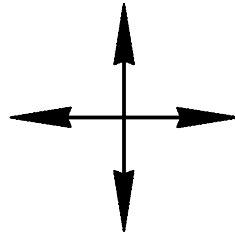


FOLD
PLIURE
DOBLEZ

4c



5d



5c

Burda
STYLE

www.burdastyle.com

LENGTHEN OR SHORTEN HERE
RALLONGER OU RACCOURCIR ICI
ALARGAR O ACORTAR AQUI

4d

5d

www.burdastyle.com
Burda
STYLE

3

NECK BAND
PAREMENT DU DECOLLETE
CENEFA ESCOTE

5e



5/8"

(1,5cm)

SEAM ALLOWANCE INCLUDED
AVEC VALEUR DE COUTURE
CON MARGEN DE COSTURA

7911

4e

7 9 1 1

SEAM ALLOWANCE INCLUDED
AVEC VALEUR DE COUTURE
CON MARGEN DE COSTURA

(1.5cm)

5/8"



BELT
CEINTURE
CINTURON

5

5f

32

46

5e

4f

5g

46

44

42

40

38

36

34

32

CENTER BACK SEAM
COUTURE MILIEU DOS
CENTRO POST. COSTURA

4g

5f

CENTER SEAM
MILIEU COUTURE
CENTRO COSTURA

46

44

42

40

38

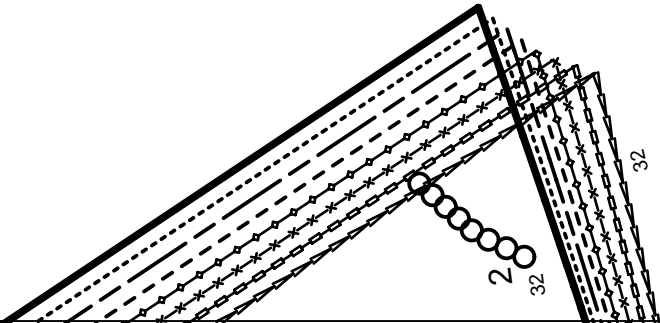
36

34

32

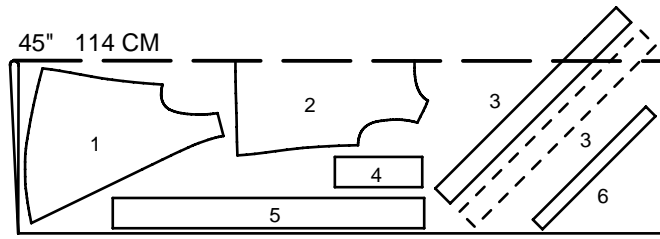
CENTER SEAM
MILIEU COUTURE
CENTRO COSTURA

4h

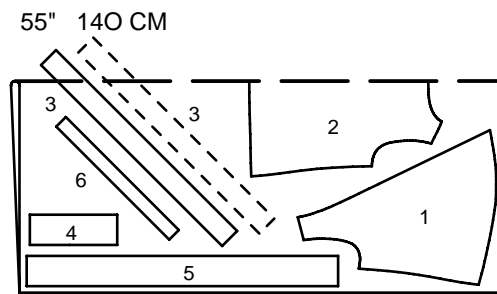


5g

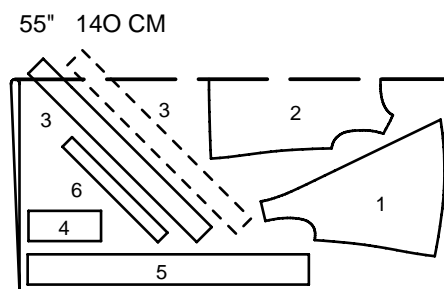
PATTERN LAYOUTS
PLANS DE COUPE
PLANOS DE CORTE



32-46



38-46



32-36