

burda Download-Pattern Jacket 7930 - Instructions



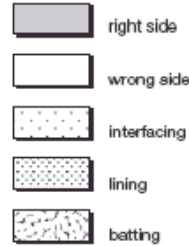
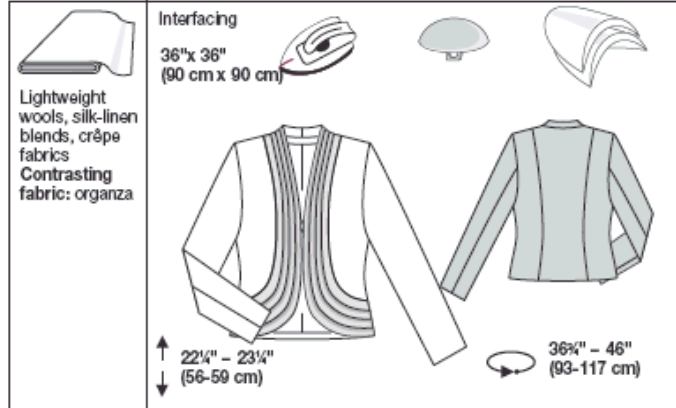
average

fitted

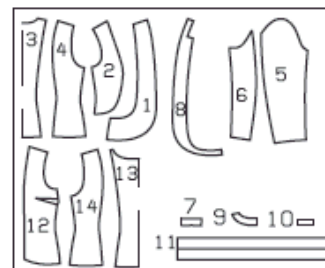
burda sizes	46 ins / 114 cm								56 ins / 140 cm							
	34	36	38	40	42	44	46	48	34	36	38	40	42	44	46	48
yds	1 1/4	1 1/4	1 3/4	1 3/4	2 0/4	2 0/4	2 0/4	2 0/4	1 3/4	1 3/4	1 3/4	1 3/4	1 3/4	1 3/4	1 3/4	1 3/4
m	1.60	1.60	1.85	1.85	2.00	2.00	2.00	2.00	1.35	1.35	1.35	1.50	1.55	1.55	1.55	1.55
Contrasting fabric	yds	1 1/4	1 1/4	1 1/4	1 1/4	1 1/4	1 1/4	1 1/4	1 1/4	1 1/4	1 1/4	1 1/4	1 1/4	1 1/4	1 1/4	1 1/4
m	1.35	1.35	1.45	1.45	1.50	1.50	1.50	1.50	1.05	1.05	1.10	1.10	1.20	1.20	1.20	1.20
Lining	yds	1 1/2	1 1/2	1 1/2	1 1/2	1 1/2	1 1/2	1 1/2	1 1/2	1 1/2	1 1/2	1 1/2	1 1/2	1 1/2	1 1/2	1 1/2
m	1.25	1.25	1.30	1.30	1.35	1.35	1.35	1.35	1.25	1.25	1.30	1.30	1.35	1.35	1.35	1.35

→ with nap

* without nap



Patternpieces:



JACKET

- A 1 Center Front 2x
- A 2 Side Front 2x
- A 3 Center Back 1x
- A 4 Side Back 2x
- A 5 Upper Sleeve 2x
- A 6 Undersleeve 2x
- A 7 Back Collar 1x
- A 8 Front Facing 2x
- A 9 Back Facing 1x
- A 10 Loop 1x
- A 11 Band 8x

Lining Pieces:

- A 12 Front 2x
- A 13 Center Back 1x
- A 14 Side Back 2x

CUTTING LAYOUTS ARE ON THE PATTERN SHEET

PREPARING PATTERN PIECES

Choose your size according to the Burda measurement chart on the pattern sheet: dresses, blouses, jackets and coats according to your bust measurement, pants and skirts according to your hip measurement. Adjust the pattern pieces, if necessary, by adding or subtracting the number of inches that your measurements differ from the measurements given in the Burda chart.

Cut out pattern pieces in the required size from the pattern sheet:

The band joining lines on piece 1 are marked for size 8 (34).

For the other sizes, just lengthen the front joining line to the shoulder. Mark the other two lines evenly spaced between the panel seam and front joining line.

LENGTHENING OR SHORTENING THE PATTERN PIECES

Our pattern is calculated for a height of 5' 6" (168 cm). If you are taller or shorter, you may adjust the pattern to fit your size at the lines marked "lengthen or shorten here".

→ **Make sure that you adjust all pieces of one model by the same amount at the same lines.**

How to lengthen and shorten pattern pieces:

Cut the pattern pieces along the marked lines. To **lengthen**, slide the two halves of the pattern piece as far apart as necessary. To **shorten**, overlap the two halves of the pattern piece as far as necessary. Even out the side edges.

CUTTING OUT

FOLD (---) means: here is the center of a pattern piece but in no case a cut edge or a seam. The piece should be cut double, with the fold line forming the center line. Pattern pieces that are outlined with a broken line in the cutting diagrams are to be placed face down on the fabric.

The cutting diagrams on the pattern sheet show how the pattern pieces should be placed on the fabric.

AB

For a single layer of fabric, the pattern pieces are pinned to the right side.

For double layers of fabric, the right sides are facing and the pattern pieces are pinned to the wrong side.

The pattern pieces that are shown in the cutting diagram extending over the fold of the fabric should be cut last from a single layer of fabric.

CONTRASTING FABRIC

Cut piece 11 of contrasting fabric.

→ See cutting diagrams on pattern sheet.

SEAM AND HEM ALLOWANCES are included on the pattern pieces:

A – 1 5/8" (4 cm) for hem (back pieces) and sleeve hem.

Use BURDA carbon paper to transfer all pattern lines and markings to the wrong side of the fabric pieces according to package instructions.

INTERFACING

Cut interfacing as illustrated and iron on the wrong side of the fabric pieces.

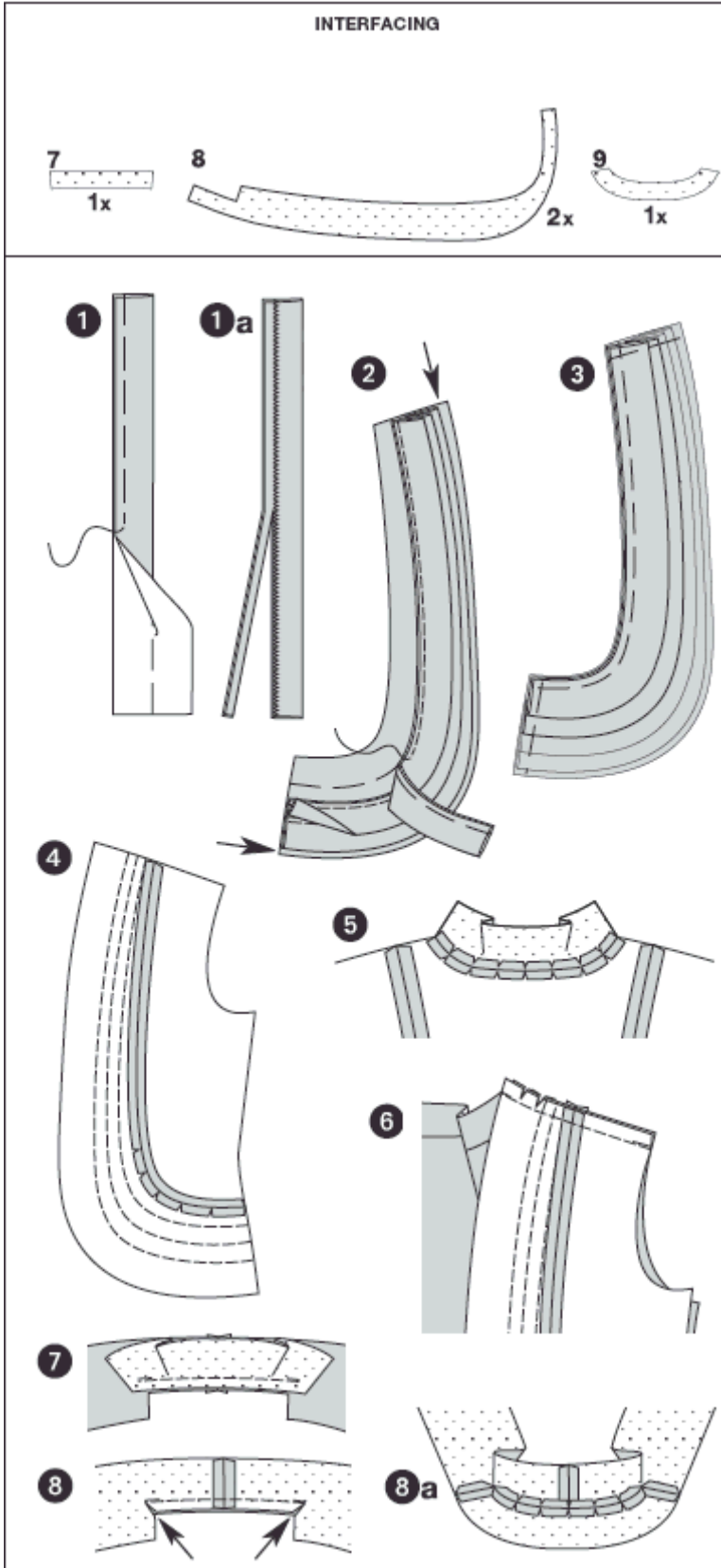
Also iron 1 5/8" (4 cm) strips of interfacing on hem allowance of back and sleeve pieces.

A LINING

Use pieces 5, 6 and 12, 13 and 14 to cut lining.

→ See cutting diagrams on pattern sheet

SEAM AND HEM ALLOWANCES are included on pattern pieces: 5/8" (1.5 cm) at all seams and edges.



SEWING

When sewing, right sides of fabric should be facing.

Transfer all pattern lines to the right side of the fabric with basting thread.

JACKET

Bands / Organza

1.) Fold bands on FOLD LINE, wrong side facing in. Press. Baste open edges together. Trim allowances on six bands for a finished width of 1 5/8" (4 cm). Neaten edges together.

Tip: If you do not have a serger, zigzag stitch the open edges together 5/8" (1.5 cm) wide. Then trim allowances close to stitching (1a).

Please note: The given pattern piece is for the longest (outer) band. Trim the others to the required length.

2.) Baste three bands each on fronts at joining lines, beginning on the outer line. Ease in band slightly along the curve. Press fold edge to shape, stretching slightly. Allowance at front edges overhangs (arrows).

3.) Baste the fourth band on each side edge. Baste short edges on allowances shoulder seams and side seams.

Panel Seams

4.) Lay side fronts right sides together with center fronts. Baste panel seams (seam number 1) and stitch. Stitch back panel seams likewise (seam number 3). Trim allowances of seams, clip curves and press open.

A

Back Collar

5.) Baste collar right sides together with back neck edge (seam number 2). Stitch. Trim allowances, clip curves and press open.

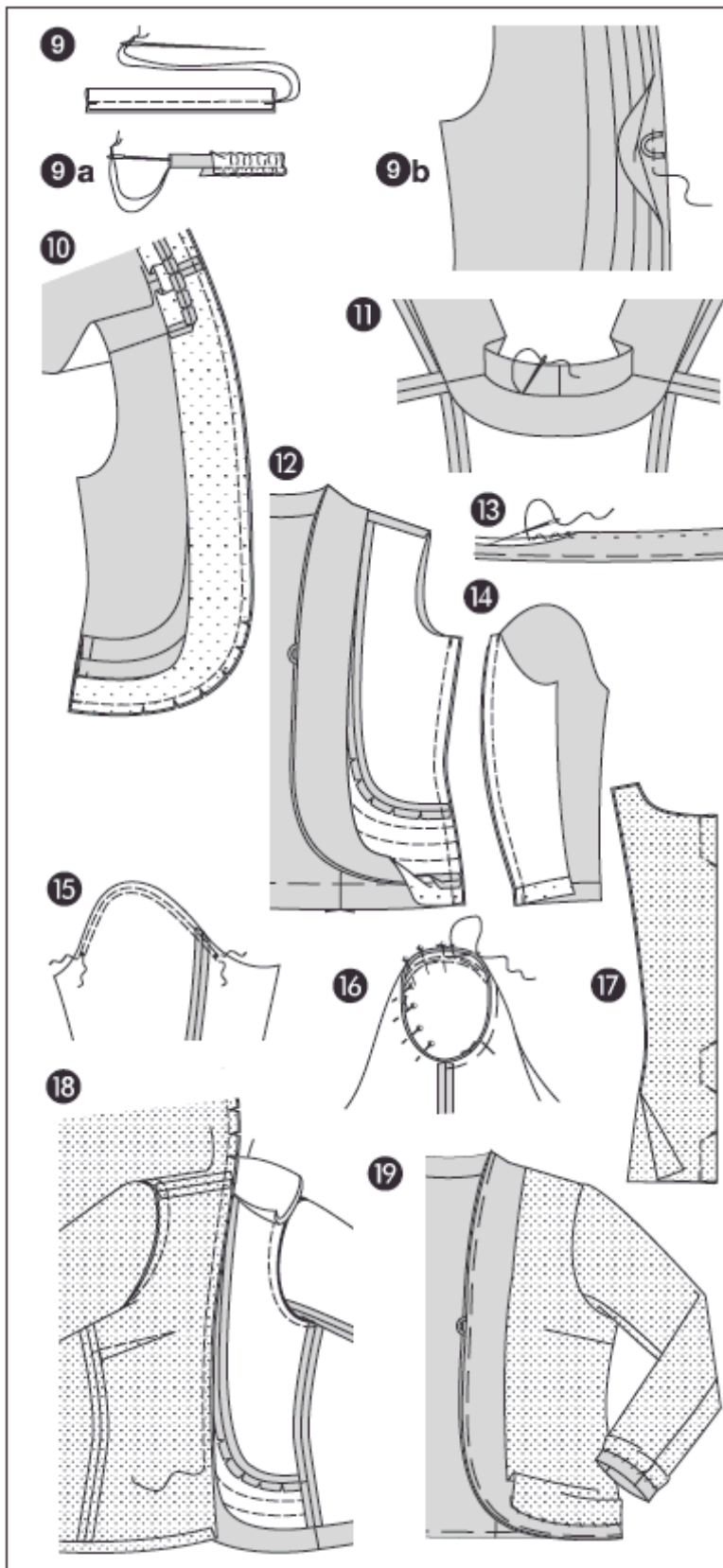
Shoulder Seams

6.) Lay fronts right sides together with back. Baste shoulder seams (seam number 4), matching panel seams. Stitch. Trim allowances, clip curves and press open.

Facings

Lay front facings right sides together. Stitch center back seam. Press allowances press open.

7.) Pin back facing right sides together with neck edge of front facings and stitch between corners.



8.) Clip front facings in corners close to stitching (arrows). Stitch shoulder edges of facings together (seam number 5). Trim allowances, clip curves and press open (8a).

Loop

9.) Fold strip lengthwise, right side facing in. Stitch 1/4" (0.7 cm) next to fold edge. Trim allowances. Leave a length of thread hanging. Insert into a darning needle and knot securely. Push needle eye-first through fabric to turn right side out (9a). Form a loop; baste on right front as marked. Adjust size of loop to fit your button (9b).

10.) Place facing, right side to right side, onto collar and front piece. Pin edges together and sew. **ATTENTION: Do not sew strips!** Trim seam allowance and perforate with tiny cuts along rounded edges. Turn facing inward. Pin edges and press.

11.) Pin collar joining seams together and stitch together from the wrong side with back stitches by hand.

Side Seams

12.) Lay facing at side edges downward, press allowances open. Lay fronts on back, right side facing in. Baste side seams (seam number 6), match facing seam with hemline in back. Stitch. Press seam allowances open.

13.) Turn facing and **hem** to inside, baste and press. Stitch hem loosely by hand.

Sleeves

14.) Lay undersleeve piece right sides together with top sleeve piece. Baste back seam (seam number 7) and stitch. Press seam allowances open.

15.) To ease tops of sleeves, stitch two closely spaced lines of machine basting (longest stitch setting) from ● to ●. Fold sleeves lengthwise, right side facing in. Stitch **front sleeve seams** (seam number 8). Press seam allowances open. Stitch **sleeve hem** as described and illustrated in step 13.

Setting in sleeves

To ease tops of sleeves, pull bobbin threads slightly.

16.) Pin sleeve into armhole, right sides facing. When setting in sleeves, 4 points are important for proper fit:
 → Match markings 9 on upper sleeve and front.
 Match marking on undersleeve with side seam.
 Match marking at top of sleeve with shoulder seam.

Distribute fullness evenly between the ●'s to avoid forming tucks. Baste and stitch sleeve from sleeve side.

Press seam allowances into sleeves.

Try on jacket. Insert SHOULDER PADS, pin in place and sew on at seam allowances of shoulder seams.

Lining / Ease Pleat

17.) Fold center back lengthwise, right side facing in. Stitch on marked lines for ease pleat. Press pleat to one side. Stitch **darts and seams** on lining, matching same seam numbers. Set sleeves into lining.

→Press allowances at lower edge of lining and sleeve linings to inside.

18.) Pin lining right sides together with facing, matching shoulder seams. Stitch, beginning and ending about 4" (10 cm) above hem edge. Clip lining at back neck edge. Press seam allowances onto lining. Pin lining inside jacket with wrong sides facing.