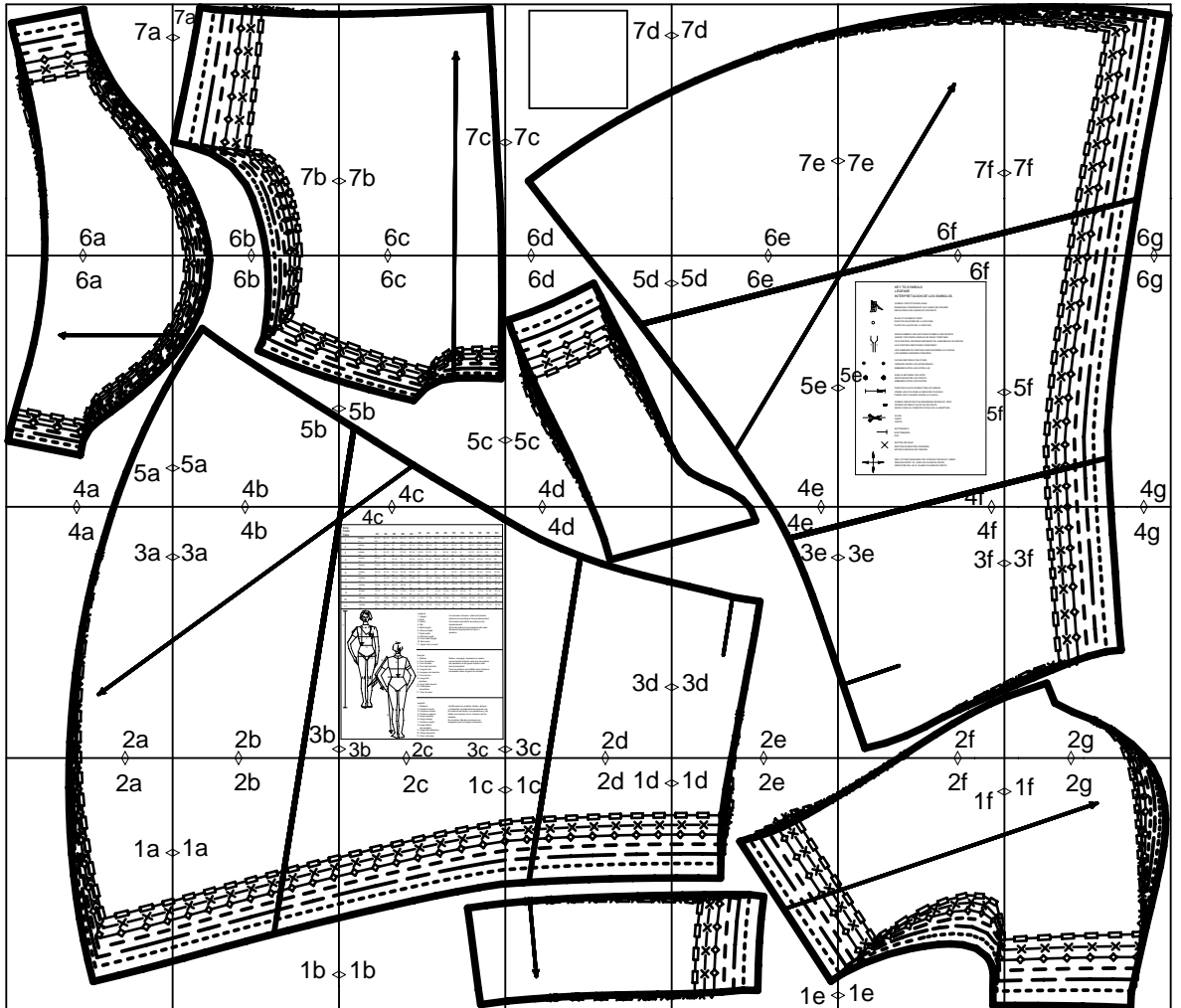
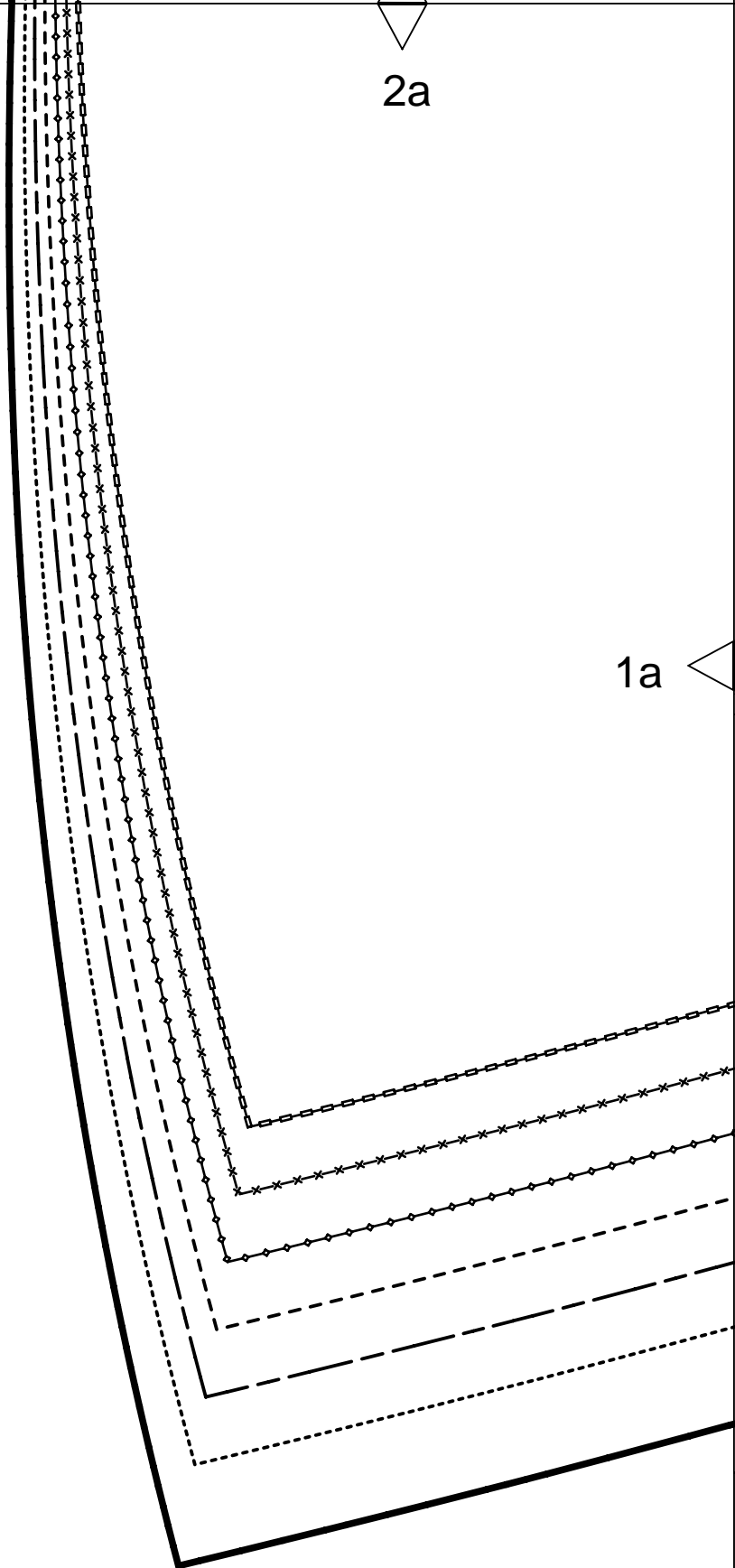


burdastyle download 7951 A

layout drawing





2a

1a

2b

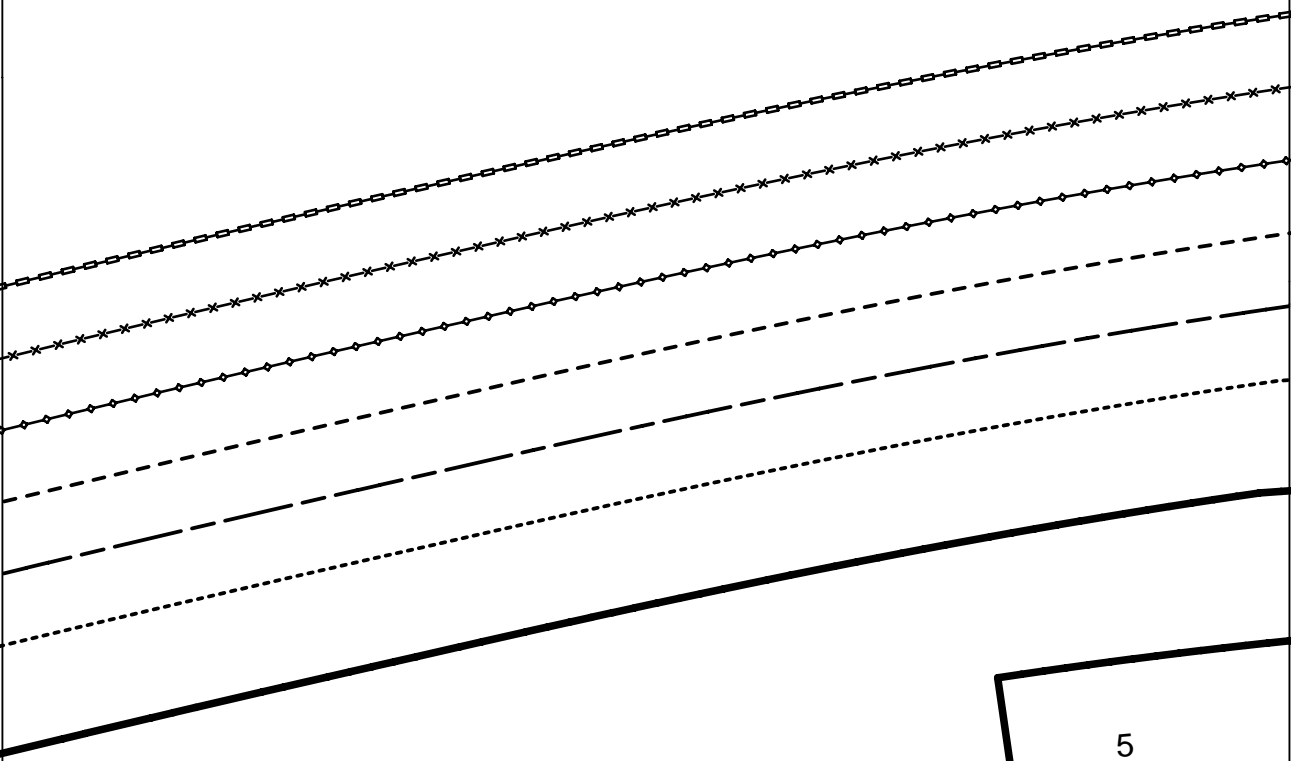
LENGTHEN OR SHORTEN HERE
RALLONGER OU RACCOURCIR ICI
ALARGAR O ACORTAR AQUÍ

1a

1b

2c

1c



1b

Burda
STYLE

www.burdastyle.com

5
 CENTER BACK ZIPPER
 MILIEU DOS, FERM. A GLISS.
 MEDIO POST. CREMALLERA
 6

2d

1c

1d

36

38

40

42

44

46

48

4

BACK YOKE
EMPIECMENT DOS
CANESU POST.

STRAIGHT GRAIN
DROIT FIL
SENTIDO HILO



FABRIC
TISSU
TELA



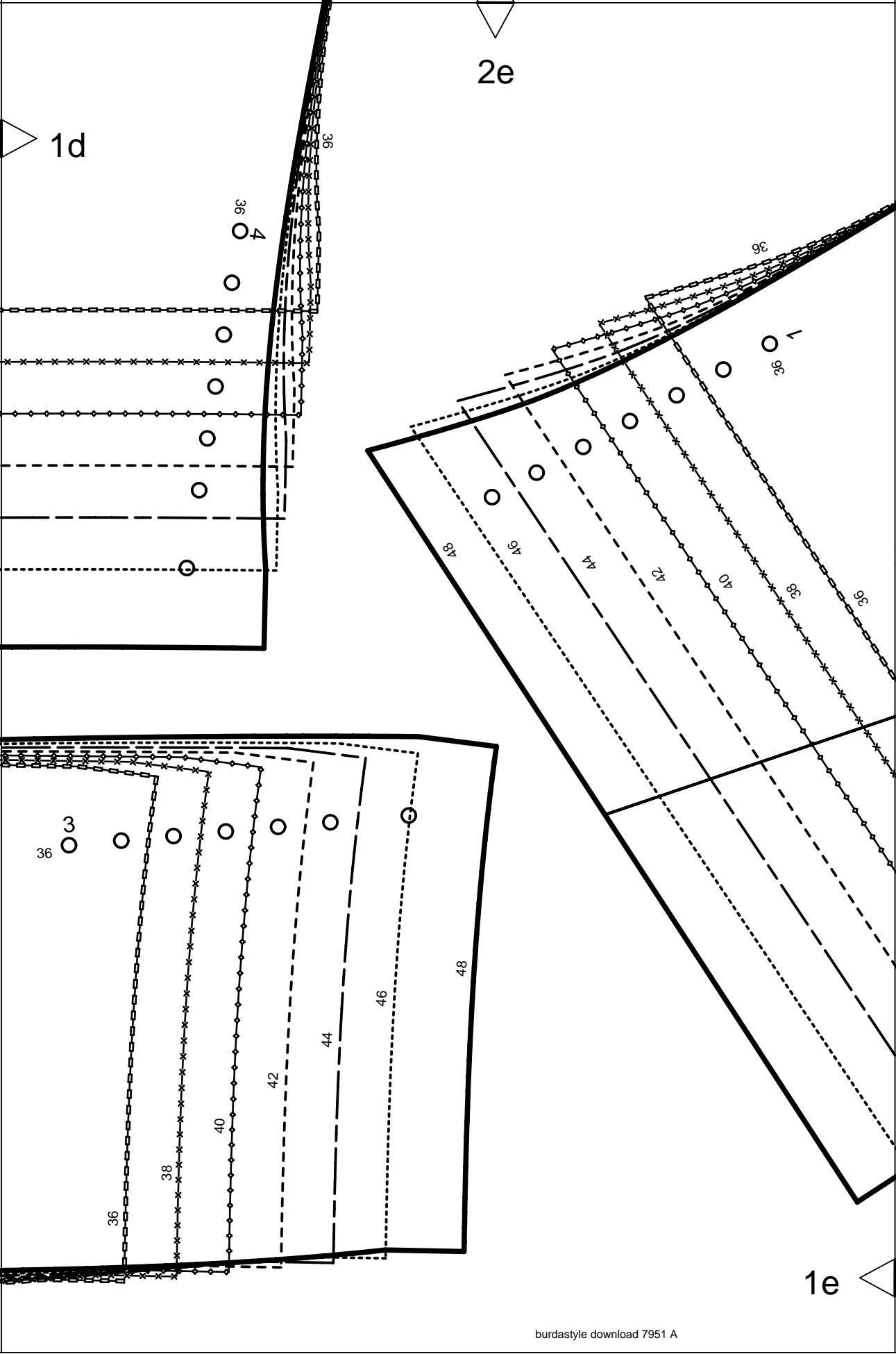
LINING
DOUBLURE
FORRO

5/8"
(1,5cm)

SEAM ALLOWANCE INCLUDED
AVEC VALEUR DE COUTURE
CON MARGEN DE COSTURA

7951





2f

1f

BURDA
STYLE

www.burdastyle.com

FRONT
DEVANT
DELANTERO

+

LINING
DOUBLURE
FORRO

FABRIC
TISSU
TELA

SEAM ALLOWANCE INCLUDED
MARGE VALEUR DE COUTURE
MARGEN DE COSTURA

7951

5/8" (1.5cm)



STRAIGHT GRAIN
DROIT FIL
SENTIDO HILO

1

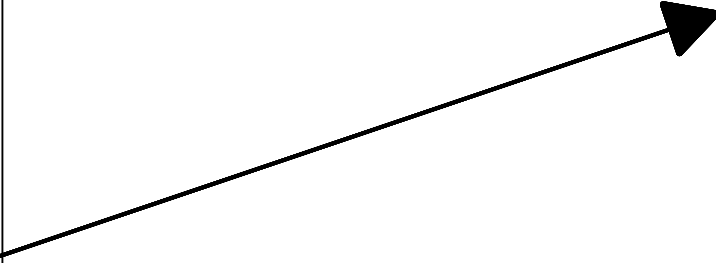
2

8

1e

2g

1f



CONTRONO BUSTO	1120cm	1/4"	47
	1132cm	1/2"	44
TOUR DE EPAILLE	1096cm	1/2"	46
	1084cm	1/2"	44
FINISHED BUST SIZE	1072cm	3/8"	42
	960cm	1/2"	38
	952cm	1/2"	40
	966cm	1/2"	42

GATHER
FRONCE
FRONCE

36

36

38

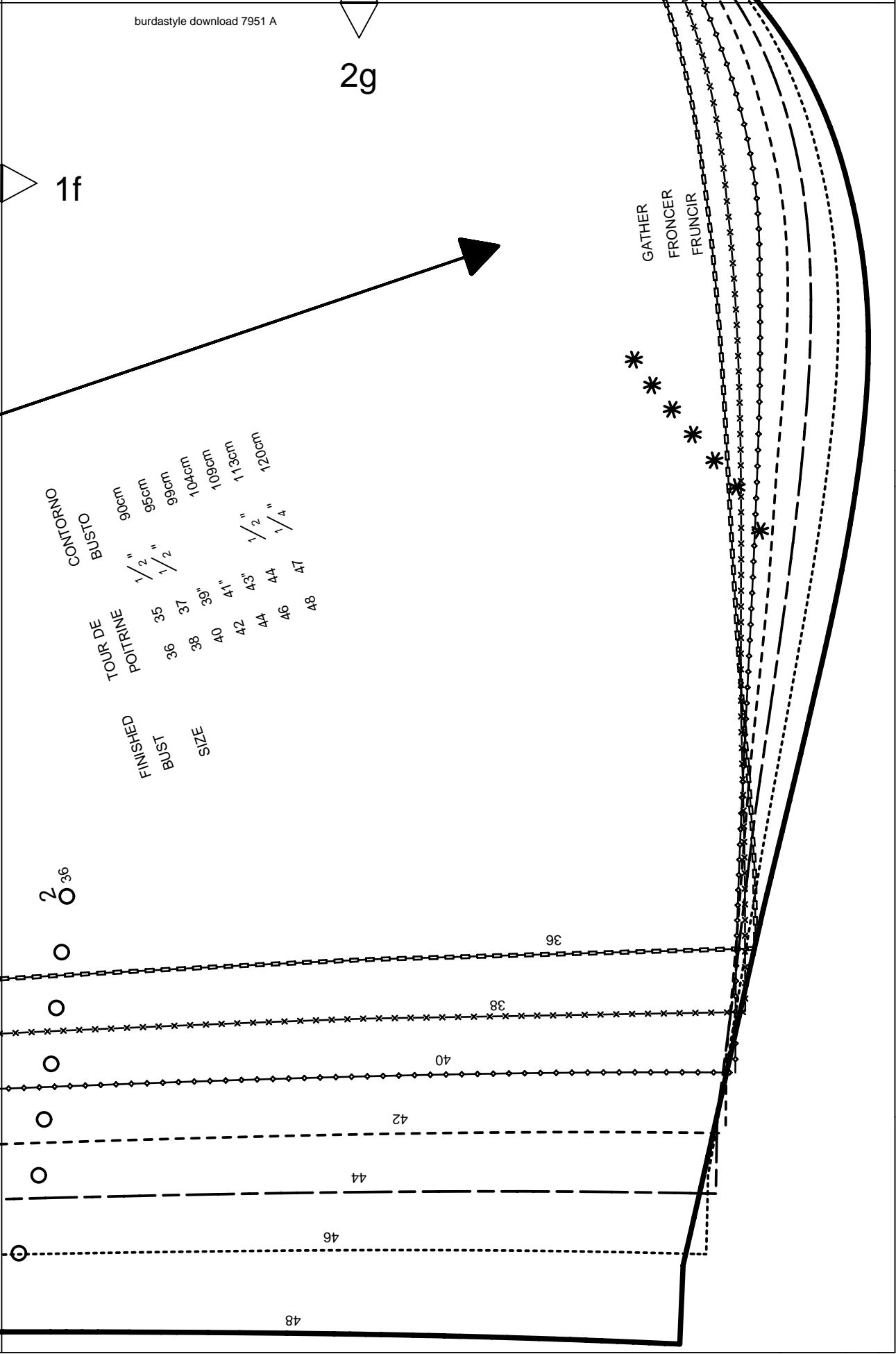
40

42

44

46

48

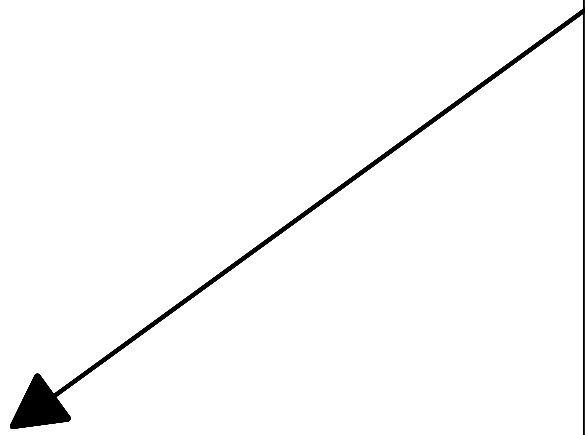
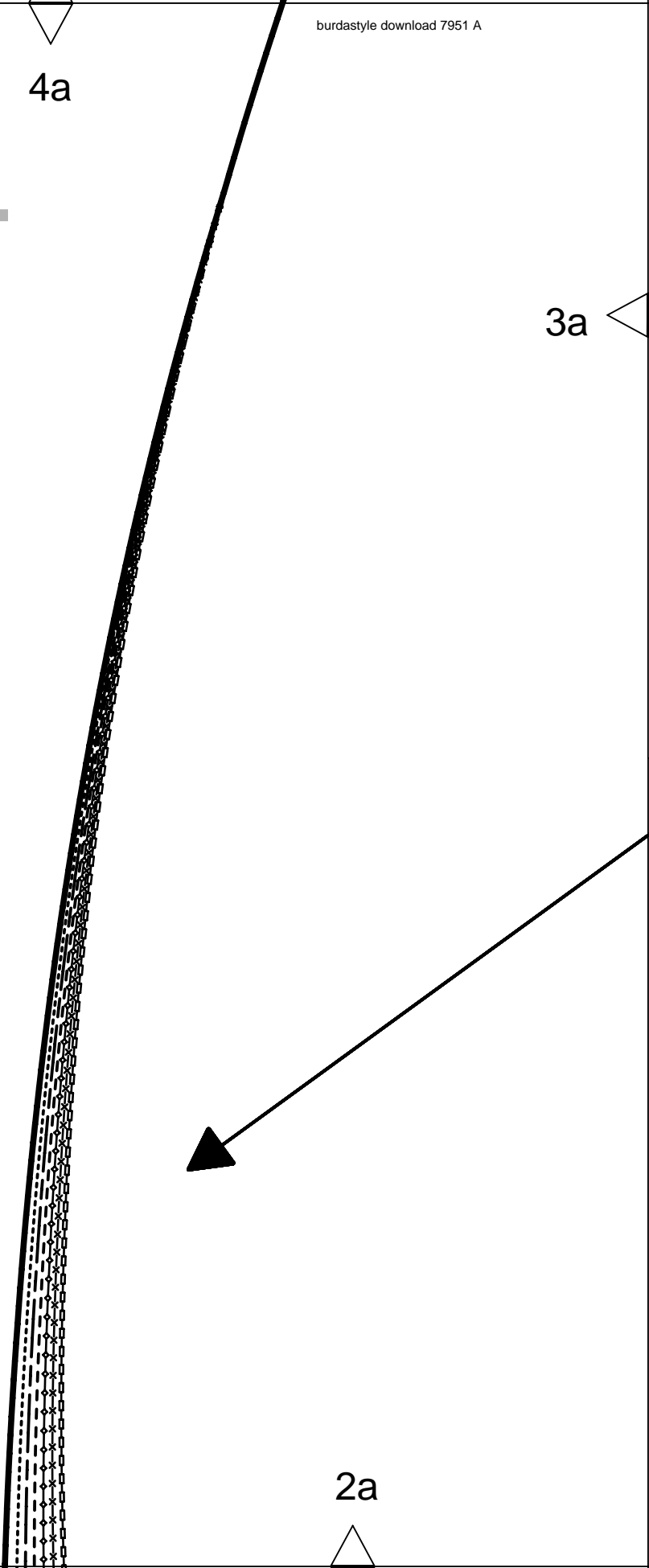


4a

Burda STYLE

www.burdastyle.com

3a



2a



4b

3a

STRAIGHT GRAIN
DROIT FIL
SENTIDO HILO



2 x

5/8" (1.5cm)

BACK SKIRT PANEL
DOS DE JUPE
FALDA POST.

6

FABRIC
TISSU
TELA



LINING
DOUBLURE
FORRO

SEAM ALLOWANCE INCLUDED
AVEC VALEUR DE COUTURE
CON MARGEN DE COSTURA
7951

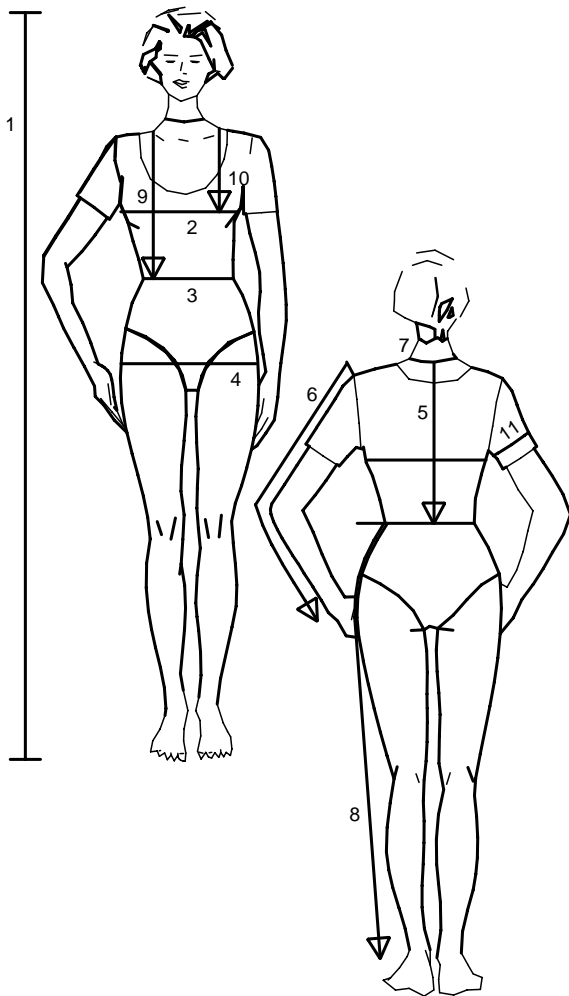
Burda
STYLE
www.burdastyle.com

2b

3b

4c

Size Taille Talla		32	34	36	38	40	42	44	46	48	50	52	54	56	58	60
1	inches	66 1/4	66 1/4	66 1/4	66 1/4	66 1/4	66 1/4	66 1/4	66 1/4	66 1/4	66 1/4	66 1/4	66 1/4	66 1/4	66 1/4	66 1/4
	cm	168	168	168	168	168	168	168	168	168	168	168	168	168	168	168
2	inches	30	31 1/2	33	34 3/4	36 1/4	37 3/4	39 1/2	41	43 1/2	45 1/2	48	50 1/2	52 3/4	55 1/4	57 1/2
	cm	76	80	84	88	92	96	100	104	110	116	122	128	134	140	146
3	inches	23	24 1/2	26	27 3/4	29 1/4	30 3/4	32 1/2	34	36 1/4	38 3/4	41	43 1/2	45 1/2	48	50 1/2
	cm	58	62	66	70	74	78	82	86	92	98	104	110	116	122	128
4	inches	32 1/2	34	35 1/2	37	38 3/4	40 1/4	41 3/4	43 1/2	45 1/2	48	50 1/2	52 3/4	55 1/4	57 1/2	60
	cm	82	86	90	94	98	102	106	110	116	122	128	134	140	146	152
5	inches	15 3/4	16	16 1/4	16 1/2	16 1/2	16 3/4	17	17 1/4	17 1/4	17 1/2	17 3/4	18	18 1/4	18 1/2	18 1/2
	cm	40	40,5	41	41,5	42	42,5	43	43,5	44	44,5	45	45,5	46	46,5	47
6	inches	23 1/4	23 1/4	23 1/4	23 3/4	23 3/4	24	24	24	24	24 1/2	24 1/2	24 1/2	24 3/4	24 3/4	24 3/4
	cm	59	59	59	60	60	61	61	61	61	62	62	62	63	63	63
7	inches	13	13 1/2	14 1/4	14 1/2	14 3/4	15	15 1/2	15 3/4	16 1/4	16 1/2	17	17 1/4	17 3/4	18 1/4	18 1/2
	cm	33	34	35	36	37	38	39	40	41	42	43	44	45	46	47
8	inches	39 3/4	40 1/4	40 1/4	40 3/4	41	41	41 1/2	41 1/2	41 1/2	41 3/4	41 3/4	41 3/4	42 1/4	42 1/2	42 1/2
	cm	101	102	102	103	104	104	105	105	105	106	106	106	107	108	108
9	inches	16 1/2	17	17 1/4	17 3/4	18 1/4	18 1/2	19	19 1/4	19 3/4	20 1/4	20 1/2	21	21 1/4	21 3/4	22 1/4
	cm	42	43	44	45	46	47	48	49	50	51	52	53	54	55	56
10	inches	9 1/2	9 7/8	10 1/4	10 3/4	11 1/8	11 1/2	11 7/8	12 1/4	12 3/4	13	13 1/2	14 1/4	14 1/2	14 3/4	15
	cm	24	25	26	27	28	29	30	31	32	33	34	35	36	37	38
11	inches	9 7/8	10 1/4	10 3/4	11 1/8	11 1/2	11 7/8	12 1/4	12 3/4	13 1/2	14 1/2	15	15 3/4	16 1/2	17 1/4	18 1/4
	cm	25	26	27	28	29	30	31	32	34	36	38	40	42	44	46



english
 1. Height
 2. Bust
 3. Waist
 4. Hip
 5. Back length
 6. Sleeve length
 7. Neck width
 8. Side leg length
 9. Front waist length
 10. Bust point
 11. Upper arm circumf.

For dresses, blouses, coats and jackets select size according to bust measurement, for trousers and skirts according to hip measurement!
 All burda patterns are prepared with ease allowance appropriate for style in question.

français
 1. Stature
 2. Tour de poitrine
 3. Tour de taille
 4. Tour des hanches
 5. Long. du dos
 6. Longueur de manche
 7. Tour de cou
 8. Long. côté pantalon
 9. Long. taille devant
 10. Profondeur de poitrine
 11. Tour du bras

Robes, corsages, manteaux et vestes seront choisis d'après votre tour de poitrine les pantalons et les jupes d'après votre tour de hanches!
 Tous les patrons sont établis avec l'aisance nécessaire selon le genre du modèle.

español
 1. Estatura
 2. Contorno busto
 3. Contorno cintura
 4. Contorno cadera
 5. Largo espalda
 6. Largo manga
 7. Contorno cuello
 8. Largo lateral del pantalón
 9. Largo talle delantero
 10. Altura de pecho
 11. Cont. de brazo

La talla para los vestidos, blusas, abrigos y chaquetas, se determina de acuerdo con el contorno del busto. Los pantalones y las faldas, de acuerdo con el contorno de las caderas.
 En el patrón-Burda se incluyen los márgenes para la holgura necesaria.

4d



CENTER FRONT FOLD, STRAIGHT GRAIN
MILIEU DEVANT PLIURE, DROIT FIL
MEDIO DELANTERO DOBLEZ SENT.HILO

36

48

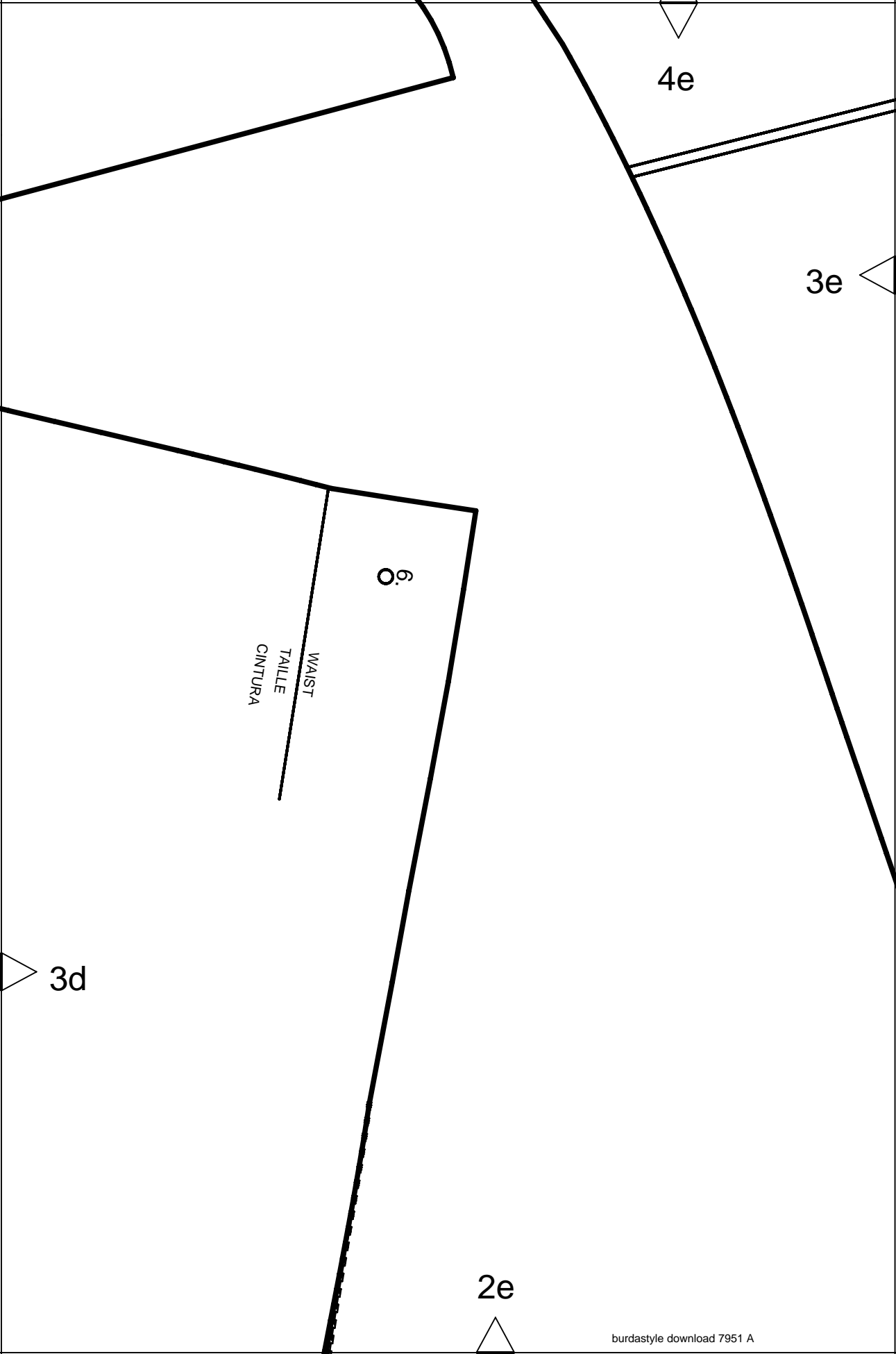
ZIPPER
FERMETURE A GLISSIERE
CREMALLERA

LENGTHEN OR SHORTEN HERE
RALLONGER OU RACCOURCIR ICI
ALARGAR O ACORTAR AQUI

3d

2d

3c



4e

3e

6.9

WAIST
TAILLE
CINTURA

3d

2e

RALLONGER OU RACCOURCIR ICI
 ALARGAR O ACORTAR AQUI
 LENGTHEN OR SHORTEN HERE

4f

3e

3f

MEASUREMENTS	FINISHED	SIZE
TOUR DE HANCHES	36	36
	40	38
	41	40
	43	42
	45	44
	47	46
	49	48
CADERA	102cm	1/4"
	106cm	3/4"
	110cm	1/2"
	114cm	3/4"
	116cm	1/4"
	120cm	3/4"
	126cm	1/4"

WAIST
 TAILLE
 CINTURA



2f

4g

3f

4
36

SEAM
COUTURE
COSTURA
CENTER FRONT
MILIEU DEVANT
CENTRO DELANTERO

2g



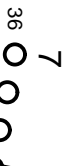
6a



STRAIGHT GRAIN
DROIT FIL
SENTIDO HILO



∞



36

38

40

42

44

46

48

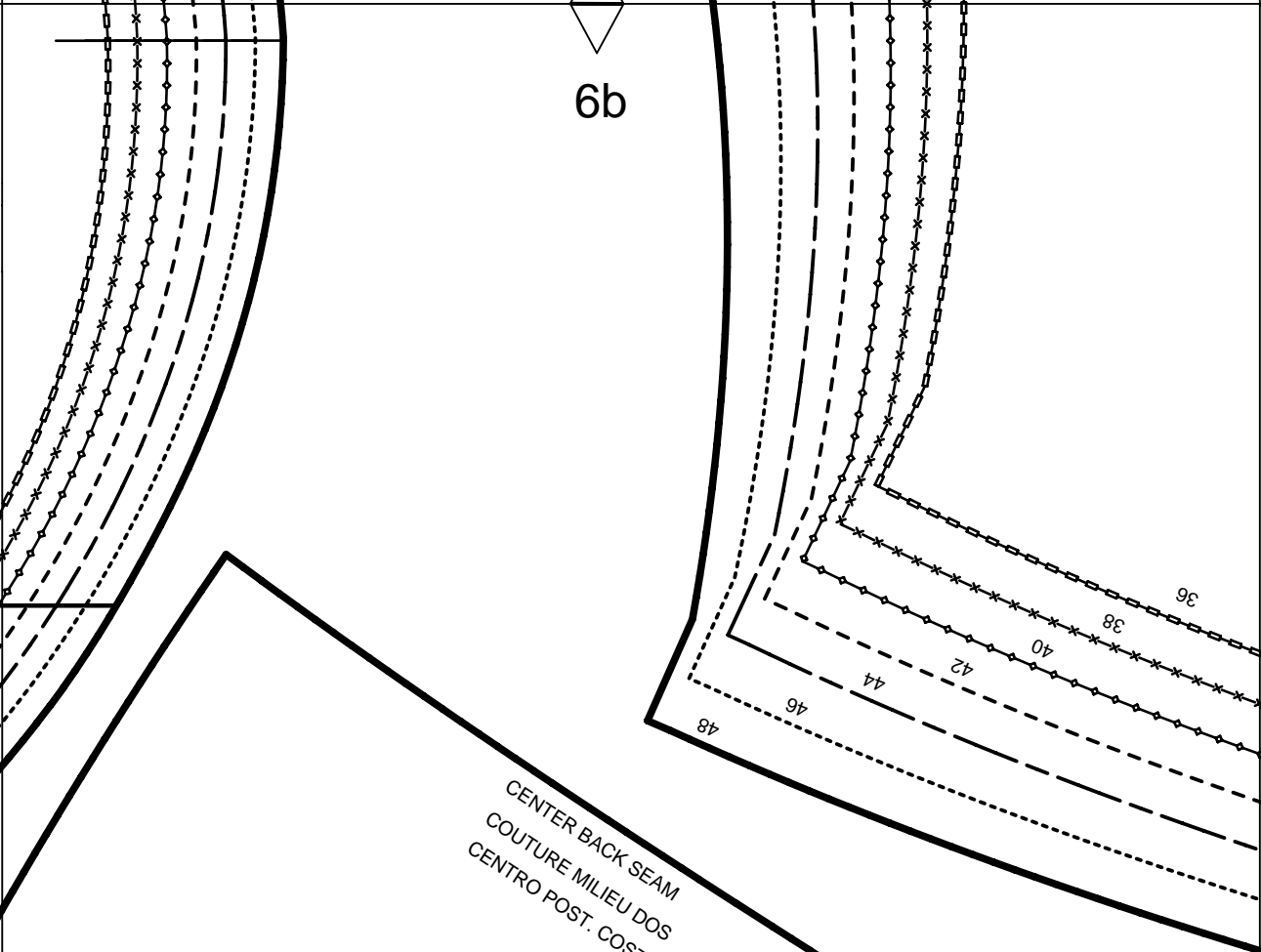


5a

4a

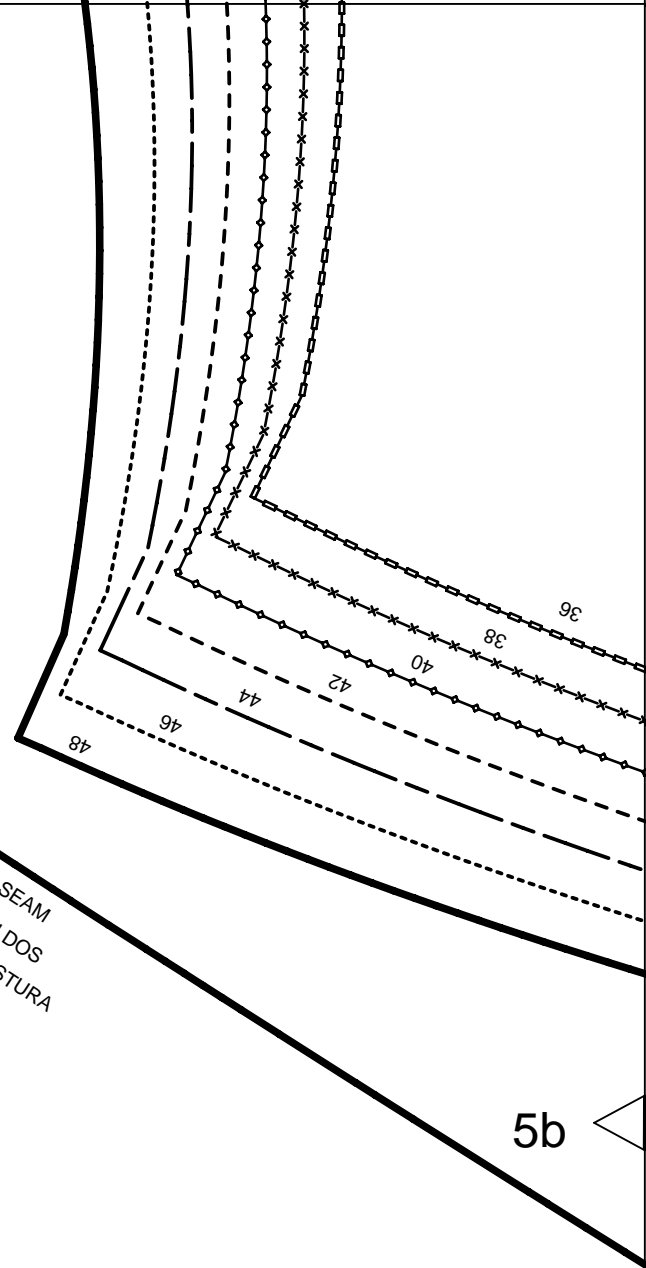


6b



CENTER BACK SEAM
COUTURE MILIEU DOS
CENTRO POST. COSTURA

5b



4b



5a



CENTER BACK ZIPPER
MILIEU DOS, FERM. A GLISS.
MEDIO POST. CREMALLERA

6c

EASE-IN
SOUTENIR
EMBEER

36
↓

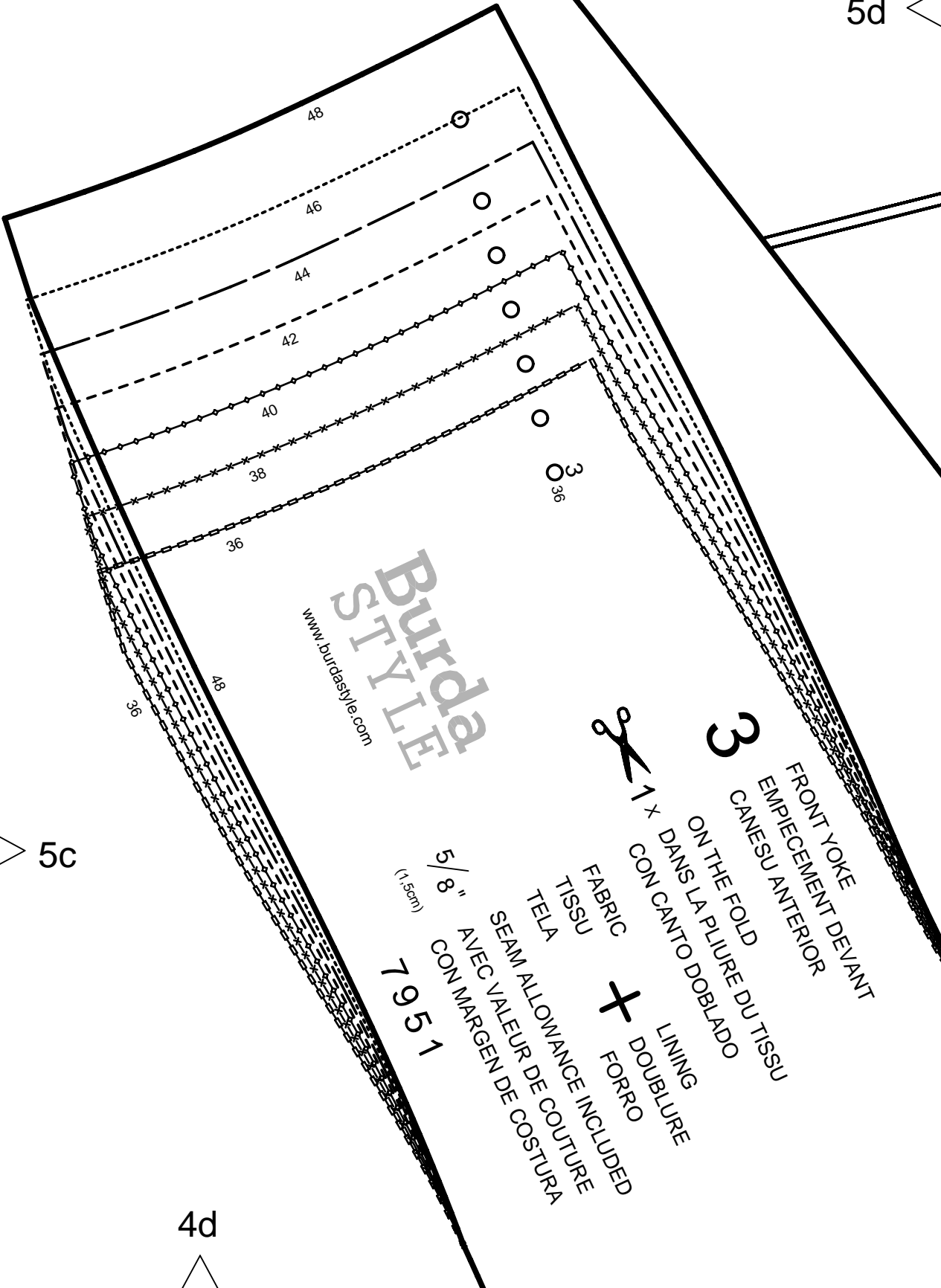
5b

5c

4c

6d

5d



Burdastyle
www.burdastyle.com



3

FRONT YOKE
EMPIECEMENT DEVANT
CANESU ANTERIOR

ON THE FOLD
DANS LA PLIURE DU TISSU
CON CANTO DOBLADO

FABRIC TISSU
TELA
SEAM ALLOWANCE INCLUDED
AVEC VALEUR DE COUTURE
CON MARGEN DE COSTURA

+ LINING DOUBLURE
FORRO

$\frac{5}{8}$ "
(1.5cm)

7951

5c

4d

6e

5d

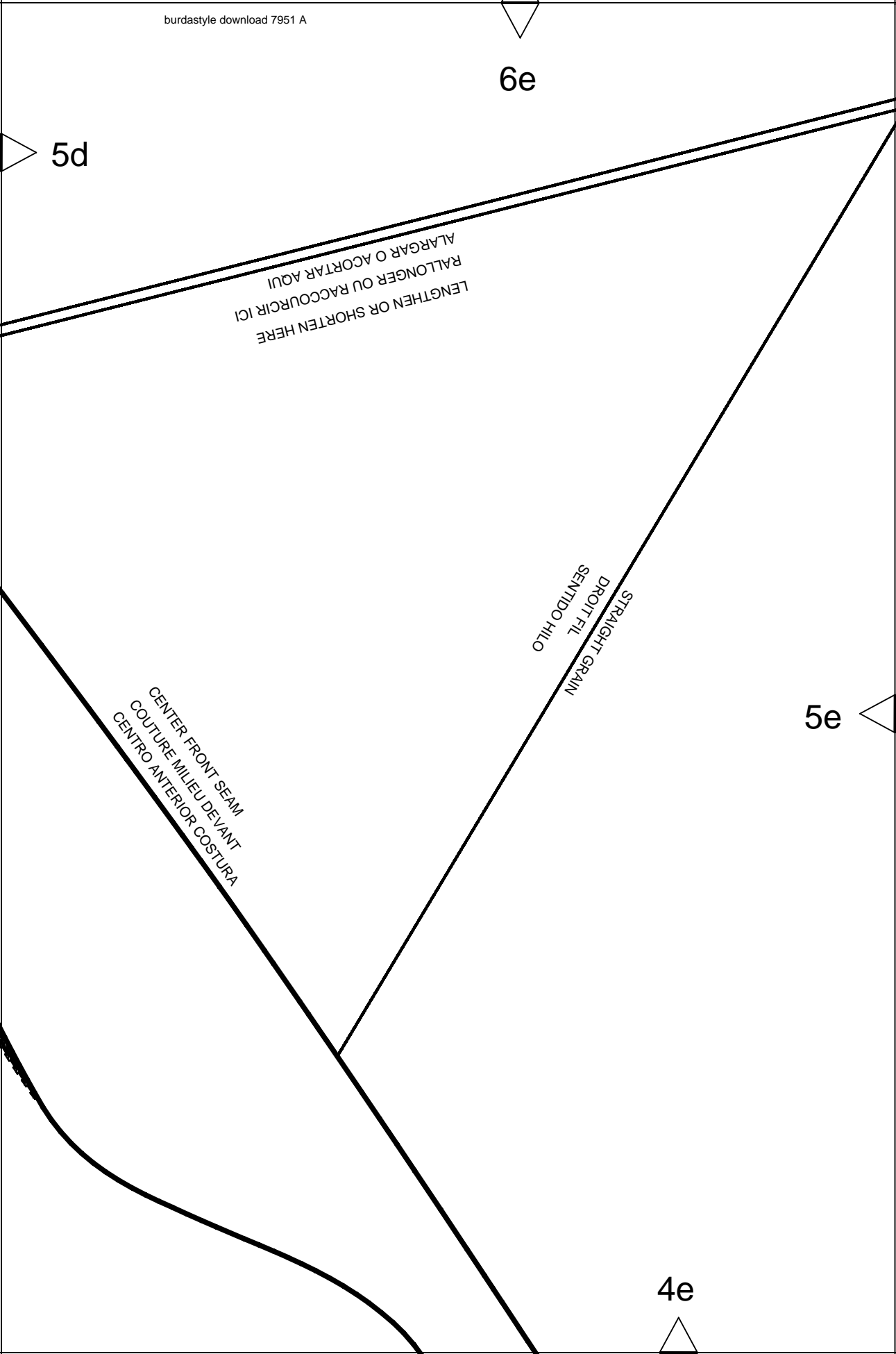
ALARGAR O ACORTAR AQUI
RALLONGER OU RACCOURCIR ICI
LENGTHEN OR SHORTEN HERE

STRAIGHT GRAIN
DROIT FIL
SENTIDO HILO

CENTER FRONT SEAM
COUTURE MILIEU DEVANT
CENTRO ANTERIOR COSTURA

5e

4e



KEY TO SYMBOLS
 LEGENDE
 INTERPRETACION DE LOS SIMBOLOS



SYMBOL FOR STITCHING LINES
 REMARQUE CONCERNANT LES LIGNES DE FIGURES
 INDICACION PARA LINEAS DE PESPUNTE



SEAM ATTACHMENT POINT
 POINT DE RACCORD DE LA COUTURE
 PUNTO DE AJUSTE DE LA COSTURA



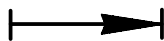
SEAM NUMBERS ARE MATCHING SYMBOLS AND DENOTE
 WHERE TWO PIECES SHOULD BE SEWN TOGETHER.
 LES CHIFFRES-REPERES INDIQUENT OU ASSEMBLER LES PIECES.
 LES CHIFFRES IDENTIQUES COINCIDENT.
 LOS NUMEROS DE COSTURA INDICAN DONDE LAS PIEZAS.
 LOS MISMOS NUMEROS CONCIDEN.



GATHER BETWEEN THE STARS.
 FRONCER ENTRE LES ASTERISQUES.
 EMBEBER ENTRE LAS ESTRELLAS.



EASE IN BETWEEN THE DOTS.
 SOUTENIR ENTRE LES POINTS.
 EMBEBER ENTRE LOS PUNTOS.



POSITION PLEATS IN DIRECTION OF ARROW.
 POSER LES PLIS DANS LE SENS DES FLECHES.
 PONER LOS PLIEQUES SEGUN LA FLECHA.



SYMBOL INDICATING THE BEGINNING OR END OF VENT.
 REPERE DE DEBUT OU DE FIN DE FENTE.
 MARCA PARA EL PRINCIPIO O FINAL DE LA ABERTURA.



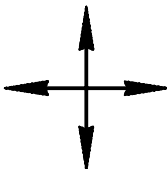
SLASH
 FENTE
 CORTE



BUTTONHOLE
 BOUTONNIERE
 OIAL



BUTTON OR SNAP
 BOUTON OU BOUTON-PRESSION
 BOTON O BROCHE DE PRESION

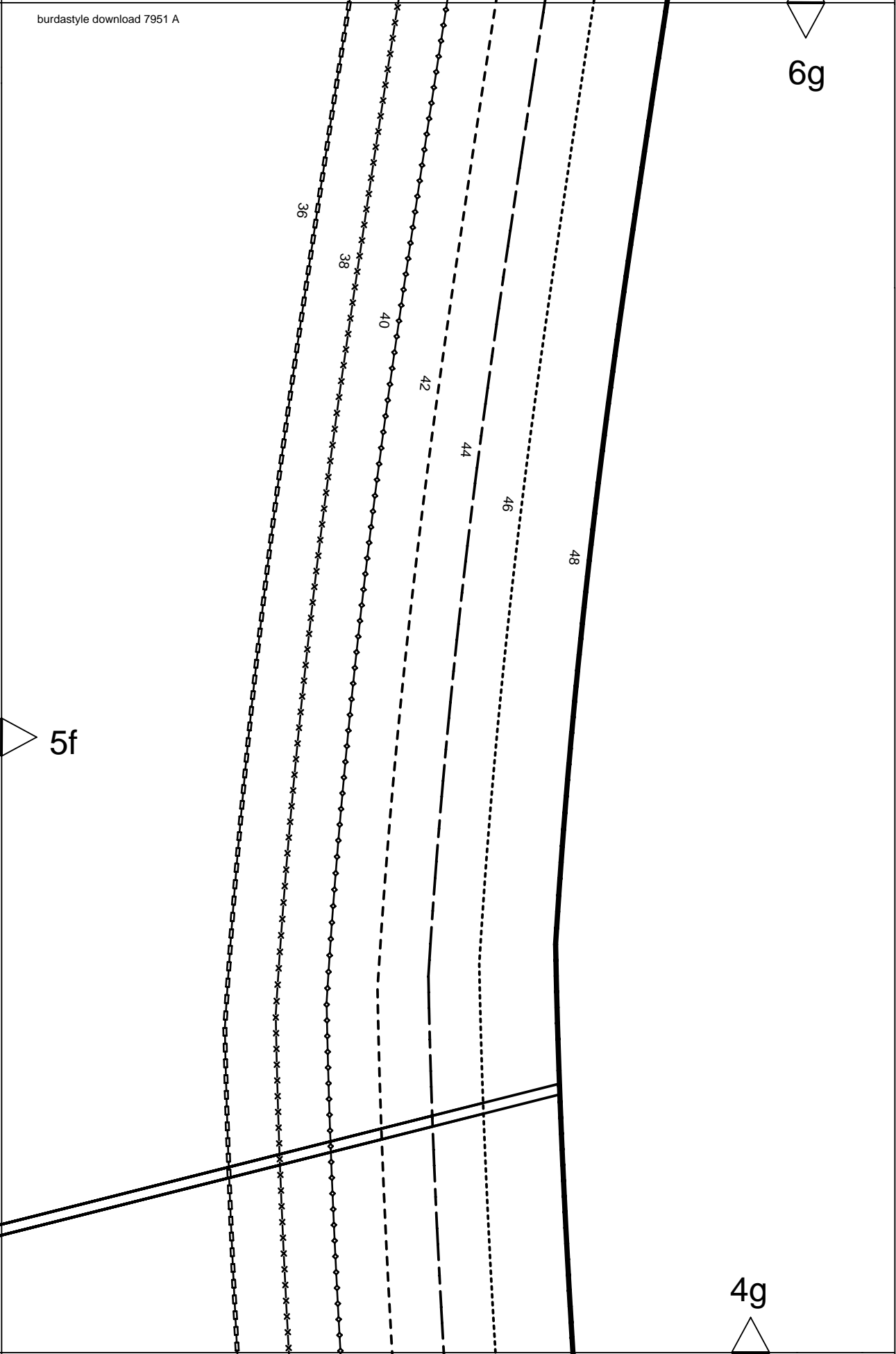


SEE CUTTING DIAGRAMS FOR STRAIGHT GRAIN OF FABRIC
 SENS DU DROIT-FIL VOIR LES PLANS DE COUPE
 DIRECCION DEL HILO, VEANSE PLANOS DE CORTE

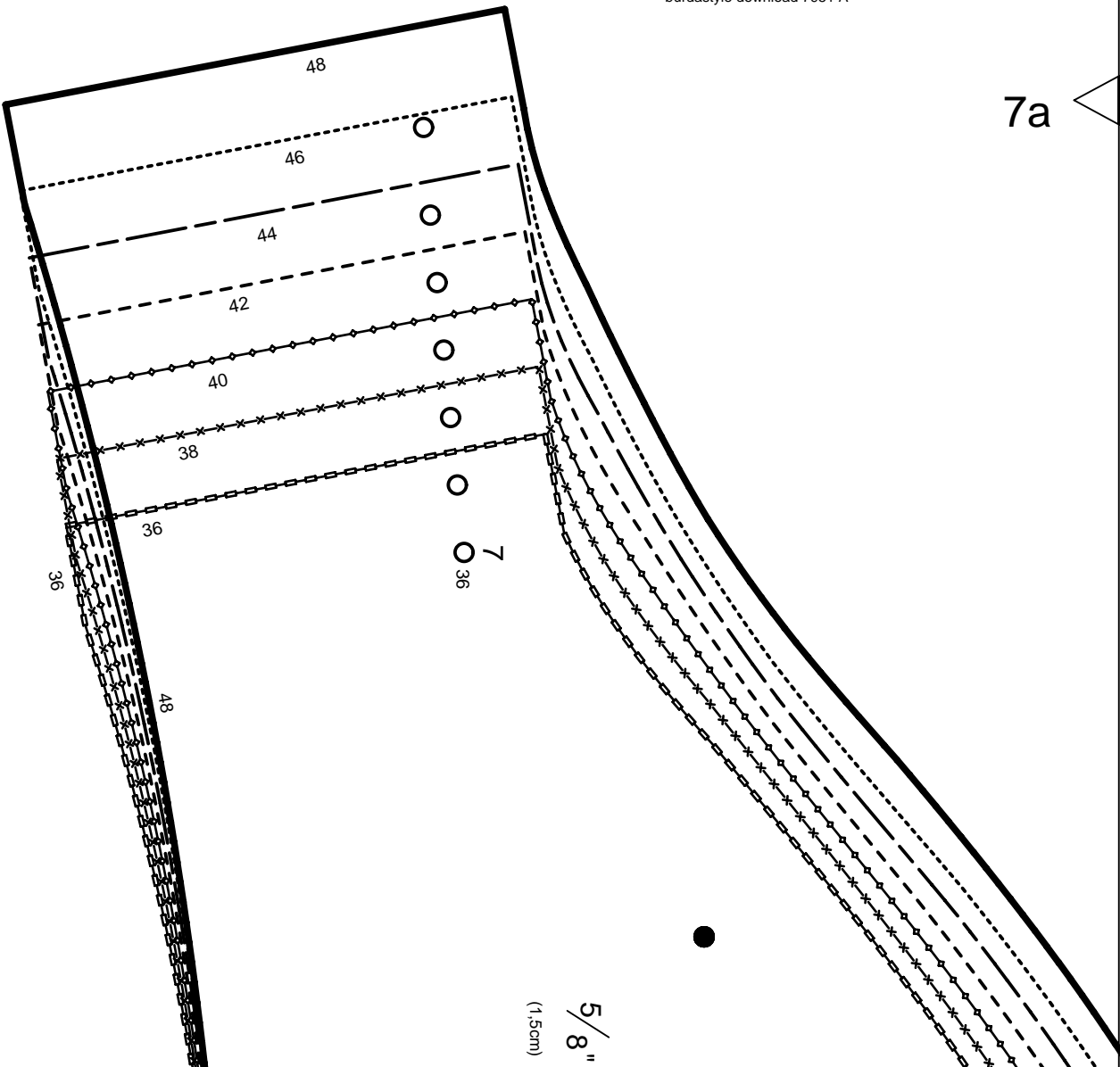
5e

5f

4f



7a



EASE-IN
SOUTENIR
EMBEER

7

SLEEVE
MANCHE
MANGA



5/8" (1.5cm)

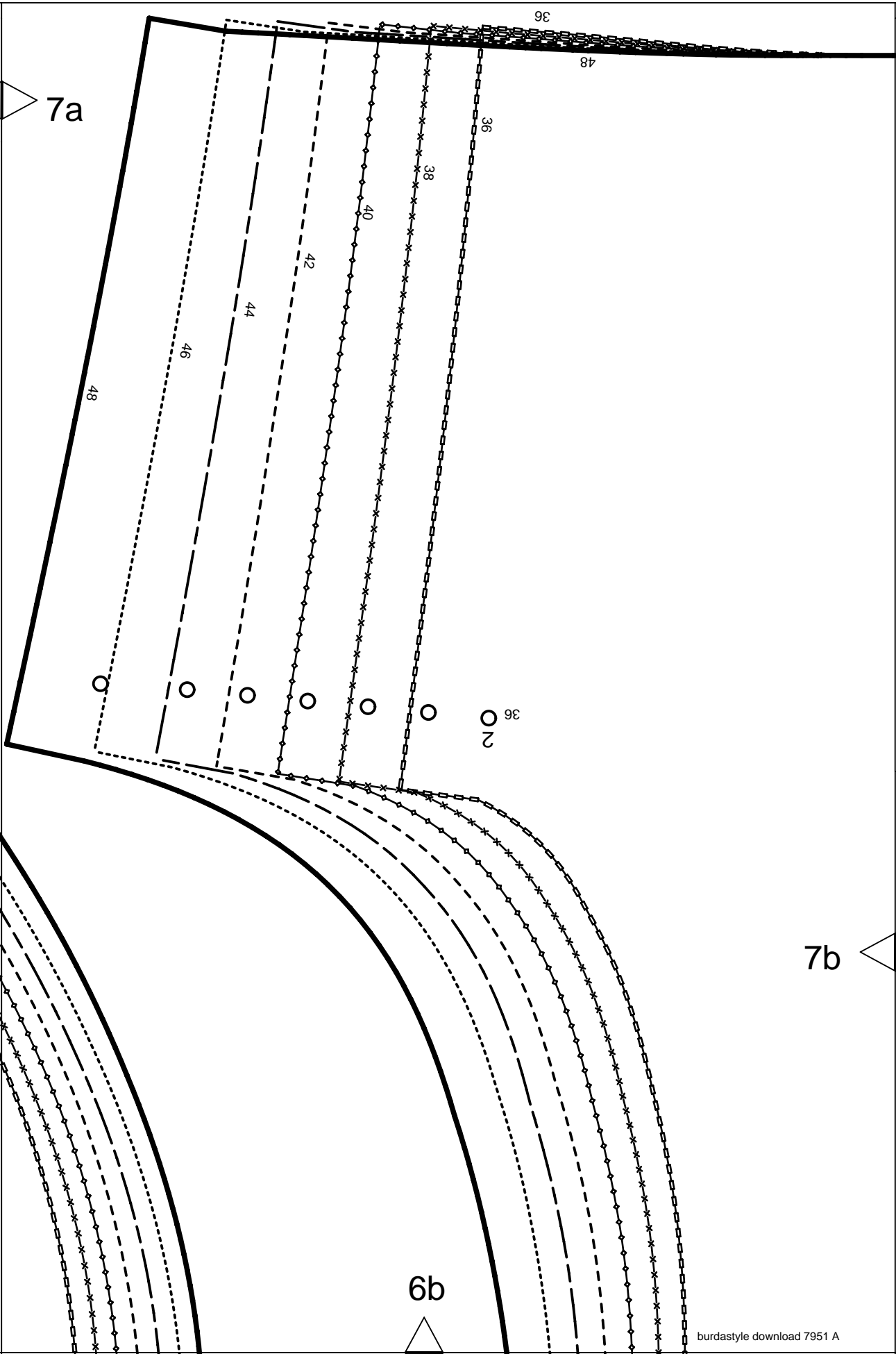
SEAM ALLOWANCE INCLUDED
AVEC VALEUR DE COUTURE
CON MARGEN DE COSTURA

7951

Burda
STYLE

www.burdastyle.com

6a



7a

7b

6b

05

www.burdastyle.com

Burda
STYLE

7951

SEAM ALLOWANCE INCLUDED
AVEC VALEUR DE COUTURE
CON MARGEN DE COSTURA
(1.5cm)

5/8"

FABRIC
TISSU
TELTA
LINING
DOUBLURE
FORRO



2 x

BACK
DOS
ESPALDA

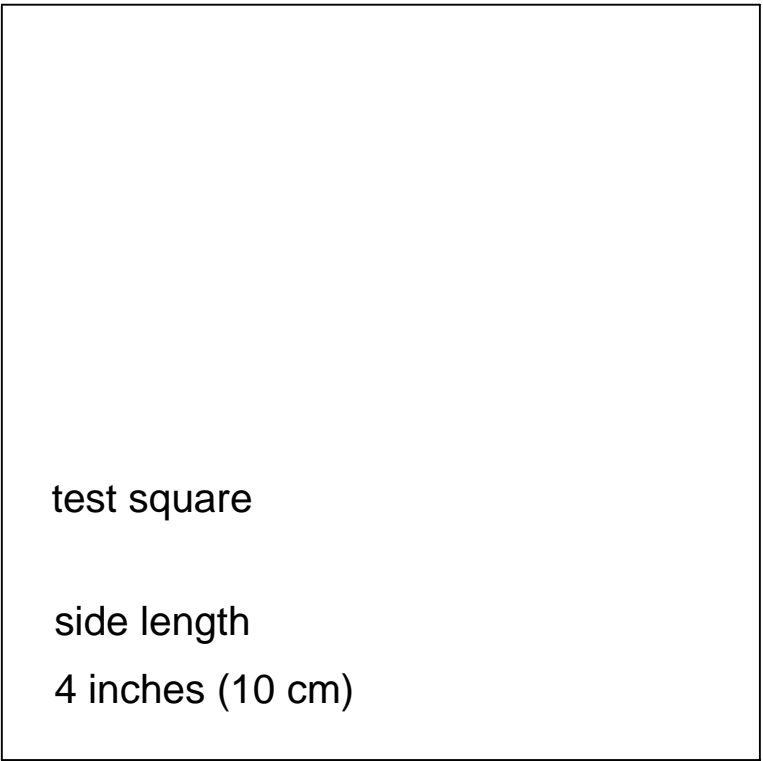
2

STRAIGHT GRAIN
DROIT FIL
SENTIDO HILO

7c

7b

6c



test square

side length

4 inches (10 cm)

7d

7c

6d

7d



Burda
STYLE
www.burdastyle.com

7951

SEAM ALLOWANCE INCLUDED
AVEC VALEUR DE COUTURE
CON MARGEN DE COSTURA
5/8" (1,5cm)

FORRO
DOUBLURE
LINING



FRONT SKIRT PANEL
FALDA ANTERIOR
DEVANT DE JUPE

FABRIC

TISSU

TELA

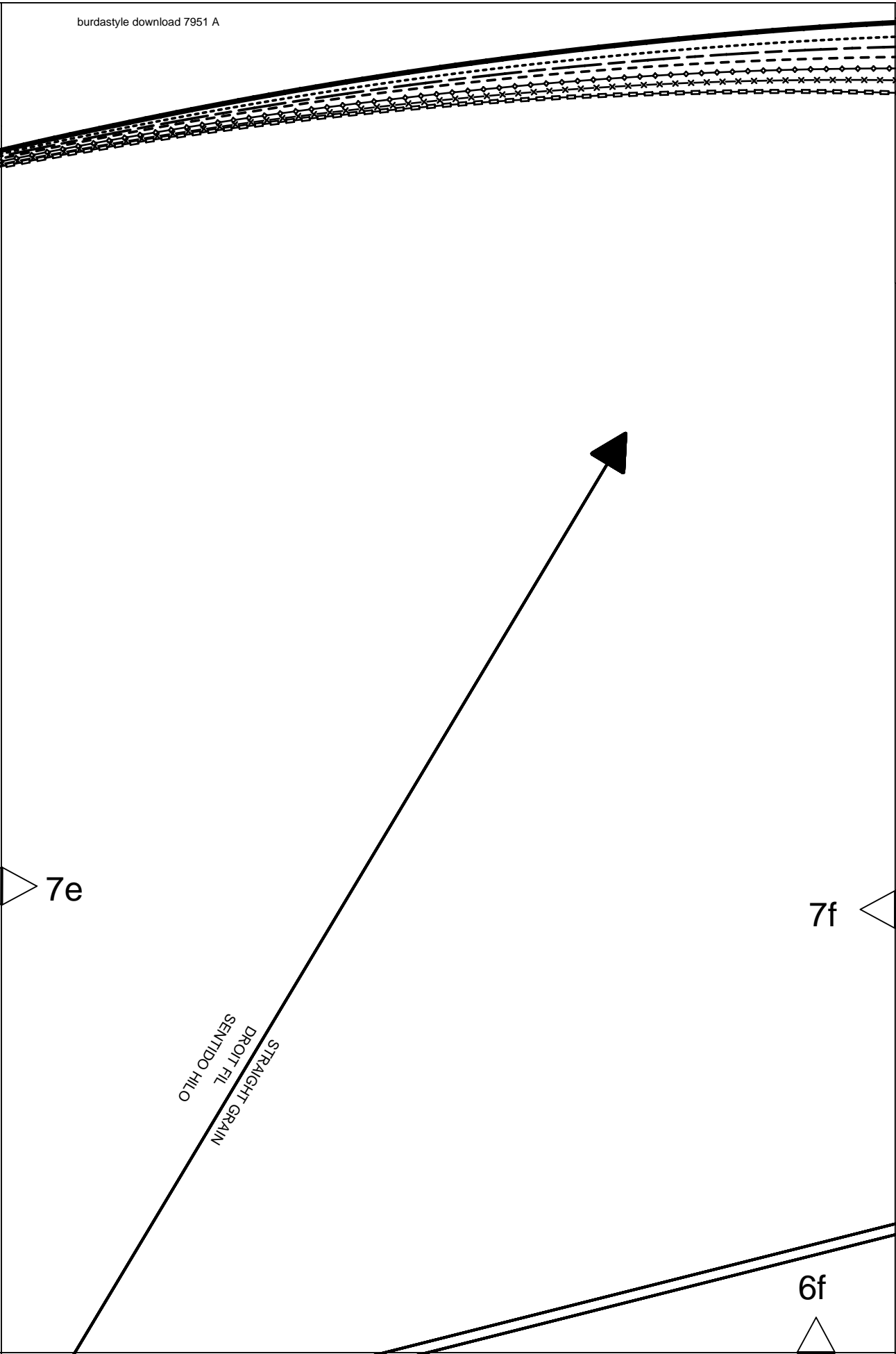
x 2



5

7e

6e

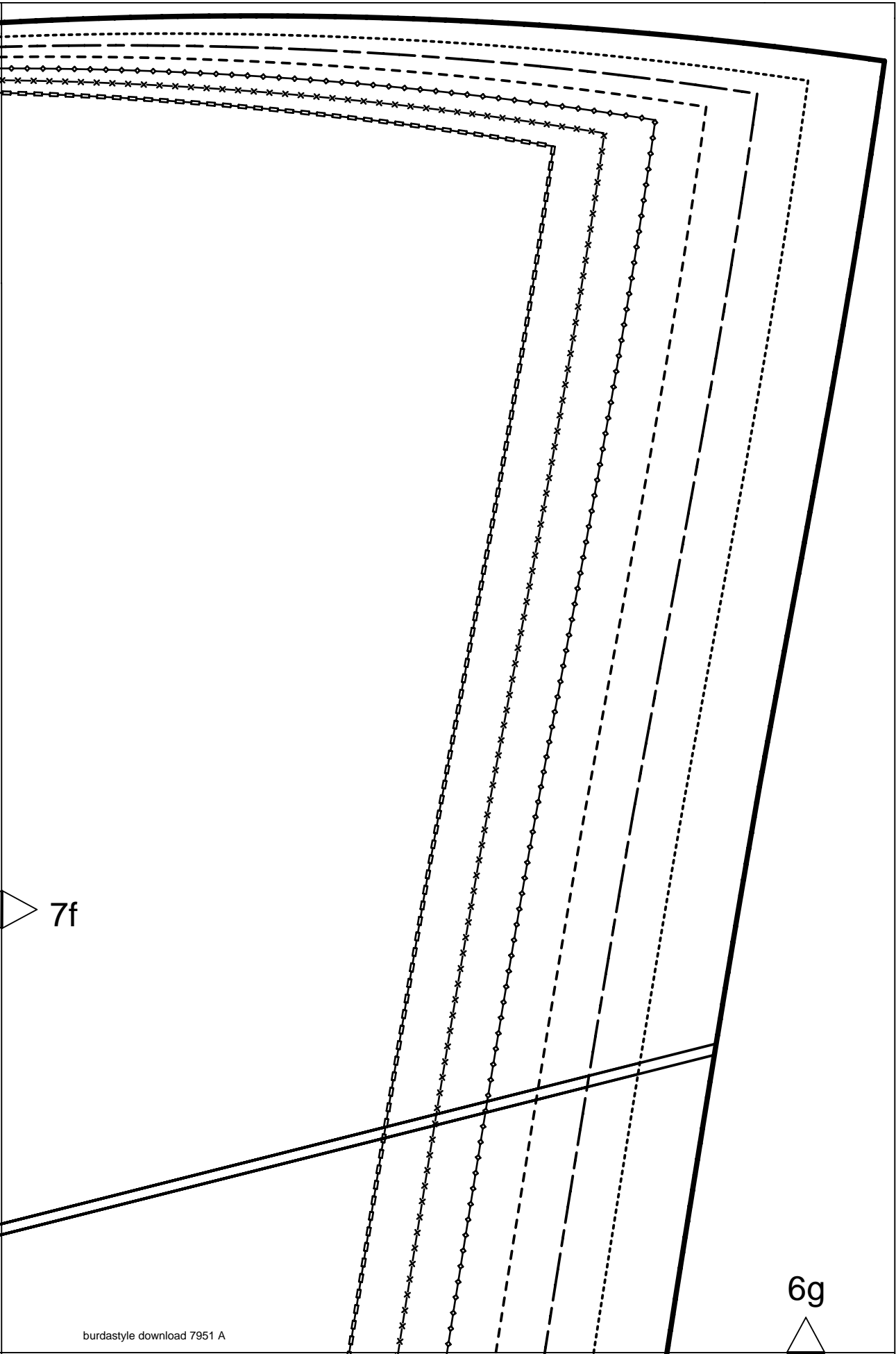


7e

7f

6f

STRAIGHT GRAIN
DROIT FIL
SENTIDO HILO

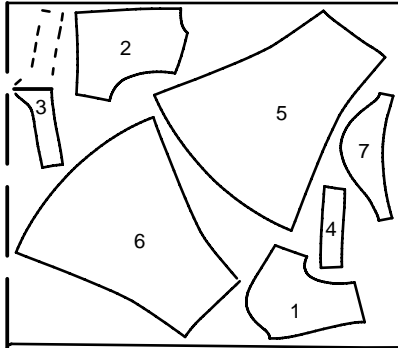


7f

6g

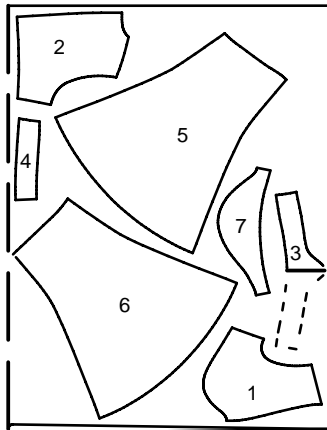
PATTERN LAYOUTS
PLANS DE COUPE
PLANOS DE CORTE

45" 114 CM



36-48

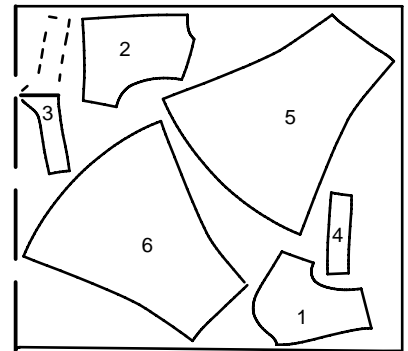
55" 140 CM



36-48

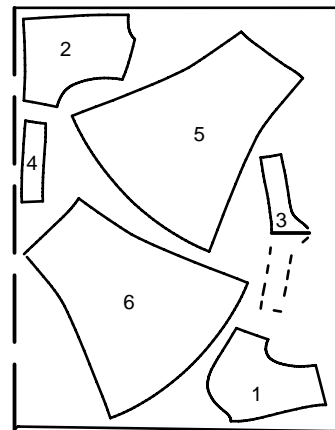
LINING
DOUBLURE
FORRO

45" 114 CM



36-48

55" 140 CM



36-48