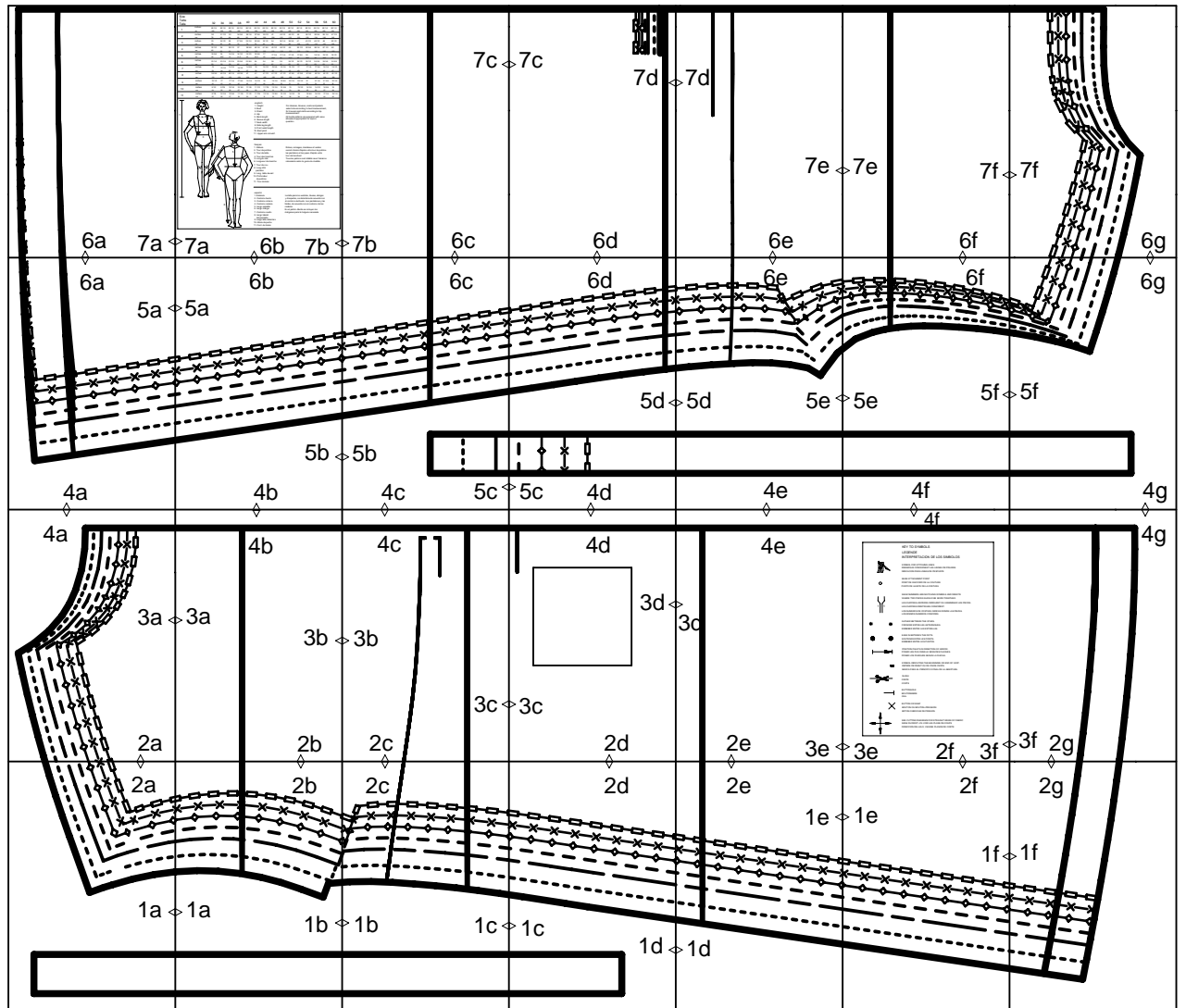
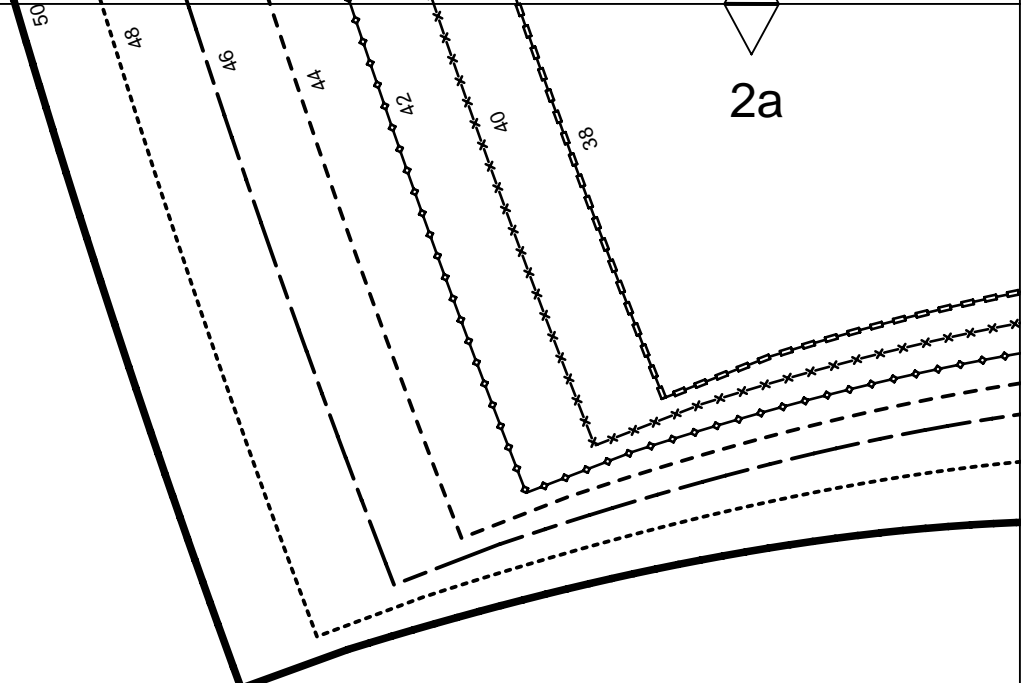


burdastyle download 7969 A

layout drawing





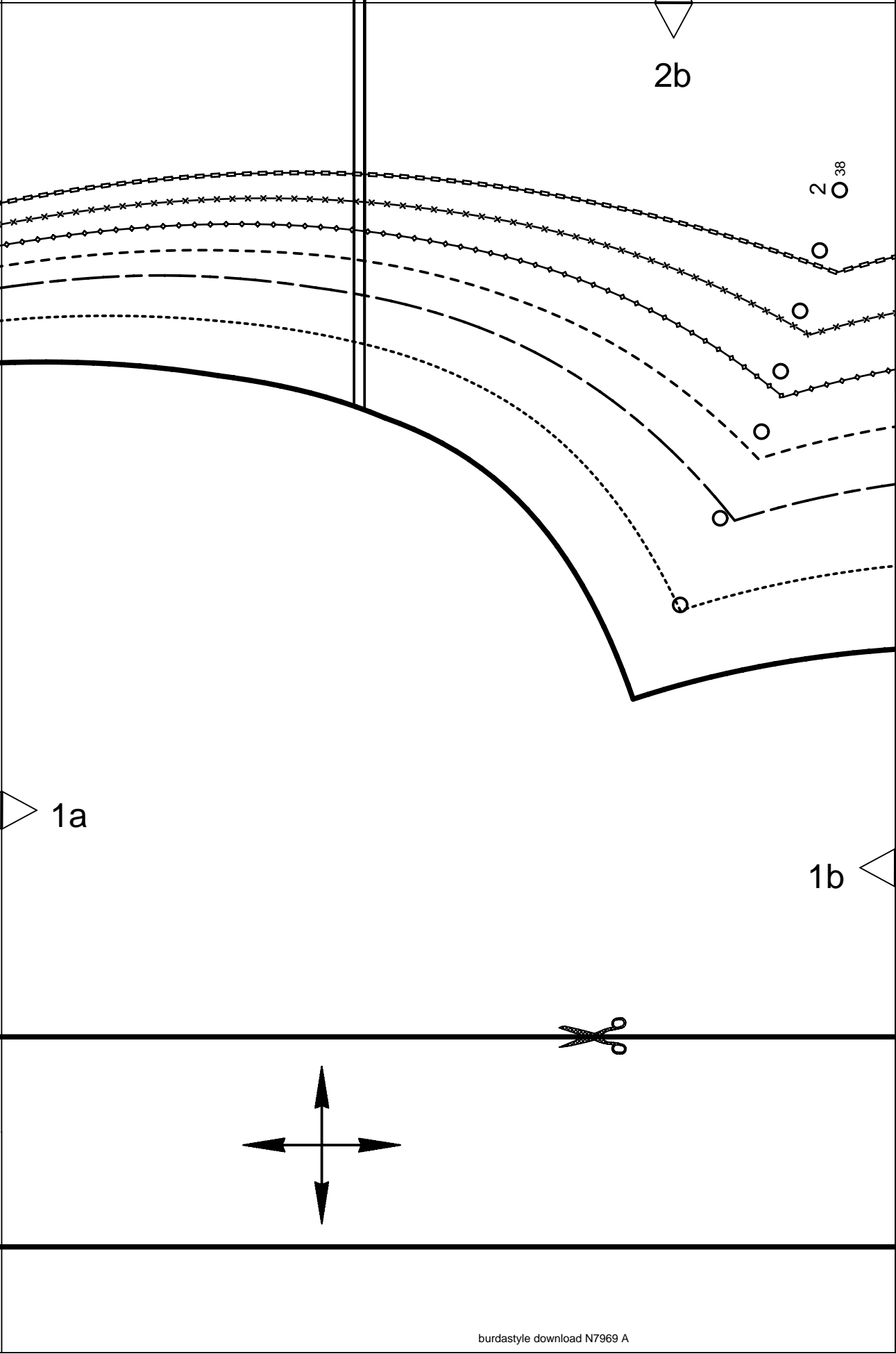
1a

1a

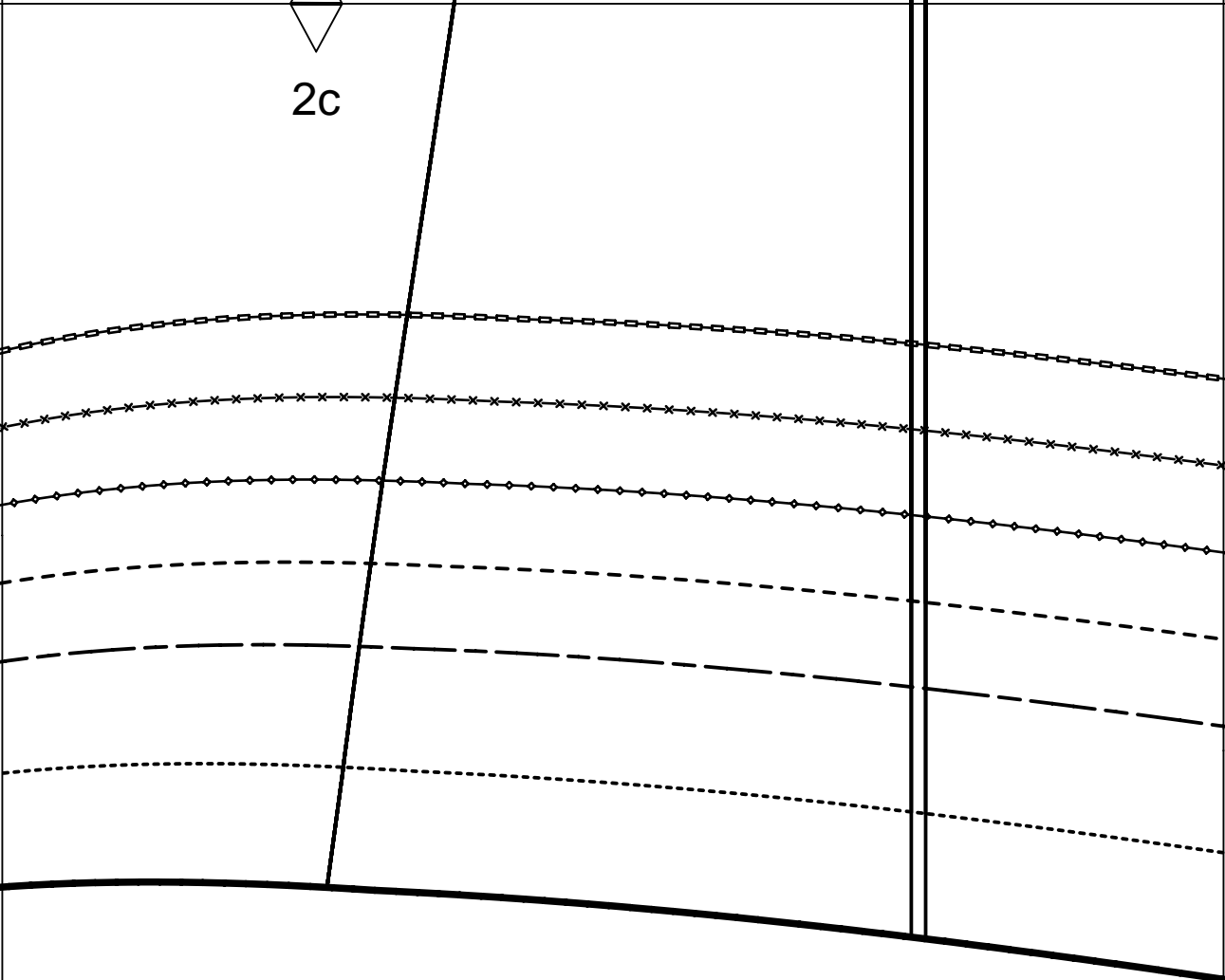
This text '1a' is located on the right side of the page, next to a small triangle pointing to the right.

Burda
STYLE

www.burdastyle.com



2c



1b

1c

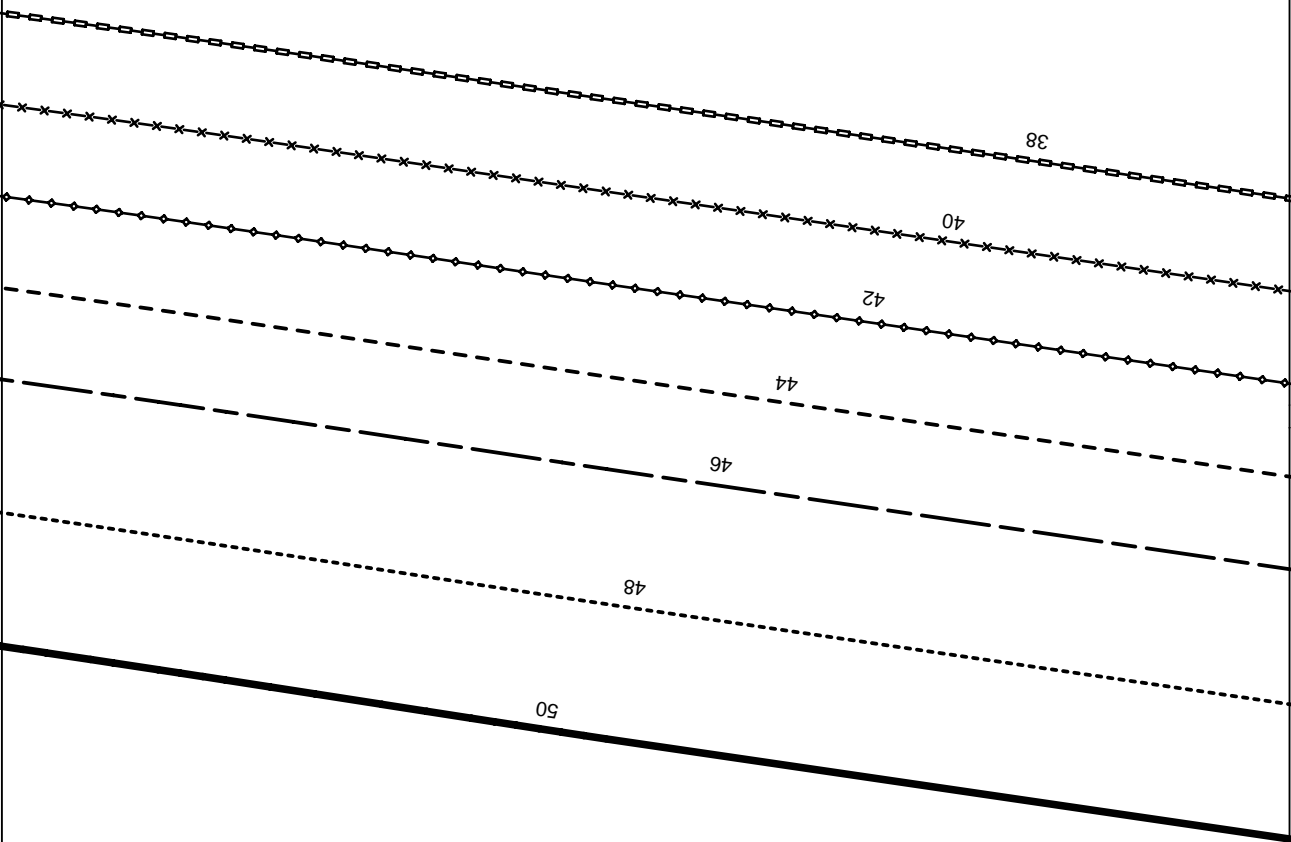
4

RIBBON
RUBAN
CINTA



7969 38-50

2d



1c

1d



2e

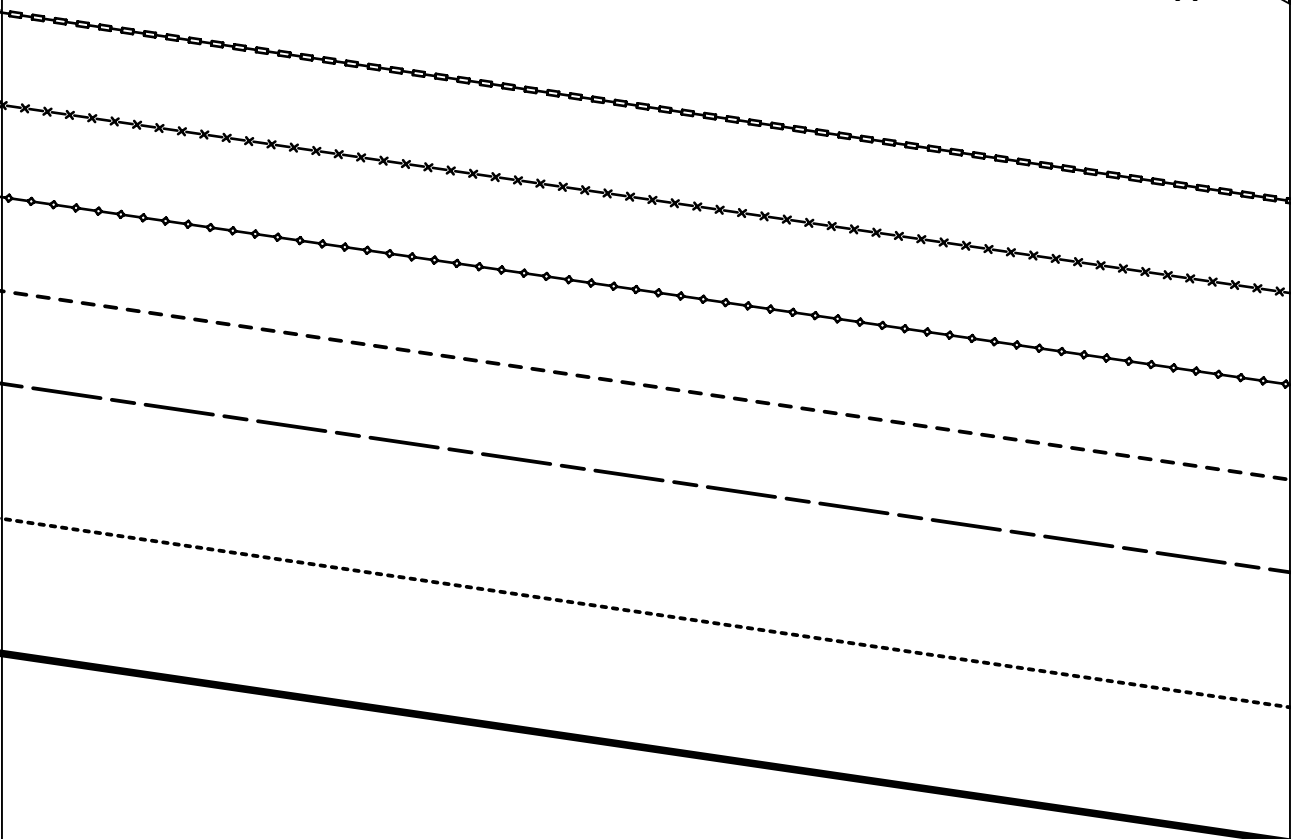
1e

1d

2f

1e

1f

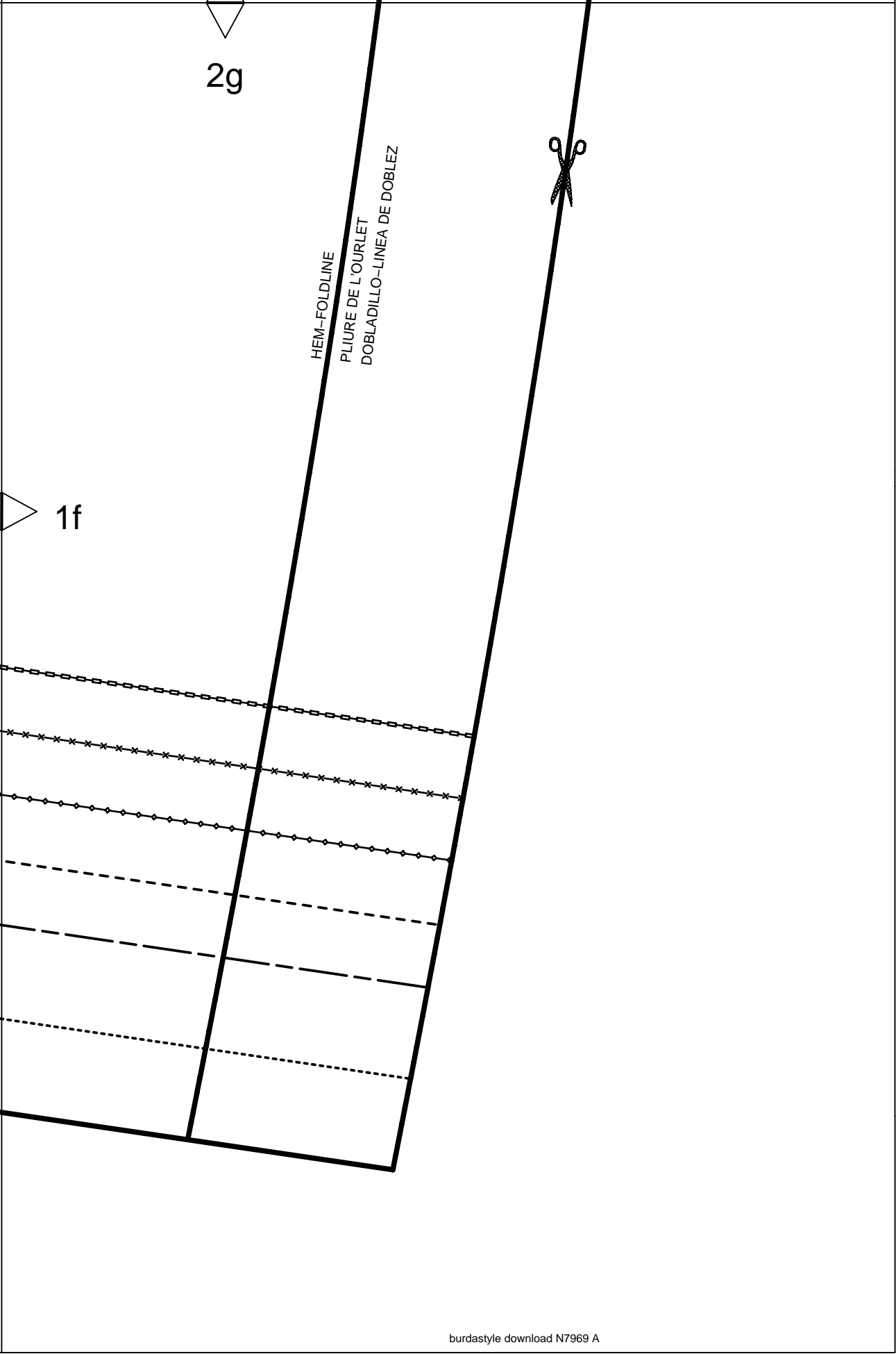


2g



HEM-FOLDLINE
PLIURE DE L'OURLET
DOBLADILLO-LINEA DE DOBLEZ

1f

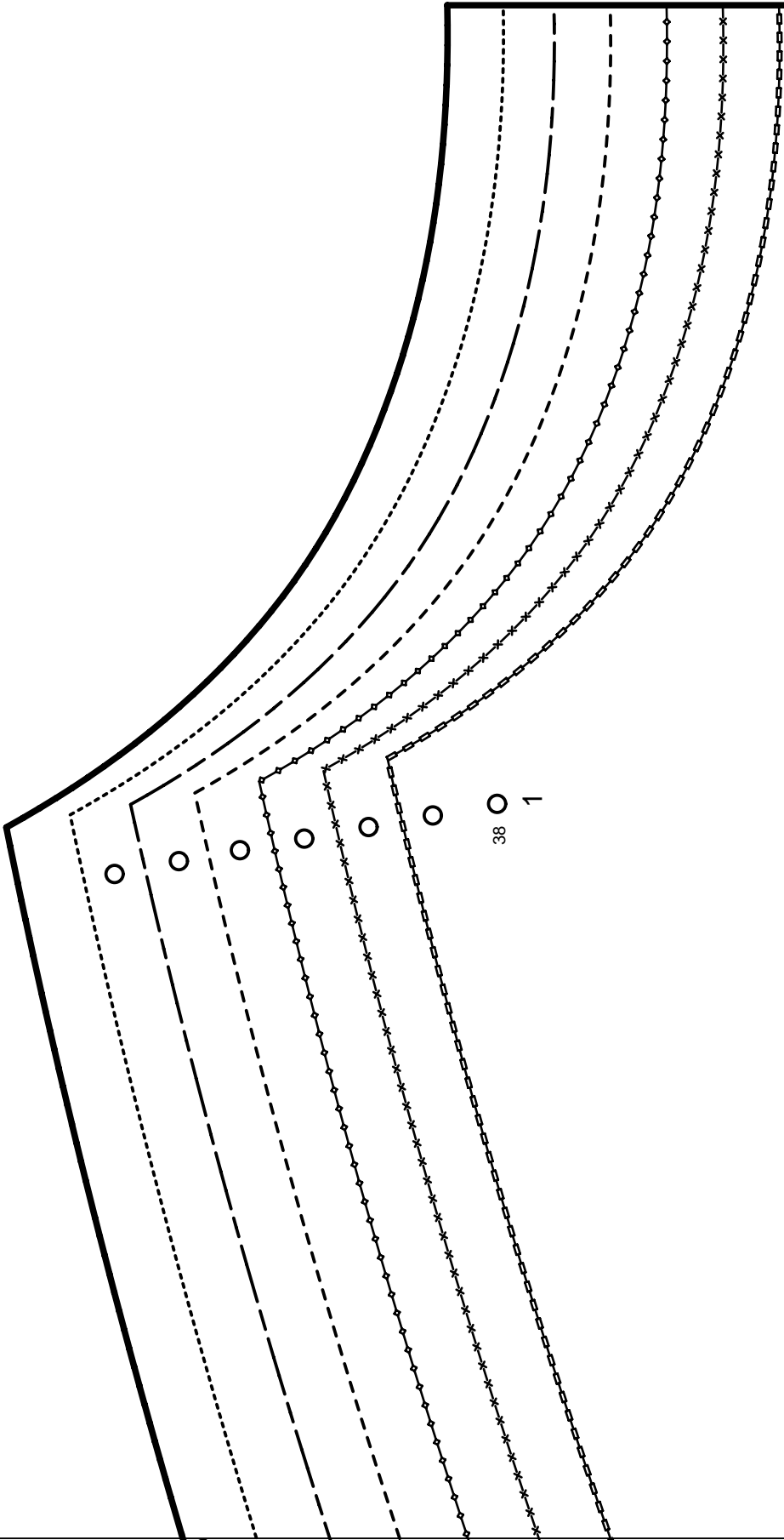


4a

3a

2a

38 1



4b

CENTER FRONT FOLD, STRAIGHT GRAIN
MILIEU DEVANT PLIURE, DROIT FIL
MEDIO DELANTERO DOBLEZ SENT.HILO

3a

3b

LENGTHEN OR SHORTEN HERE
RALLONGER OU RACCOURCIR ICI
ALARGAR O ACORTAR AQUI

2b

3b

FINISHED BUST	TOUR DE POITRINE		CONTORNO BUSTO	
SIZE	38	42	$\frac{1}{4}$ "	107cm
	40	43	$\frac{3}{4}$ "	111cm
	42	45	$\frac{3}{4}$ "	116cm
	44	47	$\frac{1}{4}$ "	120cm
	46	49"		124cm
	48	51	$\frac{1}{2}$ "	131cm
	50	54"		137cm

2c

4c

PLACEMENT
RACCORD
TOPE

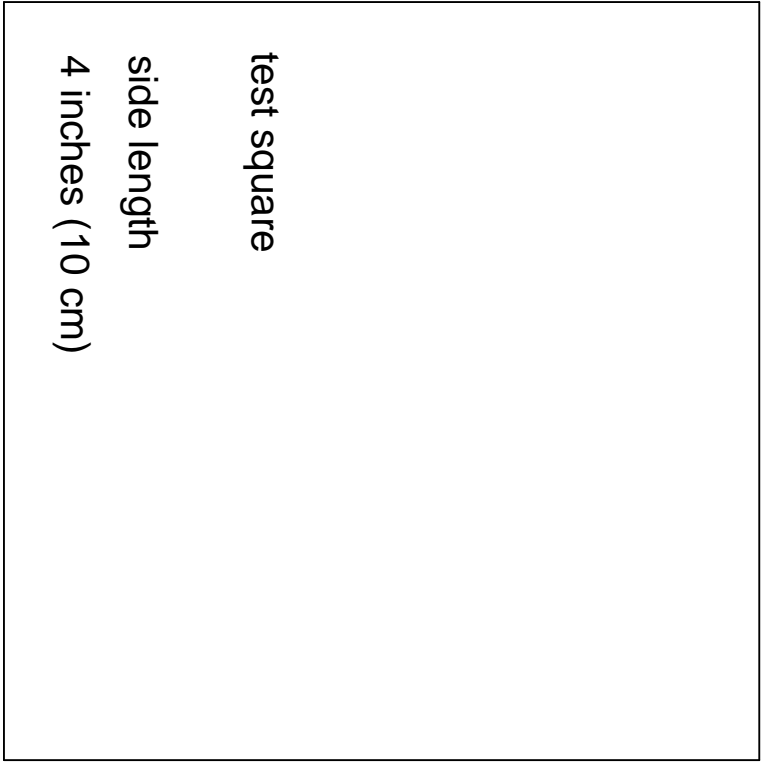
CASING
COULISSE
JARETA

LENGTHEN OR SHORTEN HERE
RALLONGER OU RACCOURCIR ICI
ALARGAR O ACORTAR AQUI

3c

WAIST
TAILLE
CINTURA

4d



3d

3c

2d

FINISHED HIP	TOUR DE HANCHES		MEASUREMENTS CADERA	
SIZE	38	47	$\frac{1}{4}$ "	120cm
	40	49	$\frac{1}{4}$ "	125cm
	42	51	$\frac{1}{4}$ "	130cm
	44	52	$\frac{3}{4}$ "	134cm
	46	54	$\frac{3}{4}$ "	139cm
	48	57	$\frac{1}{2}$ "	146cm
	50	60	$\frac{1}{4}$ "	153cm

LENGTHEN OR SHORTEN HERE
RALLONGER OU RACCOURCIR ICI
ALARGAR O ACORTAR AQUI

3d

2e

1

FRONT
DEVANT
DELANTERO



1 x

ON THE FOLD
DANS LA PLIURE DU TISSU
CON CANTO DOBLADO

$\frac{5}{8}$ "
(1,5cm)

SEAM ALLOWANCE INCLUDED
AVEC VALEUR DE COUTURE
CON MARGEN DE COSTURA

N 7969

Burda
STYLE

www.burdastyle.com

4e

3e

KEY TO SYMBOLS

LEGENDE

INTERPRETACION DE LOS SIMBOLOS



SYMBOL FOR STITCHING LINES
REMARQUE CONCERNANT LES LIGNES DE PIQUES
INDICACION PARA LINEAS DE PESPUNTE



SEAM ATTACHMENT POINT
POINT DE RACCORD DE LA COUTURE
PUNTO DE AJUSTE DE LA COSTURA



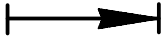
SEAM NUMBERS ARE MATCHING SYMBOLS AND DENOTE
WHERE TWO PIECES SHOULD BE SEWN TOGETHER.
LES CHIFFRES-REPERES INDIQUENT OU ASSEMBLER LES PIECES.
LES CHIFFRES IDENTIQUES COINCIDENT.
LOS NUMEROS DE COSTURA INDICAN DONDE LAS PIEZAS.
LOS MISMOS NUMEROS CONCIDEN.



GATHER BETWEEN THE STARS.
FRONCER ENTRE LES ASTERISQUES.
EMBEBER ENTRE LAS ESTRELLAS.



EASE IN BETWEEN THE DOTS.
SOUTENIR ENTRE LES POINTS.
EMBEBER ENTRE LOS PUNTOS.



POSITION PLEATS IN DIRECTION OF ARROW.
POSER LES PLIS DANS LE SENS DES FLECHES.
PONER LOS PLIEQUES SEGUN LA FLECHA.



SYMBOL INDICATING THE BEGINNING OR END OF VENT.
REPERE DE DEBUT OU DE FIN DE FENTE.
MARCA PARA EL PRINCIPIO O FINAL DE LA ABERTURA.



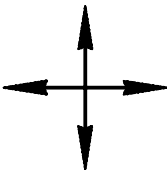
SLASH
FENTE
CORTE



BUTTONHOLE
BOUTONNIERE
OIAL



BUTTON OR SNAP
BOUTON OU BOUTON-PRESSION
BOTON O BROCHE DE PRESSION



SEE CUTTING DIAGRAMS FOR STRAIGHT GRAIN OF FABRIC
SENS DU DROIT-FIL VOIR LES PLANS DE COUPE
DIRECCION DEL HILO, VEANSE PLANOS DE CORTE

4g

HEM ALLOWANCE
1 ⁵/₈" (4cm)
VALEUR D'OURLET
MARGEN DE DOBLADILLO

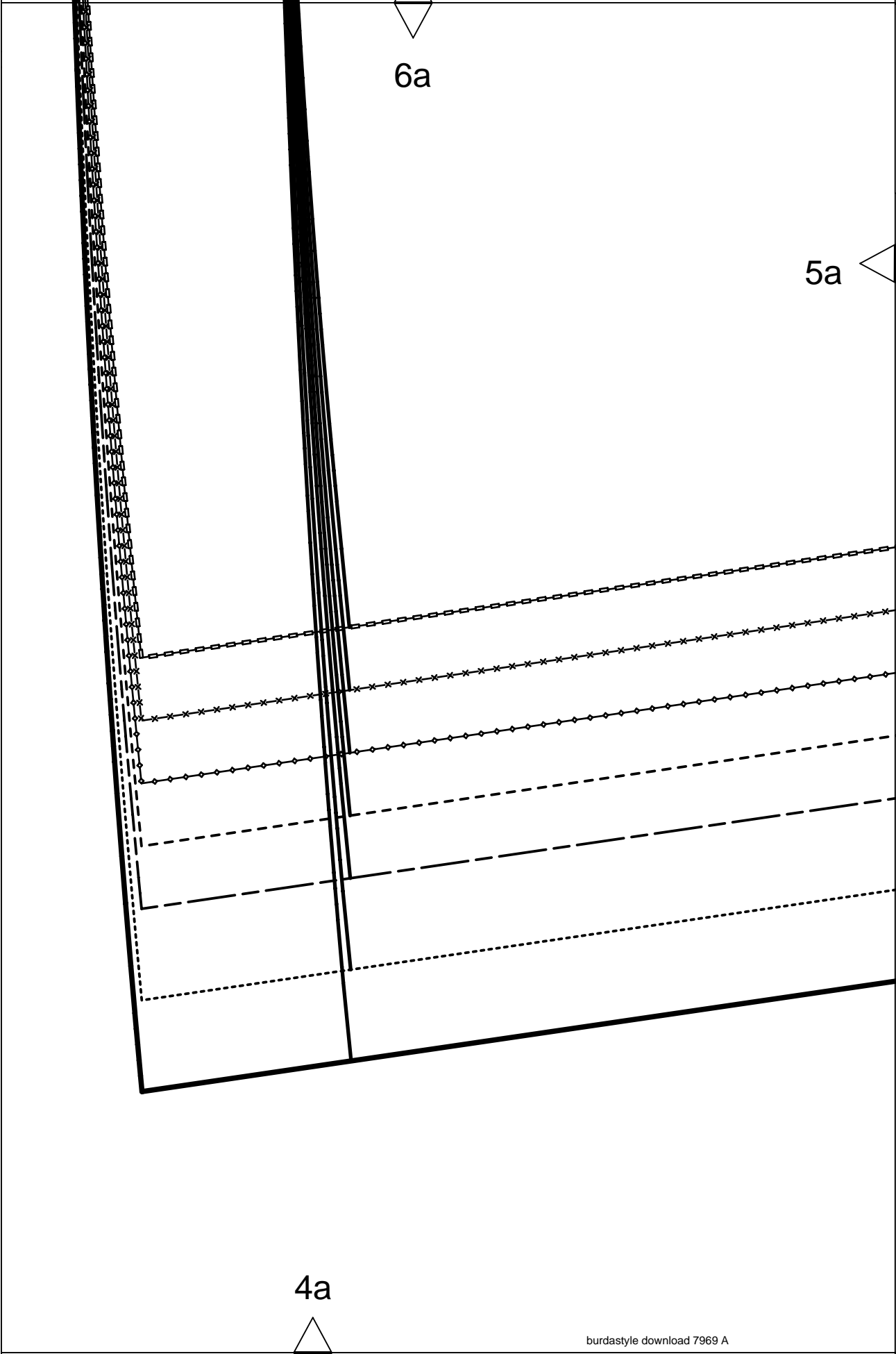
3f

2g

6a

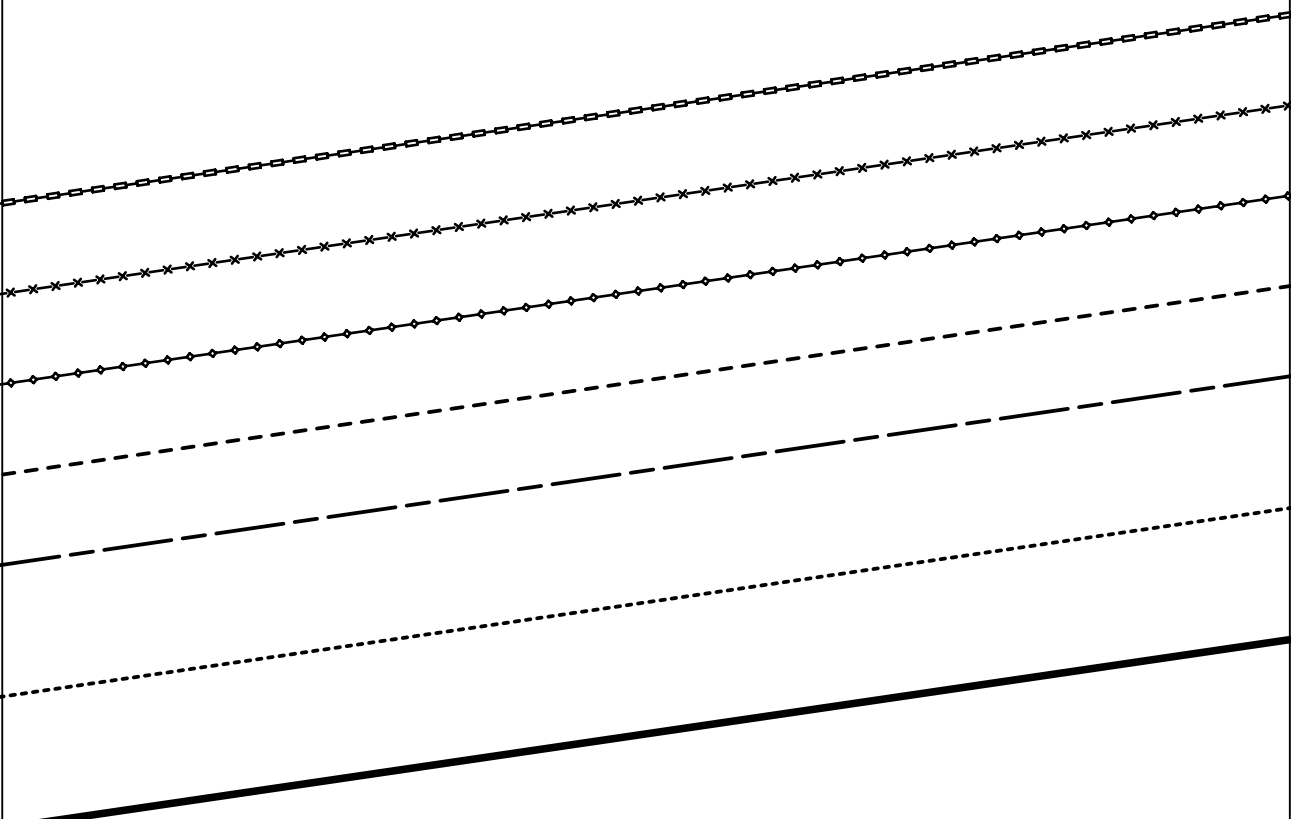
5a

4a



6b

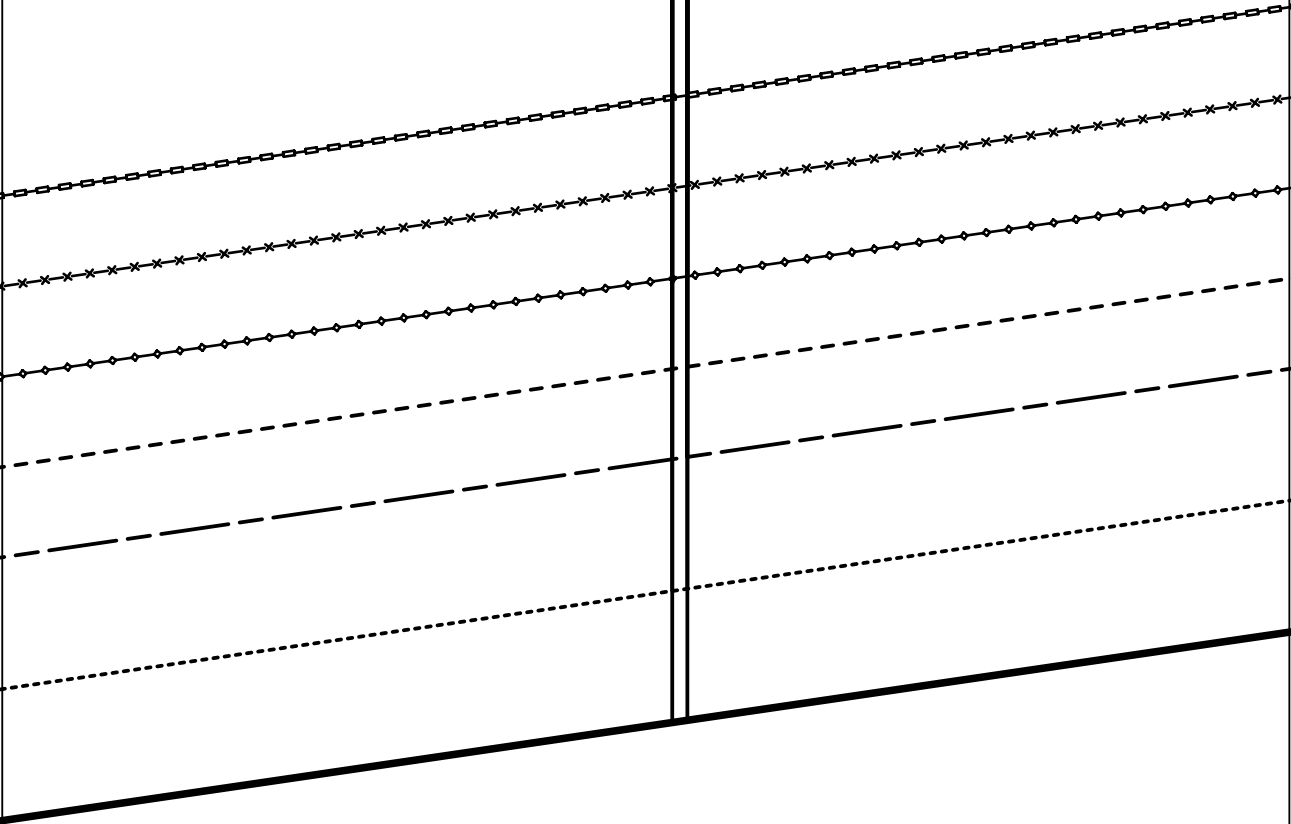
5a



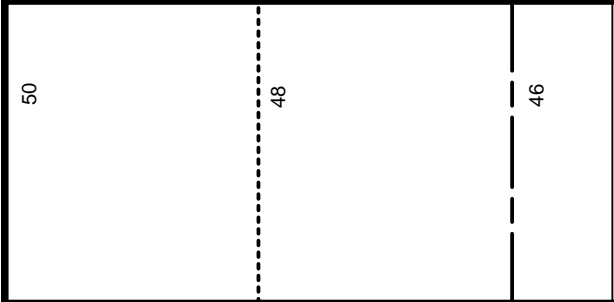
5b

4b

6c



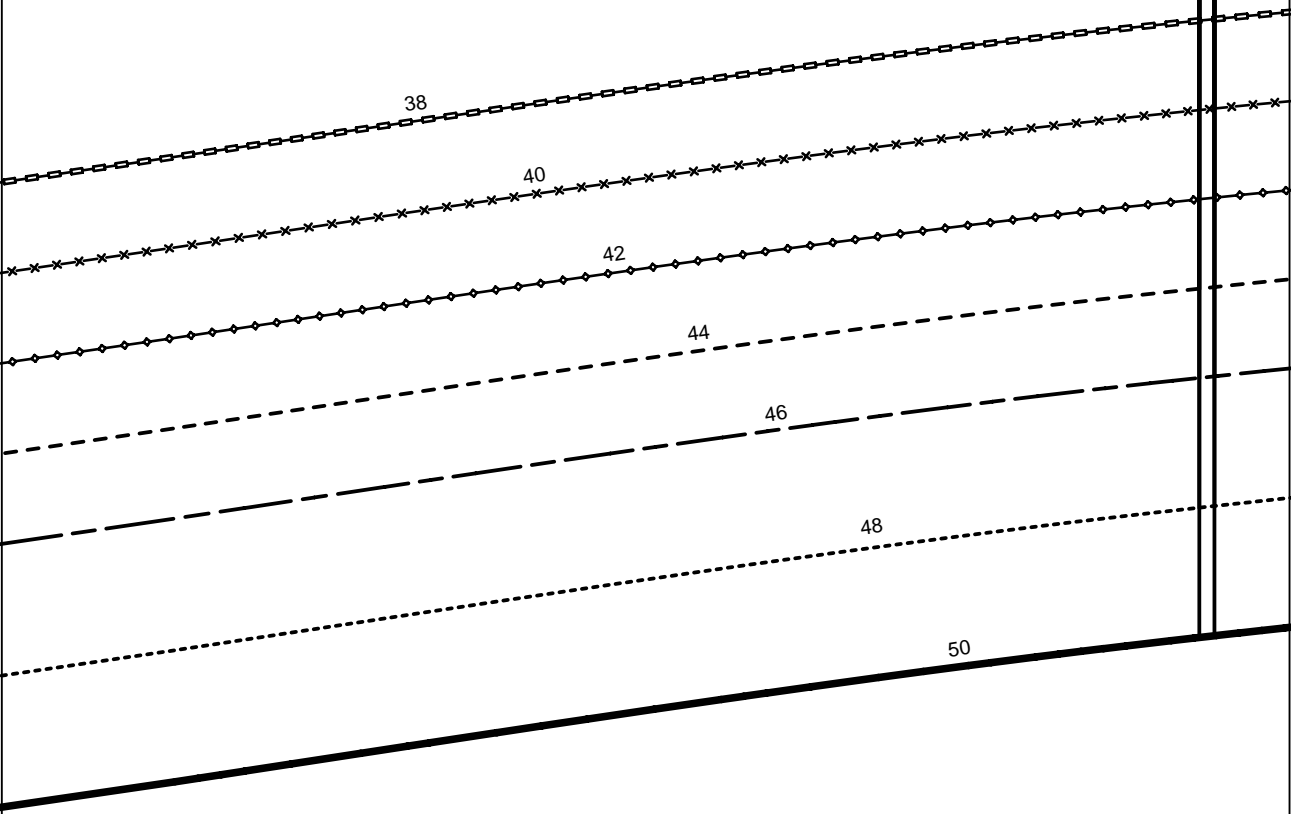
5b



4c

5c

6d



5d



44

42

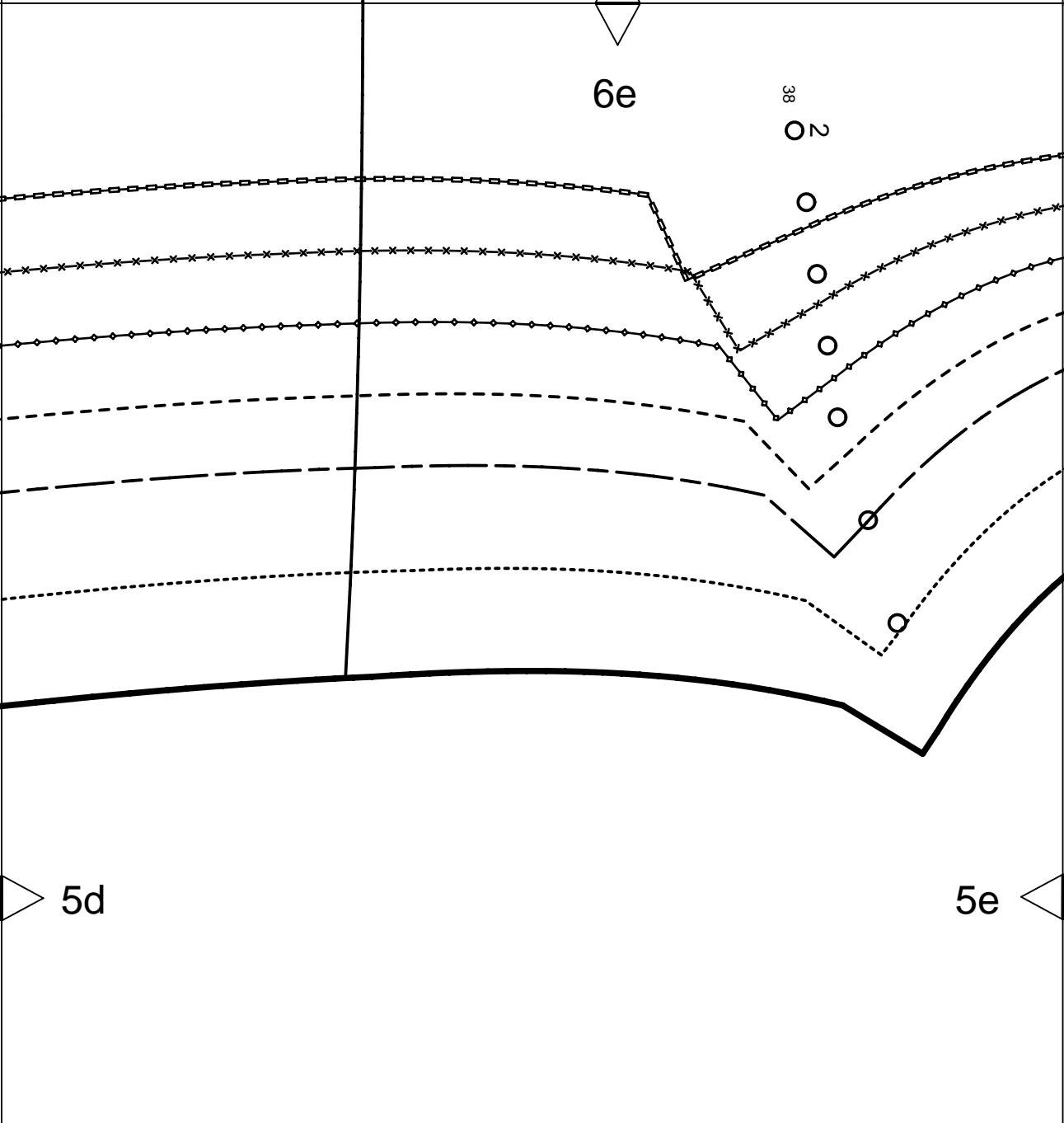
40

38

CENTER BACK
 MILIEU DOS
 CENTRO POST.
 SEAM
 COUTURE
 COSTURA

5c

4d



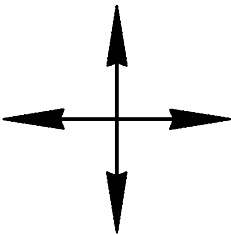
6e

38

ON

5d

5e



3

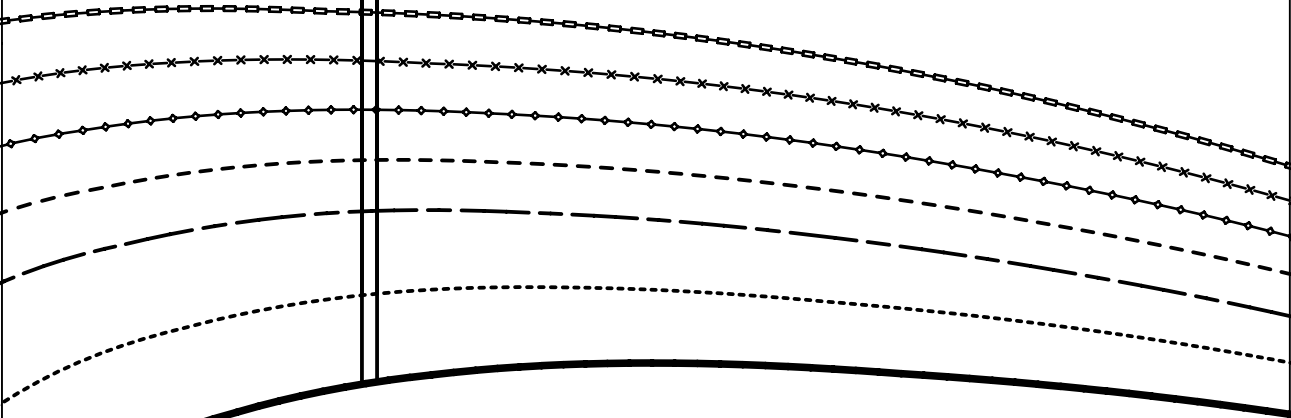
BAND
PATTE/PAREMENT
CENEFA



7969

4e

6f



5e

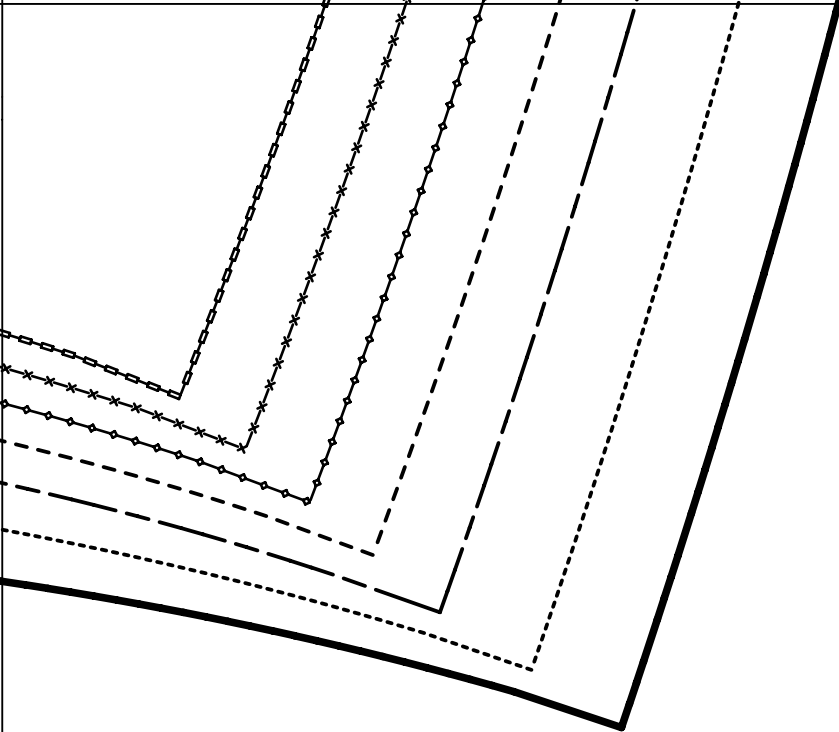
5f



4f



6g



5f

Burda
STYLE

www.burdastyle.com

4g

HEM-FOLDLINE

PLIURE DE L'OURLET
DOBLADILLO-LINEA DE DOBLEZ

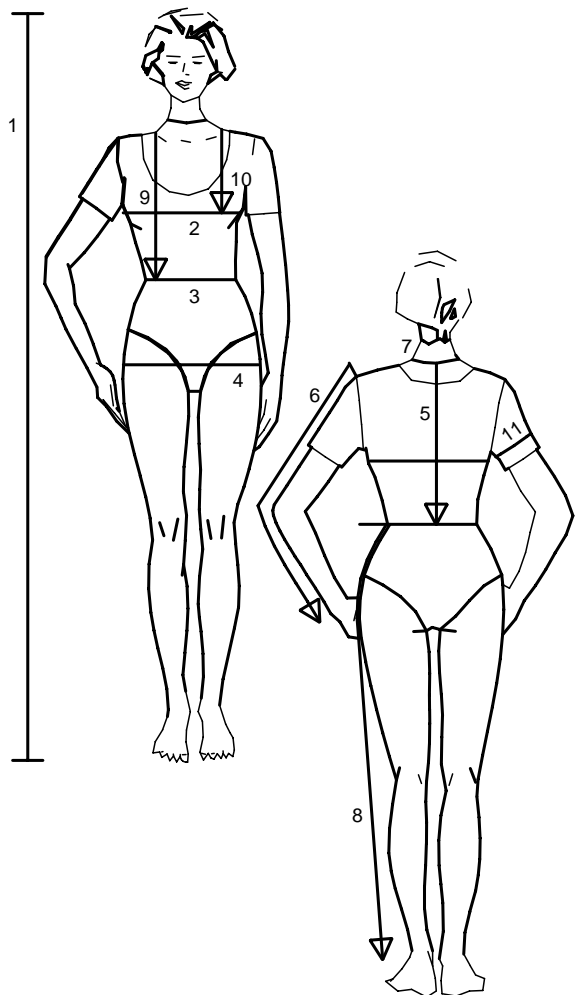
$1 \frac{5}{8}$ " (4cm)

HEM ALLOWANCE
VALEUR D'OURLET
MARGEN DE DOBLADILLO

6a

7a

Size Taille Talla		32	34	36	38	40	42	44	46	48	50	52	54	56	58	60
1	inches	66 1/4	66 1/4	66 1/4	66 1/4	66 1/4	66 1/4	66 1/4	66 1/4	66 1/4	66 1/4	66 1/4	66 1/4	66 1/4	66 1/4	66 1/4
	cm	168	168	168	168	168	168	168	168	168	168	168	168	168	168	168
2	inches	30	31 1/2	33	34 3/4	36 1/4	37 3/4	39 1/2	41	43 1/2	45 1/2	48	50 1/2	52 3/4	55 1/4	57 1/2
	cm	76	80	84	88	92	96	100	104	110	116	122	128	134	140	146
3	inches	23	24 1/2	26	27 3/4	29 1/4	30 3/4	32 1/2	34	36 1/4	38 3/4	41	43 1/2	45 1/2	48	50 1/2
	cm	58	62	66	70	74	78	82	86	92	98	104	110	116	122	128
4	inches	32 1/2	34	35 1/2	37	38 3/4	40 1/4	41 3/4	43 1/2	45 1/2	48	50 1/2	52 3/4	55 1/4	57 1/2	60
	cm	82	86	90	94	98	102	106	110	116	122	128	134	140	146	152
5	inches	15 3/4	16	16 1/4	16 1/2	16 1/2	16 3/4	17	17 1/4	17 1/4	17 1/2	17 3/4	18	18 1/4	18 1/2	18 1/2
	cm	40	40,5	41	41,5	42	42,5	43	43,5	44	44,5	45	45,5	46	46,5	47
6	inches	23 1/4	23 1/4	23 1/4	23 3/4	23 3/4	24	24	24	24	24 1/2	24 1/2	24 1/2	24 3/4	24 3/4	24 3/4
	cm	59	59	59	60	60	61	61	61	61	62	62	62	63	63	63
7	inches	13	13 1/2	14 1/4	14 1/2	14 3/4	15	15 1/2	15 3/4	16 1/4	16 1/2	17	17 1/4	17 3/4	18 1/4	18 1/2
	cm	33	34	35	36	37	38	39	40	41	42	43	44	45	46	47
8	inches	39 3/4	40 1/4	40 1/4	40 3/4	41	41	41 1/2	41 1/2	41 1/2	41 3/4	41 3/4	41 3/4	42 1/4	42 1/2	42 1/2
	cm	101	102	102	103	104	104	105	105	105	106	106	106	107	108	108
9	inches	16 1/2	17	17 1/4	17 3/4	18 1/4	18 1/2	19	19 1/4	19 3/4	20 1/4	20 1/2	21	21 1/4	21 3/4	22 1/4
	cm	42	43	44	45	46	47	48	49	50	51	52	53	54	55	56
10	inches	9 1/2	9 7/8	10 1/4	10 3/4	11 1/8	11 1/2	11 7/8	12 1/4	12 3/4	13	13 1/2	14 1/4	14 1/2	14 3/4	15
	cm	24	25	26	27	28	29	30	31	32	33	34	35	36	37	38
11	inches	9 7/8	10 1/4	10 3/4	11 1/8	11 1/2	11 7/8	12 1/4	12 3/4	13 1/2	14 1/2	15	15 3/4	16 1/2	17 1/4	18 1/4
	cm	25	26	27	28	29	30	31	32	34	36	38	40	42	44	46



- englisch
1. Height
 2. Bust
 3. Waist
 4. Hip
 5. Back length
 6. Sleeve length
 7. Neck width
 8. Side leg length
 9. Front waist length
 10. Bust point
 11. Upper arm circumf.

For dresses, blouses, coats and jackets select size according to bust measurement, for trousers and skirts according to hip measurement!
All burda patterns are prepared with ease allowance appropriate for style in question.

- français
1. Stature
 2. Tour de poitrine
 3. Tour de taille
 4. Tour des hanches
 5. Long. du dos
 6. Longueur de manche
 7. Tour de cou
 8. Long. côté pantalon
 9. Long. taille devant
 10. Profondeur de poitrine
 11. Tour du bras

Robes, corsages, manteaux et vestes seront choisis d'après votre tour de poitrine les pantalons et les jupes d'après votre tour de hanches!
Tous les patrons sont établis avec l'aisance nécessaire selon le genre du modèle.

- español
1. Estatura
 2. Contorno busto
 3. Contorno cintura
 4. Contorno cadera
 5. Largo espalda
 6. Largo manga
 7. Contorno cuello
 8. Largo lateral del pantalón
 9. Largo talle delantero
 10. Altura de pecho
 11. Cont. de brazo

La talla para los vestidos, blusas, abrigos y chaquetas, se determina de acuerdo con el contorno del busto. Los pantalones y las faldas, de acuerdo con el contorno de las caderas.
En el patrón-Burda se incluyen los márgenes para la holgura necesaria.

7a

6b

7b

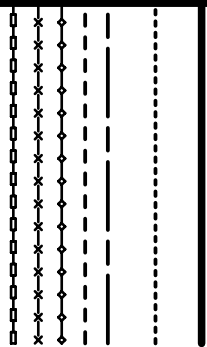
7c

LENGTHEN OR SHORTEN HERE
RALLONGER OU RACCOURCIR ICI
ALARGAR O ACORTAR AQUI

6c

7b

WAIST
TALLE
CINTURA



7c

7d

Burda
STYLE

www.burdastyle.com

LENGTHEN OR SHORTEN HERE
RALLONGER OU RACCOURCIR ICI
ALARGAR O ACORTAR AQUI

6d

CENTER BACK FOLD STRAIGHT GRAIN
PLIURE DU TISSU MILIEU DOS DROIT FIL
CENTRO POSTERIOR DOBLEZ DIR.HILO

CASING
COULISSE
JARETA

PLACEMENT
RACCORD
TOPE

7d

7e

6e

2

BACK
DOS
ESPALDA



1 x

ON THE FOLD
DANS LA PLIURE DU TISSU
CON CANTO DOBLADO

5/8"

(1,5cm)

SEAM ALLOWANCE INCLUDED
AVEC VALEUR DE COUTURE
CON MARGEN DE COSTURA

7 9 6 9

7f

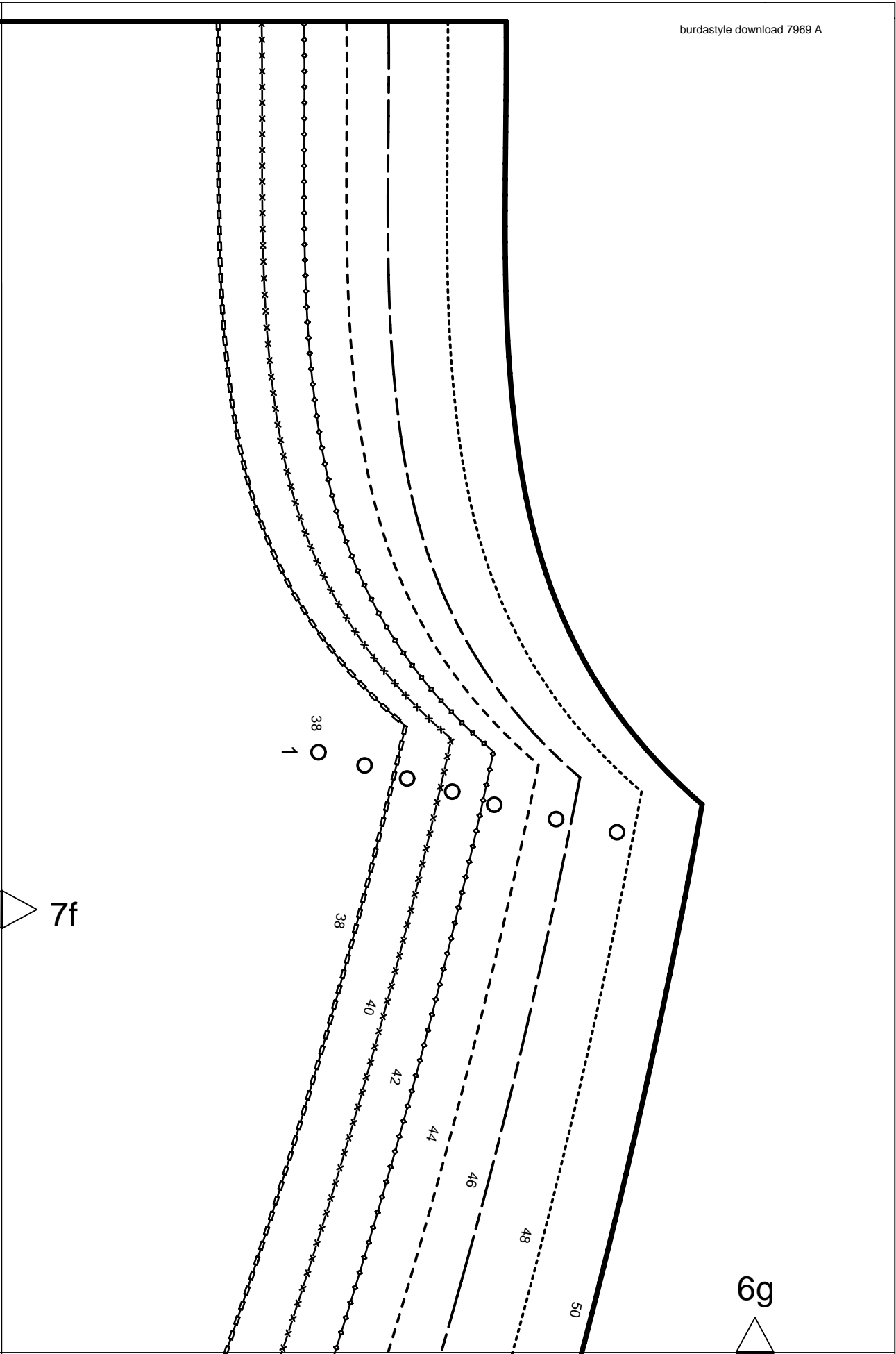
Burda
STYLE

www.burdastyle.com

LENGTHEN OR SHORTEN HERE
RALLONGER OU RACCOURCIR ICI
ALARGAR O ACORTAR AQUI

6f

7e



7f

6g

38
1

38

40

42

44

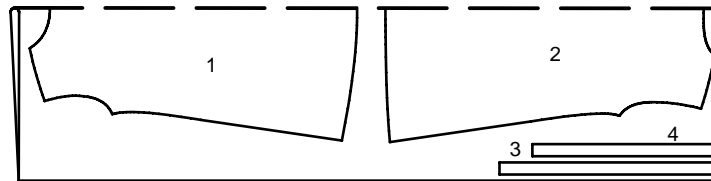
46

48

50

PATTERN LAYOUTS
PLANS DE COUPE
PLANOS DE CORTE

45" 114 CM
55" 140 CM



38-50