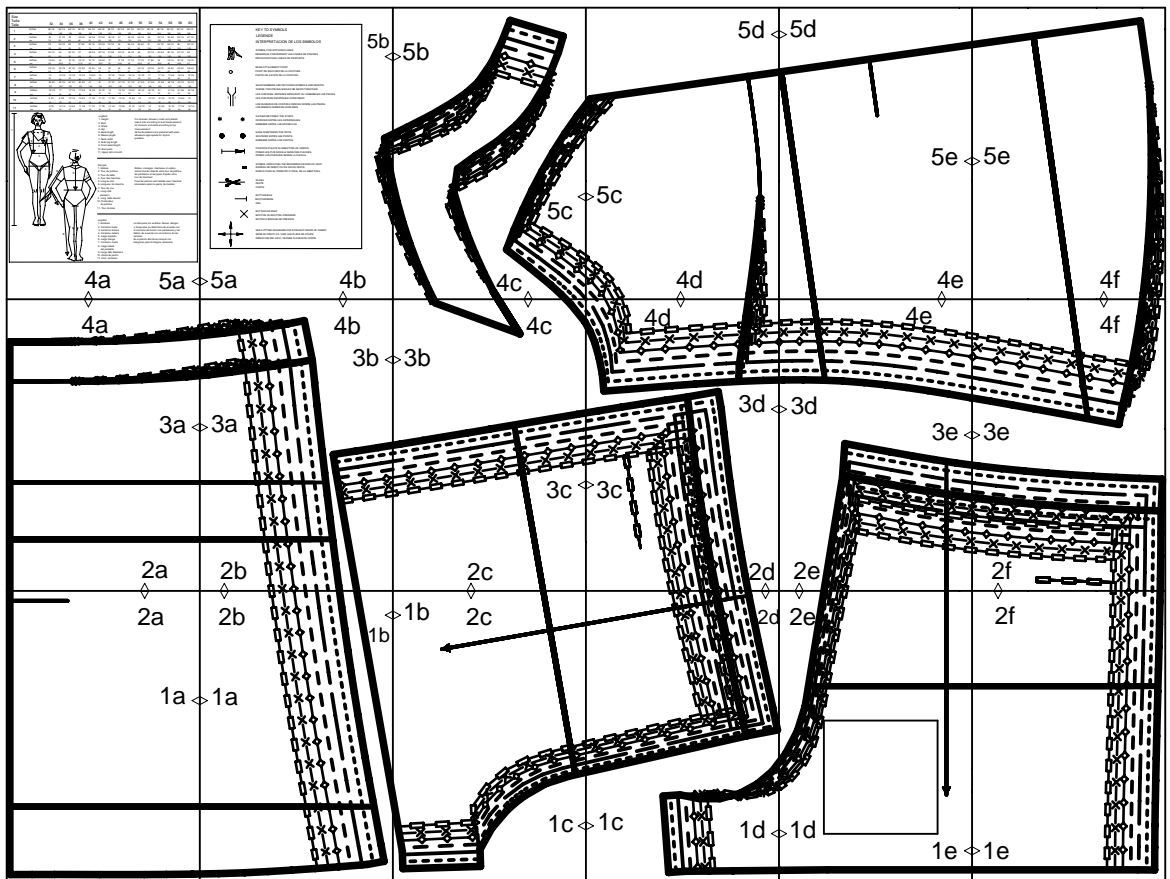


burdastyle download 7997 B

layout drawing



WAIST

TAILLE

CINTURA

2a

2

BACK  
DOS  
ESPALDA



1 x

ON THE FOLD  
DANS LA PLIURE DU TISSU  
CON CANTO DOBLADO

5/8"

(1,5cm)

SEAM ALLOWANCE INCLUDED  
AVEC VALEUR DE COUTURE  
CON MARGEN DE COSTURA

1a

7997

Burda  
STYLE

www.burdastyle.com

LENGTHEN OR SHORTEN HERE  
RALLONGER OU RACCOURCIR ICI  
ALARGAR O ACORTAR AQUI

CENTER BACK FOLD STRAIGHT GRAIN  
PLIURE DU TISSU MILIEU DOS DROIT FIL  
CENTRO POSTERIOR DOBLEZ DIR.HILO



2b

1b

1a

32

34

36

38

40

42

44



2c

1b

LENGTHEN OR SHORTEN HERE  
RALLONGER OU RACCOURCIR ICI  
ALARGAR O ACORTAR AQUI

4

PANTS, FRONT  
DEVANT PANTALON/CULOTTE  
PANTALON ANTERIOR



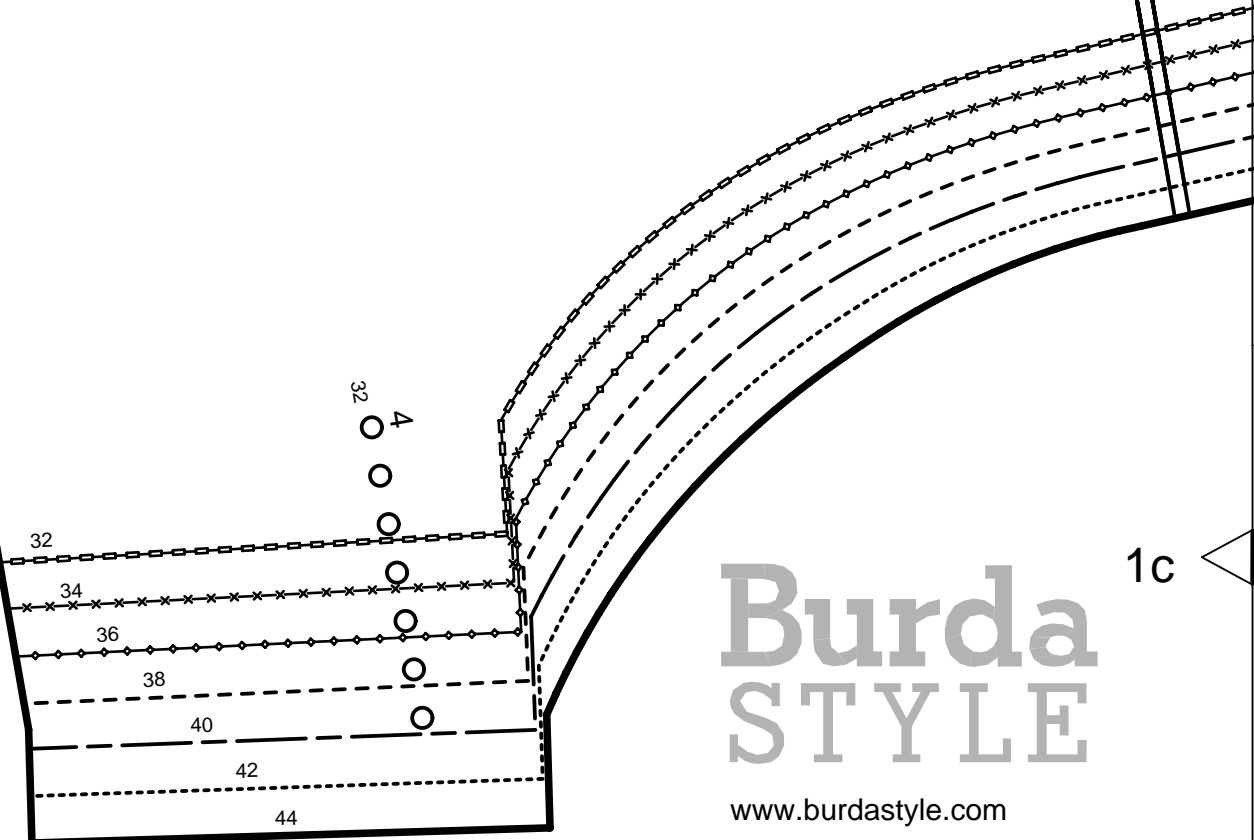
SEAM ALLOWANCE INCLUDED  
AVEC VALEUR DE COUTURE  
CON MARGEN DE COSTURA

5/8"

(1.5cm)

7997

Burda  
STYLE  
www.burdastyle.com



Burda  
STYLE

www.burdastyle.com

1c

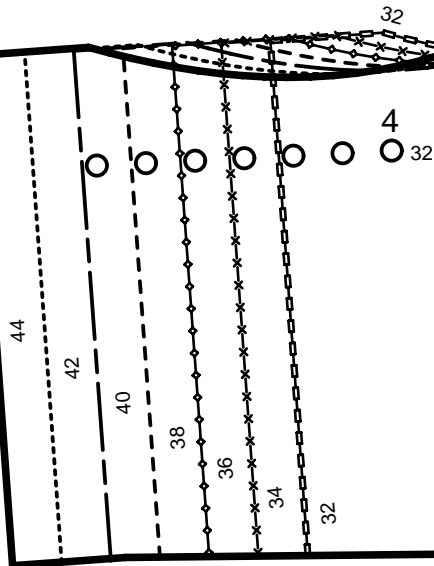
STRAIGHT GRAIN  
DROIT FIL  
SENTIDO HILO

2d

CENTER FRONT SEAM  
COUTURE MILIEU DEVANT  
CENTRO ANTERIOR COSTURA

1c

1d



2e

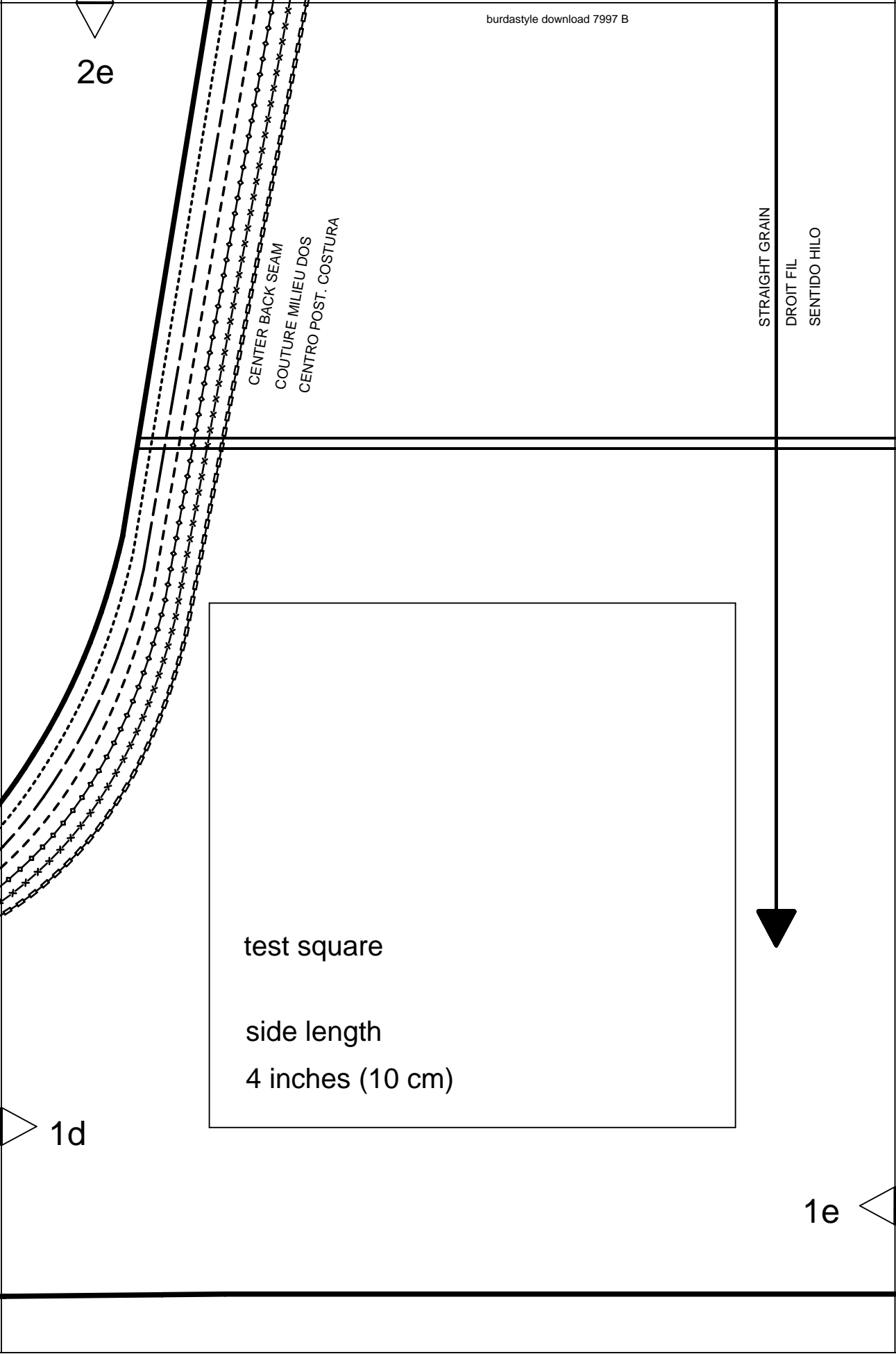
CENTER BACK SEAM  
COUTURE MILIEU DOS  
CENTRO POST. COSTURA

STRAIGHT GRAIN  
DROIT FIL  
SENTIDO HILO

test square  
side length  
4 inches (10 cm)

1d

1e



2f

LENGTHEN OR SHORTEN HERE  
RALLONGER OU RACCOURCIR ICI  
ALARGAR O ACORTAR AQUI

# 5

PANTS, BACK  
DOS PANTALON/CULOTTE  
PANTALON POST.



5/8"  
(1,5cm)

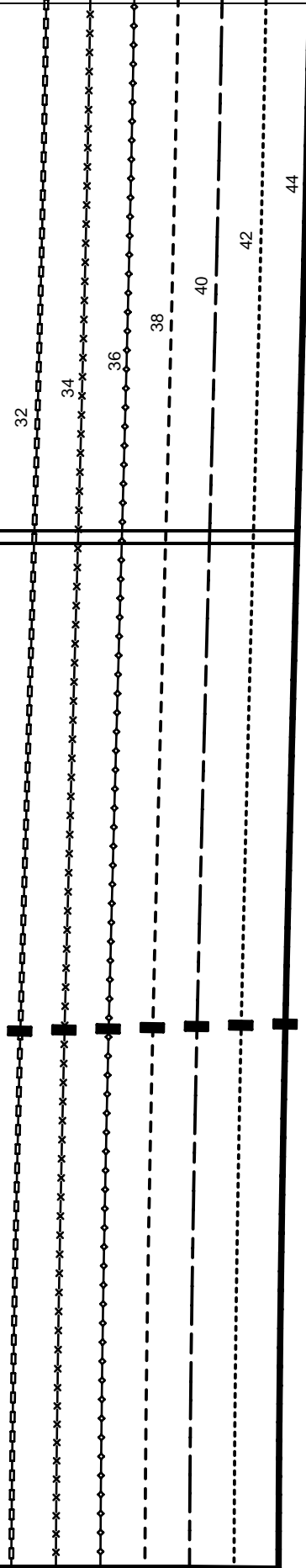
SEAM ALLOWANCE INCLUDED  
AVEC VALEUR DE COUTURE  
CON MARGEN DE COSTURA

## 7997

# Burda STYLE

[www.burdastyle.com](http://www.burdastyle.com)

1e



4a

FACING FOLD  
PAREMENTURE PLIURE  
VISTA DOBLEZ

STRAP  
BRETELLE  
TIRANTE

3a

STRAIGHT GRAIN  
DROIT FIL  
SENTIDO HILO



LENGTHEN OR SHORTEN HERE  
RALLONGER OU RACCOURCIR ICI  
ALARGAR O ACORTAR AQUI

2a



4b

3b

32

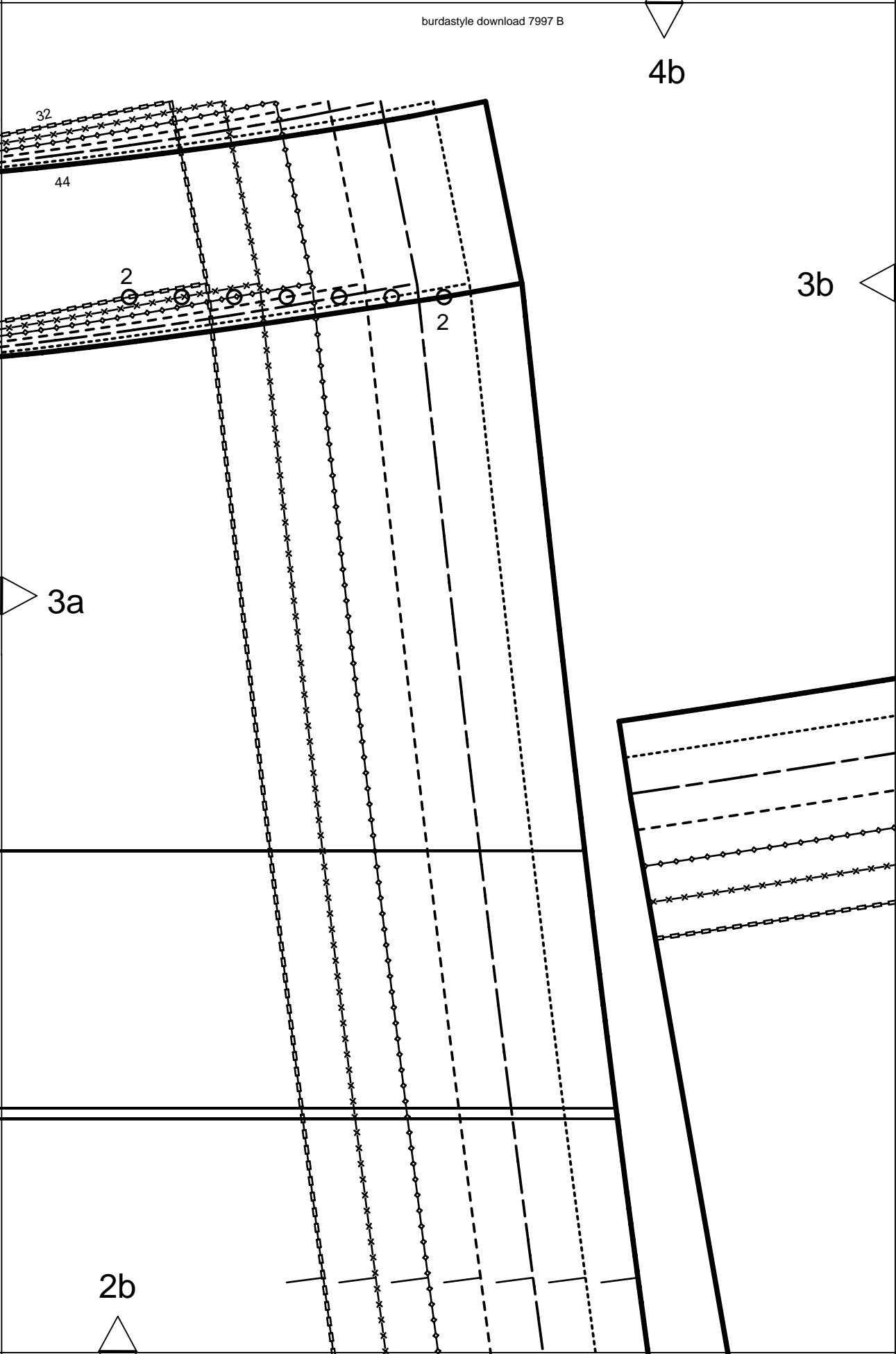
44

2

2

3a

2b



SENTIDO HILO  
 DROIT FIL  
 STRAIGHT GRAIN  
 MEDIO DELANTERO, DOBLEZ  
 PLINE DU TISSU MILIEU DEVANT  
 CENTER FRONT FOLD

4c



3b

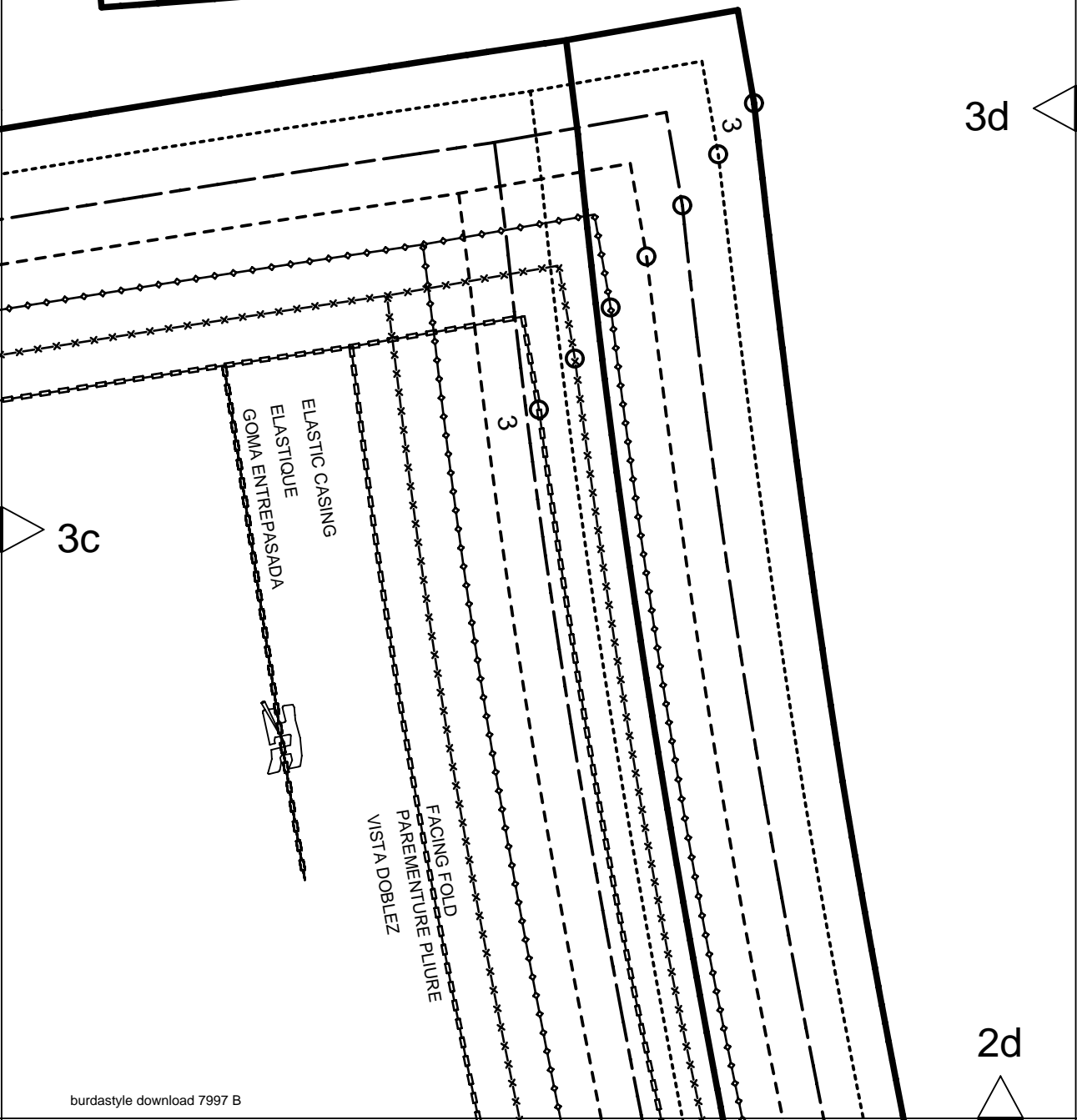
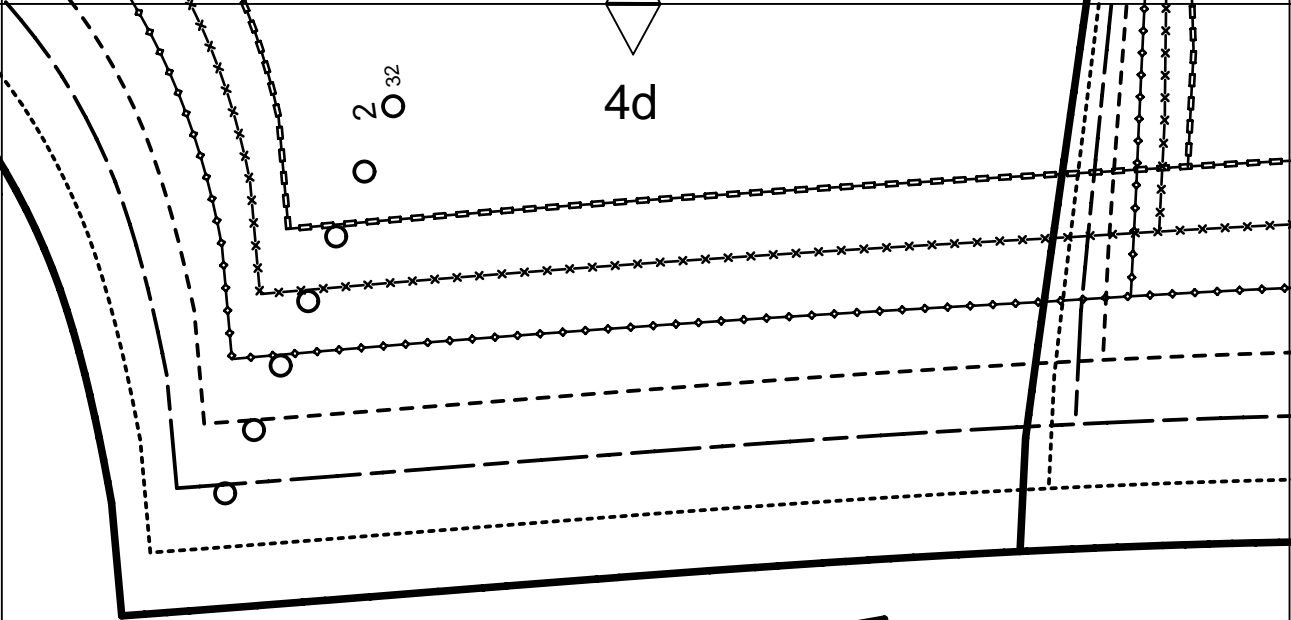


3c

SLIT  
 FENTE  
 ABERTURA

FINISHED HIP	TOUR DE HANCHES	MEASUREMENTS CADERA
32	35	1/2"
34	37"	3/4"
36	38	1/4"
38	40	3/4"
40	41	1/2"
42	43	
44	45"	

2c



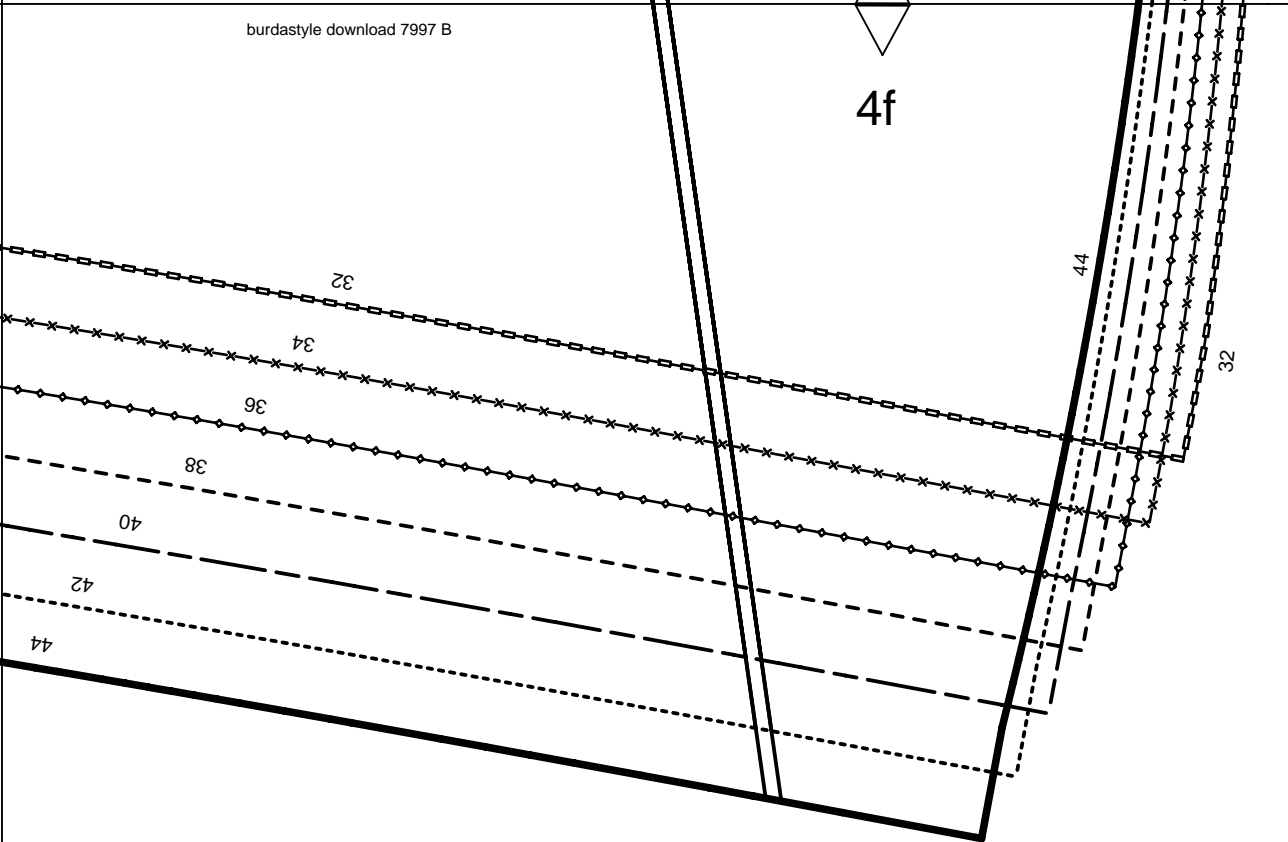
4e

3d

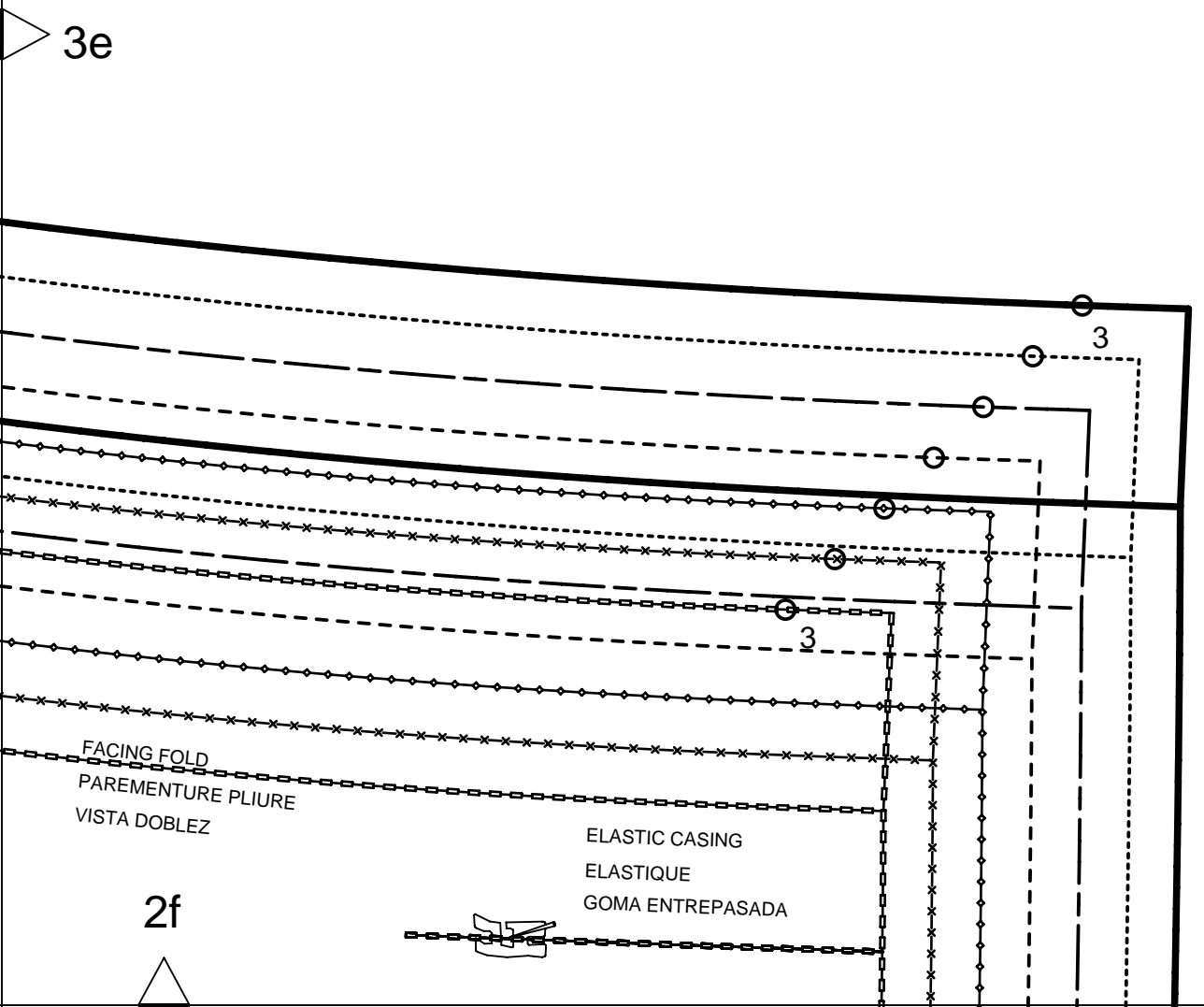
3e

2e

4f



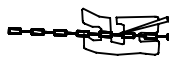
3e



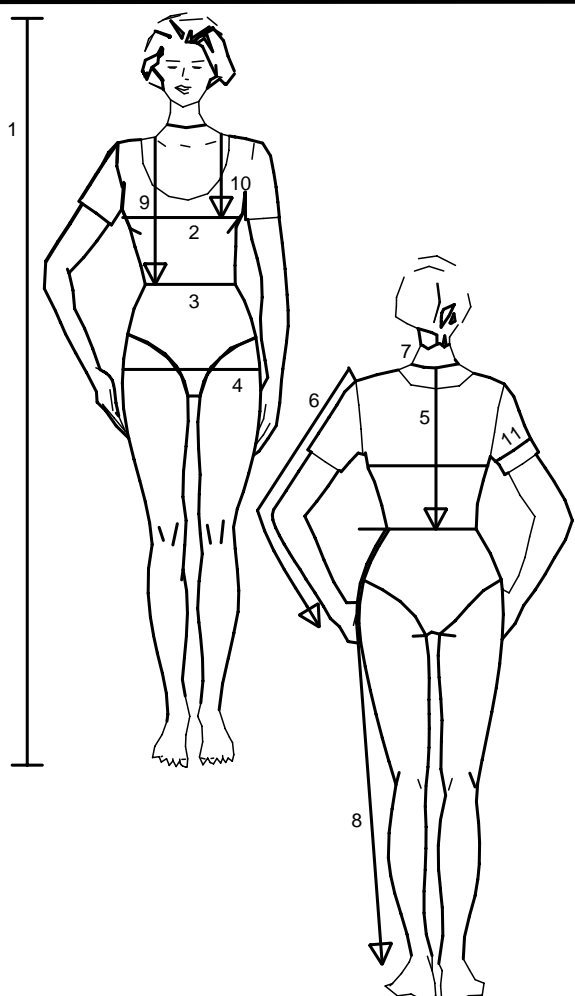
FACING FOLD  
PAREMENTURE PLIURE  
VISTA DOBLEZ

ELASTIC CASING  
ELASTIQUE  
GOMA ENTREPASADA

2f



Size Taille Talla		32	34	36	38	40	42	44	46	48	50	52	54	56	58	60
1	inches	66 1/4	66 1/4	66 1/4	66 1/4	66 1/4	66 1/4	66 1/4	66 1/4	66 1/4	66 1/4	66 1/4	66 1/4	66 1/4	66 1/4	66 1/4
	cm	168	168	168	168	168	168	168	168	168	168	168	168	168	168	168
2	inches	30	31 1/2	33	34 3/4	36 1/4	37 3/4	39 1/2	41	43 1/2	45 1/2	48	50 1/2	52 3/4	55 1/4	57 1/2
	cm	76	80	84	88	92	96	100	104	110	116	122	128	134	140	146
3	inches	23	24 1/2	26	27 3/4	29 1/4	30 3/4	32 1/2	34	36 1/4	38 3/4	41	43 1/2	45 1/2	48	50 1/2
	cm	58	62	66	70	74	78	82	86	92	98	104	110	116	122	128
4	inches	32 1/2	34	35 1/2	37	38 3/4	40 1/4	41 3/4	43 1/2	45 1/2	48	50 1/2	52 3/4	55 1/4	57 1/2	60
	cm	82	86	90	94	98	102	106	110	116	122	128	134	140	146	152
5	inches	15 3/4	16	16 1/4	16 1/2	16 1/2	16 3/4	17	17 1/4	17 1/4	17 1/2	17 3/4	18	18 1/4	18 1/2	18 1/2
	cm	40	40,5	41	41,5	42	42,5	43	43,5	44	44,5	45	45,5	46	46,5	47
6	inches	23 1/4	23 1/4	23 1/4	23 3/4	23 3/4	24	24	24	24	24 1/2	24 1/2	24 1/2	24 3/4	24 3/4	24 3/4
	cm	59	59	59	60	60	61	61	61	61	62	62	62	63	63	63
7	inches	13	13 1/2	14 1/4	14 1/2	14 3/4	15	15 1/2	15 3/4	16 1/4	16 1/2	17	17 1/4	17 3/4	18 1/4	18 1/2
	cm	33	34	35	36	37	38	39	40	41	42	43	44	45	46	47
8	inches	39 3/4	40 1/4	40 1/4	40 3/4	41	41	41 1/2	41 1/2	41 1/2	41 3/4	41 3/4	41 3/4	42 1/4	42 1/2	42 1/2
	cm	101	102	102	103	104	104	105	105	105	106	106	106	107	108	108
9	inches	16 1/2	17	17 1/4	17 3/4	18 1/4	18 1/2	19	19 1/4	19 3/4	20 1/4	20 1/2	21	21 1/4	21 3/4	22 1/4
	cm	42	43	44	45	46	47	48	49	50	51	52	53	54	55	56
10	inches	9 1/2	9 7/8	10 1/4	10 3/4	11 1/8	11 1/2	11 7/8	12 1/4	12 3/4	13	13 1/2	14 1/4	14 1/2	14 3/4	15
	cm	24	25	26	27	28	29	30	31	32	33	34	35	36	37	38
11	inches	9 7/8	10 1/4	10 3/4	11 1/8	11 1/2	11 7/8	12 1/4	12 3/4	13 1/2	14 1/2	15	15 3/4	16 1/2	17 1/4	18 1/4
	cm	25	26	27	28	29	30	31	32	34	36	38	40	42	44	46



- english
1. Height
  2. Bust
  3. Waist
  4. Hip
  5. Back length
  6. Sleeve length
  7. Neck width
  8. Side leg length
  9. Front waist length
  10. Bust point
  11. Upper arm circumf.

For dresses, blouses, coats and jackets select size according to bust measurement, for trousers and skirts according to hip measurement!  
All burda patterns are prepared with ease allowance appropriate for style in question.

- français
1. Stature
  2. Tour de poitrine
  3. Tour de taille
  4. Tour des hanches
  5. Long. du dos
  6. Longueur de manche
  7. Tour de cou
  8. Long. côté pantalon
  9. Long. taille devant
  10. Profondeur de poitrine
  11. Tour du bras

Robes, corsages, manteaux et vestes seront choisis d'après votre tour de poitrine les pantalons et les jupes d'après votre tour de hanches!  
Tous les patrons sont établis avec l'aisance nécessaire selon le genre du modèle.

- español
1. Estatura
  2. Contorno busto
  3. Contorno cintura
  4. Contorno cadera
  5. Largo espalda
  6. Largo manga
  7. Contorno cuello
  8. Largo lateral del pantalón
  9. Largo talle delantero
  10. Altura de pecho
  11. Cont. de brazo

La talla para los vestidos, blusas, abrigos y chaquetas, se determina de acuerdo con el contorno del busto. Los pantalones y las faldas, de acuerdo con el contorno de las caderas.  
En el patrón-Burda se incluyen los márgenes para la holgura necesaria.

KEY TO SYMBOLS  
 LEGENDE  
 INTERPRETACION DE LOS SIMBOLOS



SYMBOL FOR STITCHING LINES  
 REMARQUE CONCERNANT LES LIGNES DE PIQURES  
 INDICACION PARA LINEAS DE PESPUNTE



SEAM ATTACHMENT POINT  
 POINT DE RACCORD DE LA COUTURE  
 PUNTO DE AJUSTE DE LA COSTURA



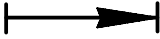
SEAM NUMBERS ARE MATCHING SYMBOLS AND DENOTE  
 WHERE TWO PIECES SHOULD BE SEWN TOGETHER.  
 LES CHIFFRES-REPERES INDIQUENT OU ASSEMBLER LES PIECES.  
 LES CHIFFRES IDENTIQUES COINCIDENT.  
 LOS NUMEROS DE COSTURA INDICAN DONDE LAS PIEZAS.  
 LOS MISMOS NUMEROS COINCIDEN.



GATHER BETWEEN THE STARS.  
 FRONCER ENTRE LES ASTERISQUES.  
 EMBEBER ENTRE LAS ESTRELLAS.



EASE IN BETWEEN THE DOTS.  
 SOUTENIR ENTRE LES POINTS.  
 EMBEBER ENTRE LOS PUNTOS.



POSITION PLEATS IN DIRECTION OF ARROW.  
 POSER LES PLIS DANS LE SENS DES FLECHES.  
 PONER LOS PLIEQUES SEGUN LA FLECHA.



SYMBOL INDICATING THE BEGINNING OR END OF VENT.  
 REPERE DE DEBUT OU DE FIN DE FENTE.  
 MARCA PARA EL PRINCIPIO O FINAL DE LA ABERTURA.



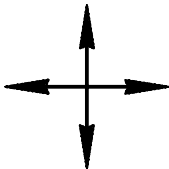
SLASH  
 FENTE  
 CORTE



BUTTONHOLE  
 BOUTONNIERE  
 OIAL



BUTTON OR SNAP  
 BOUTON OU BOUTON-PRESSION  
 BOTON O BROCHE DE PRESION



SEE CUTTING DIAGRAMS FOR STRAIGHT GRAIN OF FABRIC  
 SENS DU DROIT-FIL VOIR LES PLANS DE COUPE  
 DIRECCION DEL HILO, VEANSE PLANOS DE CORTE

5b

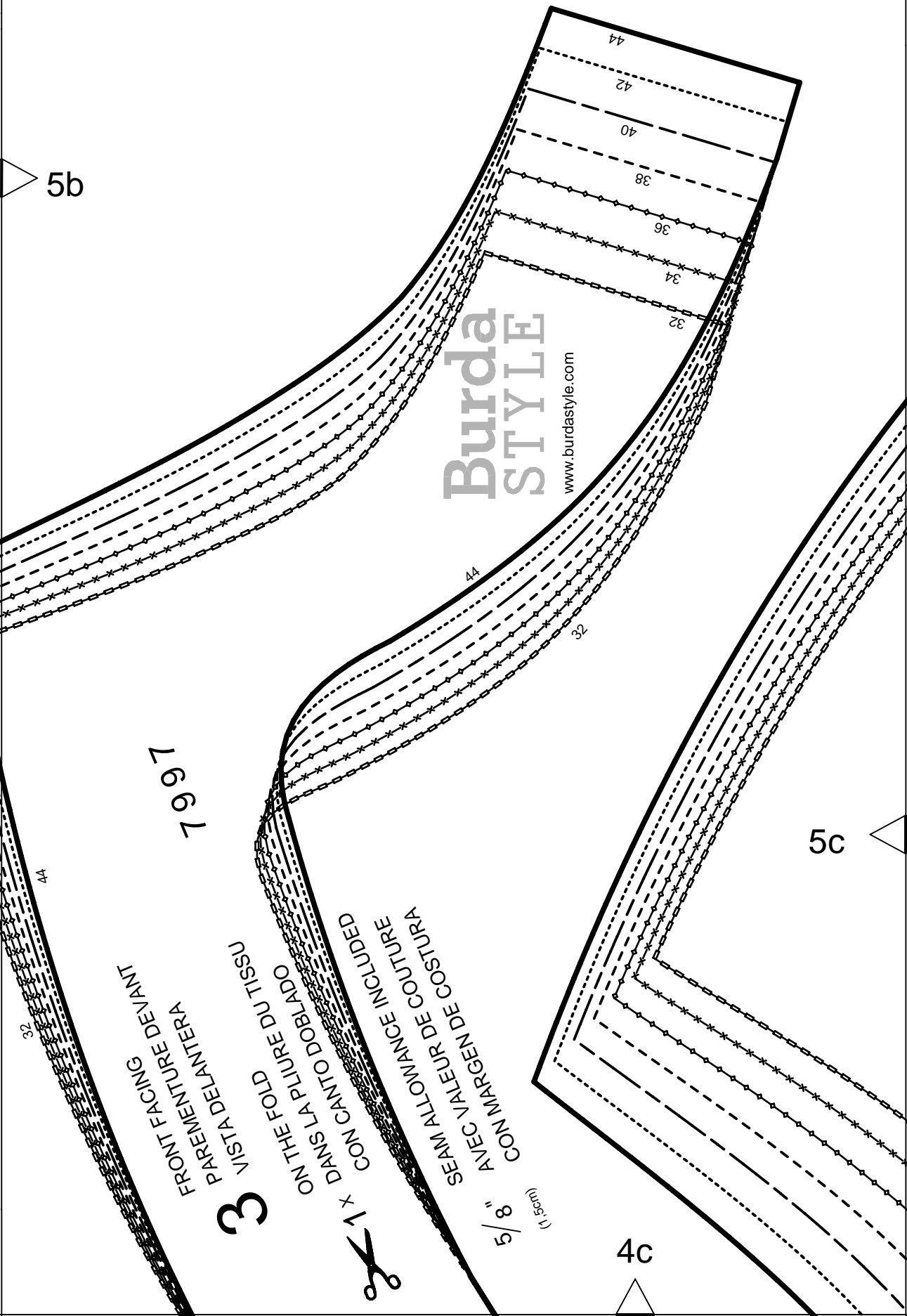


5a

4b

Burda  
STYLE

www.burdastyle.com



5b


5c

7997

FRONT FACING  
 PAREMENTURE DEVANT  
 VISTA DELANTERA

**3**  
 ON THE FOLD  
 DANS LA PLEURE DU TISSU  
 CON CANTO DOBLADO

SEAM ALLOWANCE INCLUDED  
 AVEC VALEUR DE COUTURE  
 CON MARGEN DE COSTURA

1 x  **5/8"** (1.3cm)

4c



5d

CENTER FRONT FOLD, STRAIGHT GRAIN  
 MILIEU DEVANT PLURE, DROIT FIL  
 MEDIO DELANTERO DOBLEZ SENT.HILO

5c

CONTORNO	
BUSTO	
1/2"	80cm
	84cm
3/4"	88cm
1/4"	92cm
3/4"	96cm
1/2"	100cm
	104cm

TOUR DE	
POITRINE	
32	31
34	33"
36	34
38	36
40	37
42	39
44	41"

FINISHED  
 BUST

SIZE

4d

5d

STRAIGHT GRAIN  
DROIT FIL  
SENTIDO HILO

WAIST  
TAILLE  
CINTURA

1

FRONT  
DEVANT  
DELANTERO

ON THE FOLD  
DANS LA PLIURE DU TISSU  
CON CANTO DOBLADO



SEAM ALLOWANCE INCLUDED  
AVEC VALEUR DE COUTURE  
CON MARGEN DE COSTURA

5/8"  
(1,5cm)

7997

Burda  
STYLE

www.burdastyle.com

5e

LENGTHEN OR SHORTEN HERE  
RALLONGER OU RACCOURCIR ICI  
ALARGAR O ACORTAR AQUI

4e

STRAIGHT GRAIN  
DROIT FIL  
SENTIDO HILO



LENGTHEN OR SHORTEN HERE  
RALLONGER OU RACCOURCIR ICI  
ALARGAR O ACORTAR AQUI

5e

FINISHED HIP	TOUR DE HANCHES	MEASUREMENTS CADERA
32	41	105cm
34	43	109cm
36	44	112cm
38	45	116cm
40	47	119cm
42	48	123cm
44	50	127cm

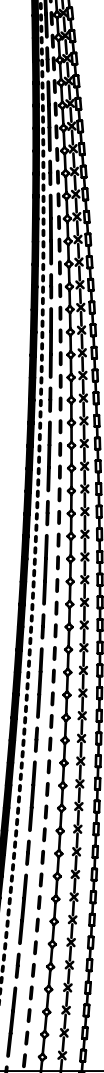
1/2"

1/4"

3/4"

1/2"

4f

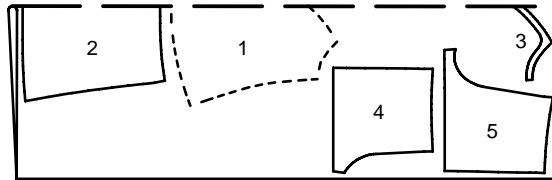


PATTERN LAYOUTS

PLANS DE COUPE

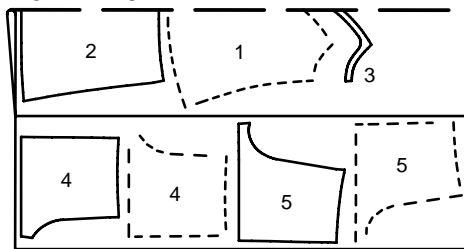
PLANOS DE CORTE

45" 114 CM



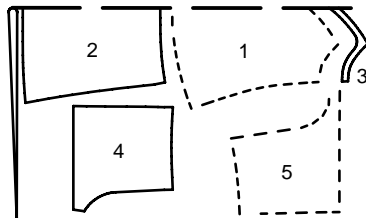
44

45" 114 CM



32-42

55" 140 CM



32-44