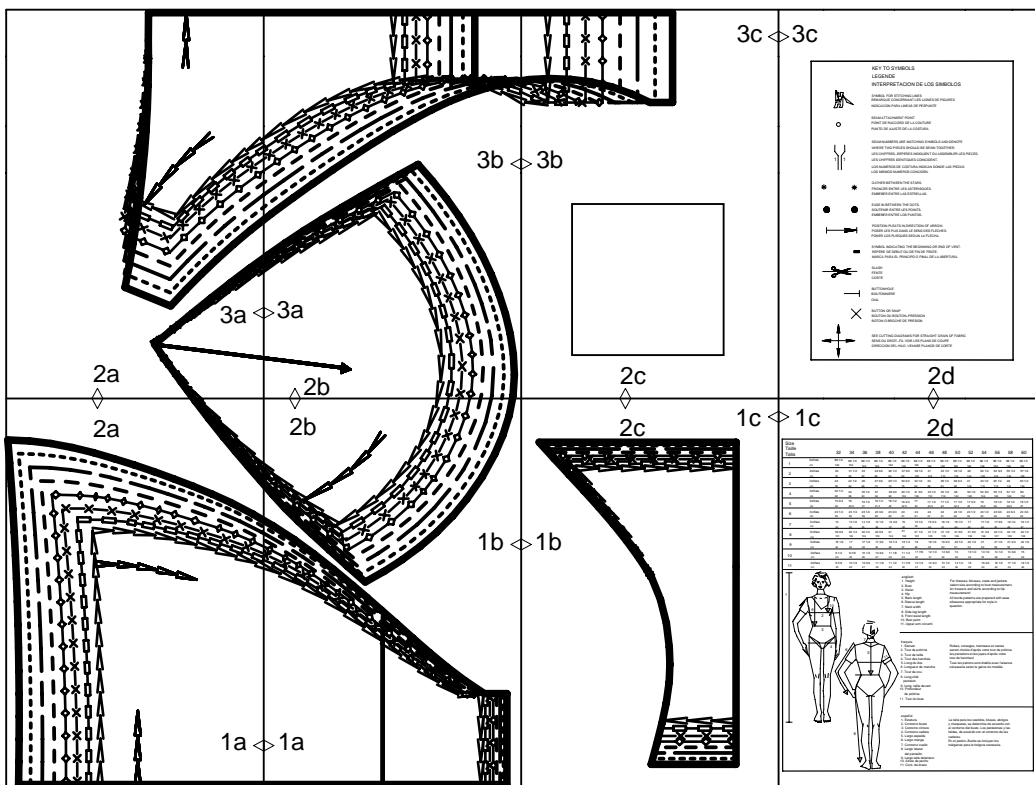
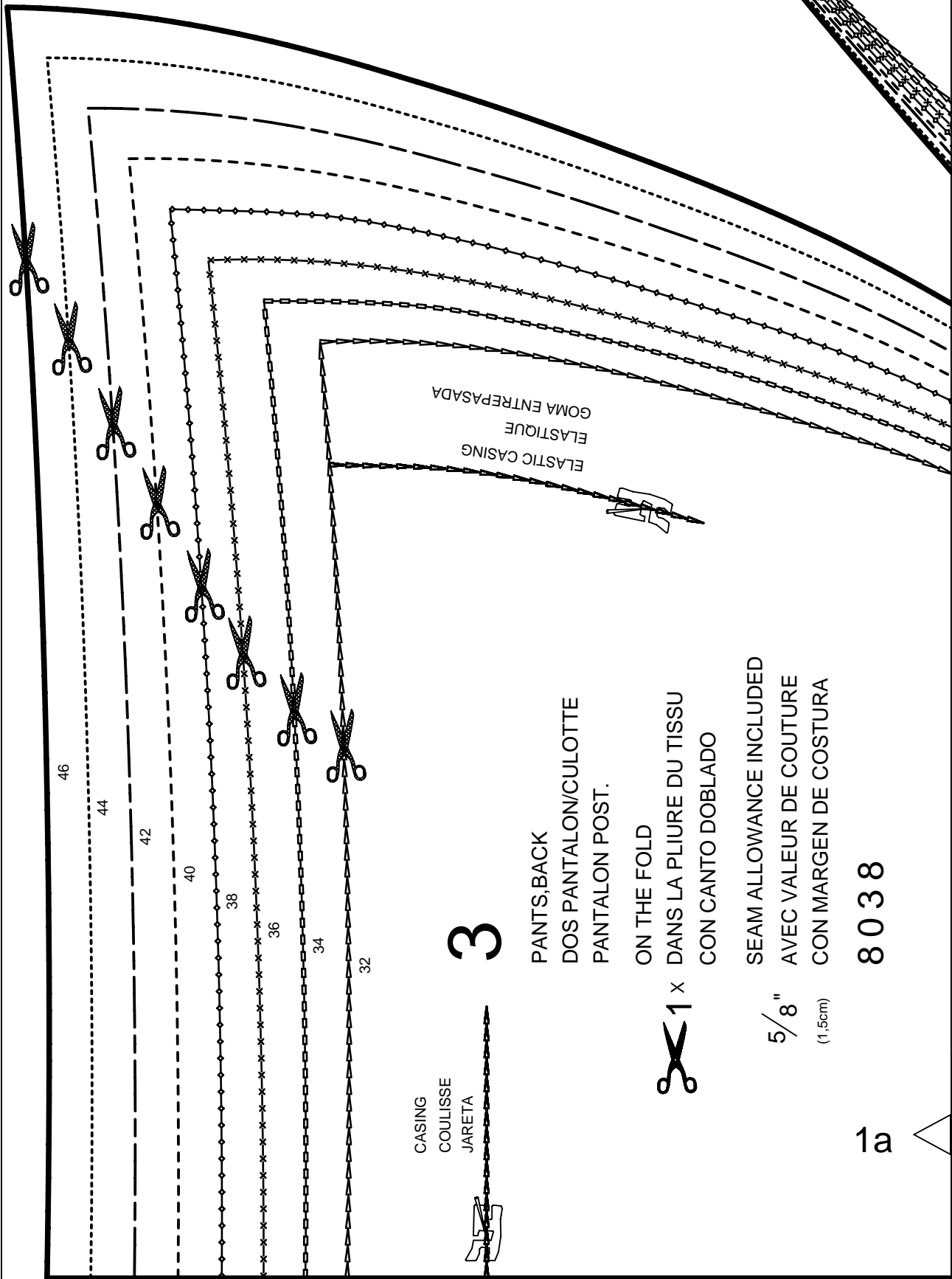


burdastyle download 8038 A

layout drawing



2a



CASING
COULISSE
JARETA

3

PANTS, BACK
DOS PANTALON/CULOTTE
PANTALON POST.

ON THE FOLD
DANS LA PLIURE DU TISSU
CON CANTO DOBLADO



SEAM ALLOWANCE INCLUDED
AVEC VALEUR DE COUTURE
CON MARGEN DE COSTURA

5/8"
(1.5cm)

8038

1a

2b

CASING
COULISSE
JARETA

1b

Burda
STYLE

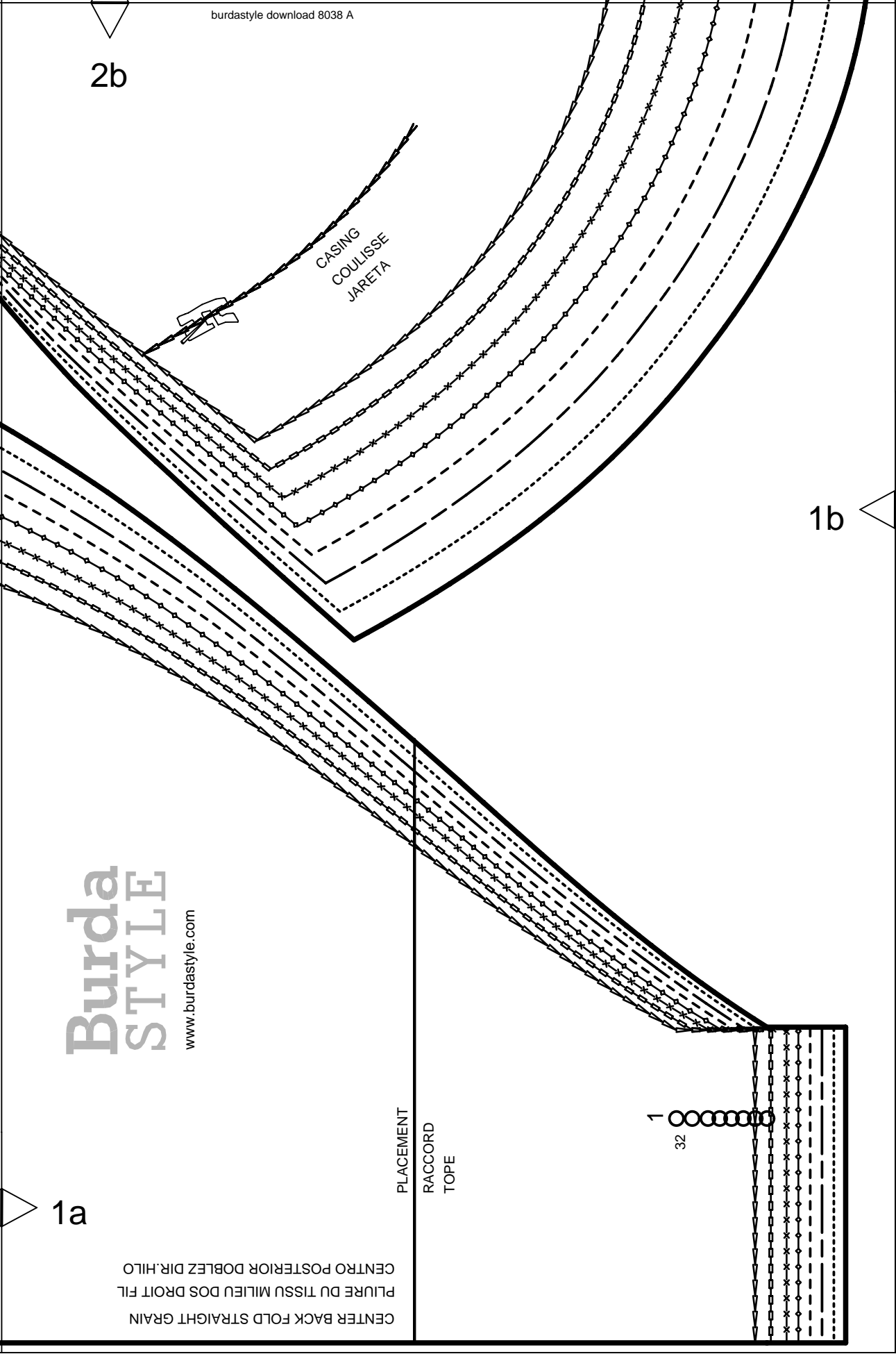
www.burdastyle.com

PLACEMENT
RACCORD
TOPE

1
32

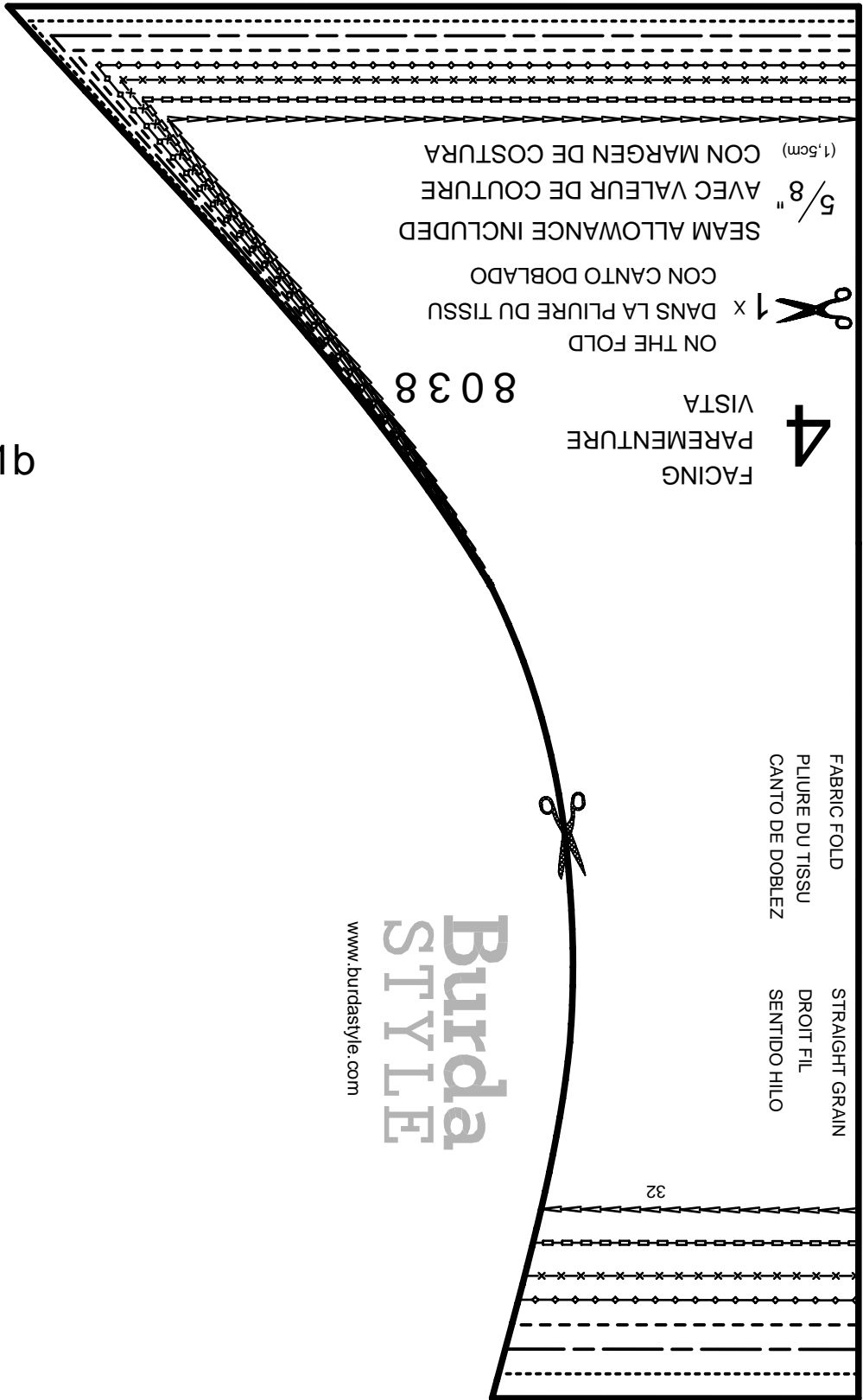
1a

CENTER BACK FOLD STRAIGHT GRAIN
PLIURE DU TISSU MILIEU DOS DROIT FIL
CENTRO POSTERIOR DOBLEZ DIR.HILO



2c

1c



SEAM ALLOWANCE INCLUDED
 5/8" AVEC VALEUR DE COUTURE
 CON MARGEN DE COSTURA (1.5cm)

ON THE FOLD
 1 x DANS LA PLIURE DU TISSU
 CON CANTO DOBLADO

8038

4
 FACING
 PAREMENTURE
 VISTA

1b

FABRIC FOLD
 PLIURE DU TISSU
 CANTO DE DOBLEZ

STRAIGHT GRAIN
 DROIT FIL
 SENTIDO HILO

32

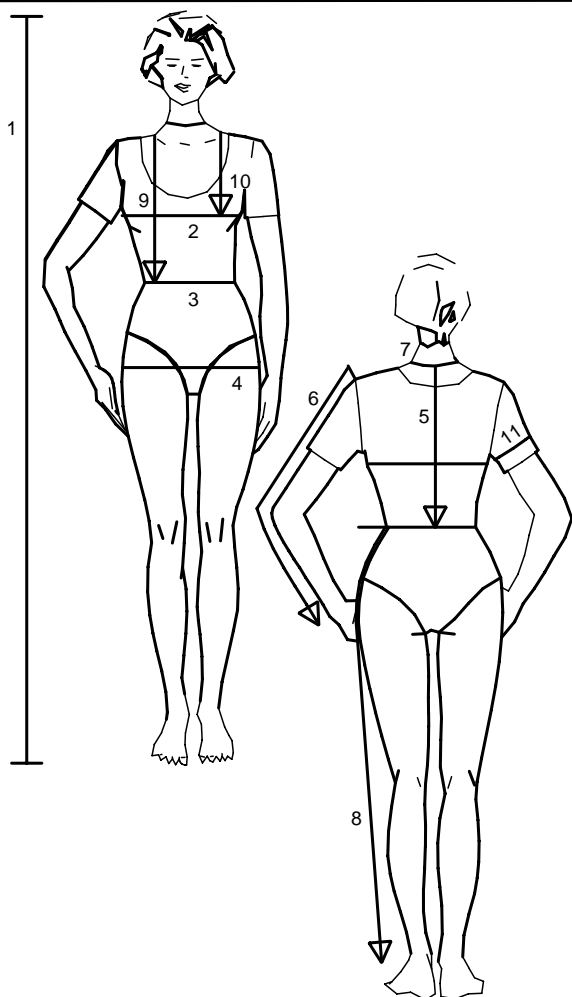
46

Burda
 STYLE
 www.burdastyle.com

2d

1c

Size Taille Talla		32	34	36	38	40	42	44	46	48	50	52	54	56	58	60
1	inches	66 1/4	66 1/4	66 1/4	66 1/4	66 1/4	66 1/4	66 1/4	66 1/4	66 1/4	66 1/4	66 1/4	66 1/4	66 1/4	66 1/4	66 1/4
	cm	168	168	168	168	168	168	168	168	168	168	168	168	168	168	168
2	inches	30	31 1/2	33	34 3/4	36 1/4	37 3/4	39 1/2	41	43 1/2	45 1/2	48	50 1/2	52 3/4	55 1/4	57 1/2
	cm	76	80	84	88	92	96	100	104	110	116	122	128	134	140	146
3	inches	23	24 1/2	26	27 3/4	29 1/4	30 3/4	32 1/2	34	36 1/4	38 3/4	41	43 1/2	45 1/2	48	50 1/2
	cm	58	62	66	70	74	78	82	86	92	98	104	110	116	122	128
4	inches	32 1/2	34	35 1/2	37	38 3/4	40 1/4	41 3/4	43 1/2	45 1/2	48	50 1/2	52 3/4	55 1/4	57 1/2	60
	cm	82	86	90	94	98	102	106	110	116	122	128	134	140	146	152
5	inches	15 3/4	16	16 1/4	16 1/2	16 1/2	16 3/4	17	17 1/4	17 1/4	17 1/2	17 3/4	18	18 1/4	18 1/2	18 1/2
	cm	40	40.5	41	41.5	42	42.5	43	43.5	44	44.5	45	45.5	46	46.5	47
6	inches	23 1/4	23 1/4	23 1/4	23 3/4	23 3/4	24	24	24	24	24 1/2	24 1/2	24 1/2	24 3/4	24 3/4	24 3/4
	cm	59	59	59	60	60	61	61	61	61	62	62	62	63	63	63
7	inches	13	13 1/2	14 1/4	14 1/2	14 3/4	15	15 1/2	15 3/4	16 1/4	16 1/2	17	17 1/4	17 3/4	18 1/4	18 1/2
	cm	33	34	35	36	37	38	39	40	41	42	43	44	45	46	47
8	inches	39 3/4	40 1/4	40 1/4	40 3/4	41	41	41 1/2	41 1/2	41 1/2	41 3/4	41 3/4	41 3/4	42 1/4	42 1/2	42 1/2
	cm	101	102	102	103	104	104	105	105	105	106	106	106	107	108	108
9	inches	16 1/2	17	17 1/4	17 3/4	18 1/4	18 1/2	19	19 1/4	19 3/4	20 1/4	20 1/2	21	21 1/4	21 3/4	22 1/4
	cm	42	43	44	45	46	47	48	49	50	51	52	53	54	55	56
10	inches	9 1/2	9 7/8	10 1/4	10 3/4	11 1/8	11 1/2	11 7/8	12 1/4	12 3/4	13	13 1/2	14 1/4	14 1/2	14 3/4	15
	cm	24	25	26	27	28	29	30	31	32	33	34	35	36	37	38
11	inches	9 7/8	10 1/4	10 3/4	11 1/8	11 1/2	11 7/8	12 1/4	12 3/4	13 1/2	14 1/2	15	15 3/4	16 1/2	17 1/4	18 1/4
	cm	25	26	27	28	29	30	31	32	34	36	38	40	42	44	46



englisch

1. Height
2. Bust
3. Waist
4. Hip
5. Back length
6. Sleeve length
7. Neck width
8. Side leg length
9. Front waist length
10. Bust point
11. Upper arm circumf.

For dresses, blouses, coats and jackets select size according to bust measurement, for trousers and skirts according to hip measurement!

All burda patterns are prepared with ease allowance appropriate for style in question.

français

1. Stature
2. Tour de poitrine
3. Tour de taille
4. Tour des hanches
5. Long. du dos
6. Longueur de manche
7. Tour de cou
8. Long. côté pantalon
9. Long. taille devant
10. Profondeur de poitrine
11. Tour du bras

Robes, corsages, manteaux et vestes seront choisis d'après votre tour de poitrine les pantalons et les jupes d'après votre tour de hanches!

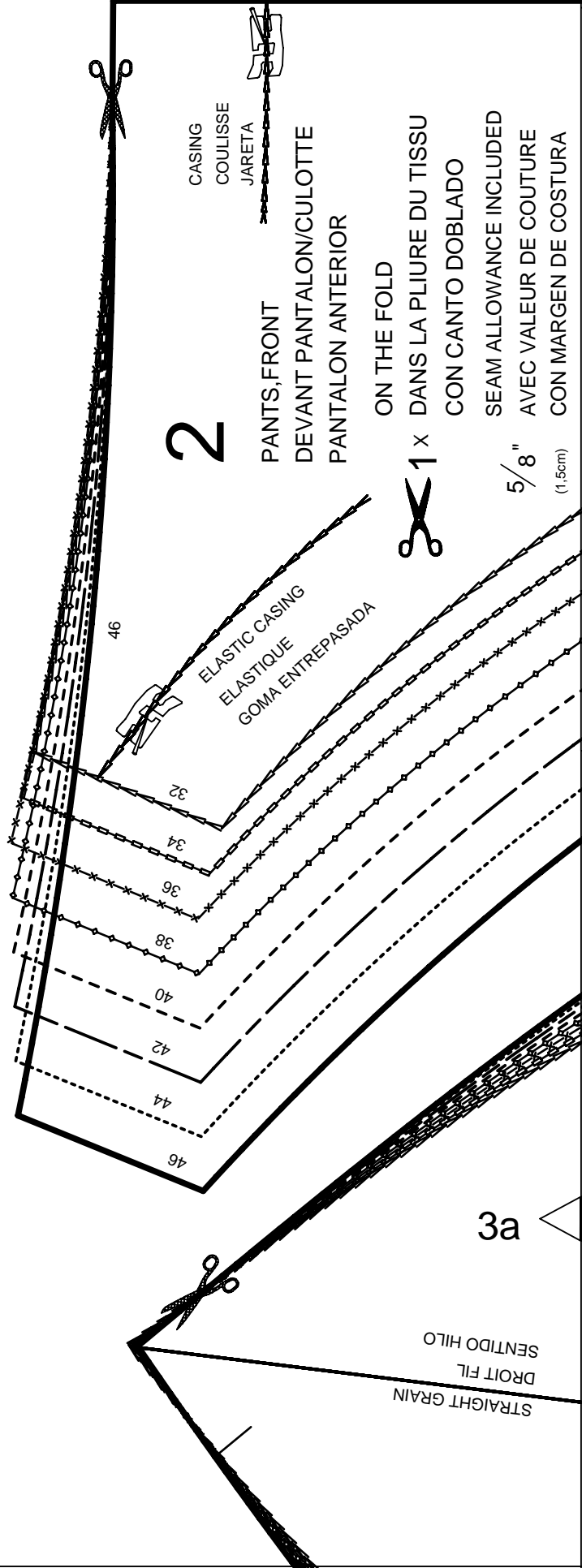
Tous les patrons sont établis avec l'aisance nécessaire selon le genre du modèle.

español

1. Estatura
2. Contorno busto
3. Contorno cintura
4. Contorno cadera
5. Largo espalda
6. Largo manga
7. Contorno cuello
8. Largo lateral del pantalón
9. Largo talle delantero
10. Altura de pecho
11. Cont. de brazo

La talla para los vestidos, blusas, abrigos y chaquetas, se determina de acuerdo con el contorno del busto. Los pantalones y las faldas, de acuerdo con el contorno de las caderas.

En el patrón-Burda se incluyen los márgenes para la holgura necesaria.



CASING
COULISSE
JARETA

PANTS, FRONT
DEVANT PANTALON/CULOTTE
PANTALON ANTERIOR

ON THE FOLD
DANS LA PLIURE DU TISSU
CON CANTO DOBLADO
SEAM ALLOWANCE INCLUDED
AVEC VALEUR DE COUTURE
CON MARGEN DE COSTURA

5/8" (1.5cm)

2

1

3a

STRAIGHT GRAIN
DROIT FIL
SENTIDO HILLO

2a

46

32

34

36

38

40

42

44

46

8038

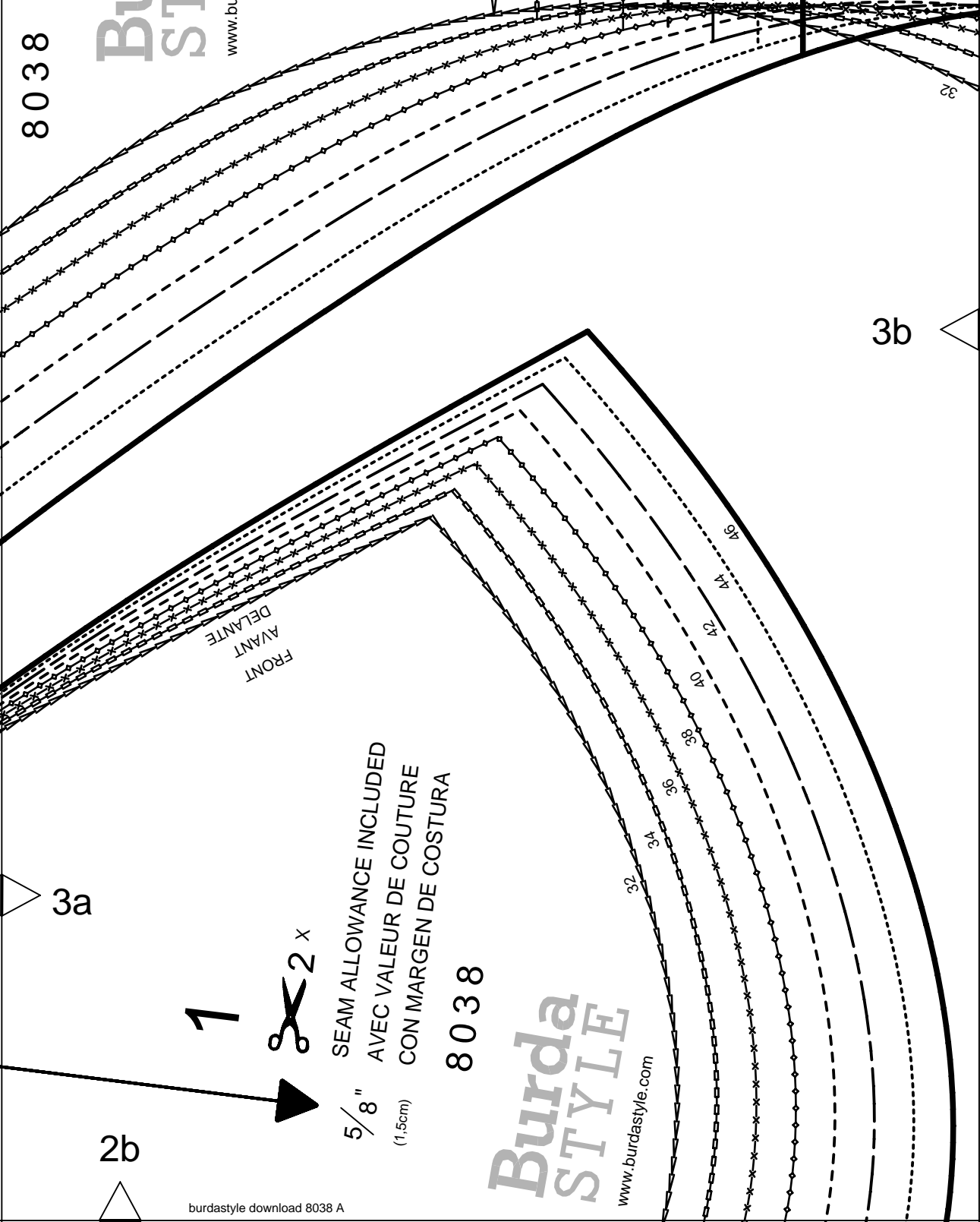
Burda
STYLE

www.burdastyle.com

CENTRO ANTERIOR CANTO DE DOBLEZ
PLIURE DU TISSU MILIEU DEVANT
CENTER FRONT FOLD

PLACEMENT
RACCORD
TOPE

STRAIGHT GRAIN
DROIT FIL
SENTIDO HILLO



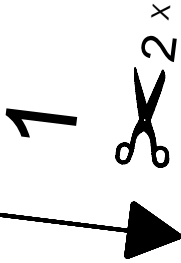
FRONT
AVANT
DELANT

SEAM ALLOWANCE INCLUDED
AVEC VALEUR DE COUTURE
CON MARGEN DE COSTURA

8038

Burda
STYLE

www.burdastyle.com

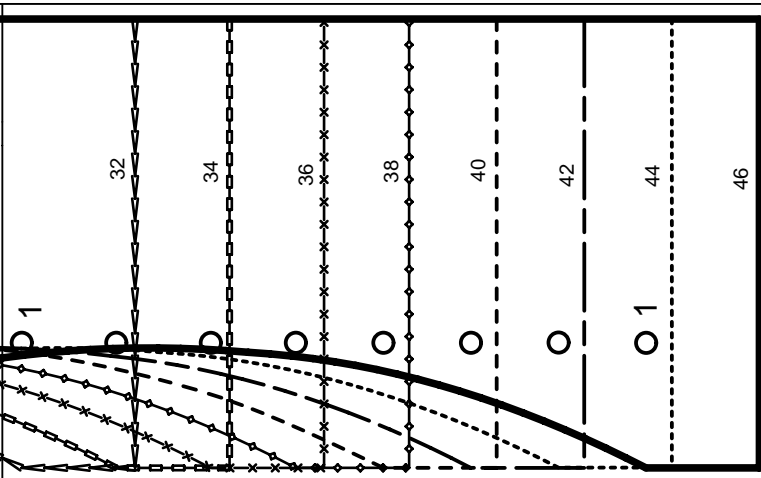


5/8"
(1.5cm)

3a

3b

2b



3c

3b

Burda
STYLE

www.burdastyle.com

test square

side length

4 inches (10 cm)

2c

KEY TO SYMBOLS

LEGENDE

INTERPRETACION DE LOS SIMBOLOS



SYMBOL FOR STITCHING LINES
REMARQUE CONCERNANT LES LIGNES DE PIQURES
INDICACION PARA LINEAS DE PESPUNTE



SEAM ATTACHMENT POINT
POINT DE RACCORD DE LA COUTURE
PUNTO DE AJUSTE DE LA COSTURA



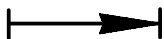
SEAM NUMBERS ARE MATCHING SYMBOLS AND DENOTE
WHERE TWO PIECES SHOULD BE SEWN TOGETHER.
LES CHIFFRES-REPERES INDIQUENT OU ASSEMBLER LES PIECES.
LES CHIFFRES IDENTIQUES COINCIDENT.
LOS NUMEROS DE COSTURA INDICAN DONDE LAS PIEZAS.
LOS MISMOS NUMEROS CONCIDEN.



GATHER BETWEEN THE STARS.
FRONCER ENTRE LES ASTERISQUES.
EMBEBER ENTRE LAS ESTRELLAS.



EASE IN BETWEEN THE DOTS.
SOUTENIR ENTRE LES POINTS.
EMBEBER ENTRE LOS PUNTOS.



POSITION PLEATS IN DIRECTION OF ARROW.
POSER LES PLIS DANS LE SENS DES FLECHES.
PONER LOS PLIEQUES SEGUN LA FLECHA.



SYMBOL INDICATING THE BEGINNING OR END OF VENT.
REPERE DE DEBUT OU DE FIN DE FENTE.
MARCA PARA EL PRINCIPIO O FINAL DE LA ABERTURA.



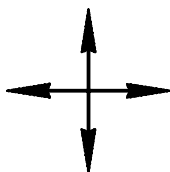
SLASH
FENTE
CORTE



BUTTONHOLE
BOUTONNIERE
OIAL



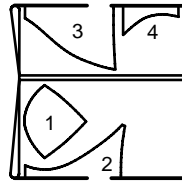
BUTTON OR SNAP
BOUTON OU BOUTON-PRESSION
BOTON O BROCHE DE PRESION



SEE CUTTING DIAGRAMS FOR STRAIGHT GRAIN OF FABRIC
SENS DU DROIT-FIL VOIR LES PLANS DE COUPE
DIRECCION DEL HILO, VEANSE PLANOS DE CORTE

PATTERN LAYOUT
PLAN DE COUPE
PLANO DE CORTE

45" 114 CM
55" 140 CM



32-46