

3

FRONT
DEVANT
DELANTERO

ON THE FOLD



1 X
DANS LA PLIURE DU TISSU
CON CANTO DOBLADO

5/8"

(1.5cm)

SEAM ALLOWANCE INCLUDED
AVEC VALEUR DE COUTURE
CON MARGEN DE COSTURA

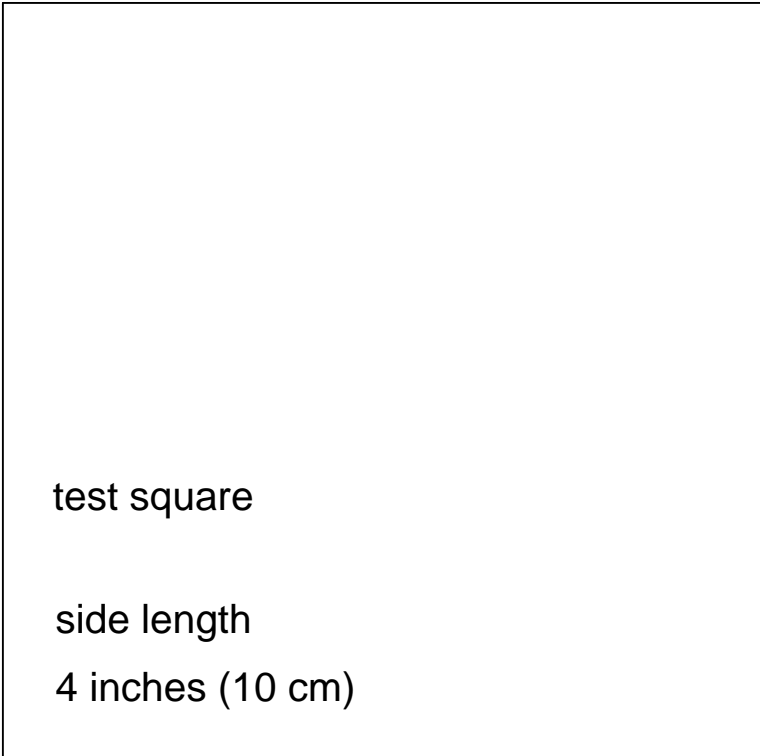
8043

2a



Burda STYLE

www.burdastyle.com



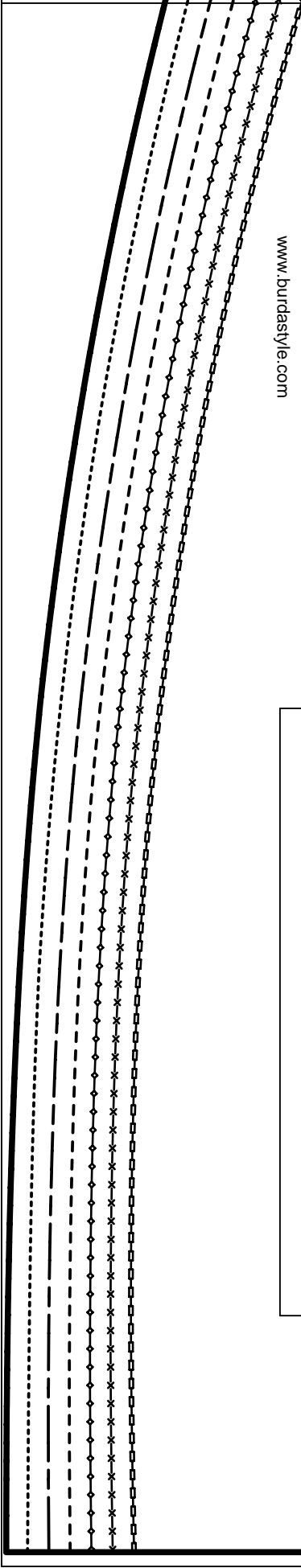
test square

side length

4 inches (10 cm)

CENTER FRONT FOLD, STRAIGHT GRAIN
MILIEU DEVANT PLIURE, DROIT FIL
MEDIO DELANTERO DOBLEZ SENT.HILO

1a



2b

KEY TO SYMBOLS
 LEGENDE
 INTERPRETACION DE LOS SIMBOLOS



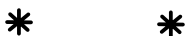
SYMBOL FOR STITCHING LINES
 REMARQUE CONCERNANT LES LIGNES DE PIQUES
 INDICACION PARA LINEAS DE PESPUNTE



SEAM ATTACHMENT POINT
 POINT DE RACCORD DE LA COUTURE
 PUNTO DE AJUSTE DE LA COSTURA



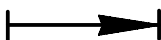
SEAM NUMBERS ARE MATCHING SYMBOLS AND DENOTE
 WHERE TWO PIECES SHOULD BE SEWN TOGETHER.
 LES CHIFFRES-REPERES INDIQUENT OU ASSEMBLER LES PIECES.
 LES CHIFFRES IDENTIQUES COINCIDENT.
 LOS NUMEROS DE COSTURA INDICAN DONDE LAS PIEZAS.
 LOS MISMOS NUMEROS CONCIDEN.



GATHER BETWEEN THE STARS.
 FRONCER ENTRE LES ASTERISQUES.
 EMBEBER ENTRE LAS ESTRELLAS.



EASE IN BETWEEN THE DOTS.
 SOUTENIR ENTRE LES POINTS.
 EMBEBER ENTRE LOS PUNTOS.



POSITION PLEATS IN DIRECTION OF ARROW.
 POSER LES PLIS DANS LE SENS DES FLECHES.
 PONER LOS PLIEQUES SEGUN LA FLECHA.



SYMBOL INDICATING THE BEGINNING OR END OF VENT.
 REPERE DE DEBUT OU DE FIN DE FENTE.
 MARCA PARA EL PRINCIPIO O FINAL DE LA ABERTURA.



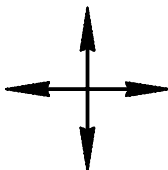
SLASH
 FENTE
 CORTE



BUTTONHOLE
 BOUTONNIERE
 OIAL



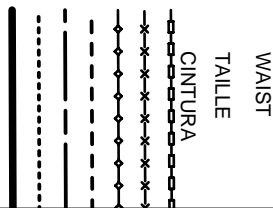
BUTTON OR SNAP
 BOUTON OU BOUTON-PRESSION
 BOTON O BROCHE DE PRESSION



SEE CUTTING DIAGRAMS FOR STRAIGHT GRAIN OF FABRIC
 SENS DU DROIT-FIL VOIR LES PLANS DE COUPE
 DIRECCION DEL HILO, VEANSE PLANOS DE CORTE

LENGTHEN OR SHORTEN HERE
 RALLONGER OU RACCOURCIR ICI
 ALARGAR O ACORTAR AQUI

1a



1b

2d

GATHER
FRONCER

8043

5/8" (1.5cm)



SEAM ALLOWANCE INCLUDED
AVEC VALEUR DE COUTURE
CON MARGEN DE COSTURA

UPPER FRONT
DELANTERO SUPERIOR
DEVANT

1c

SIZE	FINISHED BUST	TOUR DE POUTRINE	BUSTO	CONTORNO BUSTO
32	31	32	31	32
34	34	34	34	34
36	36	36	36	36
38	38	38	38	38
40	40	40	40	40
42	42	42	42	42
44	44	44	44	44

32

34

36

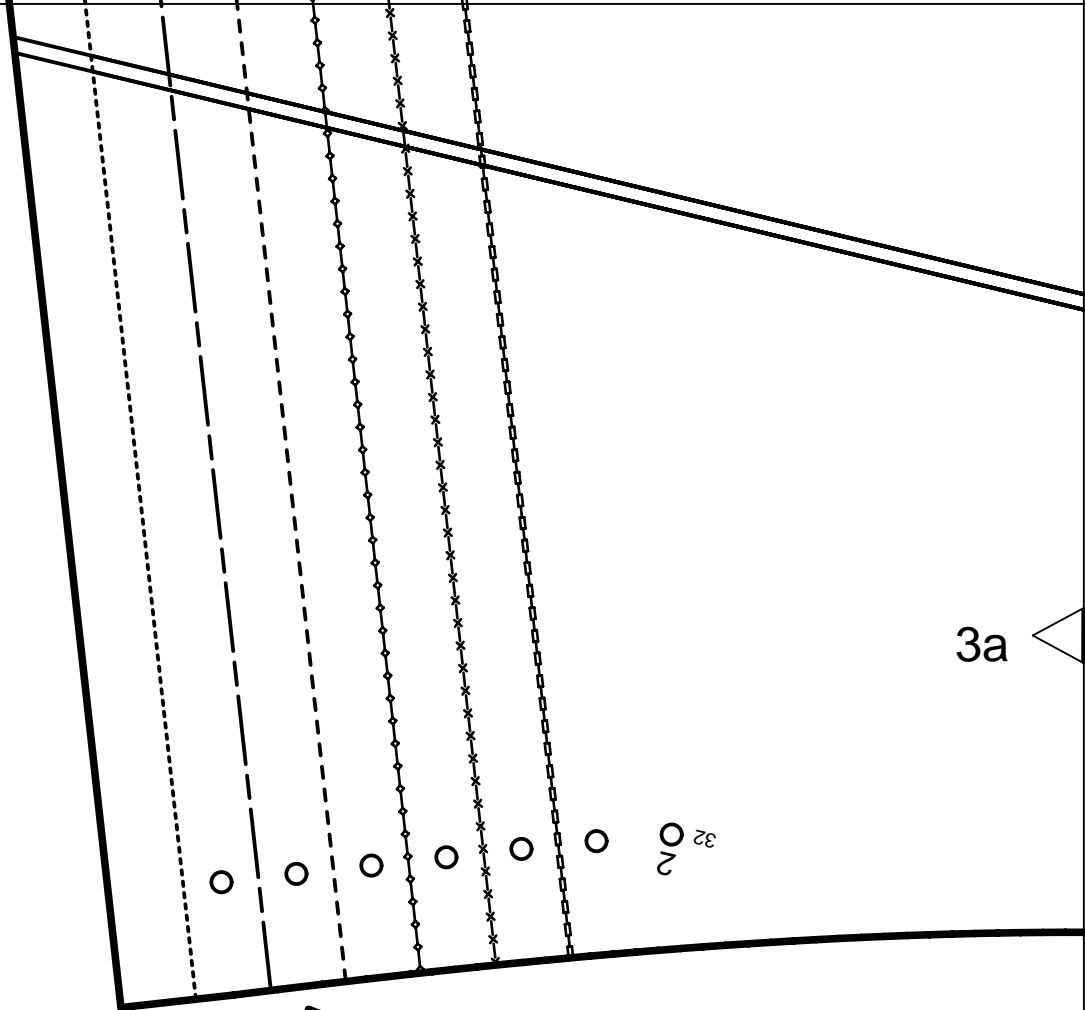
38

40

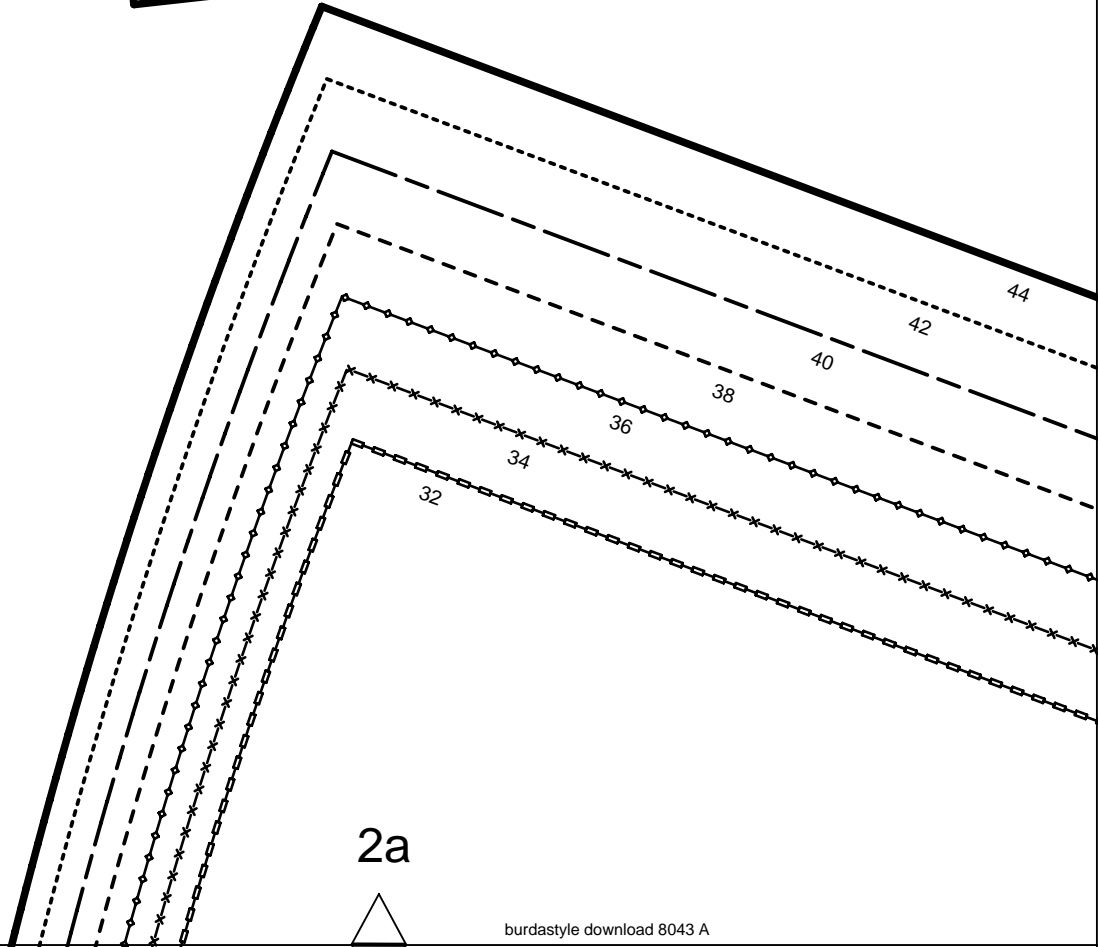
42

44

4a



3a



2a

WAIST
TAILLE
CINTURA

4b

LENGTHEN OR SHORTEN HERE
RALLONGER OU RACCOURCIR ICI
ALARGAR O ACORTAR AQUI

3a



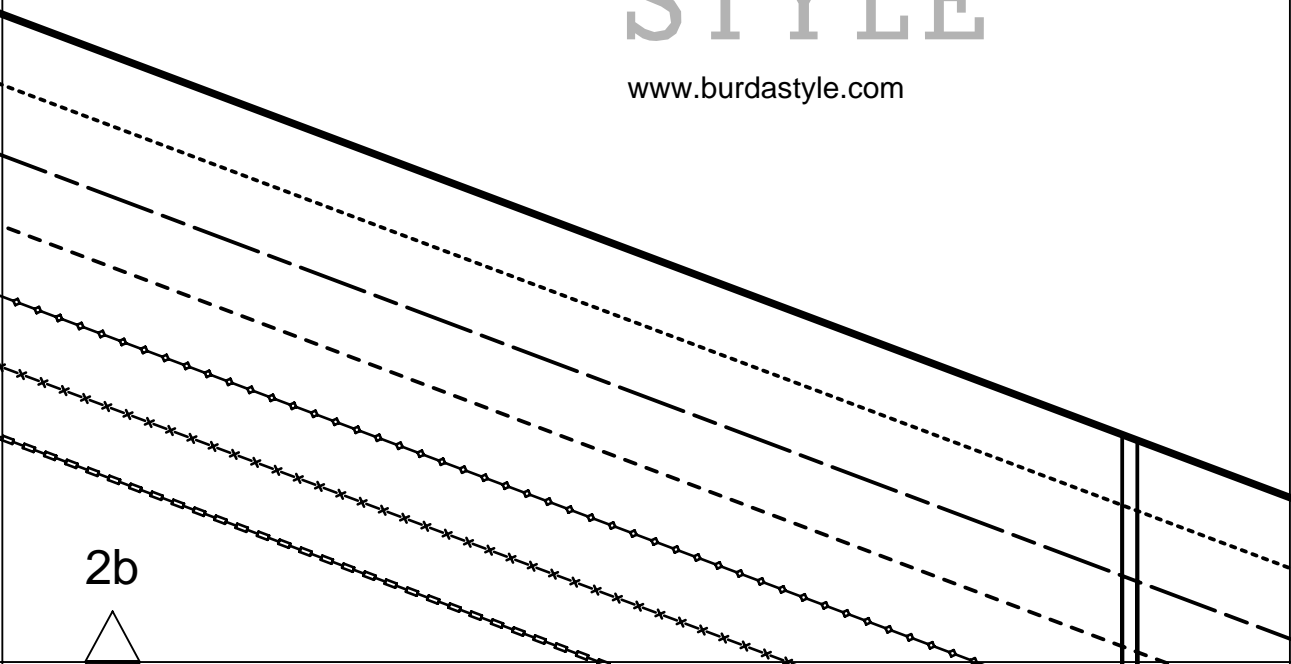
ELASTIC CASING
ELASTIQUE
GOMA ENTREPASADA

3b

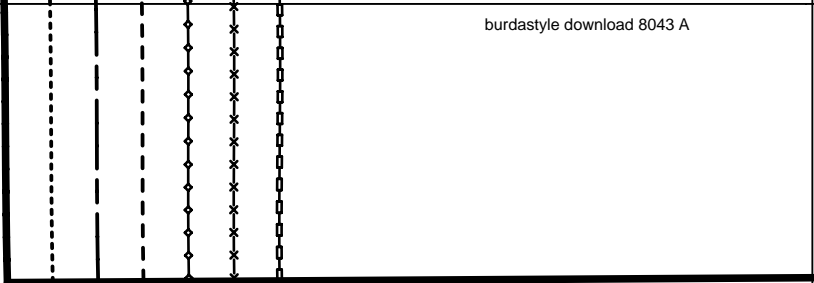
Burda
STYLE

www.burdastyle.com

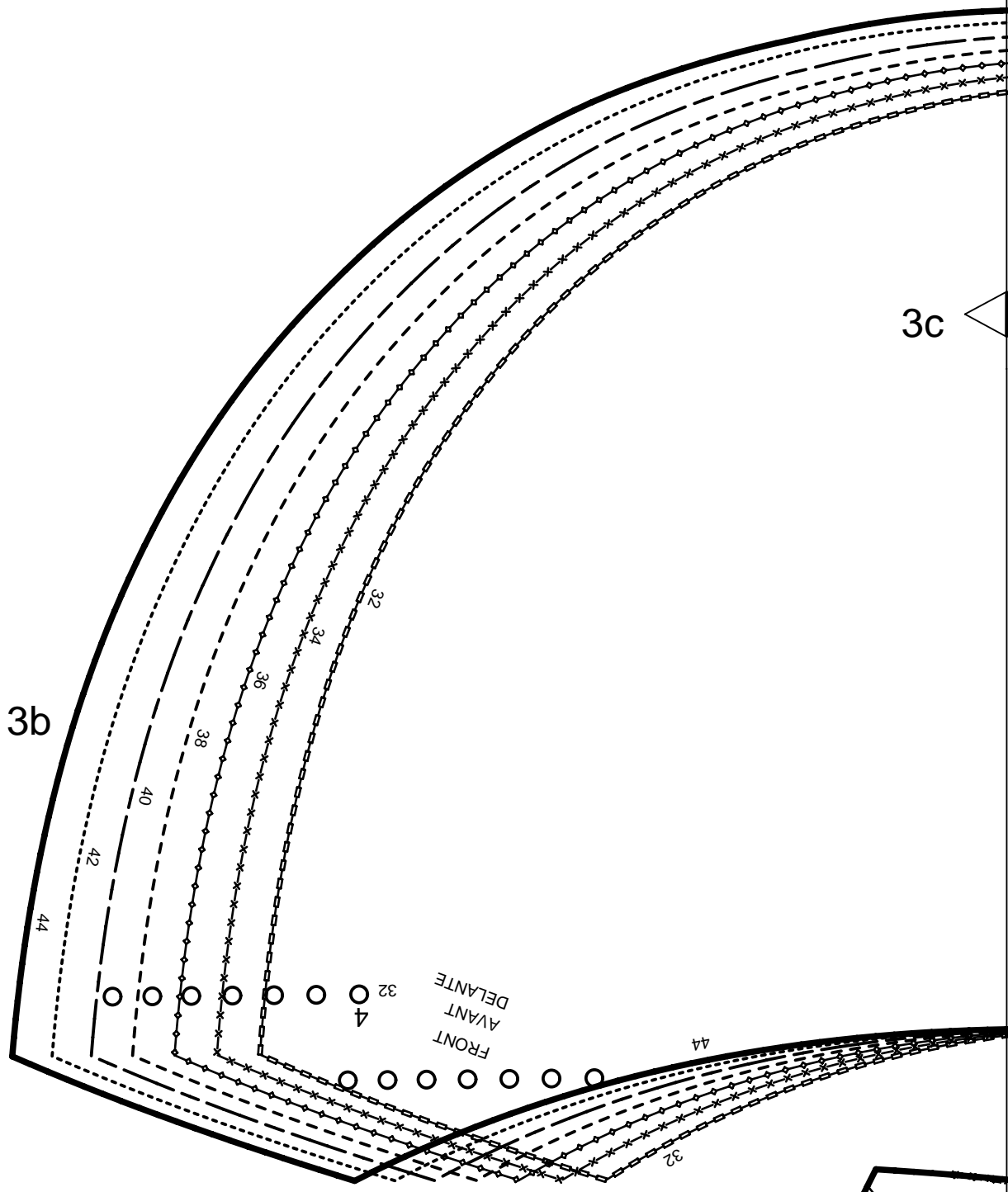
2b



4c



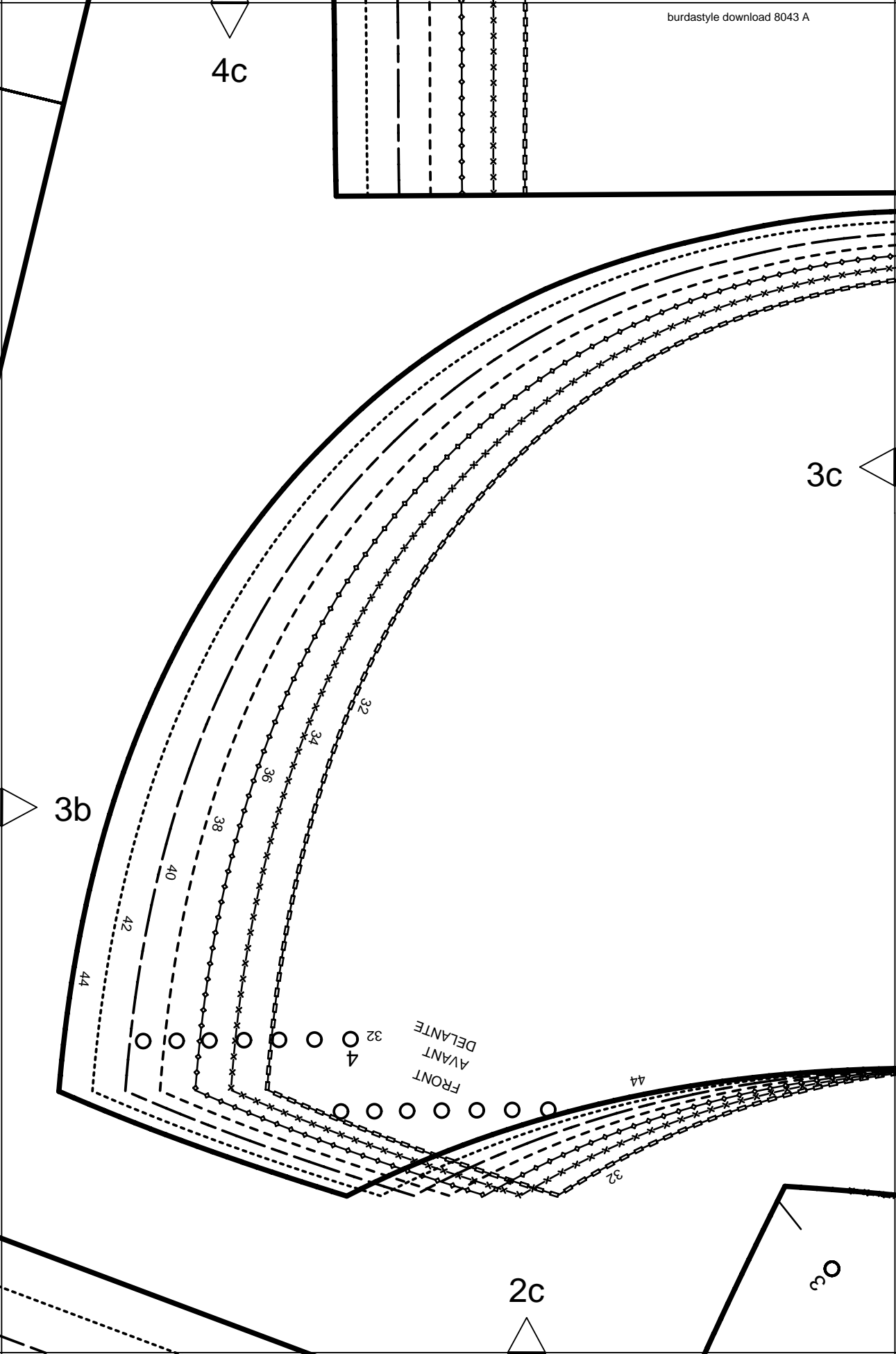
3c



3b

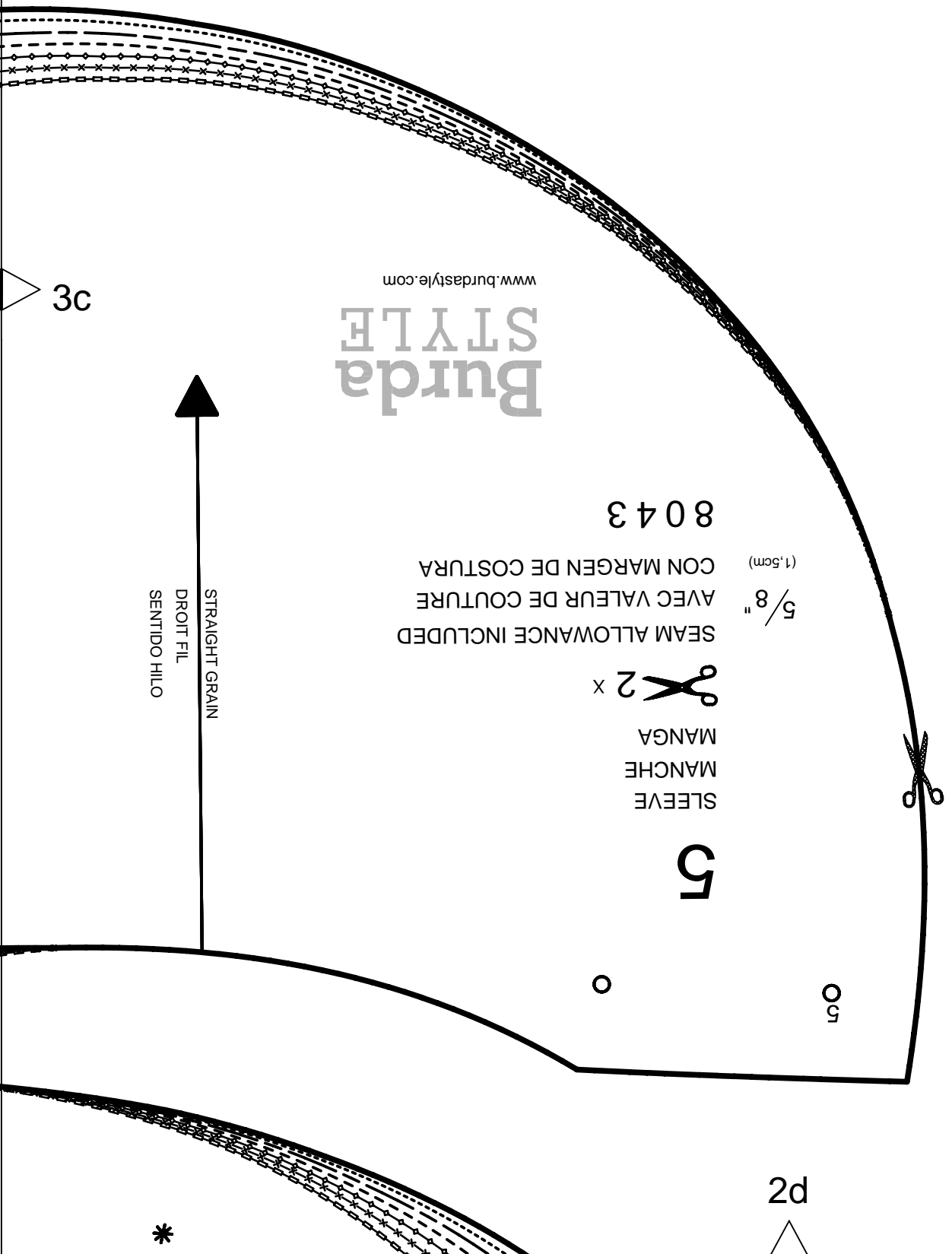
2c

3c



4d

CENTER BACK FOLD STRAIGHT GRAIN
PLIURE DU TISSU MILIEU DOS DROIT FIL
CENTRO POSTERIOR DOBLEZ DIR.HILO



www.burdastyle.com

Burda
STYLE

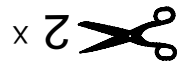
3c

8043

SEAM ALLOWANCE INCLUDED
AVEC VALEUR DE COUTURE
CON MARGEN DE COSTURA

5/8" (1.5cm)

STRAIGHT GRAIN
DROIT FIL
SENTIDO HILO



SLEEVE
MANCHE
MANGA

5

5

2d



8043

(1,5cm)

5/8"

SEAM ALLOWANCE INCLUDED
CON MARGEN DE COSTURA

ON THE FOLD
DANS LA PLIURE DU TISSU

CON CANTO DOBLADO

ON THE FOLD



ESPALDA

DOS

BACK



www.burdastyle.com

Burda
STYLE

32

34

36

38

40

42

44

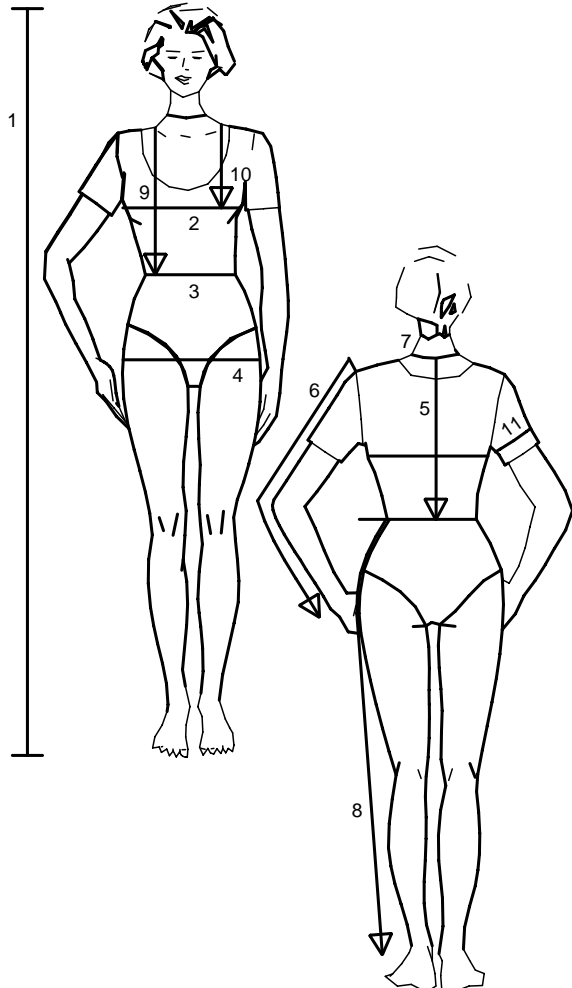
4a



5a



Size Taille Talla		32	34	36	38	40	42	44	46	48	50	52	54	56	58	60
1	inches	66 1/4	66 1/4	66 1/4	66 1/4	66 1/4	66 1/4	66 1/4	66 1/4	66 1/4	66 1/4	66 1/4	66 1/4	66 1/4	66 1/4	66 1/4
	cm	168	168	168	168	168	168	168	168	168	168	168	168	168	168	168
2	inches	30	31 1/2	33	34 3/4	36 1/4	37 3/4	39 1/2	41	43 1/2	45 1/2	48	50 1/2	52 3/4	55 1/4	57 1/2
	cm	76	80	84	88	92	96	100	104	110	116	122	128	134	140	146
3	inches	23	24 1/2	26	27 3/4	29 1/4	30 3/4	32 1/2	34	36 1/4	38 3/4	41	43 1/2	45 1/2	48	50 1/2
	cm	58	62	66	70	74	78	82	86	92	98	104	110	116	122	128
4	inches	32 1/2	34	35 1/2	37	38 3/4	40 1/4	41 3/4	43 1/2	45 1/2	48	50 1/2	52 3/4	55 1/4	57 1/2	60
	cm	82	86	90	94	98	102	106	110	116	122	128	134	140	146	152
5	inches	15 3/4	16	16 1/4	16 1/2	16 1/2	16 3/4	17	17 1/4	17 1/4	17 1/2	17 3/4	18	18 1/4	18 1/2	18 1/2
	cm	40	40,5	41	41,5	42	42,5	43	43,5	44	44,5	45	45,5	46	46,5	47
6	inches	23 1/4	23 1/4	23 1/4	23 3/4	23 3/4	24	24	24	24	24 1/2	24 1/2	24 1/2	24 3/4	24 3/4	24 3/4
	cm	59	59	59	60	60	61	61	61	61	62	62	62	63	63	63
7	inches	13	13 1/2	14 1/4	14 1/2	14 3/4	15	15 1/2	15 3/4	16 1/4	16 1/2	17	17 1/4	17 3/4	18 1/4	18 1/2
	cm	33	34	35	36	37	38	39	40	41	42	43	44	45	46	47
8	inches	39 3/4	40 1/4	40 1/4	40 3/4	41	41	41 1/2	41 1/2	41 1/2	41 3/4	41 3/4	41 3/4	42 1/4	42 1/2	42 1/2
	cm	101	102	102	103	104	104	105	105	105	106	106	106	107	108	108
9	inches	16 1/2	17	17 1/4	17 3/4	18 1/4	18 1/2	19	19 1/4	19 3/4	20 1/4	20 1/2	21	21 1/4	21 3/4	22 1/4
	cm	42	43	44	45	46	47	48	49	50	51	52	53	54	55	56
10	inches	9 1/2	9 7/8	10 1/4	10 3/4	11 1/8	11 1/2	11 7/8	12 1/4	12 3/4	13	13 1/2	14 1/4	14 1/2	14 3/4	15
	cm	24	25	26	27	28	29	30	31	32	33	34	35	36	37	38
11	inches	9 7/8	10 1/4	10 3/4	11 1/8	11 1/2	11 7/8	12 1/4	12 3/4	13 1/2	14 1/2	15	15 3/4	16 1/2	17 1/4	18 1/4
	cm	25	26	27	28	29	30	31	32	34	36	38	40	42	44	46



englisch

1. Height
2. Bust
3. Waist
4. Hip
5. Back length
6. Sleeve length
7. Neck width
8. Side leg length
9. Front waist length
10. Bust point
11. Upper arm circumf.

For dresses, blouses, coats and jackets select size according to bust measurement, for trousers and skirts according to hip measurement!
All burda patterns are prepared with ease allowance appropriate for style in question.

français

1. Stature
2. Tour de poitrine
3. Tour de taille
4. Tour des hanches
5. Long. du dos
6. Longueur de manche
7. Tour de cou
8. Long. côté pantalon
9. Long. taille devant
10. Profondeur de poitrine
11. Tour du bras

Robes, corsages, manteaux et vestes seront choisis d'après votre tour de poitrine les pantalons et les jupes d'après votre tour de hanches!
Tous les patrons sont établis avec l'aisance nécessaire selon le genre du modèle.

español

1. Estatura
2. Contorno busto
3. Contorno cintura
4. Contorno cadera
5. Largo espalda
6. Largo manga
7. Contorno cuello
8. Largo lateral del pantalón
9. Largo talle delantero
10. Altura de pecho
11. Cont. de brazo

La talla para los vestidos, blusas, abrigos y chaquetas, se determina de acuerdo con el contorno del busto. Los pantalones y las faldas, de acuerdo con el contorno de las caderas.
En el patrón-Burda se incluyen los márgenes para la holgura necesaria.

5b

CENTER BACK FOLD STRAIGHT GRAIN
PLIURE DU TISSU MILIEU DOS DROIT FIL
CENTRO POSTERIOR DOBLEZ DIR:HILO

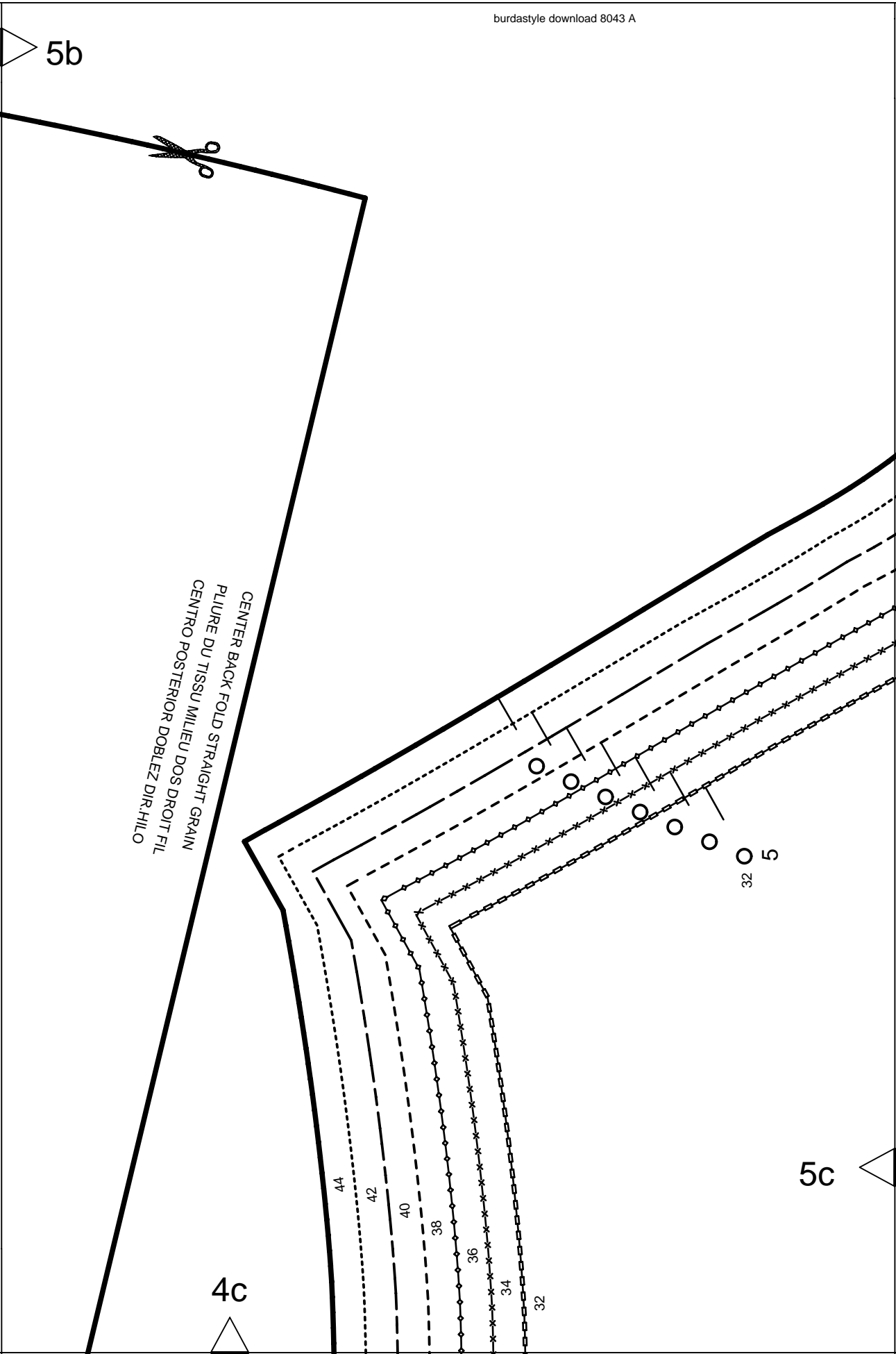


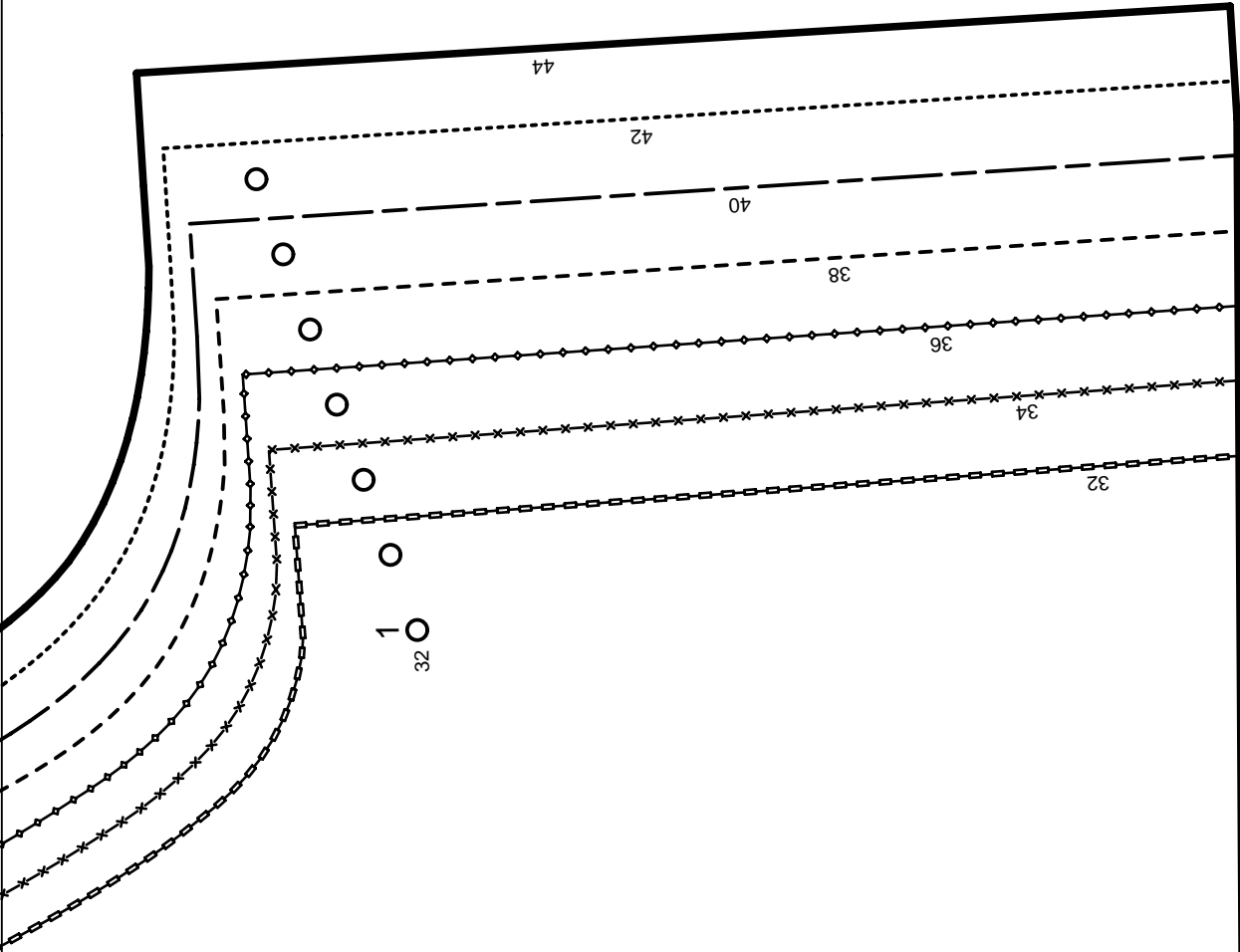
4c

44
42
40
38
36
34
32

5c

32 5





2

UPPER BACK
PIECE SUPERIEURE DOS
ESPALDA SUPERIOR

ON THE FOLD

DANS LA PLIURE DU TISSU
CON CANTO DOBLADO



SEAM ALLOWANCE INCLUDED
AVEC VALEUR DE COUTURE
CON MARGEN DE COSTURA

5/8"
(1,5cm)

8043

Burda
STYLE

www.burdastyle.com

4d

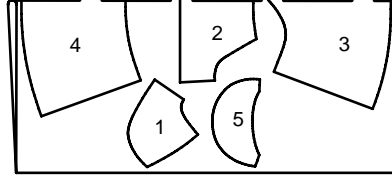


5c



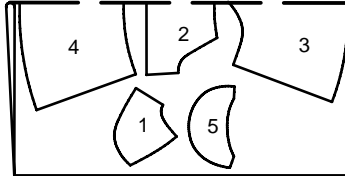
PATTERN LAYOUTS
PLANS DE COUPE
PLANOS DE CORTE

45" 114 CM



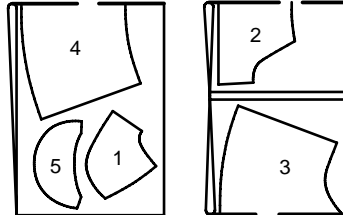
40-44

45" 114 CM



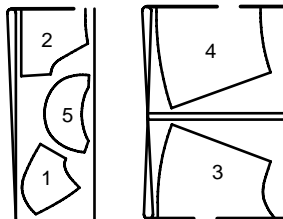
32-38

55" 140 CM



36-44

55" 140 CM



32+34