



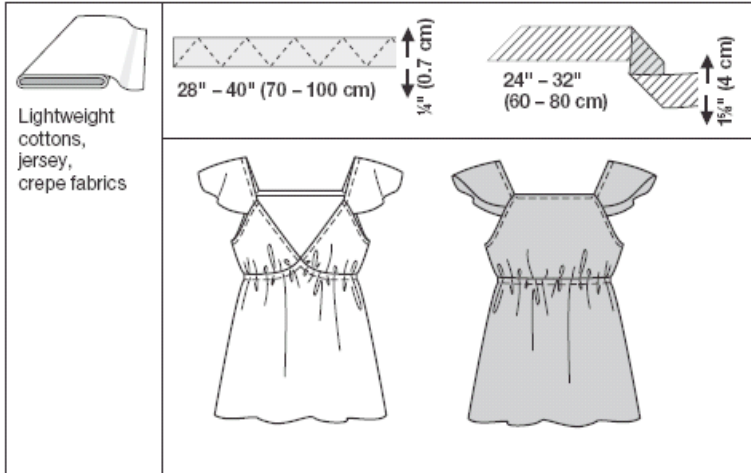
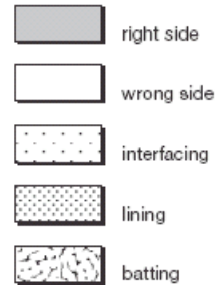
easy

fitted

| burda sizes | 45 ins / 114 cm | | | | | | | | 55 ins / 140 cm | | | | | | | |
|-------------|-----------------|-------|-------|-------|-------|-------|-------|------|-----------------|------|------|------|-------|-------|--|--|
| | 32 | 34 | 36 | 38 | 40 | 42 | 44 | 32 | 34 | 36 | 38 | 40 | 42 | 44 | | |
| yards | 1 1/8 | 1 1/8 | 1 1/8 | 1 1/8 | 1 1/2 | 1 1/2 | 1 1/2 | 7/8 | 7/8 | 1 | 1 | 1 | 1 1/8 | 1 1/8 | | |
| m | 1.15 | 1.15 | 1.15 | 1.15 | 1.25 | 1.30 | 1.30 | 0.75 | 0.75 | 0.90 | 0.90 | 0.90 | 0.95 | 0.95 | | |
| | * | * | * | * | * | * | * | → | → | → | → | → | → | → | | |

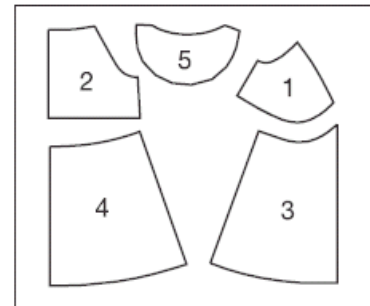
→ with nap

* without nap



Lightweight
cottons,
jersey,
crepe fabrics

Patternpieces:



your size at the lines marked "lengthen or shorten here".
Thus the fit is preserved.

PATTERN

1 Upper front 2x

2 Upper back 1x

3 Front 1x

4 Back 1x

5 Sleeve 2x

Paper cut for ANSI A (German DIN A4) prints:

The patterns are printed out on 12 sheets with a thin frame. Wait, until all sheets are printed out. Arrange the sheets so that they fit together (see extra page with the overview of the prints). Cut off the single sheets on the upper and right edge along the thin frame lines. Begin with the left lower sheet and then glue the parts in the frame lines together precisely.

Select your cut size according to the Burda-dimension table: Dresses, blouses, jackets and coats according to the bust size, trousers and skirts according to the hip width. Change the patterns about 2/5" (1 cm) if necessary, to fit your measurements if they deviate from the Burda-dimension table.

Cut out the pattern according to your size.

LENGTHENING OR SHORTENING THE PATTERN PIECES

Our pattern is calculated for a height of 5' 6" (168 cm). If you are taller or shorter, you may adjust the pattern to fit

Make sure that you adjust all pieces of one model by the same amount at the same lines.

How to lengthen and shorten pattern pieces:

Cut the pattern pieces along the marked lines.

To **lengthen**, slide the two halves of the pattern piece as far apart as necessary.

To **shorten**, overlap the two halves of the pattern piece as far as necessary. Even out the side edges.

CUTTING OUT

FOLD (---) means: here is the center of a pattern piece but never a cut edge or a seam. The piece should be cut double, with the fold line forming the centre line.

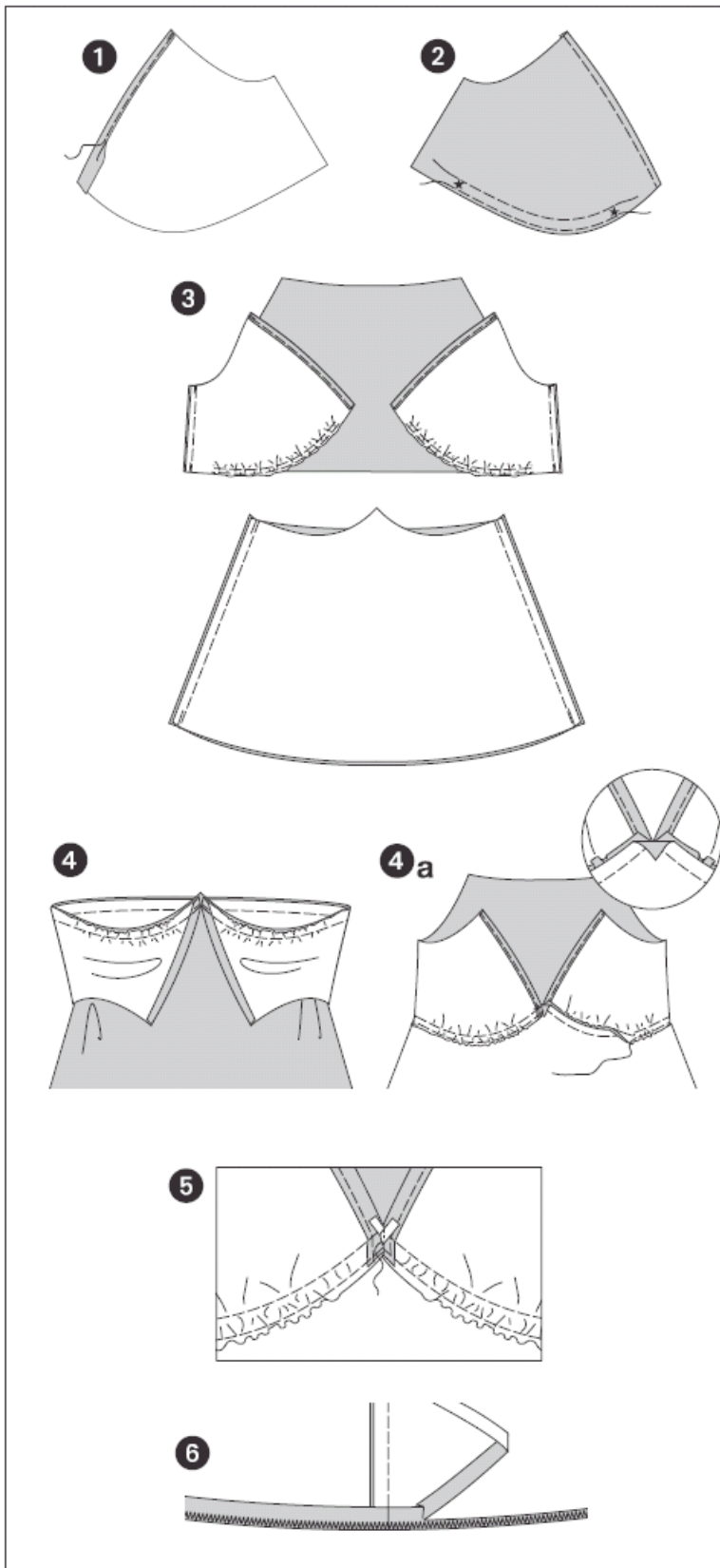
Pattern pieces that are outlined with a broken line in the cutting diagrams are to be placed face down on the fabric.

The cutting diagrams on the pattern sheet show how the pattern pieces should be placed on the fabric.

For a single layer of fabric, the pattern pieces are pinned to the right side. For double layers of fabric, the right sides are facing and the pattern pieces are pinned to the left side. The pattern pieces that are shown in the cutting diagram, extending over the fold of the fabric, should be cut last from a single layer of fabric.

SEAM AND HEMLINE ALLOWANCES are included on an average:

5/8" (1.5 cm) for all edges and seams. Use BURDA carbon paper to transfer all pattern lines and markings to the left side of the fabric pieces. You find instructions in the packet.



SEWING

When sewing, right sides of fabric should be facing.

Transfer all pattern lines to the right side of the fabric.

TOP

Upper front pieces

1) On the upper front pieces fold and press the allowances of the neckline edge inwards, fold again and baste. Stitch allowance narrowly.

2) Double stitch the part under the bust using basting stitches between ● and ● on the pattern. Pull the underthread to the length of the front piece (measure from the side edge to front center). Knot threads. Space out the gathering evenly..

Side seams

3) Position upper front piece onto upper back piece facing right to right. Position front piece onto back piece facing right to right. Stitch side seams (seam 1 and 2). Trim allowances, neaten and press backwards.

Dividing seams

Neaten upper piece at the bottom edge, the front and back pieces at the upper edges.

4) Baste complete upper piece onto the front and back piece facing right to right (seam 3) and stitch. The upper front pieces meet at the front center, side seams meet as well. Press first the allowance of the bottom front piece at the front center downwards then all others (4a). Fold the allowances at the front center inside to create a tunnel for elastic. Stitch allowance for the tunnel approximately 3/8" wide, stitch tunnel down at the same time.

5) Cut elastic for

Size 4 – 25 1/2" (65 cm)

Size 6 – 27" (69 cm)

Size 8 – 29" (73 cm)

Size 10 – 30" (77 cm)

Size 12 – 32" (81 cm)

Size 14 – 33 1/2" (85 cm)

Size 16 – 35" (89 cm)

long and insert it using a safety pin. Position loose ends in front center diagonally on top of each other and stitch it together. Secure seam ends. TIP: Verify the fit first by trying it on.

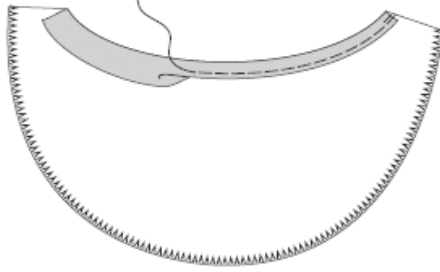
Back neckline edge

Stitch allowance of the upper back edge according to text and drawing 1.

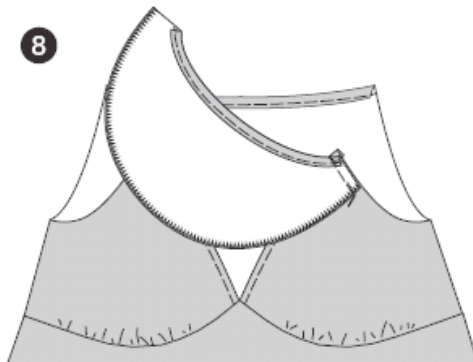
Hemline

6) Fold and press allowances, stitch edge using a narrowly adjusted zigzag stitch. Trim allowances close to the stitches. TIP: Do the test on a remnant. Use machine thread or darning cotton. Test machine stitch setting and thread tension.

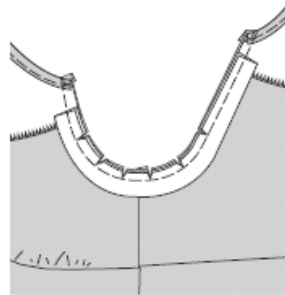
7



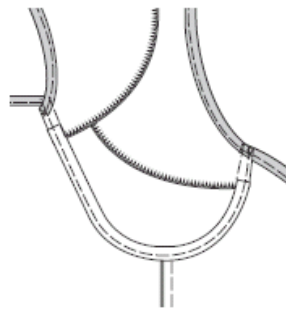
8



9



10



Sleeves

Neaten the allowance of the round lower sleeve edge according to the text and drawing 6.

7) Fold and press the allowance of the opposite edge inwards, fold again, baste and stitch it narrowly.

8) Baste front sleeve edge onto the front piece, from cross line to sleeve line (seam 4) and stitch. Secure seam ends. Stitch the sleeve edge onto the back piece the same way (seam 5). Trim allowances back to 3/8" and neaten along the sleeve seams.

Armhole / bias tape

Fold bias tape along, press.

9) Baste bias tape between the sleeve edges onto the armholes, so that the open edges and the ends lay 3/8" (1 cm) onto the sleeves. Stitch bias tape 3/8" (1 cm) wide. Trim allowances, cut in.

10) Baste bias tape inwards and press. Stitch armholes 1/4" (0.7 cm) wide, thereby stitching the bias tape and allowances of the sleeve seams.