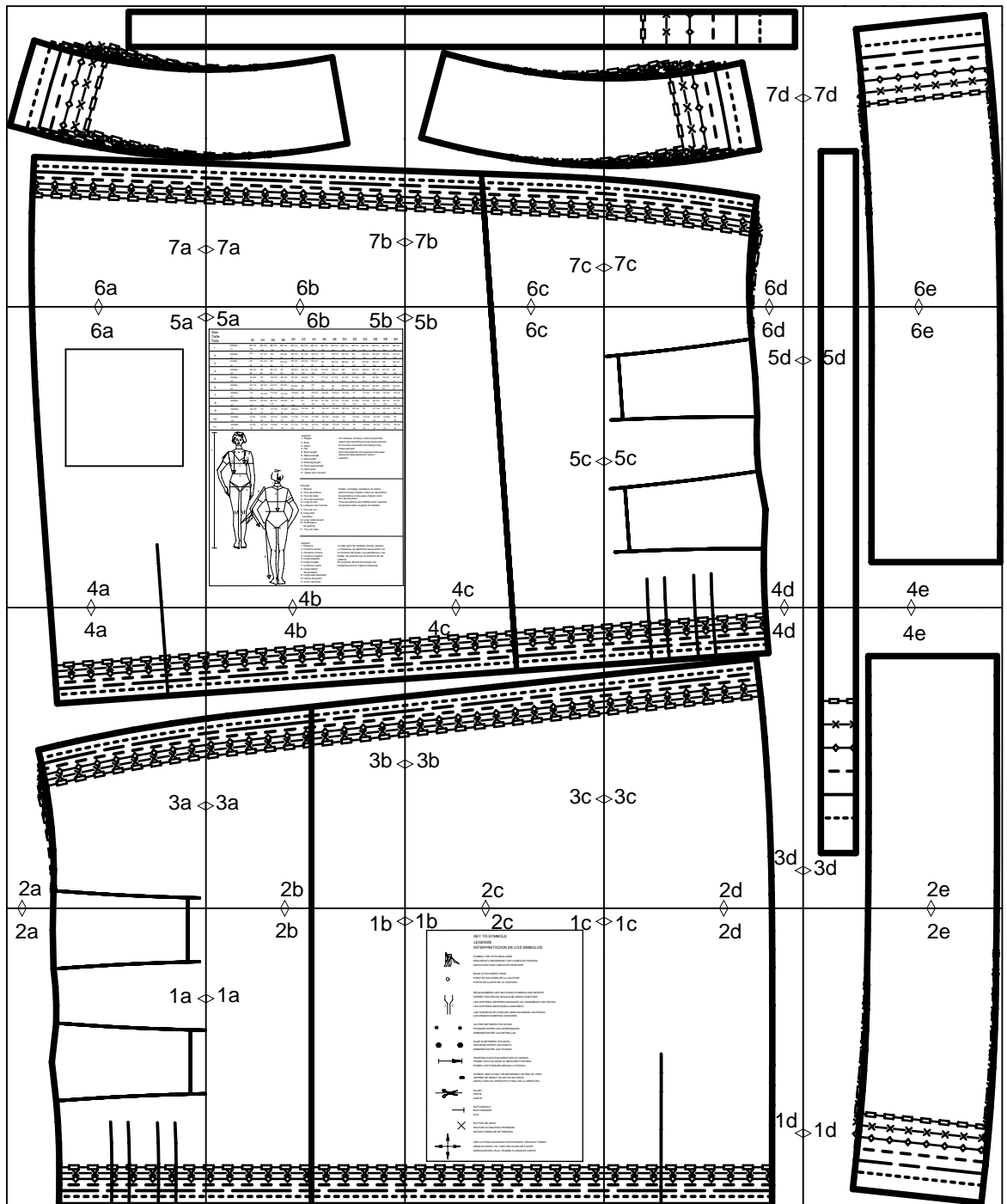


burdastyle download 8090 A

layout drawing



2a

PLEAT
PLI
PLIEGUE

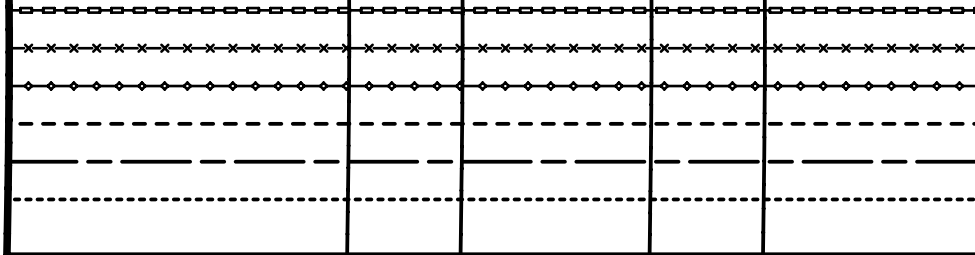
1a

SEAM
COUTURE
COSTURA

PLEAT
PLI
PLIEGUE

I
RIBBON
BANDE OU RUBAN
CINTA

II
RIBBON
BANDE OU RUBAN
CINTA



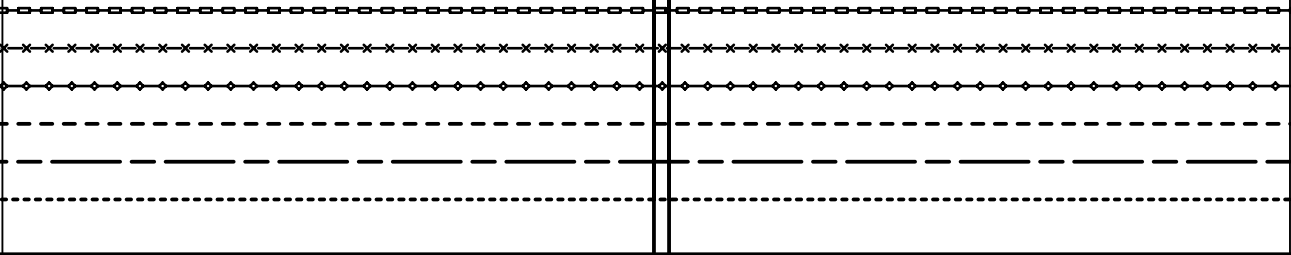
2b

1b

1a

LENGTHEN OR SHORTEN HERE
RALLONGER OU RACCOURCIR ICI
ALARGAR O ACORTAR AQUI

CENTER BACK FOLD STRAIGHT GRAIN
PLIURE DU TISSU MILIEU DOS DROIT FIL
CENTRO POSTERIOR DOBLEZ DIR.HILO



1b

2c

1c

KEY TO SYMBOLS
 LEGENDE
 INTERPRETACION DE LOS SIMBOLOS



SYMBOL FOR STITCHING LINES
 REMARQUE CONCERNANT LES LIGNES DE PIQUES
 INDICACION PARA LINEAS DE PESPUNTE



SEAM ATTACHMENT POINT
 POINT DE RACCORD DE LA COUTURE
 PUNTO DE AJUSTE DE LA COSTURA



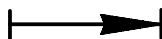
SEAM NUMBERS ARE MATCHING SYMBOLS AND DENOTE
 WHERE TWO PIECES SHOULD BE SEWN TOGETHER.
 LES CHIFFRES-REPERES INDIQUENT OU ASSEMBLER LES PIECES.
 LES CHIFFRES IDENTIQUES COINCIDENT.
 LOS NUMEROS DE COSTURA INDICAN DONDE LAS PIEZAS.
 LOS MISMOS NUMEROS CONCIDEN.



GATHER BETWEEN THE STARS.
 FRONCER ENTRE LES ASTERISQUES.
 EMBEBER ENTRE LAS ESTRELLAS.



EASE IN BETWEEN THE DOTS.
 SOUTENIR ENTRE LES POINTS.
 EMBEBER ENTRE LOS PUNTOS.



POSITION PLEATS IN DIRECTION OF ARROW.
 POSER LES PLIEQUES DANS LE SENS DES FLECHES.
 PONER LOS PLIEQUES SEGUN LA FLECHA.



SYMBOL INDICATING THE BEGINNING OR END OF VENT.
 REPERE DE DEBUT OU DE FIN DE FENTE.
 MARCA PARA EL PRINCIPIO O FINAL DE LA ABERTURA.



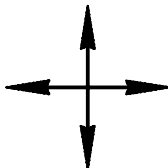
SLASH
 FENTE
 CORTE



BUTTONHOLE
 BOUTONNIERE
 OIAL



BUTTON OR SNAP
 BOUTON OU BOUTON-PRESSION
 BOTON O BROCHE DE PRESION



SEE CUTTING DIAGRAMS FOR STRAIGHT GRAIN OF FABRIC
 SENS DU DROIT-FIL VOIR LES PLANS DE COUPE
 DIRECCION DEL HILO, VEANSE PLANOS DE CORTE



1c

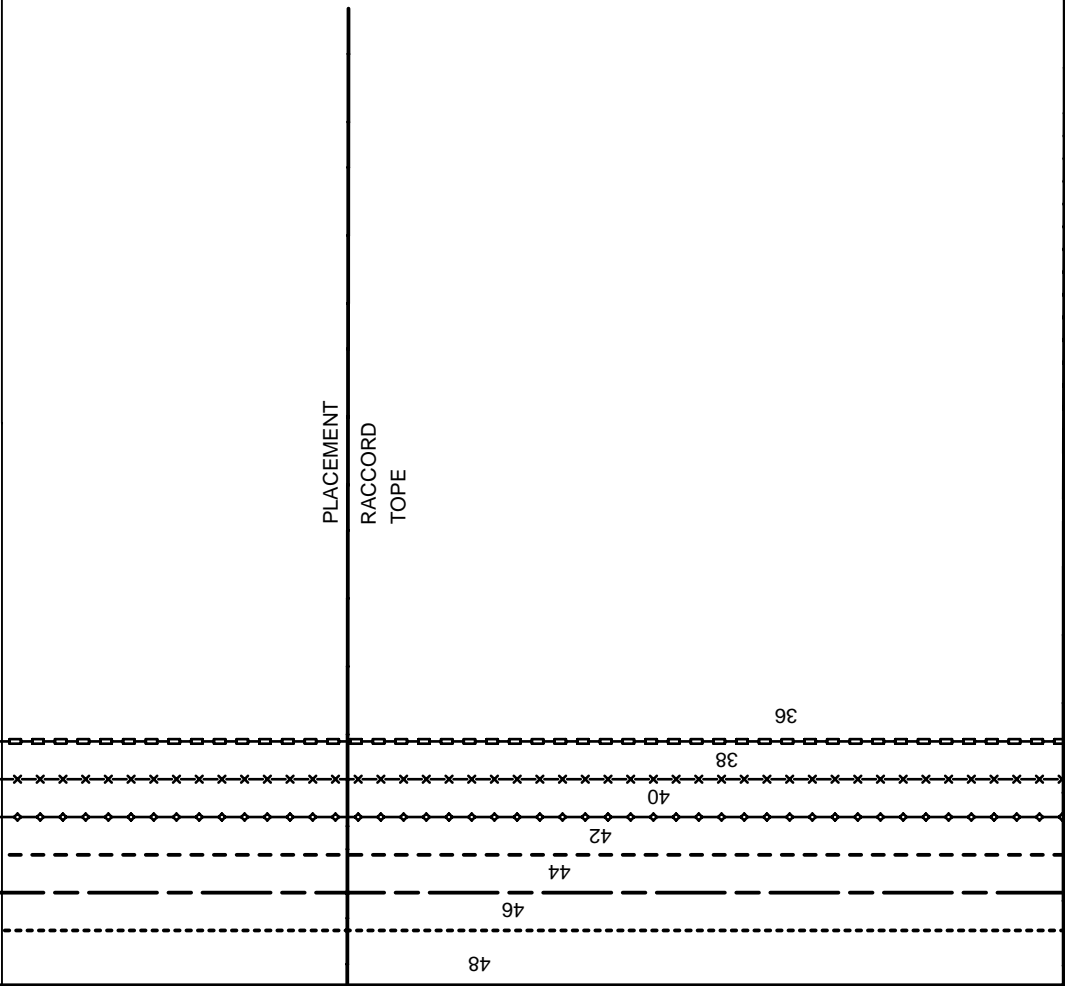


2d



PLACEMENT
RACCORD
TOPE

1d



5

FRONT BAND
PAREMENT/PATTE DEVANT
CENEFA ANTERIOR

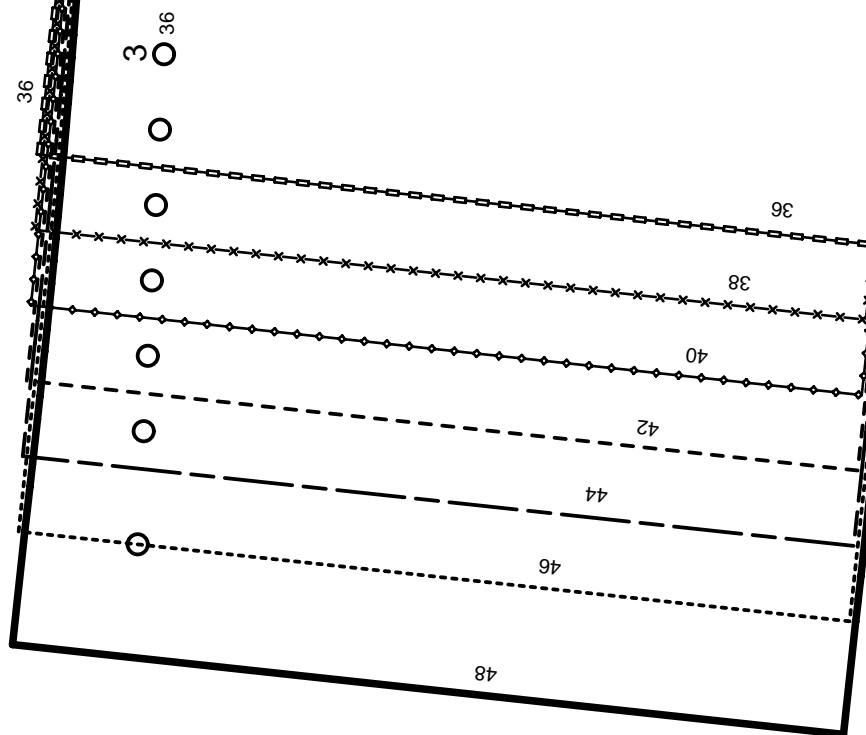
ON THE FOLD
DANS LA PLIURE DU TISSU
CON CANTO DOBLADO



SEAM ALLOWANCE INCLUDED
AVEC VALEUR DE COUTURE
CON MARGEN DE COSTURA

5/8"
(1.5cm)

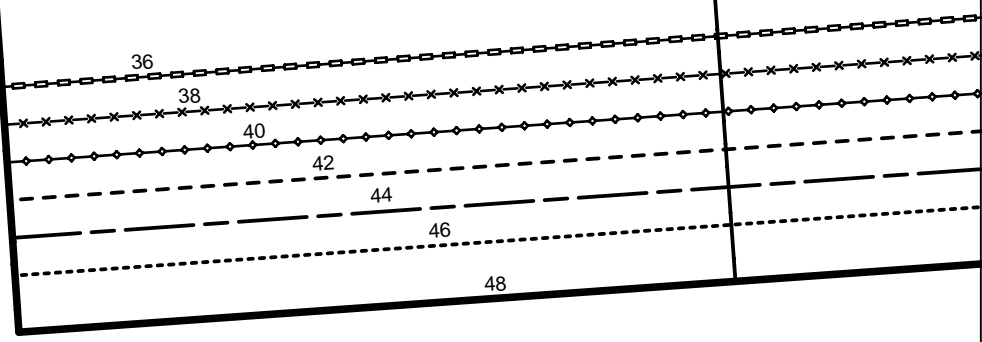
8090



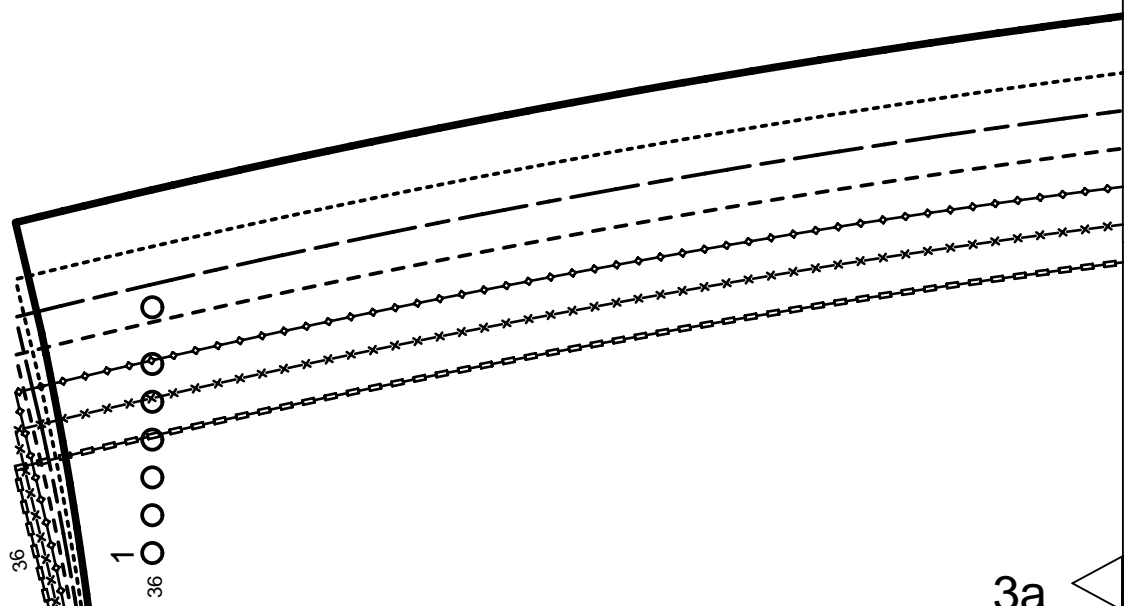
1d

2e

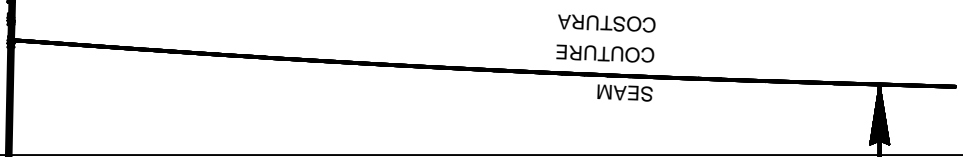
4a



3a



2a

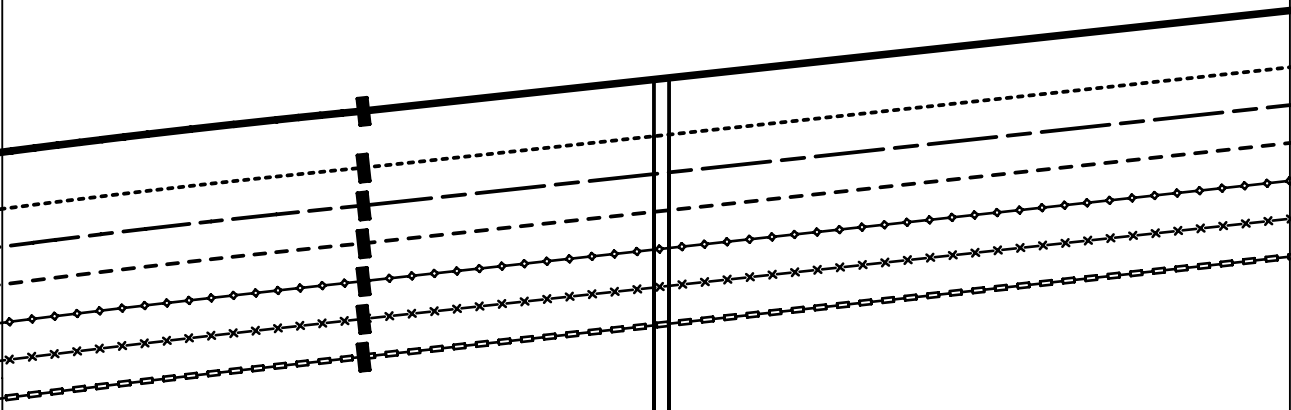
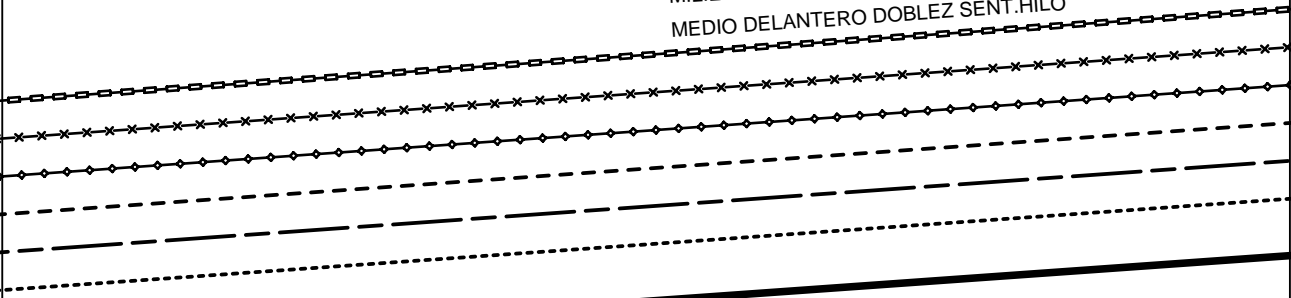


SEAM
COUTURE
COSTURA



4b

CENTER FRONT FOLD, STRAIGHT GRAIN
MILIEU DEVANT PLIURE, DROIT FIL
MEDIO DELANTERO DOBLEZ SENT.HILO



3b

3a

2b

2

BACK SKIRT PANEL
DOS DE JUPE
FALDA POST.

ON THE FOLD

DANS LA PLIURE DU TISSU
CON CANTO DOBLADO



1 x

2c

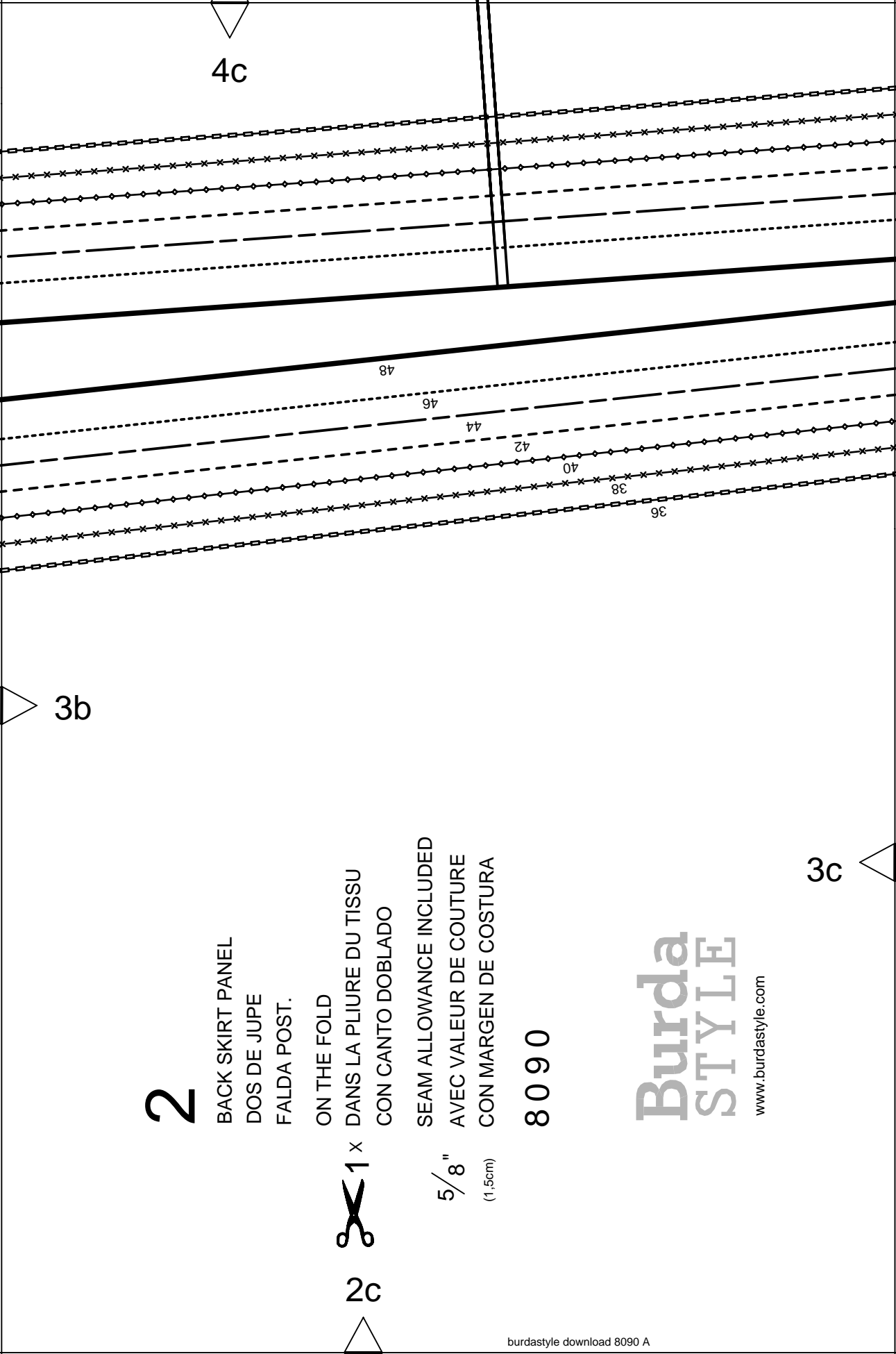
SEAM ALLOWANCE INCLUDED
AVEC VALEUR DE COUTURE
CON MARGEN DE COSTURA

5/8"
(1.5cm)

8090

Burda
STYLE

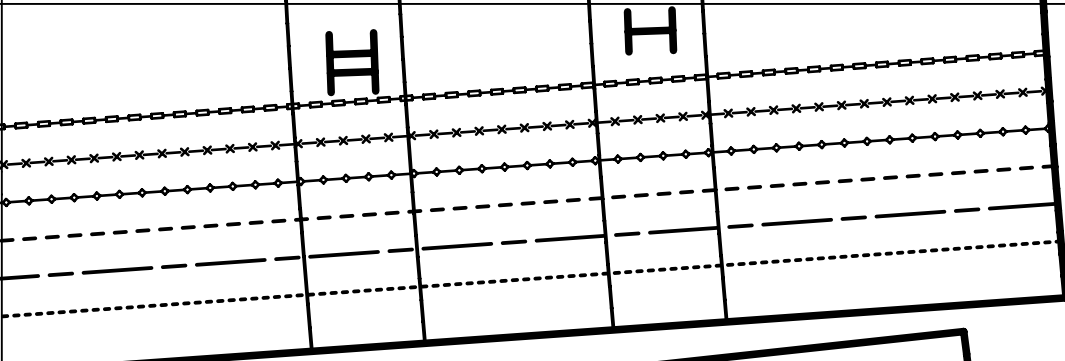
www.burdastyle.com



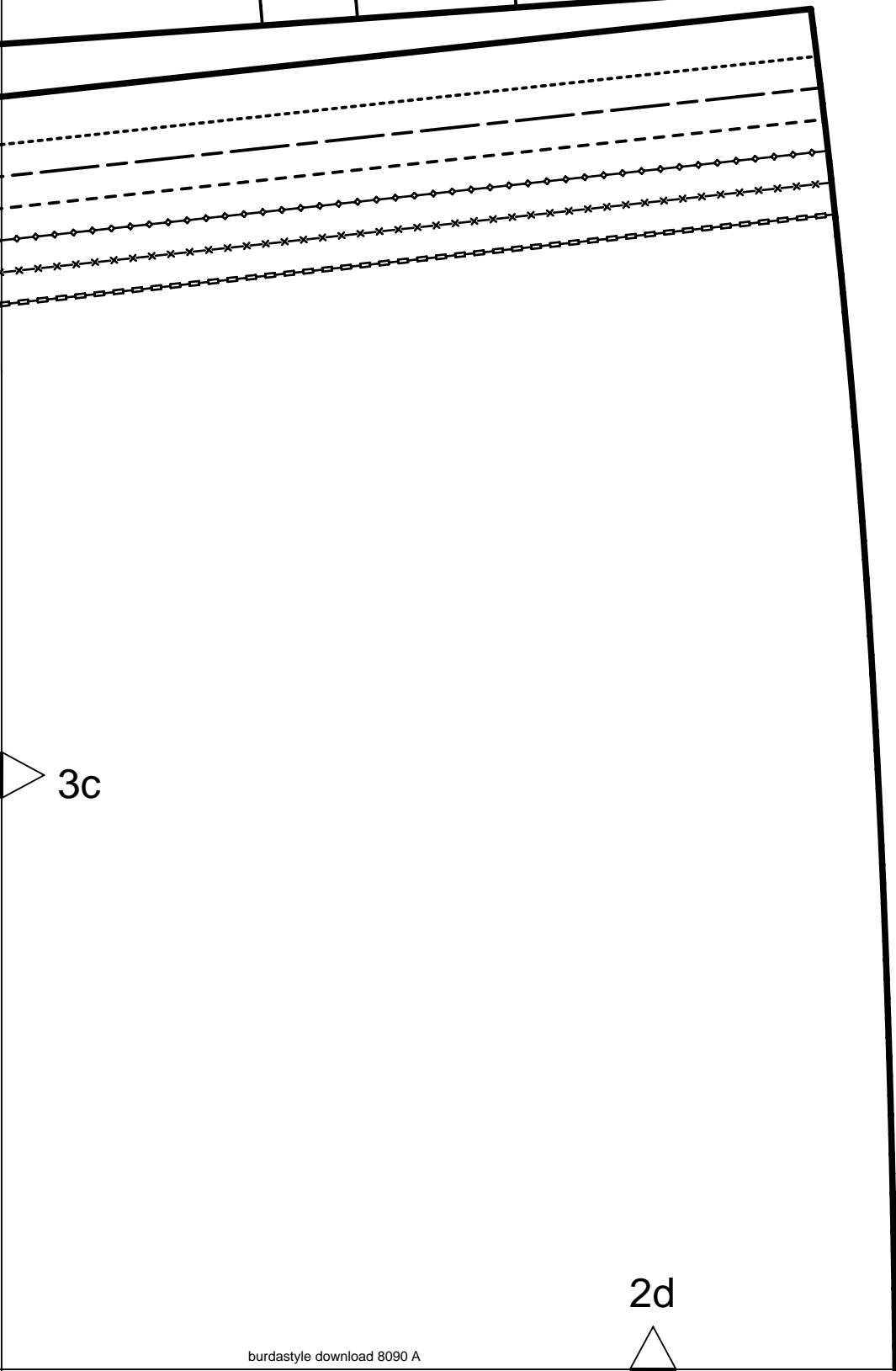
4c

3b

3c



4d

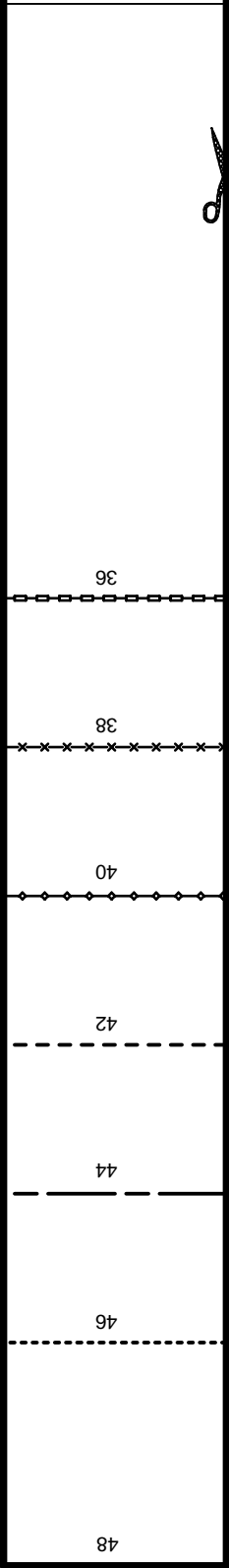


3c

3d

2d

4e



MEDIO DELANTERO DOBLEZ SENT.HILO
 MILIEU DEVANT PUIRE, DROIT FIL
 CENTER FRONT FOLD, STRAIGHT GRAIN

Burda
STYLE

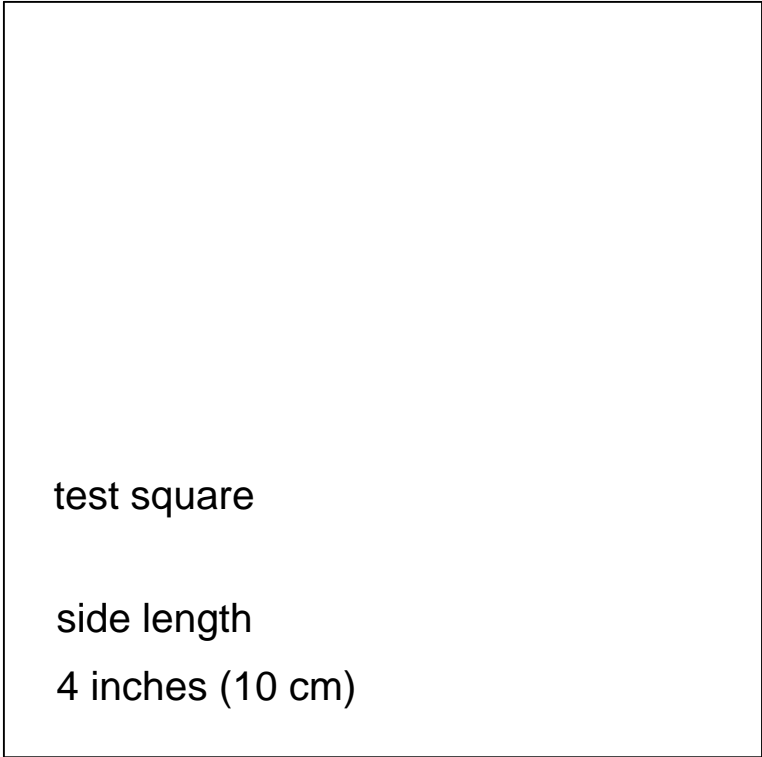
www.burdastyle.com

3d

2e

6a

5a



PLACEMENT
RACCORD
TOPE

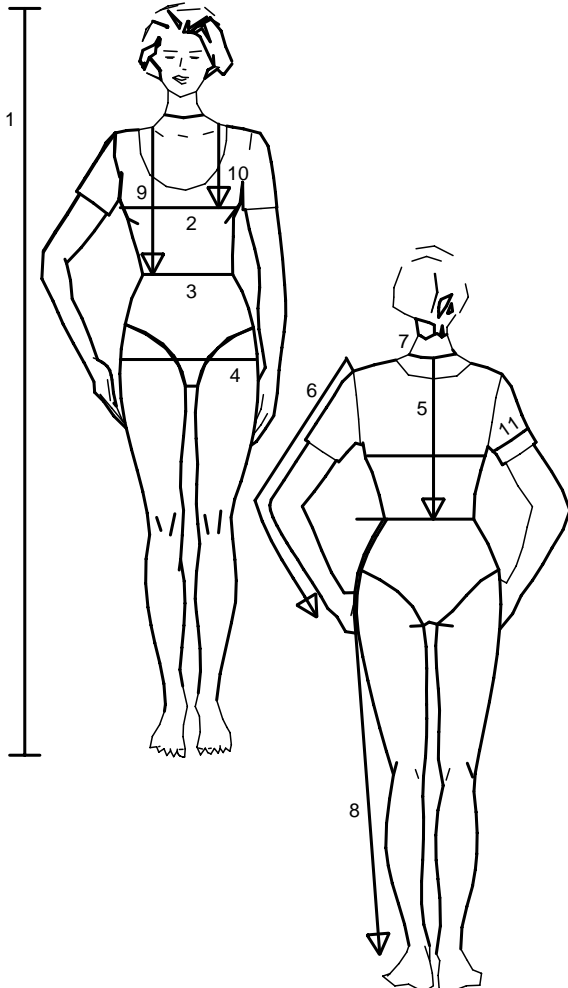
4a

5a

6b

5b

Size Taille Talla		32	34	36	38	40	42	44	46	48	50	52	54	56	58	60
1	inches	66 1/4	66 1/4	66 1/4	66 1/4	66 1/4	66 1/4	66 1/4	66 1/4	66 1/4	66 1/4	66 1/4	66 1/4	66 1/4	66 1/4	66 1/4
	cm	168	168	168	168	168	168	168	168	168	168	168	168	168	168	168
2	inches	30	31 1/2	33	34 3/4	36 1/4	37 3/4	39 1/2	41	43 1/2	45 1/2	48	50 1/2	52 3/4	55 1/4	57 1/2
	cm	76	80	84	88	92	96	100	104	110	116	122	128	134	140	146
3	inches	23	24 1/2	26	27 3/4	29 1/4	30 3/4	32 1/2	34	36 1/4	38 3/4	41	43 1/2	45 1/2	48	50 1/2
	cm	58	62	66	70	74	78	82	86	92	98	104	110	116	122	128
4	inches	32 1/2	34	35 1/2	37	38 3/4	40 1/4	41 3/4	43 1/2	45 1/2	48	50 1/2	52 3/4	55 1/4	57 1/2	60
	cm	82	86	90	94	98	102	106	110	116	122	128	134	140	146	152
5	inches	15 3/4	16	16 1/4	16 1/2	16 1/2	16 3/4	17	17 1/4	17 1/4	17 1/2	17 3/4	18	18 1/4	18 1/2	18 1/2
	cm	40	40,5	41	41,5	42	42,5	43	43,5	44	44,5	45	45,5	46	46,5	47
6	inches	23 1/4	23 1/4	23 1/4	23 3/4	23 3/4	24	24	24	24	24 1/2	24 1/2	24 1/2	24 3/4	24 3/4	24 3/4
	cm	59	59	59	60	60	61	61	61	61	62	62	62	63	63	63
7	inches	13	13 1/2	14 1/4	14 1/2	14 3/4	15	15 1/2	15 3/4	16 1/4	16 1/2	17	17 1/4	17 3/4	18 1/4	18 1/2
	cm	33	34	35	36	37	38	39	40	41	42	43	44	45	46	47
8	inches	39 3/4	40 1/4	40 1/4	40 3/4	41	41	41 1/2	41 1/2	41 1/2	41 3/4	41 3/4	41 3/4	42 1/4	42 1/4	42 1/2
	cm	101	102	102	103	104	104	105	105	105	106	106	106	107	108	108
9	inches	16 1/2	17	17 1/4	17 3/4	18 1/4	18 1/2	19	19 1/4	19 3/4	20 1/4	20 1/2	21	21 1/4	21 3/4	22 1/4
	cm	42	43	44	45	46	47	48	49	50	51	52	53	54	55	56
10	inches	9 1/2	9 7/8	10 1/4	10 3/4	11 1/8	11 1/2	11 7/8	12 1/4	12 3/4	13	13 1/2	14 1/4	14 1/2	14 3/4	15
	cm	24	25	26	27	28	29	30	31	32	33	34	35	36	37	38
11	inches	9 7/8	10 1/4	10 3/4	11 1/8	11 1/2	11 7/8	12 1/4	12 3/4	13 1/2	14 1/2	15	15 3/4	16 1/2	17 1/4	18 1/4
	cm	25	26	27	28	29	30	31	32	34	36	38	40	42	44	46



englisch

1. Height
2. Bust
3. Waist
4. Hip
5. Back length
6. Sleeve length
7. Neck width
8. Side leg length
9. Front waist length
10. Bust point
11. Upper arm circumf.

For dresses, blouses, coats and jackets select size according to bust measurement, for trousers and skirts according to hip measurement!

All burda patterns are prepared with ease allowance appropriate for style in question.

français

1. Stature
2. Tour de poitrine
3. Tour de taille
4. Tour des hanches
5. Long. du dos
6. Longueur de manche
7. Tour de cou
8. Long. côté pantalon
9. Long. taille devant
10. Profondeur de poitrine
11. Tour du bras

Robes, corsages, manteaux et vestes seront choisis d'après votre tour de poitrine les pantalons et les jupes d'après votre tour de hanches!
Tous les patrons sont établis avec l'aisance nécessaire selon le genre du modèle.

español

1. Estatura
2. Contorno busto
3. Contorno cintura
4. Contorno cadera
5. Largo espalda
6. Largo manga
7. Contorno cuello
8. Largo lateral del pantalón
9. Largo talle delantero
10. Altura de pecho
11. Cont. de brazo

La talla para los vestidos, blusas, abrigos y chaquetas, se determina de acuerdo con el contorno del busto. Los pantalones y las faldas, de acuerdo con el contorno de las caderas.
En el patrón-Burda se incluyen los márgenes para la holgura necesaria.

4b

1

FRONT SKIRT PANEL
DEVANT JUPE
FALDA ANTERIOR



1 x
ON THE FOLD
DANS LA PLIURE DU TISSU
CON CANTO DOBLADO

5/8" (1.5cm)
SEAM ALLOWANCE INCLUDED
AVEC VALEUR DE COUTURE
CON MARGEN DE COSTURA

8090

5c

LENGTHEN OR SHORTEN HERE
RALLONGER OU RACCOURCIR ICI
ALARGAR O ACORTAR AQUI

4c

5b

6c

Burda
STYLE

www.burdastyle.com

6d

5d

5c

4d

SEAM
COUTURE
COSTURA

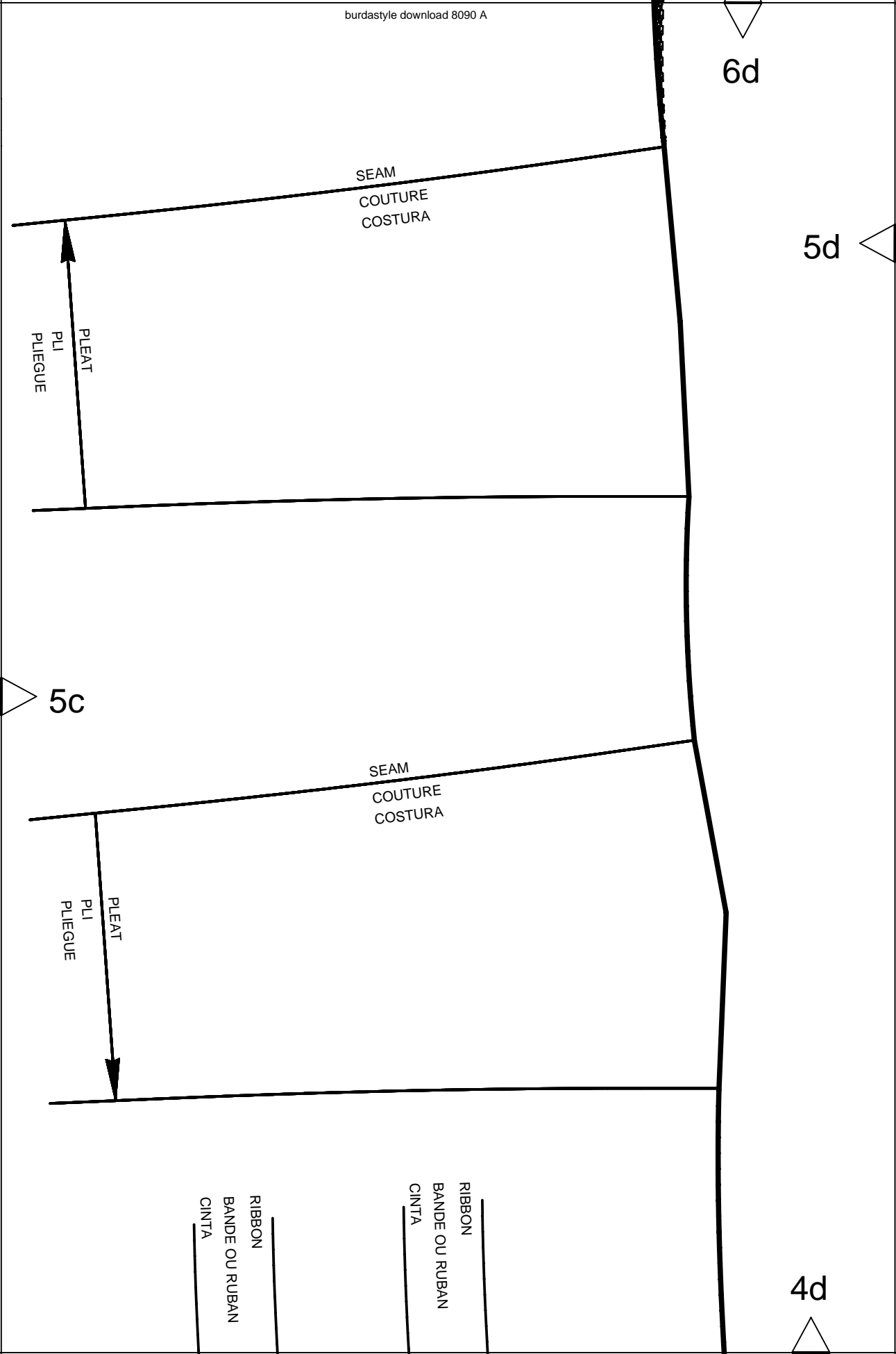
PLEAT
PLI
PLIEGUE

SEAM
COUTURE
COSTURA

PLEAT
PLI
PLIEGUE

RIBBON
BANDE OU RUBAN
CINTA

RIBBON
BANDE OU RUBAN
CINTA



5d

Burda
STYLE

www.burdastyle.com

8

II

RIBBON
BANDE OU RUBAN
CINTA

 2 x 8090



6

BACK BAND
PAREMENT DOS
CENEFA POST.

ON THE FOLD
DANS LA PLIURE DU TISSU
CON CANTO DOBLADO



SEAM ALLOWANCE INCLUDED
AVEC VALEUR DE COUTURE
CON MARGEN DE COSTURA

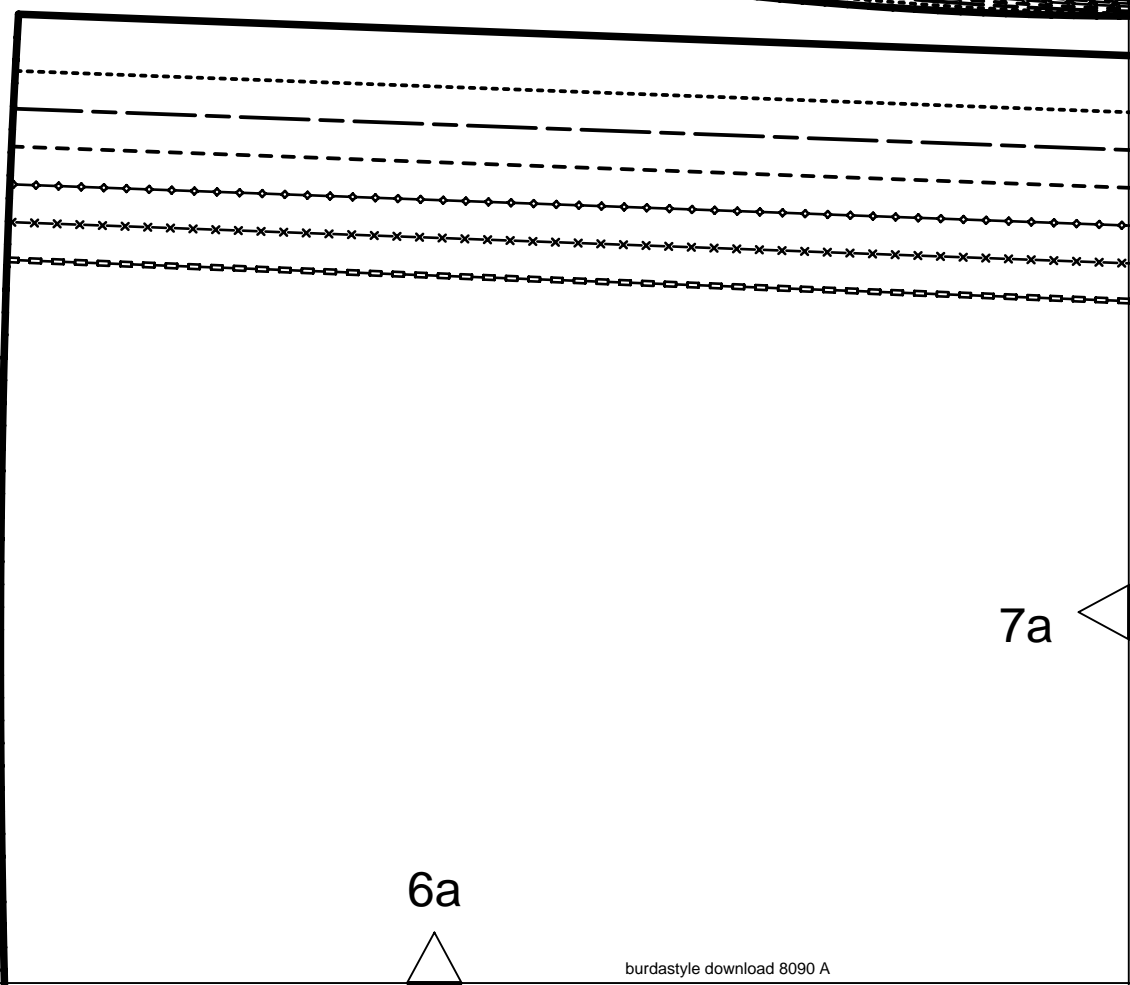
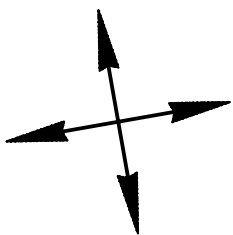
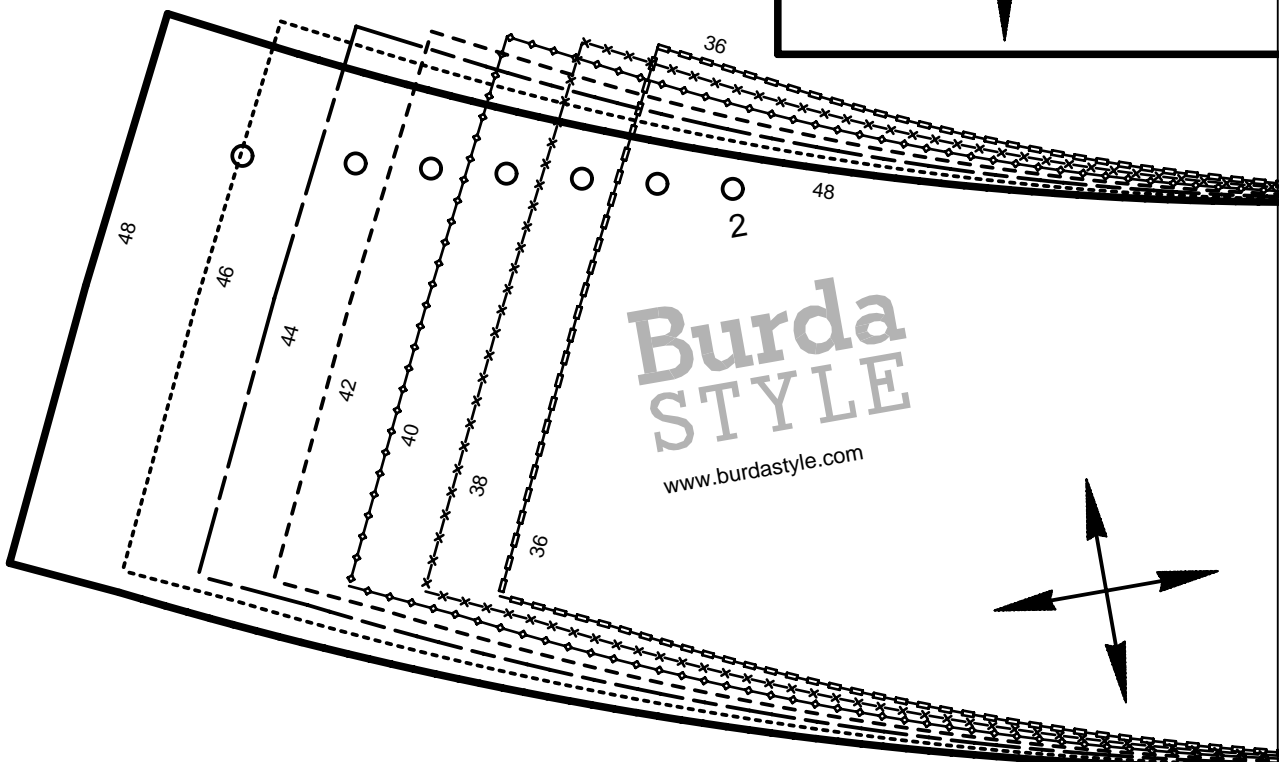
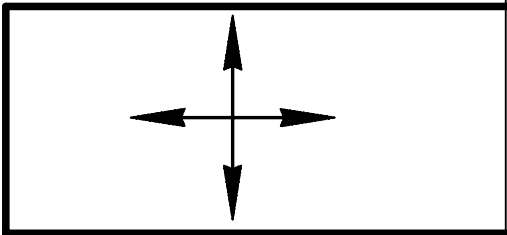
5/8"
(1,5cm)

8090

CENTER BACK FOLD STRAIGHT GRAIN
PLIURE DU TISSU MILIEU DOS DROIT FIL
CENTRO POSTERIOR DOBLEZ DIR.HILO

6e

4e



7a

6a

4 BACK FACING
PAREMENTURE DOS
VISTA POST.

ON THE FOLD
DANS LA PLIURE DU TISSU
CON CANTO DOBLADO
SEAM ALLOWANCE INCLUDED
AVEC VALEUR DE COUTURE
CON MARGEN DE COSTURA

$\frac{5}{8}$ "
(1,5cm)

8090

CENTER BACK FOLD
PLIURE DU TISSU MILIEU DOS
CENTRO POST. CANTO DE DOBLEZ

48

46

44

42

40

38

36

7a

7b

6b

0608 x 2 x 8090



RIBBON
BANDE OU RUBAN
CINTA



CENTER FRONT FOLD
PLIURE DU TISSU MILIEU DEVANT
CENTRO ANTERIOR CANTO DE DOBLEZ

3

FRONT FACING
PAREMENTURE DEVANT
VISTA ANTERIOR



1 x

ON THE FOLD
DANS LA PLIURE DU TISSU
CON CANTO DOBLADO

5/8"

(1.5cm)

SEAM ALLOWANCE INCLUDED
AVEC VALEUR DE COUTURE
CON MARGEN DE COSTURA

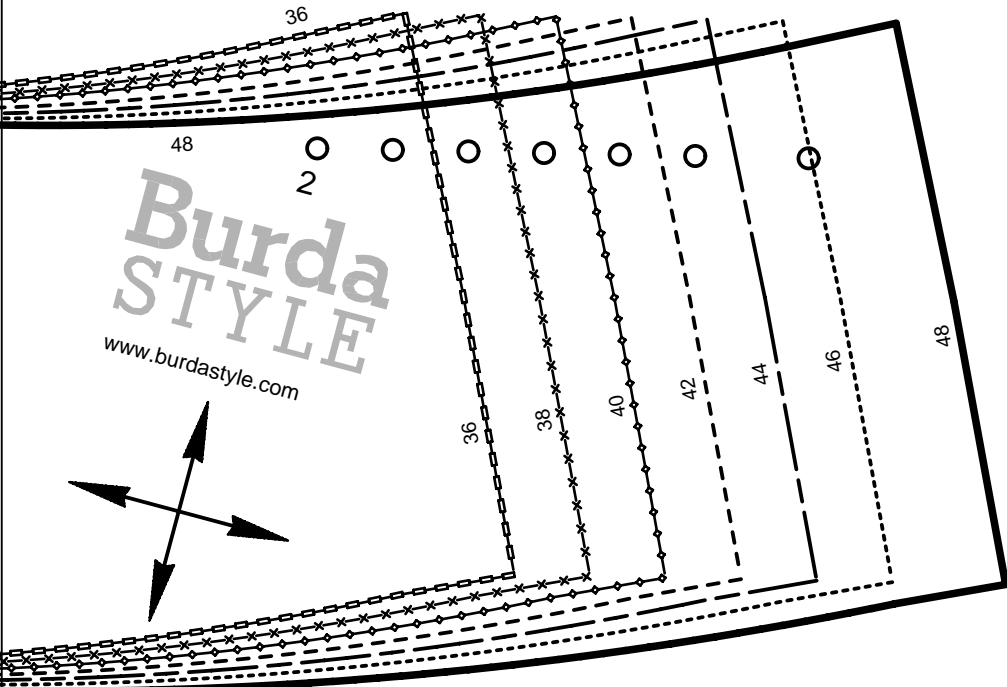
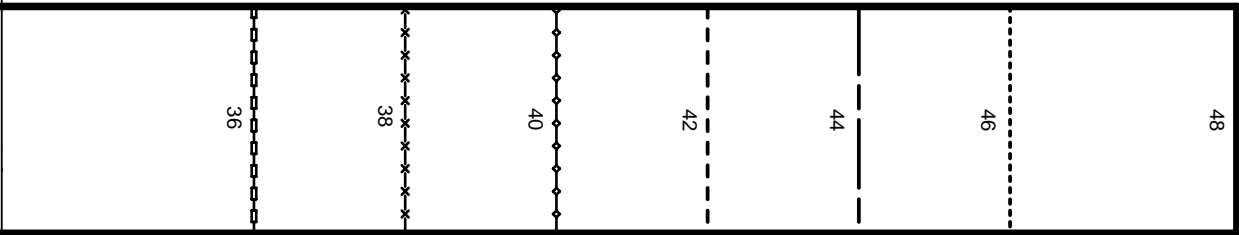
8090



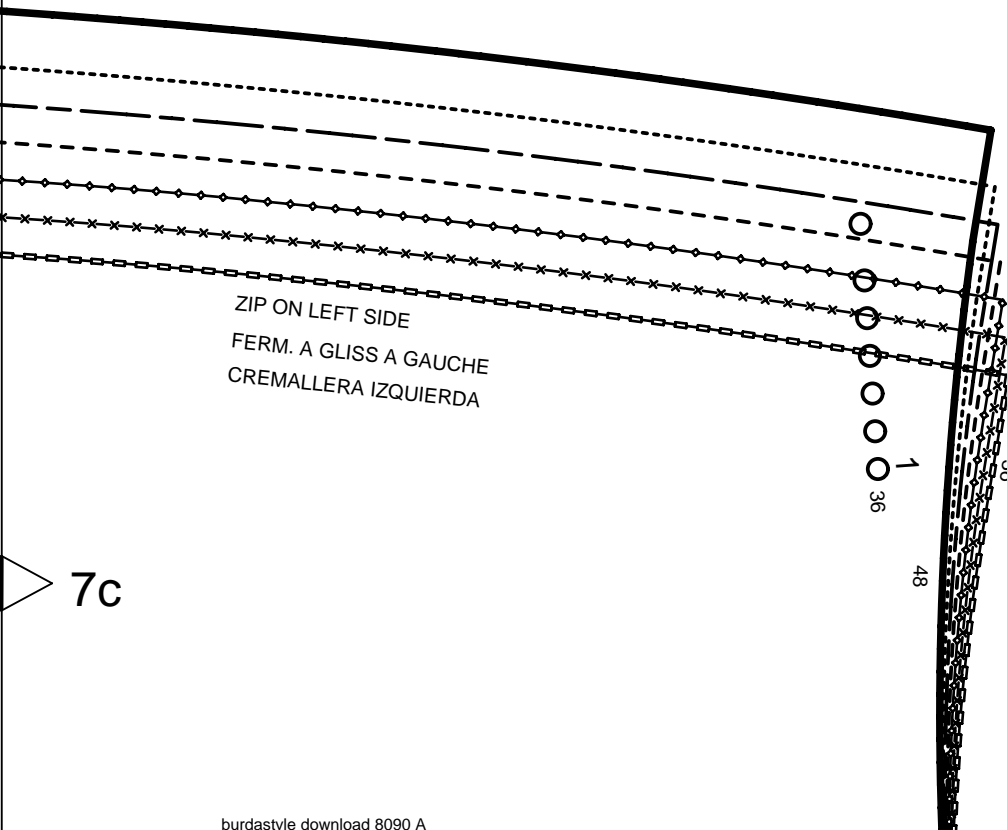
7b

7c

6c

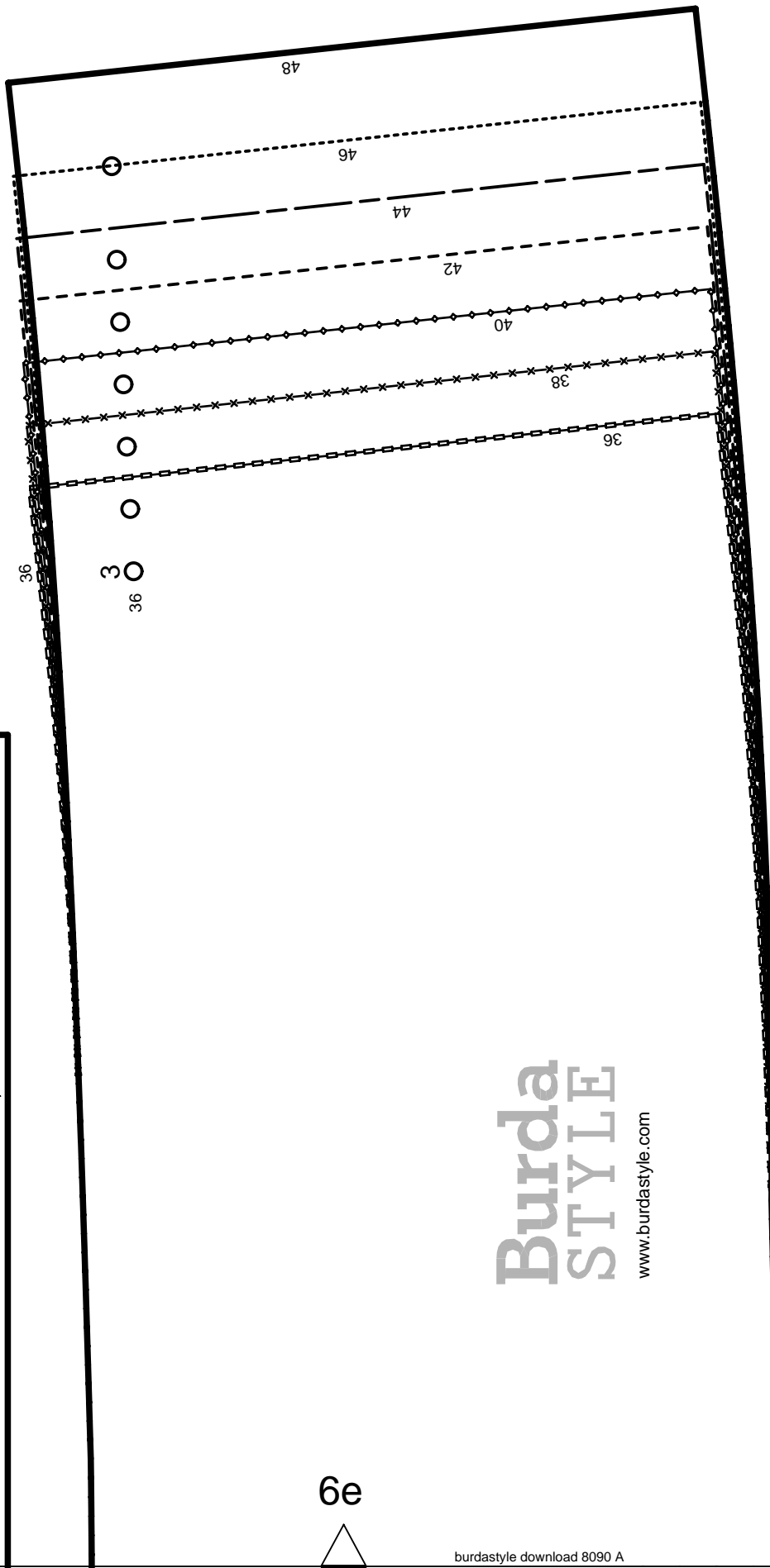


7d

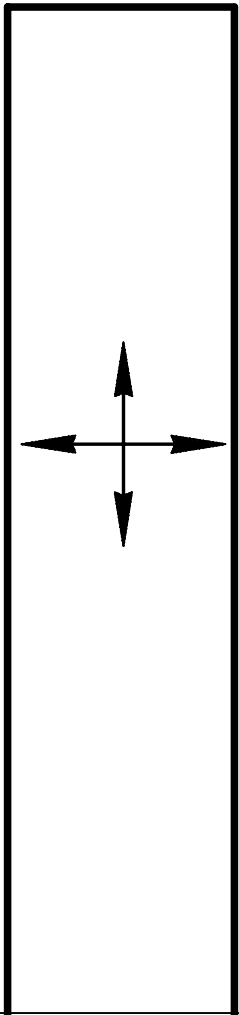


7c

6d



7d

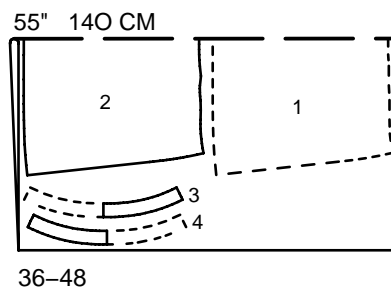
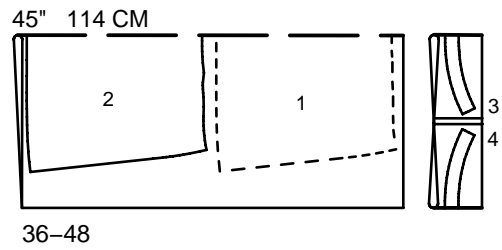


6e

Burda
STYLE

www.burdastyle.com

PATTERN LAYOUTS
PLANS DE COUPE
PLANOS DE CORTE



CONTRASTING FABRIC
TISSU GARNITURE
TELA DE GUARNICION

