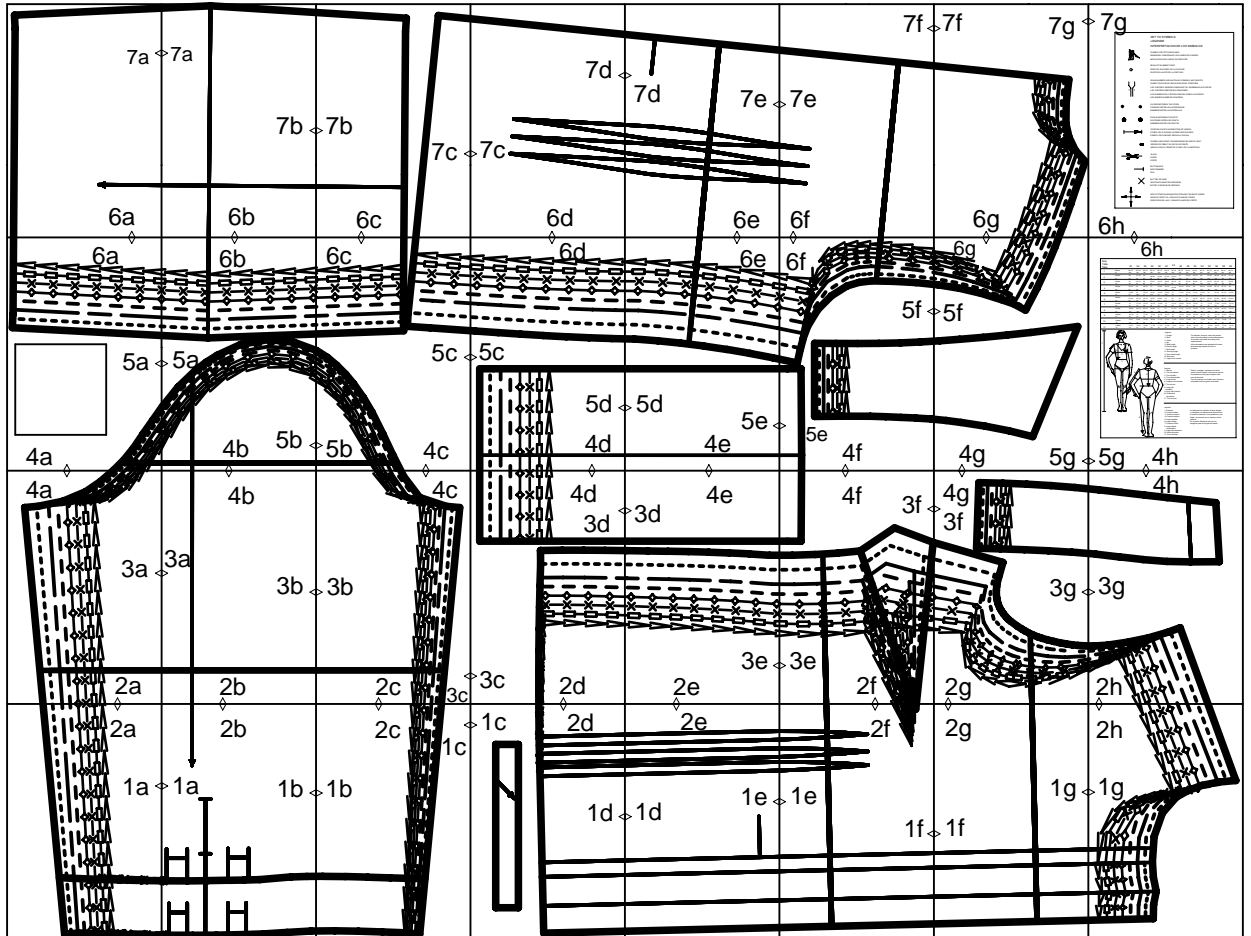
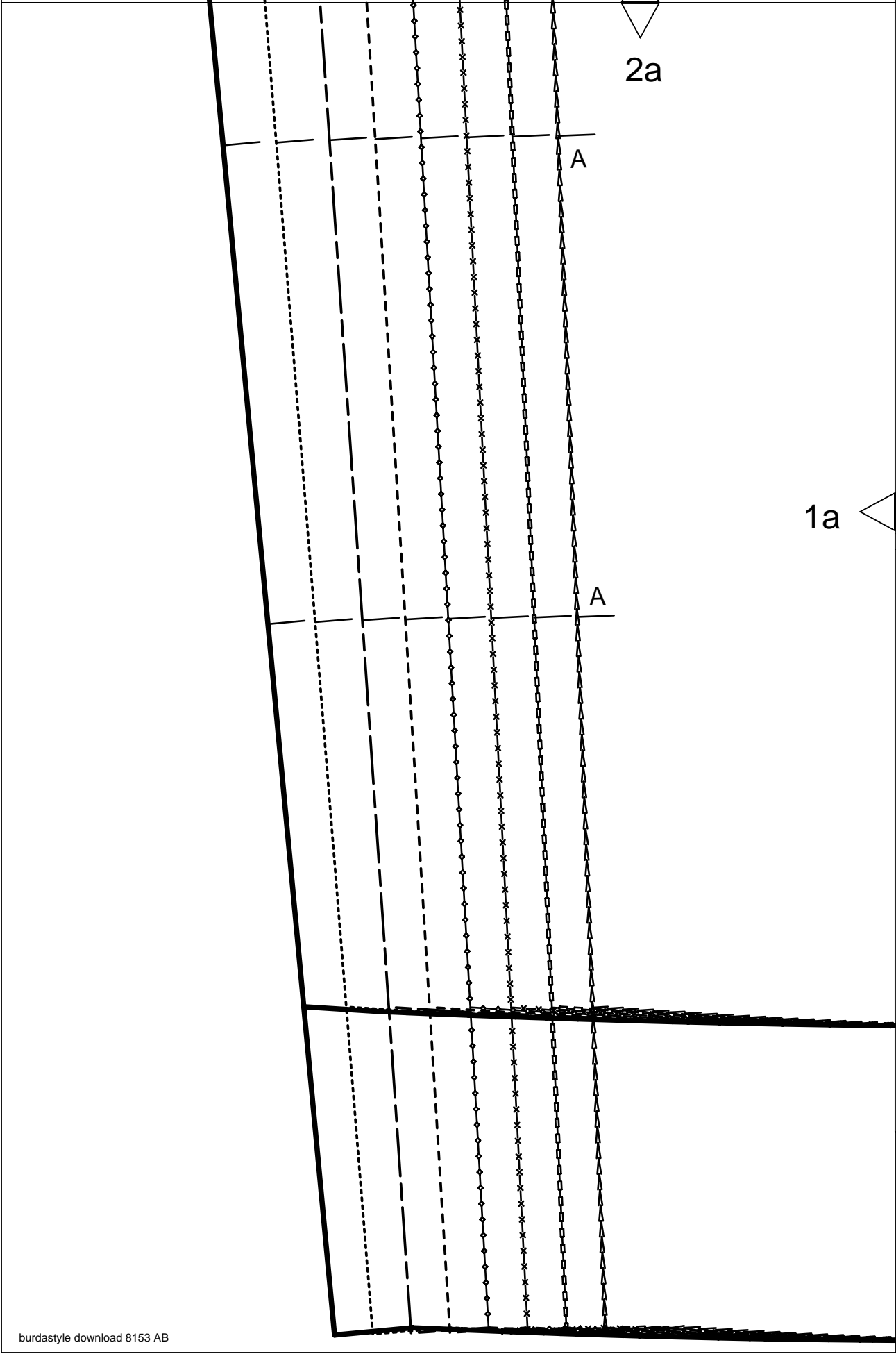


burdastyle download 8153 AB

layout drawing





2a

A

1a

A

2b

STRAIGHT GRAIN
DROIT FIL
SENTIDO HILO



1a

1b

B



B
PLEAT

B
PLEAT
PLI
PLIEGUE

A

B
PLEAT
PLI
PLIEGUE

8

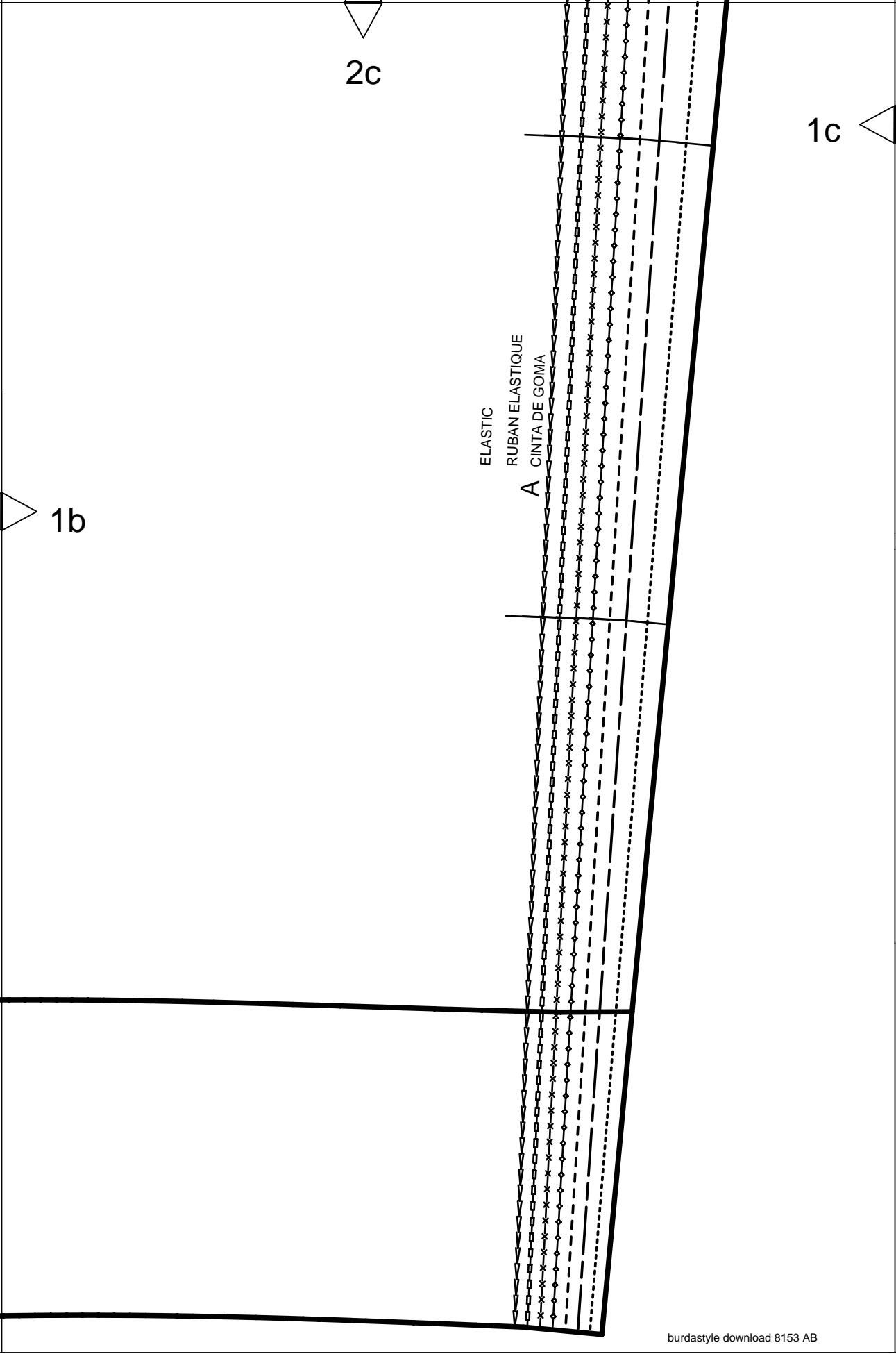


PLEAT
PLI
PLIEGUE

PLEAT
PLI
PLIEGUE

7










1c

Burda
STYLE
www.burdastyle.com

4 A,B 8153
 2 x 36-50

STRAIGHT GRAIN 



2d



1d



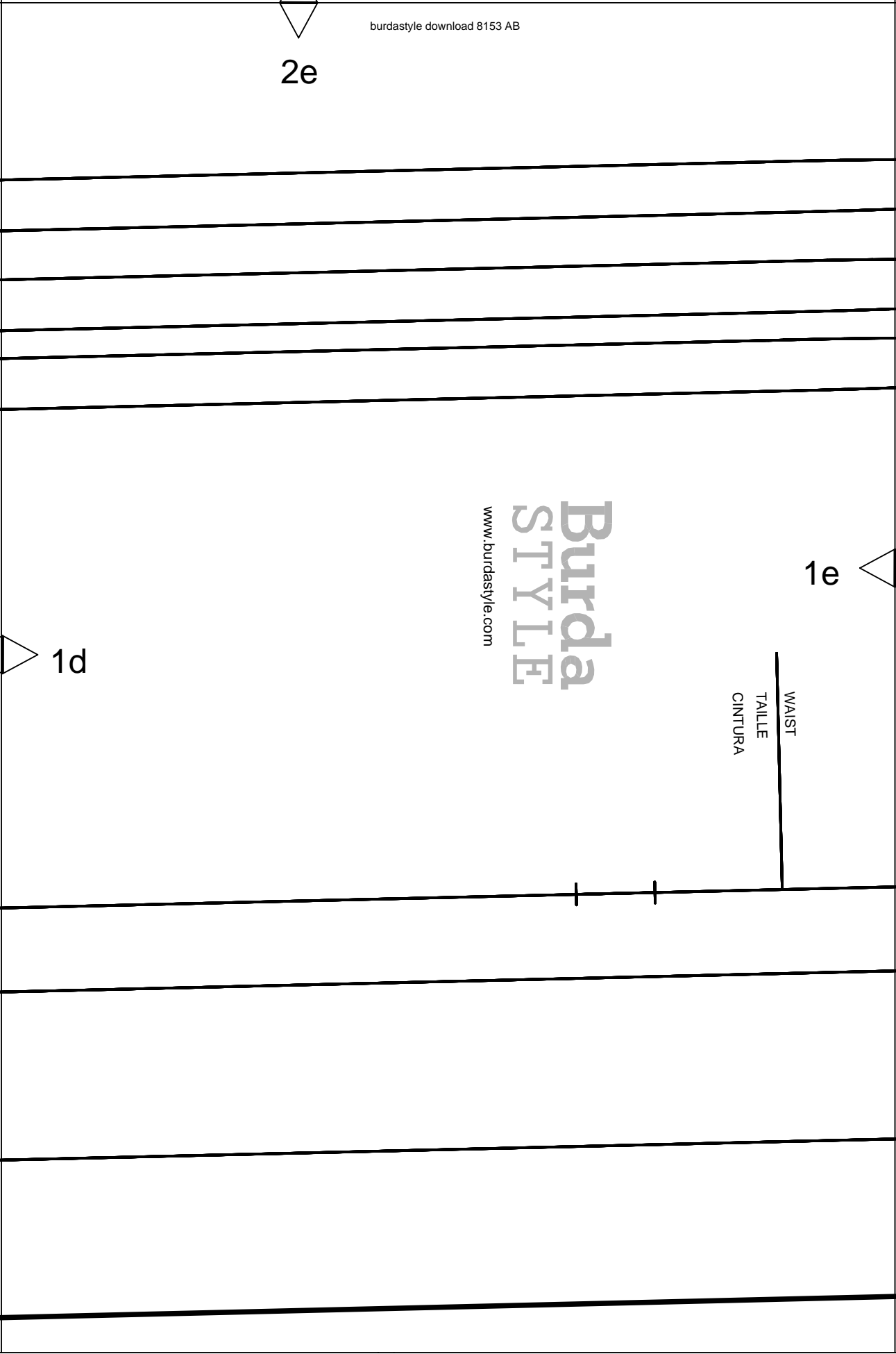
2e

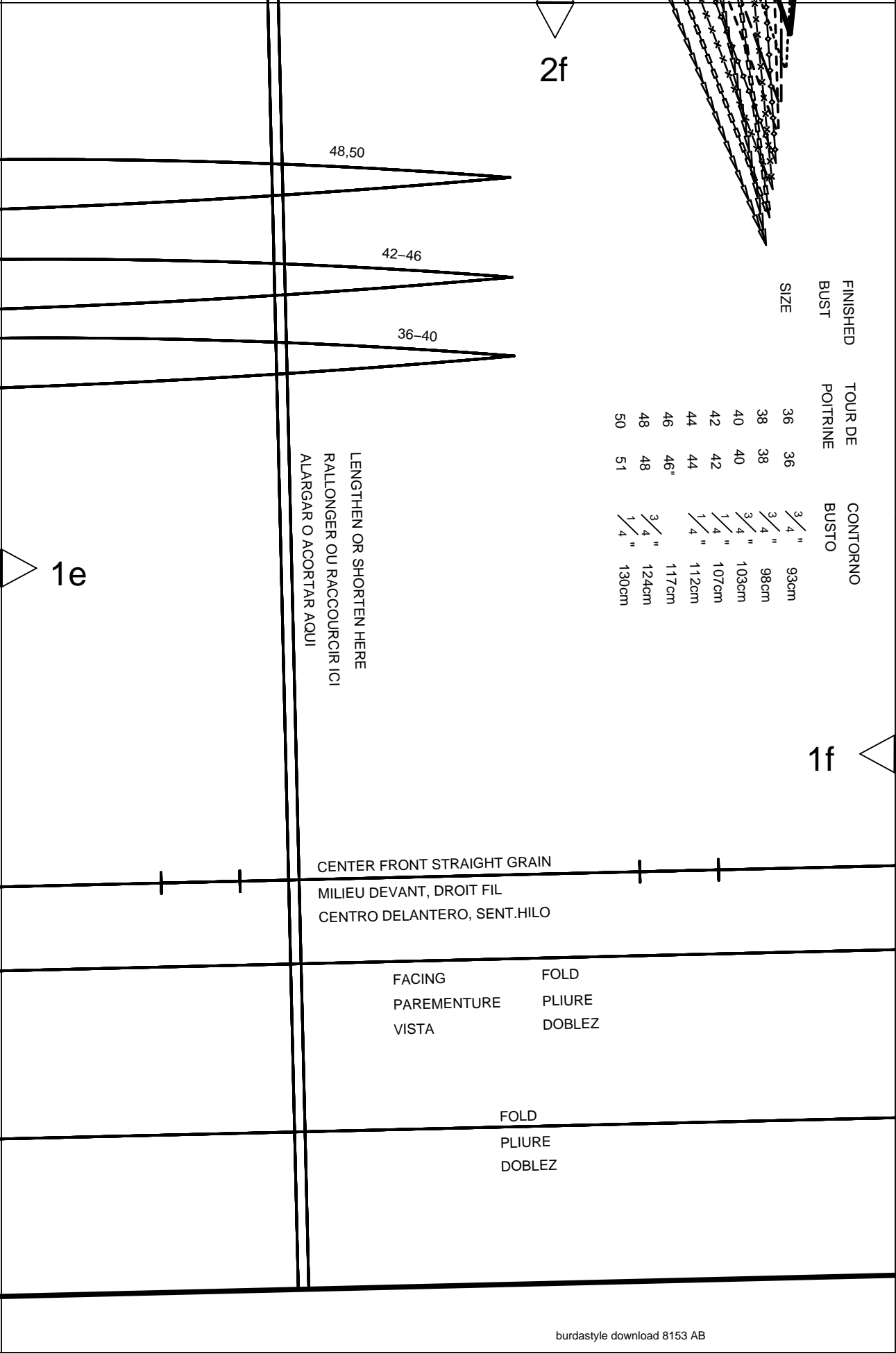
1e

1d

Burda
STYLE
www.burdastyle.com

WAIST
TAILLE
CINTURA





2f

48,50

42-46

36-40

LENGTHEN OR SHORTEN HERE
 RALLONGER OU RACCOURCIR ICI
 ALARGAR O ACORTAR AQUI

FINISHED BUST	TOUR DE POITRINE	CONTORNO BUSTO
36	36	3/4" 93cm
38	38	3/4" 98cm
40	40	3/4" 103cm
42	42	1/4" 107cm
44	44	1/4" 112cm
46	46"	3/4" 117cm
48	48	1/4" 124cm
50	51	1/4" 130cm

1e

1f

CENTER FRONT STRAIGHT GRAIN
 MILIEU DEVANT, DROIT FIL
 CENTRO DELANTERO, SENT.HILO

FACING FOLD
 PAREMENTURE PLIURE
 VISTA DOBLEZ

FOLD
 PLIURE
 DOBLEZ

1g

LENGTHEN OR SHORTEN HERE
RALLONGER OU RACCOURCIR ICI
ALARGAR O ACORTAR AQUI

1

FRONT
DEVANT
DELANTERO

A,B



SEAM ALLOWANCE INCLUDED
AVEC VALEUR DE COUTURE
CON MARGEN DE COSTURA
(1.5cm)

5/8"
8 1 5 3

2g

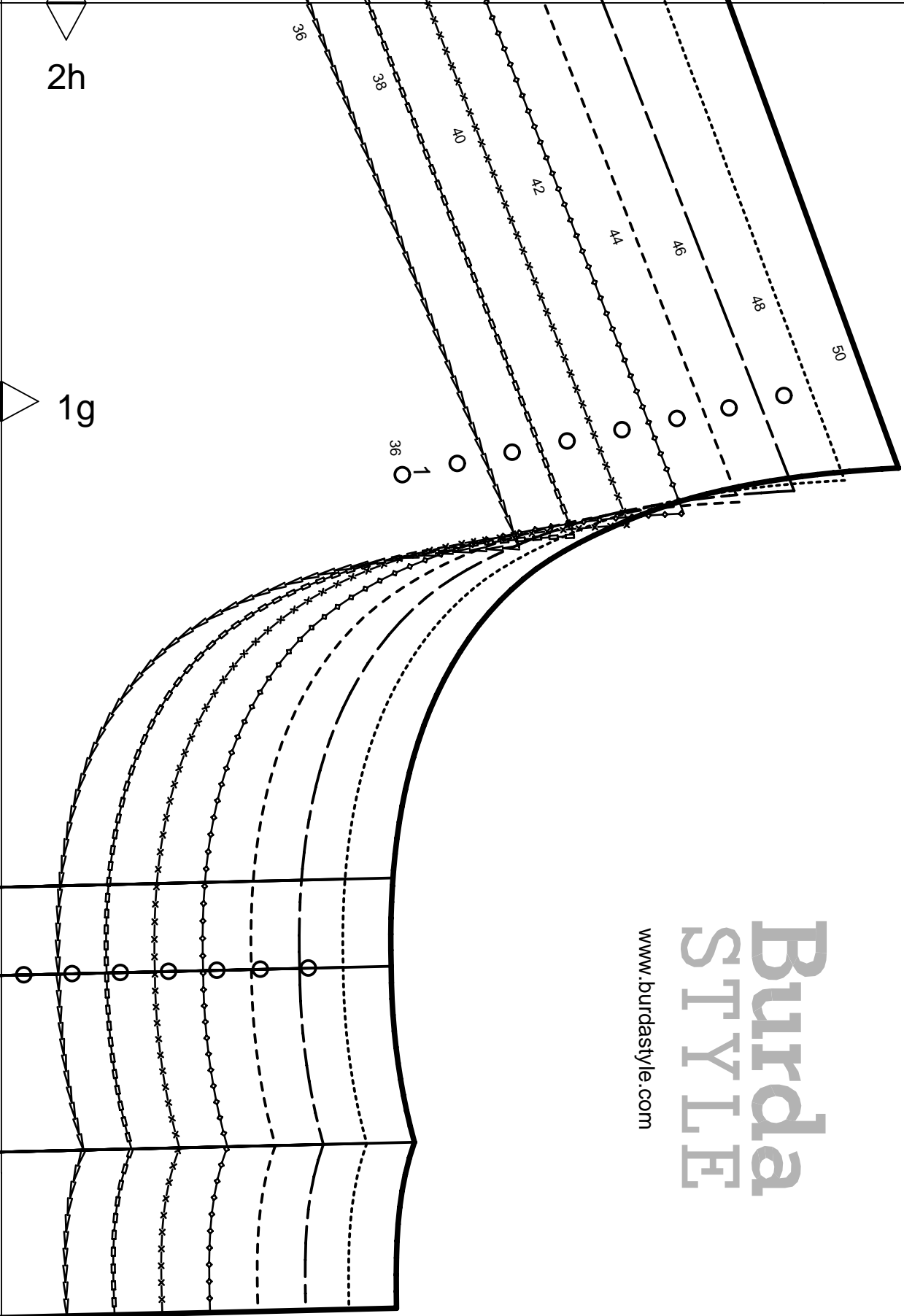
1f

36

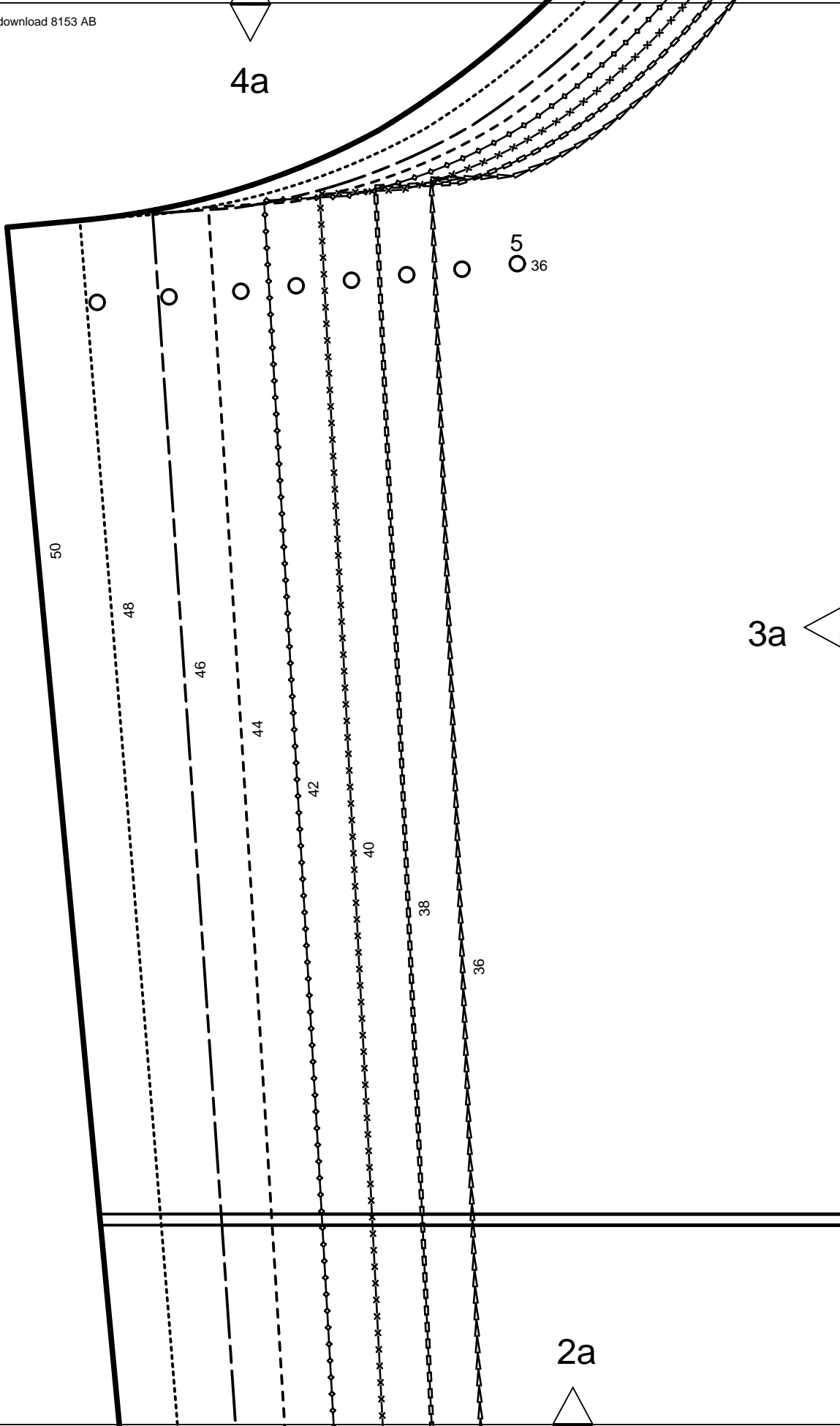
03

2h

1g



Burda
STYLE
www.burdastyle.com



4b

STRAIGHT GRAIN

DROIT FIL
SENTIDO HILO

3

SLEEVE
MANCHE
MANGA

A,B



SEAM ALLOWANCE INCLUDED
AVEC VALEUR DE COUTURE
CON MARGEN DE COSTURA

$\frac{5}{8}$ "
(1,5cm)

8 1 5 3

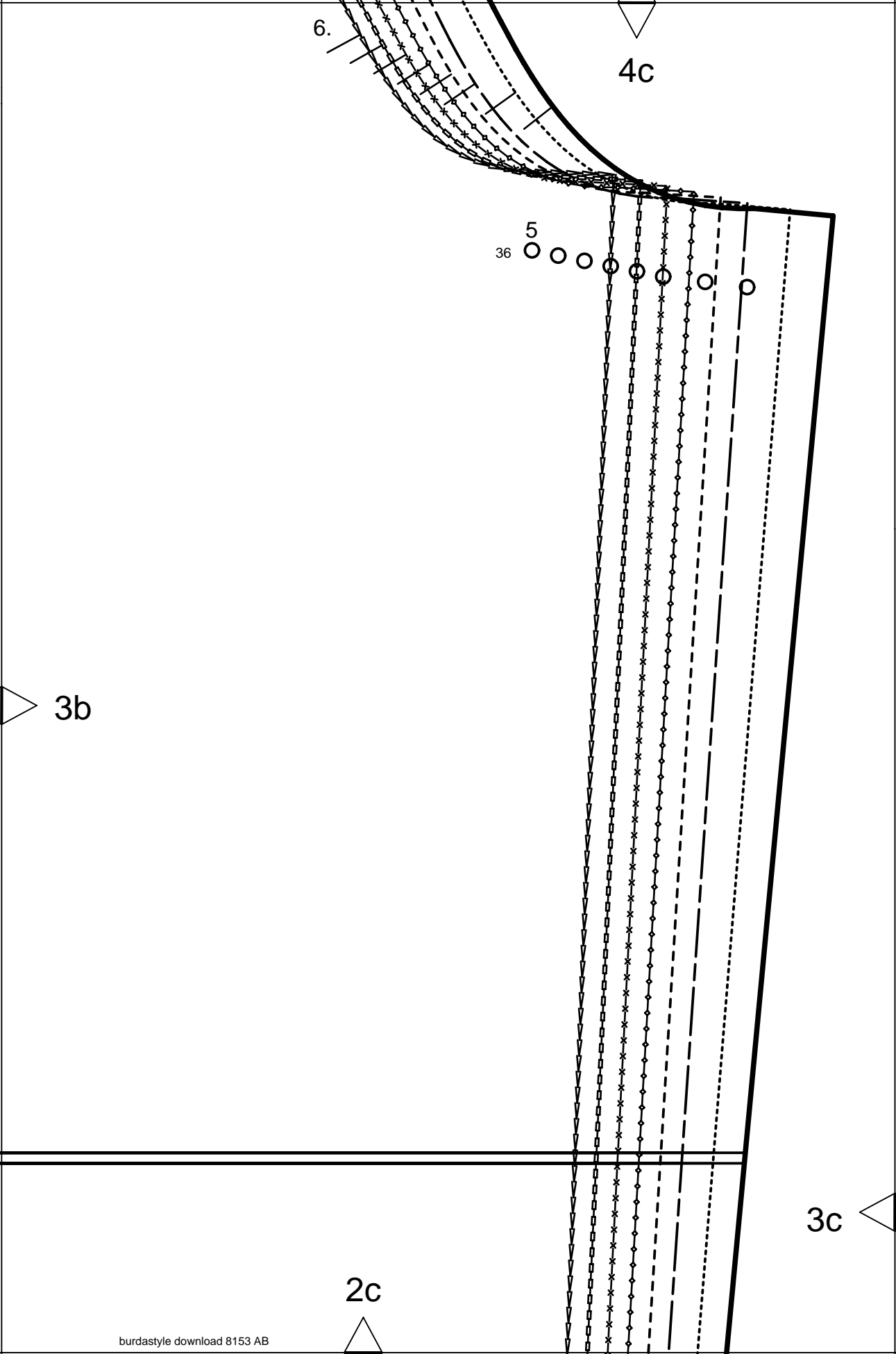
Burda
STYLE

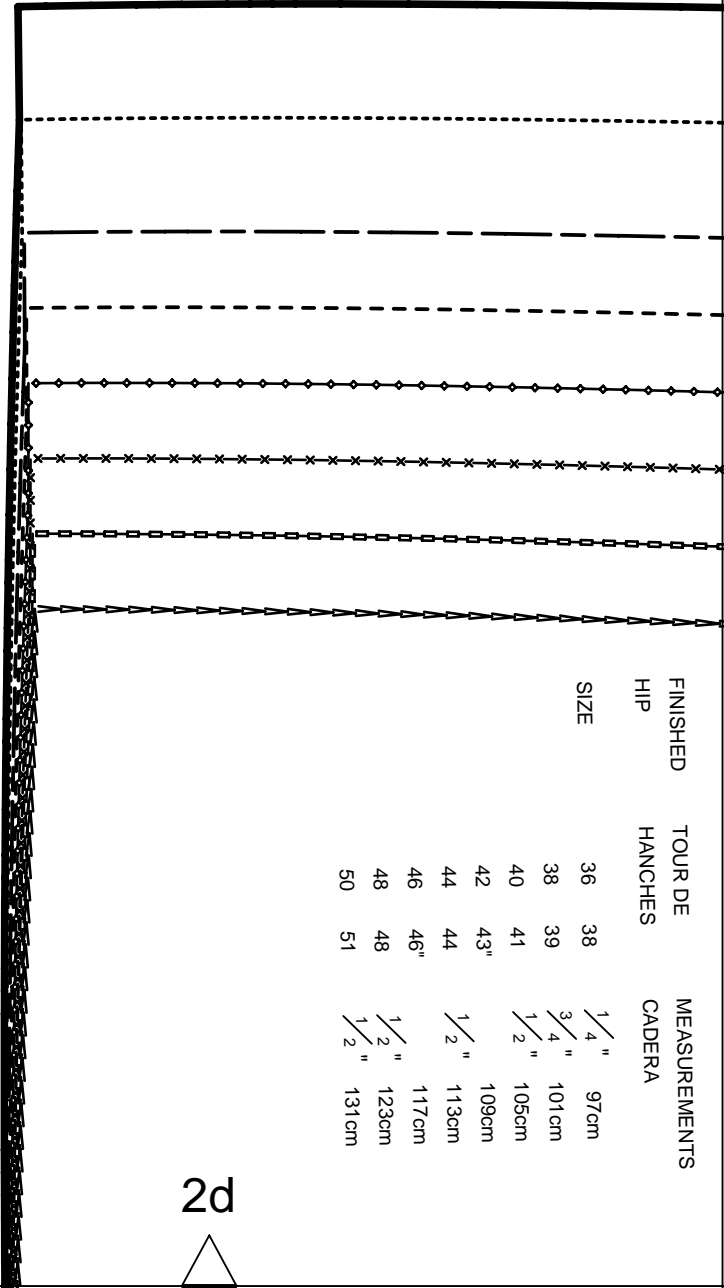
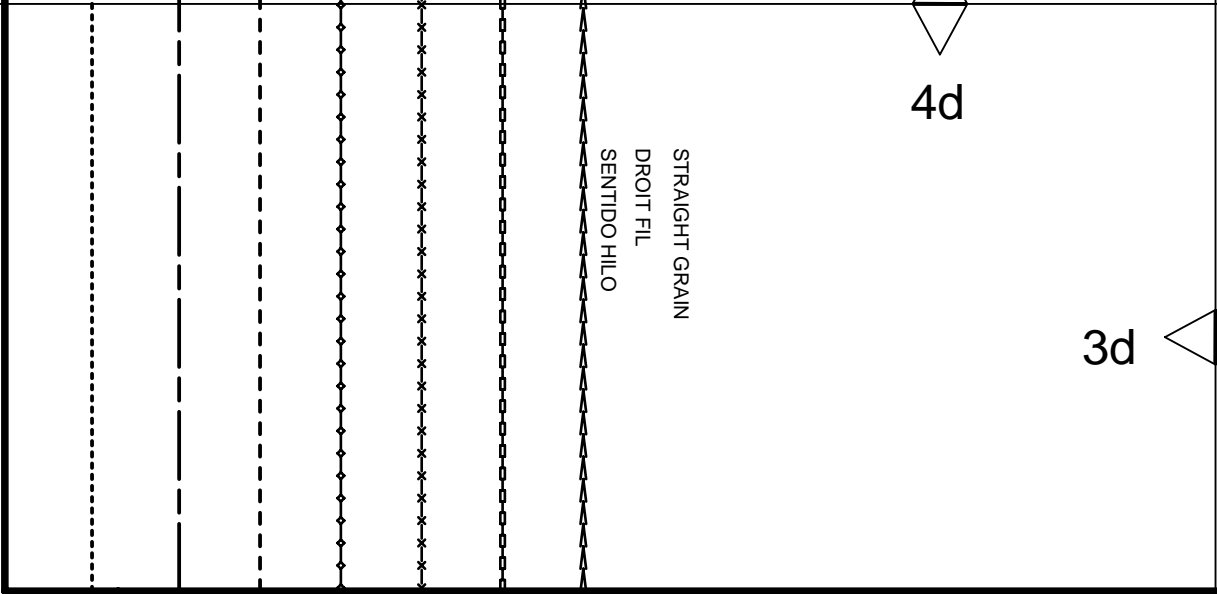
www.burdastyle.com

LENGTHEN OR SHORTEN HERE
RALLONGER OU RACCOURCIR ICI
ALARGAR O ACORTAR AQUI

2b

3b



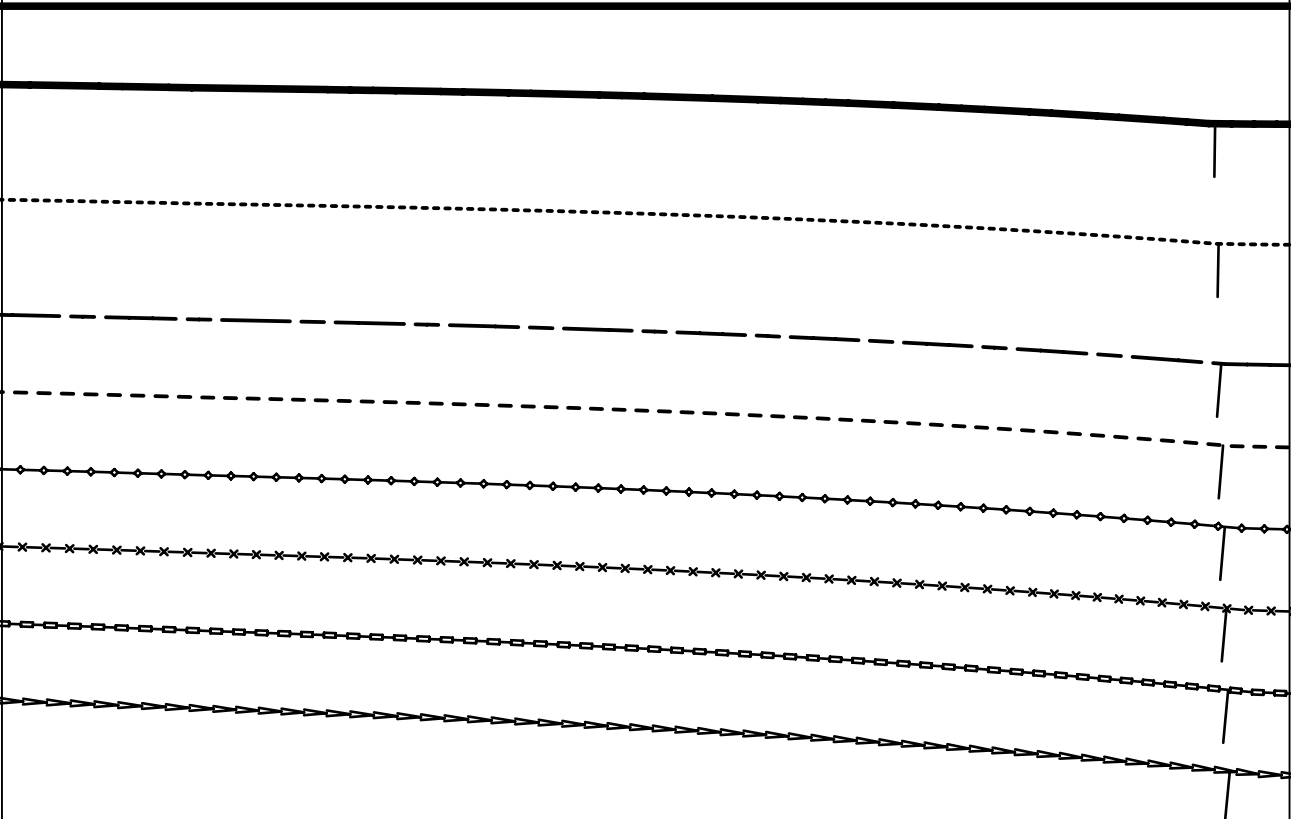


FINISHED HIP	TOUR DE HANCHES	MEASUREMENTS CADERA
SIZE 36	38	1/4" 97cm
38	39	3/4" 101cm
40	41	1/2" 105cm
42	43"	109cm
44	44	1/2" 113cm
46	46"	117cm
48	48	1/2" 123cm
50	51	1/2" 131cm

3c

4e

3d



3e

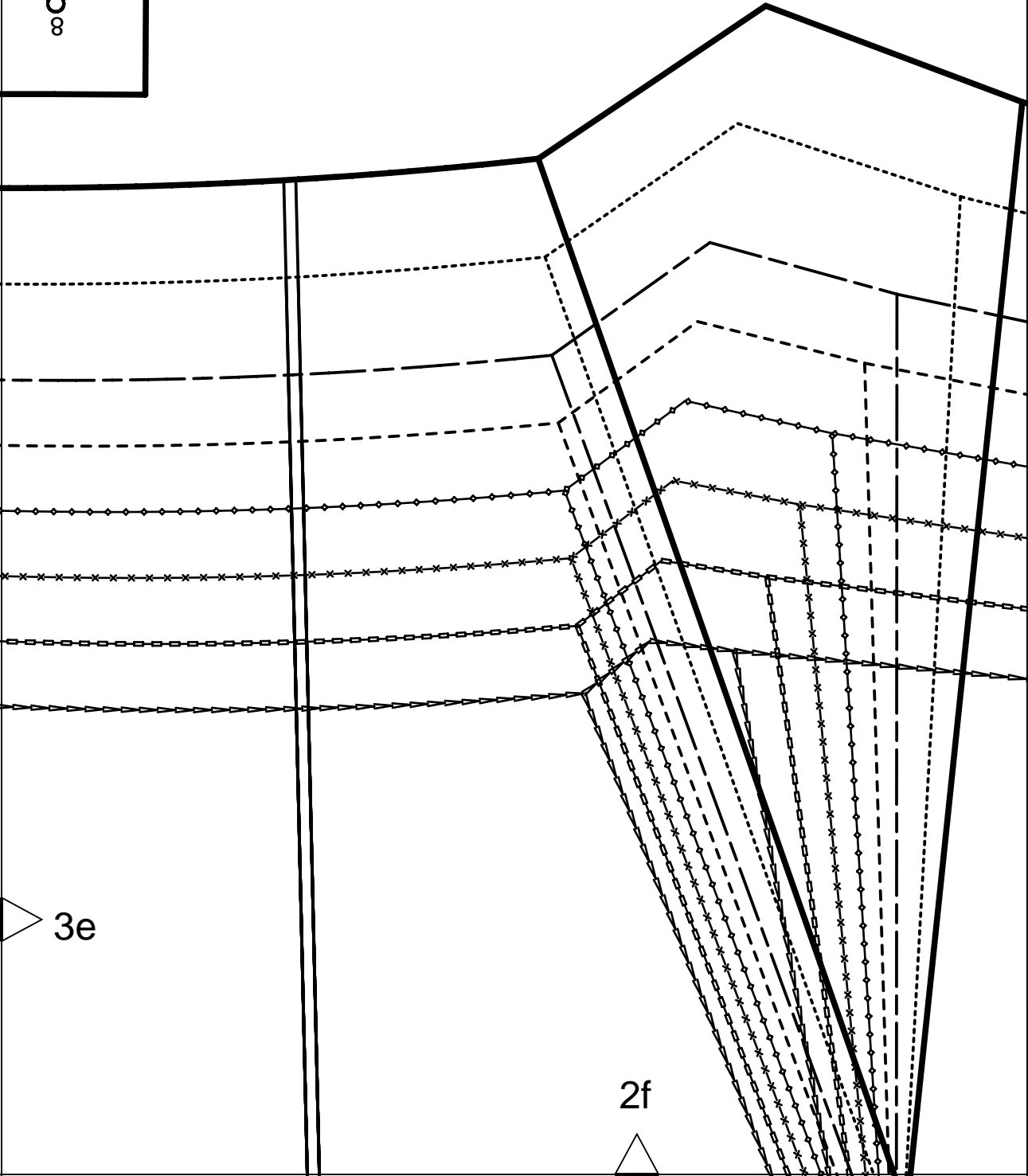
2e



4f

3f

∞
O

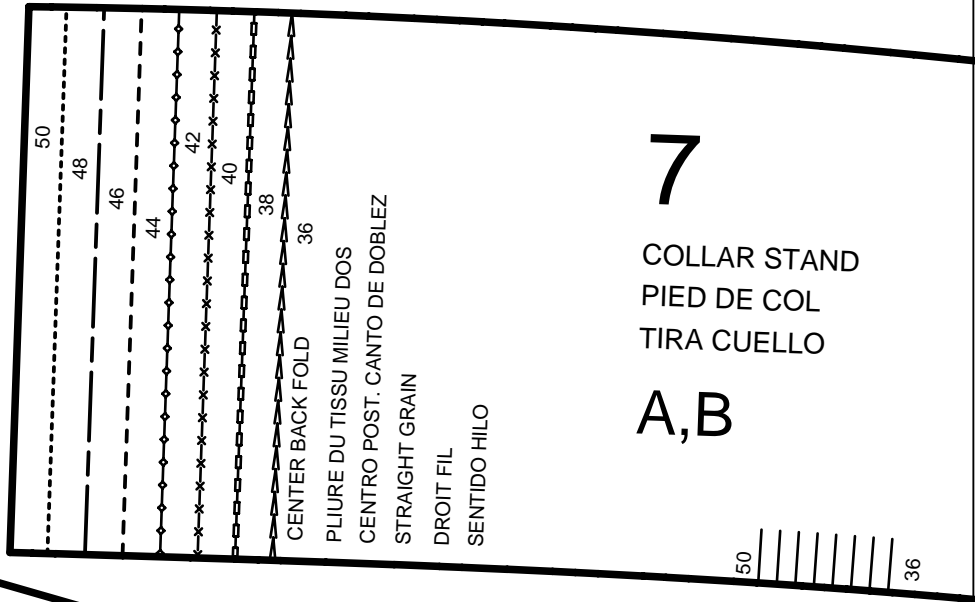


3e

2f

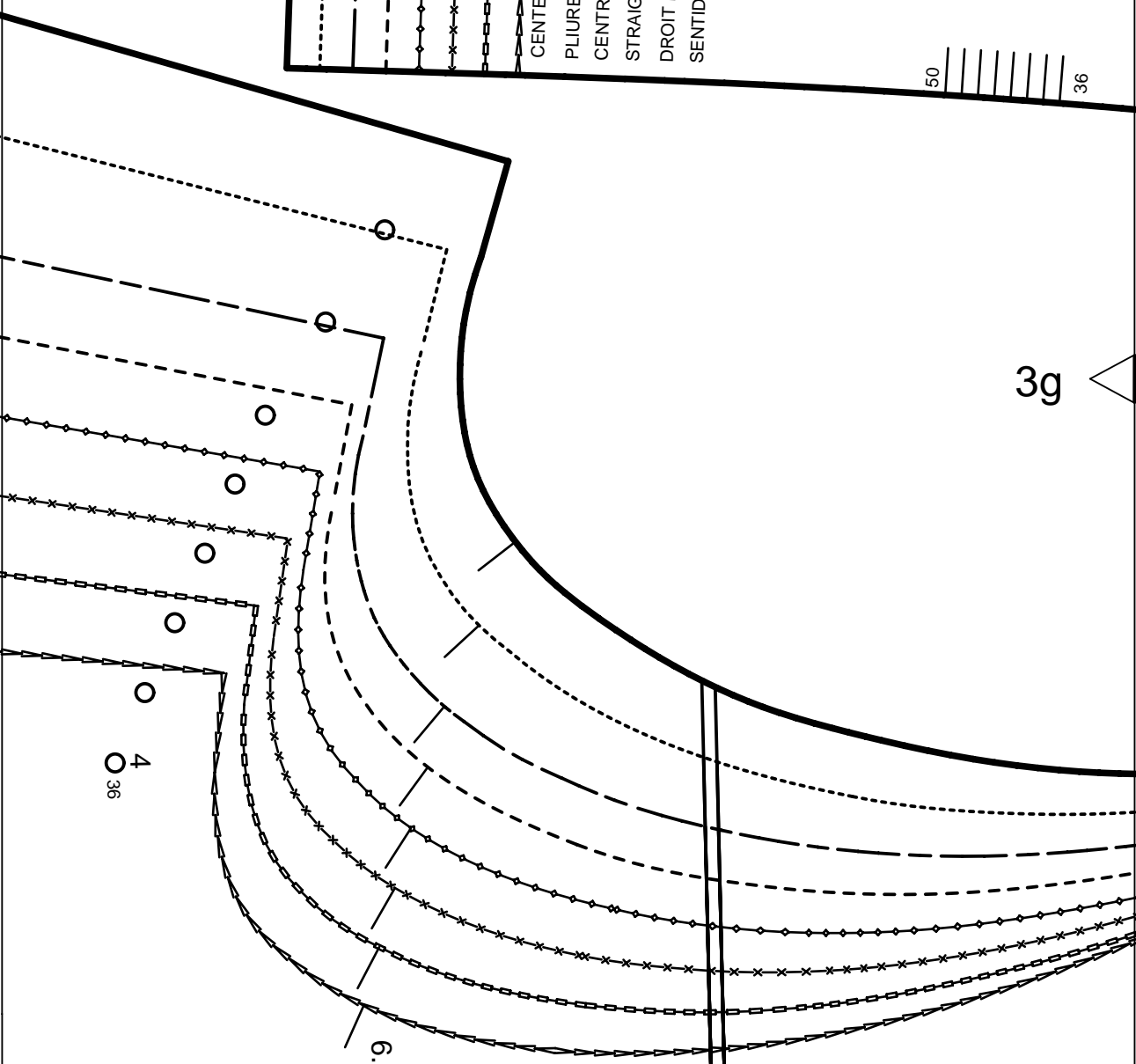
4g

3f



CENTER BACK FOLD
 PLIURE DU TISSU MILIEU DOS
 CENTRO POST. CANTO DE DOBLEZ
 STRAIGHT GRAIN
 DROIT FIL
 SENTIDO HILO

3g



2g

4h



ON THE FOLD
DANS LA PLIURE DU TISSU
CON CANTO DOBLADO

5/8"
(1,5cm)

SEAM ALLOWANCE INCLUDED
AVEC VALEUR DE COUTURE
CON MARGEN DE COSTURA

8153

2

CENTER FRONT

MILIEU DEVANT

CENTRO DELANTERO

3

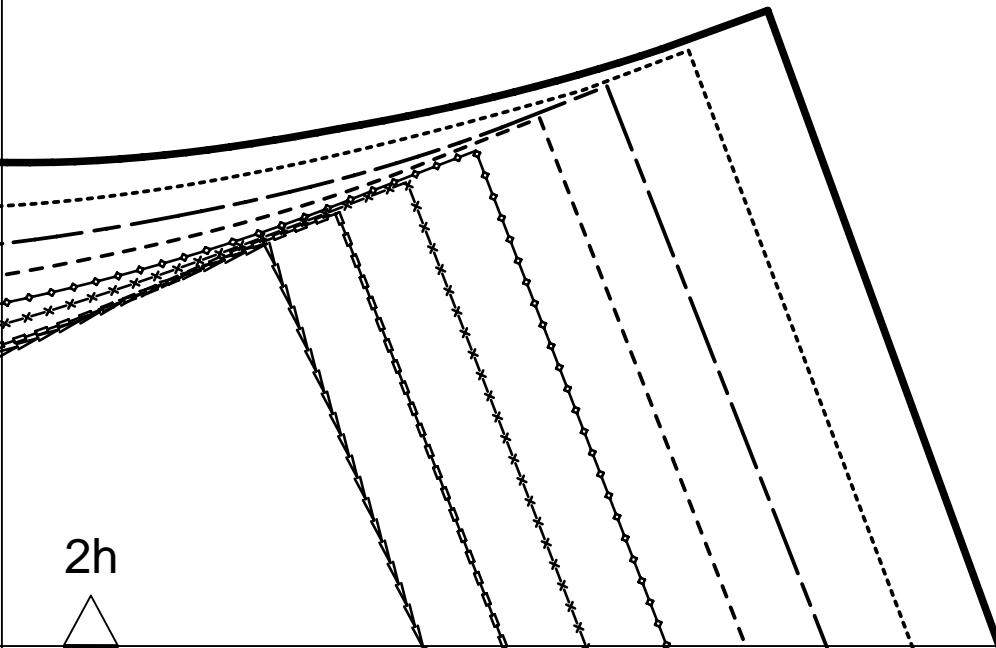


Burda
STYLE

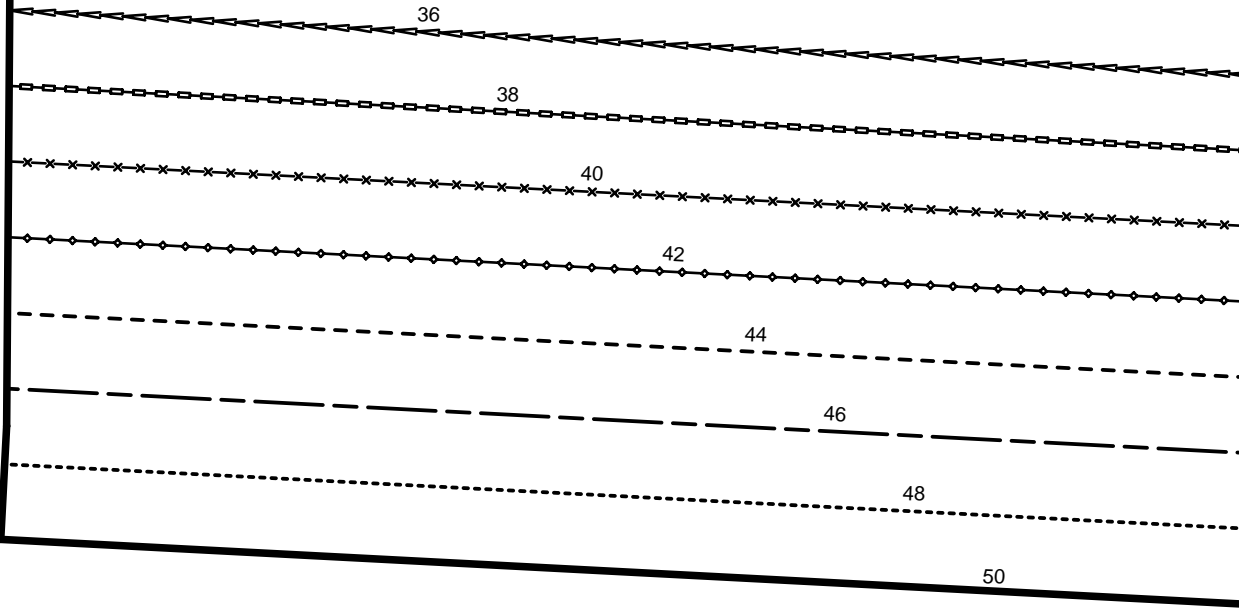
www.burdastyle.com

3g

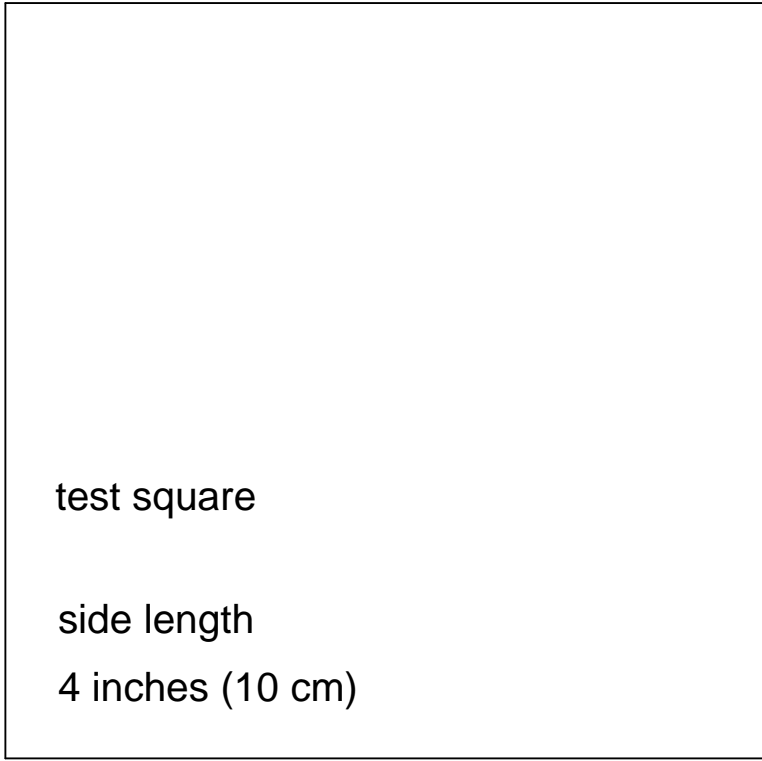
2h



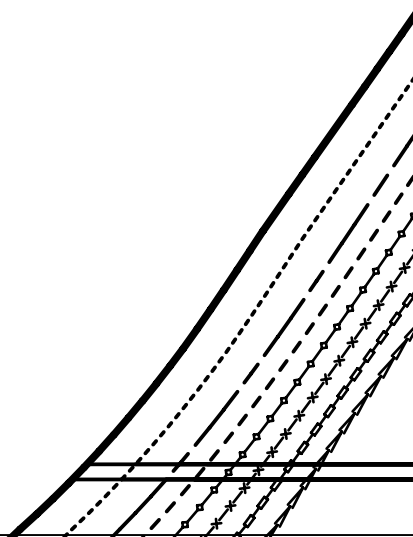
6a



5a

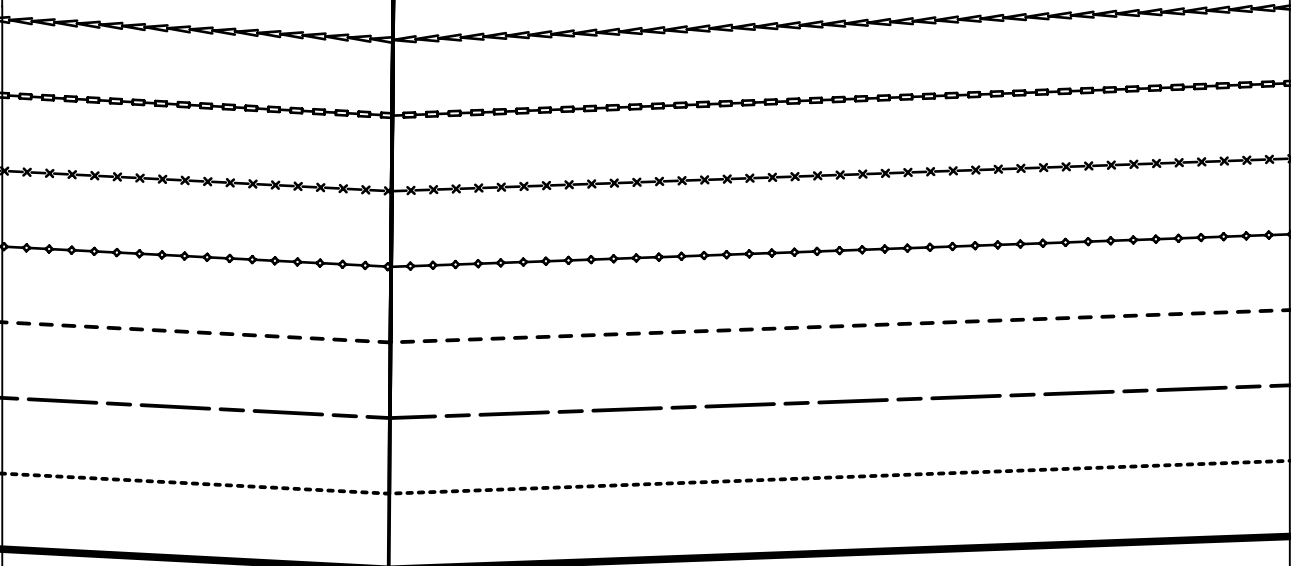


4a



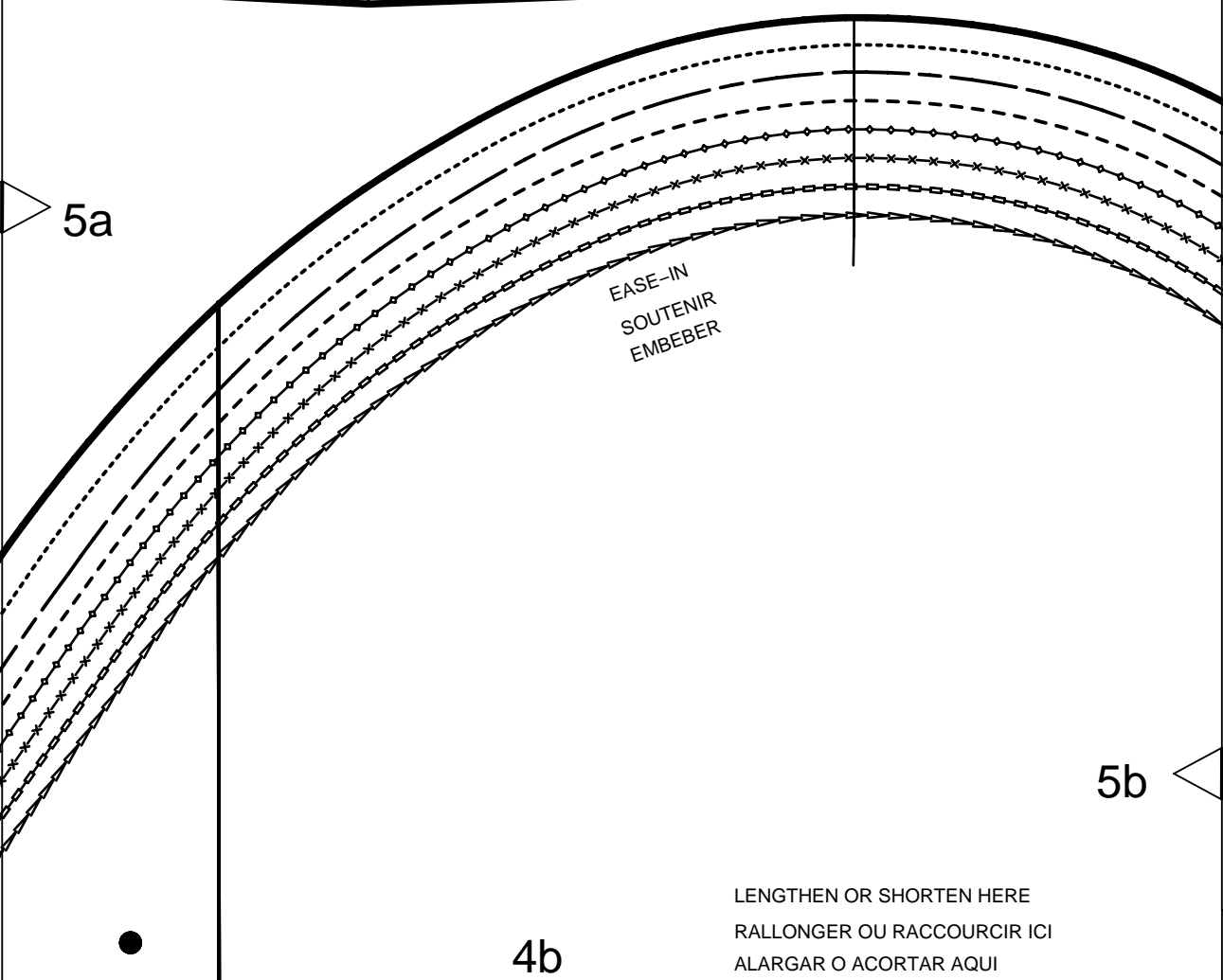
6b

FOLD
PLIURE
DOBLEZ



5a

EASE-IN
SOUTENIR
EMBEBER

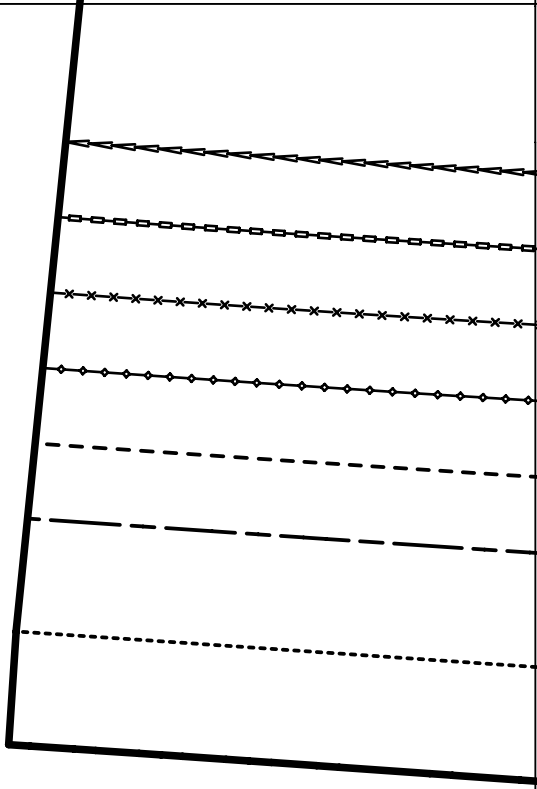
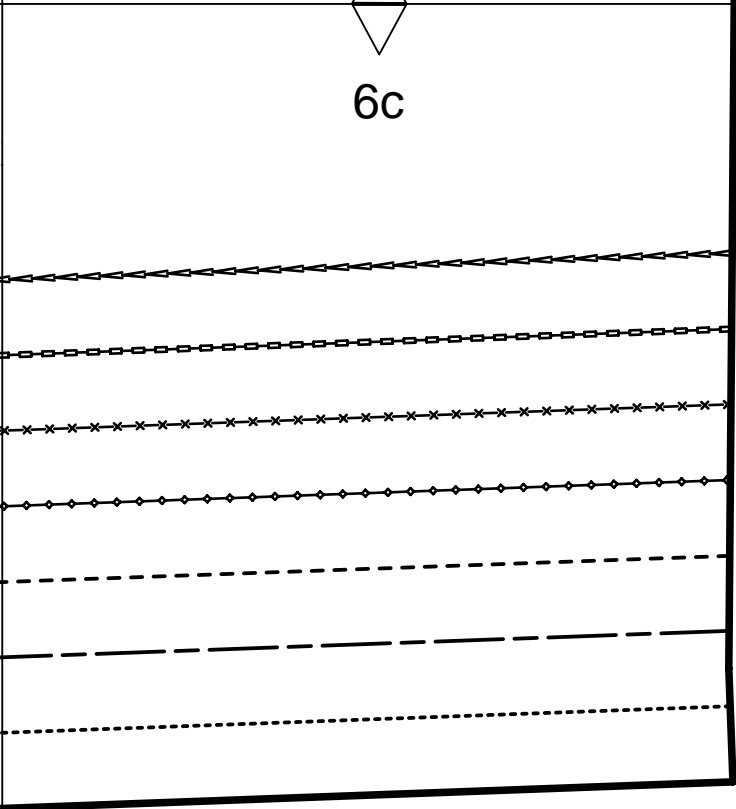


5b

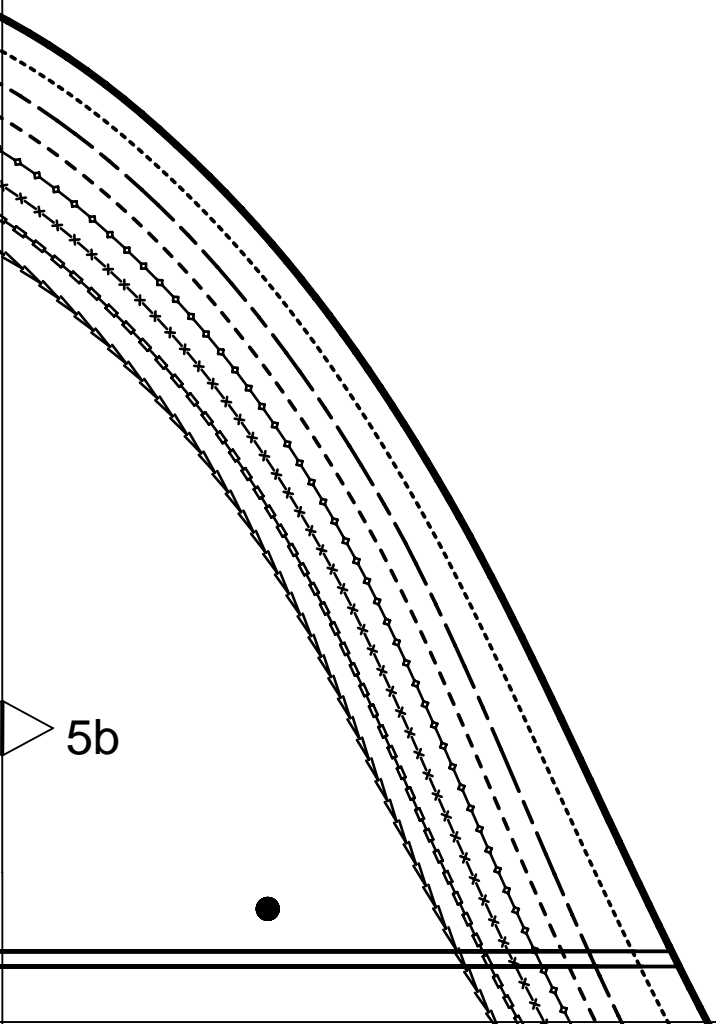
4b

LENGTHEN OR SHORTEN HERE
RALLONGER OU RACCOURCIR ICI
ALARGAR O ACORTAR AQUI

6c



5c

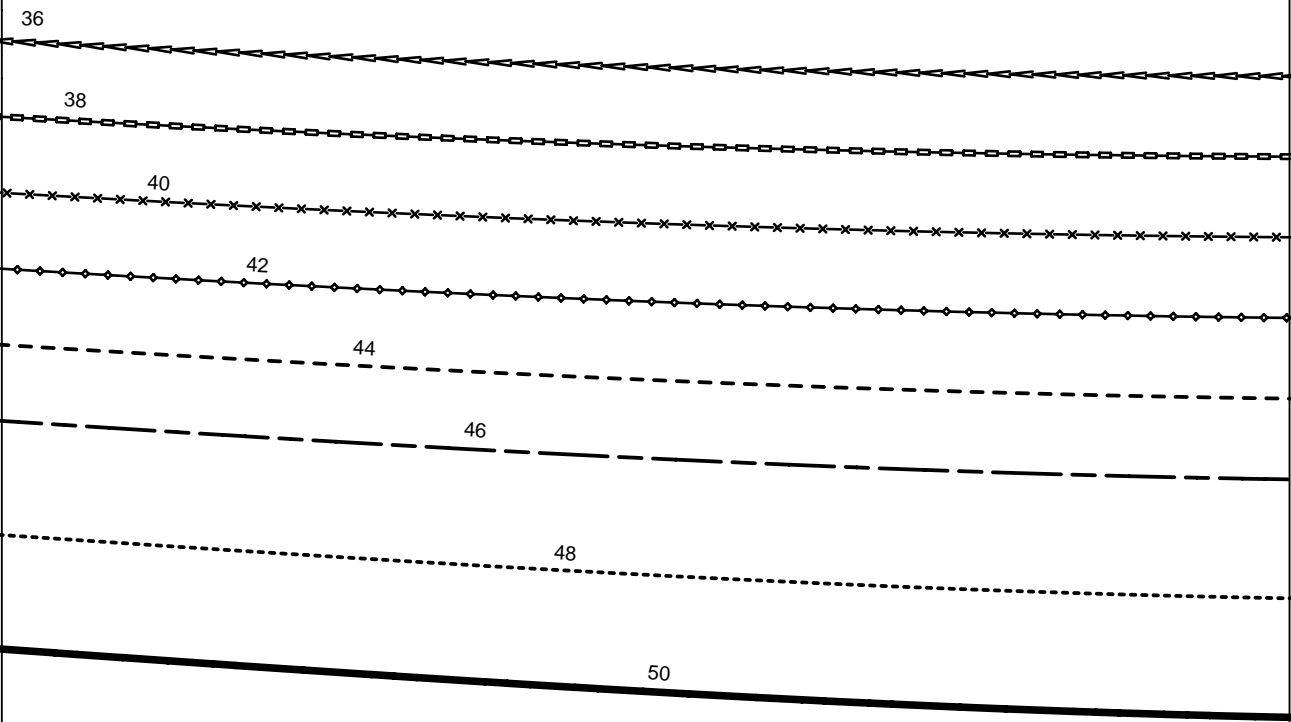


5b

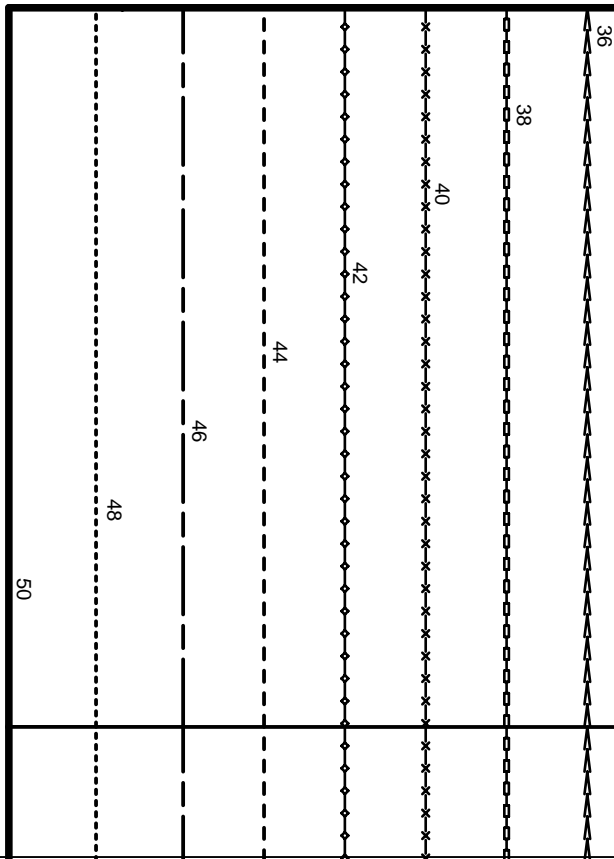
4c



6d



5c

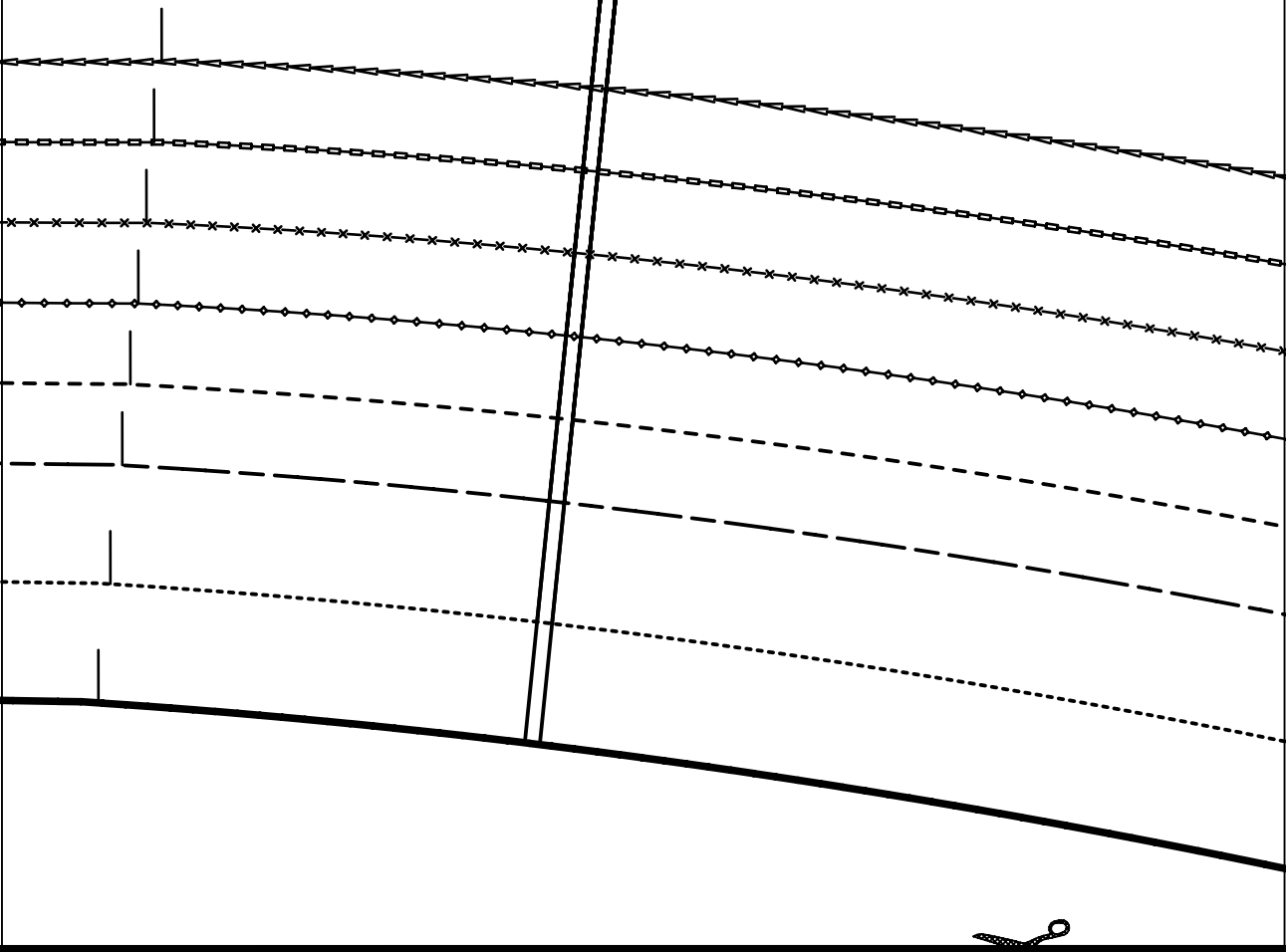


www.burdastyle.com
Burda
STYLE

5d

4d

6e



8 1 5 3

SEAM ALLOWANCE INCLUDED
 AVEC VALEUR DE COUTURE
 CON MARGEN DE COSTURA (1.5cm)

5/8"



5d

5e

B
 CUFF
 POIGNET
 PUÑO

8

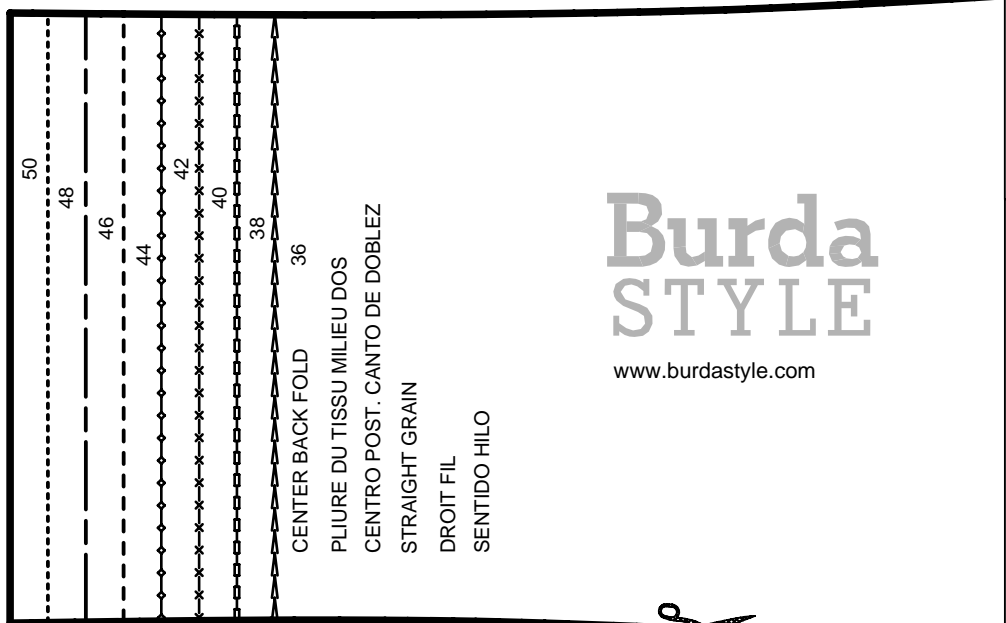
FOLD
 PLIURE
 DOBLEZ

4e

6f

36
4

5f



Burda STYLE

www.burdastyle.com



4f

6g

5f

6

COLLAR
COL
CUELLO

A,B



2x

ON THE FOLD
DANS LA PLIURE DU TISSU
CON CANTO DOBLADO

5/8"

(1,5cm)

SEAM ALLOWANCE INCLUDED
AVEC VALEUR DE COUTURE
CON MARGEN DE COSTURA

8 1 5 3

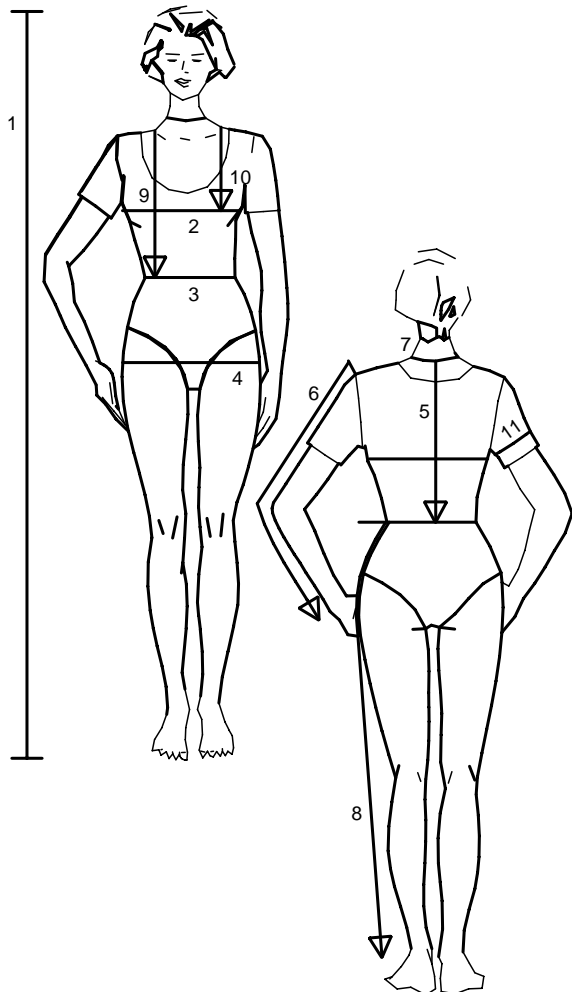
2
0

4g

5g

6h

Size Taille Talla		32	34	36	38	40	42	44	46	48	50	52	54	56	58	60
1	inches	66 1/4	66 1/4	66 1/4	66 1/4	66 1/4	66 1/4	66 1/4	66 1/4	66 1/4	66 1/4	66 1/4	66 1/4	66 1/4	66 1/4	66 1/4
	cm	168	168	168	168	168	168	168	168	168	168	168	168	168	168	168
2	inches	30	31 1/2	33	34 3/4	36 1/4	37 3/4	39 1/2	41	43 1/2	45 1/2	48	50 1/2	52 3/4	55 1/4	57 1/2
	cm	76	80	84	88	92	96	100	104	110	116	122	128	134	140	146
3	inches	23	24 1/2	26	27 3/4	29 1/4	30 3/4	32 1/2	34	36 1/4	38 3/4	41	43 1/2	45 1/2	48	50 1/2
	cm	58	62	66	70	74	78	82	86	92	98	104	110	116	122	128
4	inches	32 1/2	34	35 1/2	37	38 3/4	40 1/4	41 3/4	43 1/2	45 1/2	48	50 1/2	52 3/4	55 1/4	57 1/2	60
	cm	82	86	90	94	98	102	106	110	116	122	128	134	140	146	152
5	inches	15 3/4	16	16 1/4	16 1/2	16 1/2	16 3/4	17	17 1/4	17 1/4	17 1/2	17 3/4	18	18 1/4	18 1/2	18 1/2
	cm	40	40,5	41	41,5	42	42,5	43	43,5	44	44,5	45	45,5	46	46,5	47
6	inches	23 1/4	23 1/4	23 1/4	23 3/4	23 3/4	24	24	24	24	24 1/2	24 1/2	24 1/2	24 3/4	24 3/4	24 3/4
	cm	59	59	59	60	60	61	61	61	61	62	62	62	63	63	63
7	inches	13	13 1/2	14 1/4	14 1/2	14 3/4	15	15 1/2	15 3/4	16 1/4	16 1/2	17	17 1/4	17 3/4	18 1/4	18 1/2
	cm	33	34	35	36	37	38	39	40	41	42	43	44	45	46	47
8	inches	39 3/4	40 1/4	40 1/4	40 3/4	41	41	41 1/2	41 1/2	41 1/2	41 3/4	41 3/4	41 3/4	42 1/4	42 1/2	42 1/2
	cm	101	102	102	103	104	104	105	105	105	106	106	106	107	108	108
9	inches	16 1/2	17	17 1/4	17 3/4	18 1/4	18 1/2	19	19 1/4	19 3/4	20 1/4	20 1/2	21	21 1/4	21 3/4	22 1/4
	cm	42	43	44	45	46	47	48	49	50	51	52	53	54	55	56
10	inches	9 1/2	9 7/8	10 1/4	10 3/4	11 1/8	11 1/2	11 7/8	12 1/4	12 3/4	13	13 1/2	14 1/4	14 1/2	14 3/4	15
	cm	24	25	26	27	28	29	30	31	32	33	34	35	36	37	38
11	inches	9 7/8	10 1/4	10 3/4	11 1/8	11 1/2	11 7/8	12 1/4	12 3/4	13 1/2	14 1/2	15	15 3/4	16 1/2	17 1/4	18 1/4
	cm	25	26	27	28	29	30	31	32	34	36	38	40	42	44	46



englisch

1. Height
2. Bust
3. Waist
4. Hip
5. Back length
6. Sleeve length
7. Neck width
8. Side leg length
9. Front waist length
10. Bust point
11. Upper arm circumf.

For dresses, blouses, coats and jackets select size according to bust measurement, for trousers and skirts according to hip measurement!

All burda patterns are prepared with ease allowance appropriate for style in question.

français

1. Taille
2. Tour de poitrine
3. Tour de taille
4. Tour des hanches
5. Long. du dos
6. Longueur de manche
7. Tour de cou
8. Long. côté pantalon
9. Long. taille devant
10. Profondeur de poitrine
11. Tour du bras

Robes, corsages, manteaux et vestes seront choisis d'après votre tour de poitrine les pantalons et les jupes d'après votre tour de hanches!

Tous les patrons sont établis avec l'aisance nécessaire selon le genre du modèle.

español

1. Estatura
2. Contorno busto
3. Contorno cintura
4. Contorno cadera
5. Largo espalda
6. Largo manga
7. Contorno cuello
8. Largo lateral del pantalón
9. Largo talle delantero
10. Altura de pecho
11. Cont. de brazo

La talla para los vestidos, blusas, abrigos y chaquetas, se determina de acuerdo con el contorno del busto. Los pantalones y las faldas, de acuerdo con el contorno de las caderas.

En el patrón-Burda se incluyen los márgenes para la holgura necesaria.

5g

4h

7a

5

CUFF
POIGNET
PUÑO

A

 2 x

SEAM ALLOWANCE INCLUDED
AVEC VALEUR DE COUTURE
CON MARGEN DE COSTURA
 $\frac{5}{8}$ "
(1.5cm)

8 1 5 3

Burda
STYLE

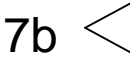
www.burdastyle.com



6a



7a

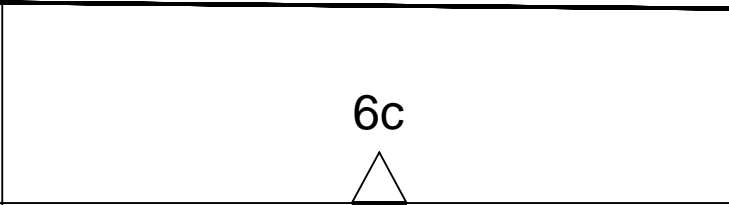
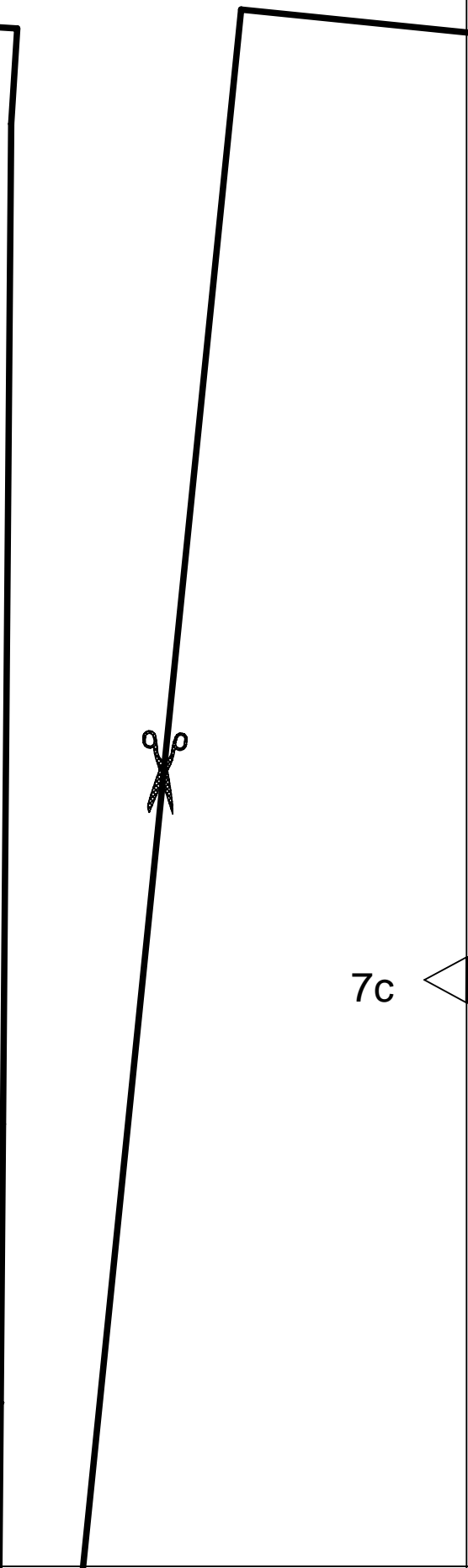
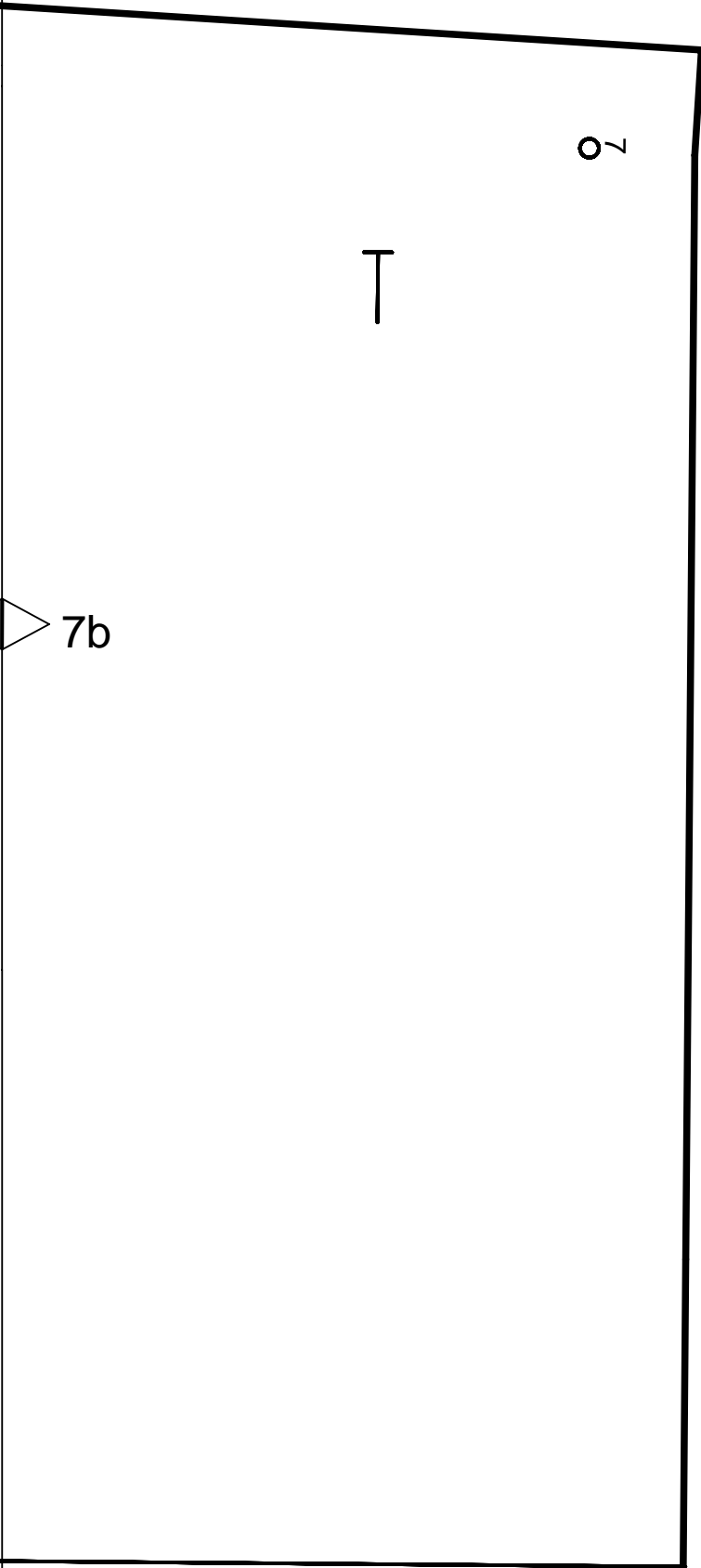


7b

STRAIGHT GRAIN
DROIT FIL
SENTIDO HILO

6b



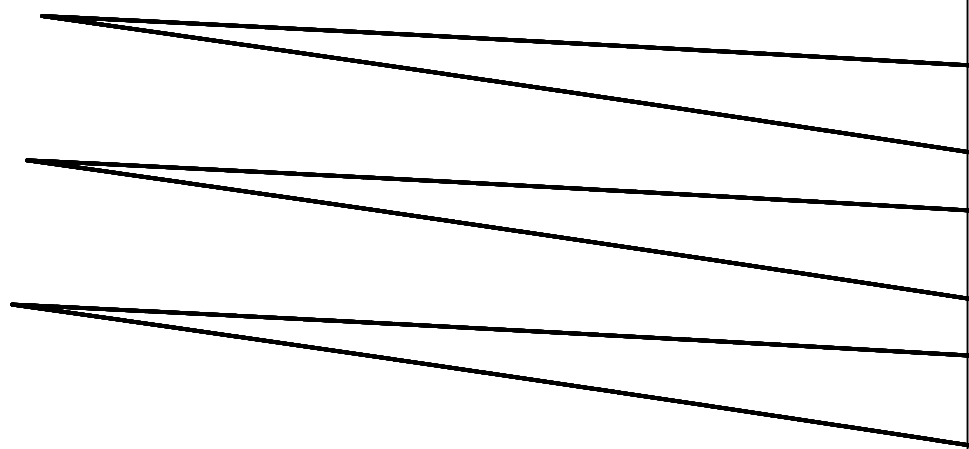


CENTER BACK FOLD STRAIGHT GRAIN
PLIURE DU TISSU MILIEU DOS DROIT FIL
CENTRO POSTERIOR DOBLEZ DIR.HILO

7d

7c

6d



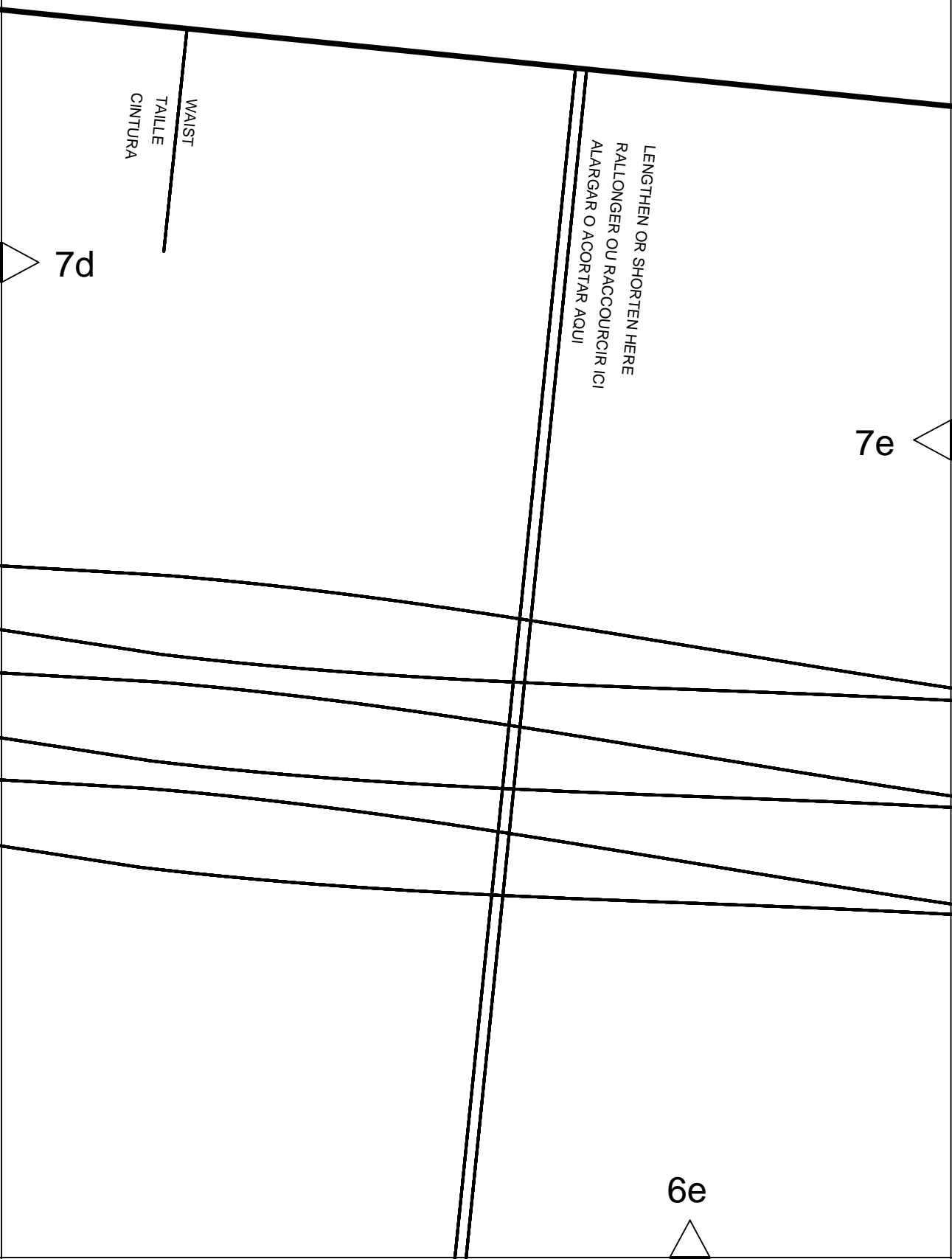
WAIST
TAILLE
CINTURA

LENGTHEN OR SHORTEN HERE
RALLONGER OU RACCOURCIR ICI
ALARGAR O ACORTAR AQUI

7d

7e

6e



7f

LENGTHEN OR SHORTEN HERE
RALLONGER OU RACCOURCIR ICI
ALARGAR O ACORTAR AQUI

Burda
STYLE
www.burdastyle.com

7e

36-40

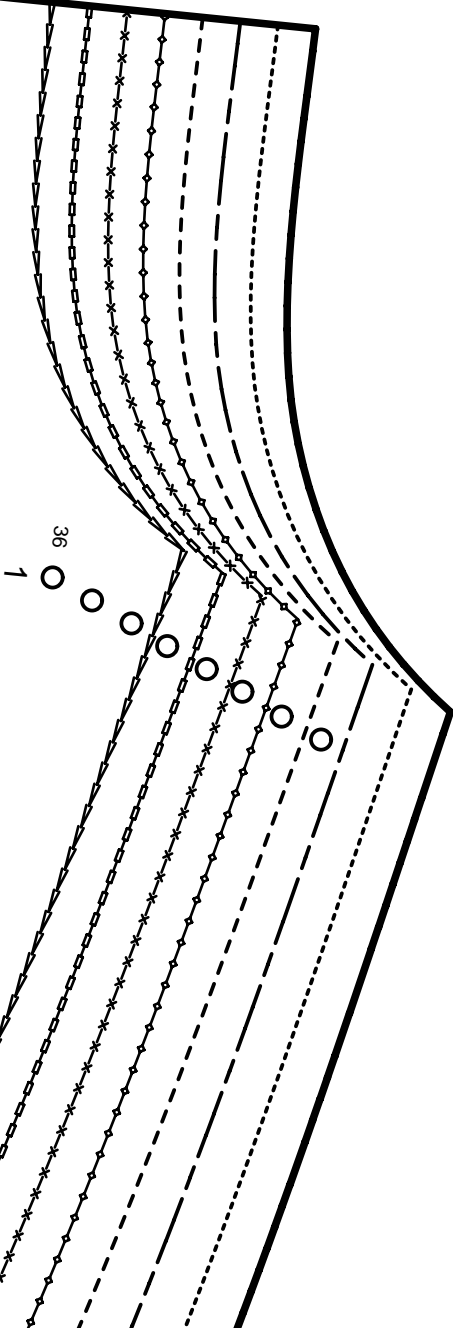
42-46

48,50

6f

7g

7f



2

BACK
DOS
ESPALDA

A,B



1 X

ON THE FOLD
DANS LA PLIURE DU TISSU
CON CANTO DOBLADO

5/8"

(1,5cm)

SEAM ALLOWANCE INCLUDED
AVEC VALEUR DE COUTURE
CON MARGEN DE COSTURA

8153

EASE-IN
SOUTENIR
EMBERBER

6g

KEY TO SYMBOLS

LEGENDE

INTERPRETACION DE LOS SIMBOLOS



SYMBOL FOR STITCHING LINES
REMARQUE CONCERNANT LES LIGNES DE PIQUES
INDICACION PARA LINEAS DE PESPUNTE



SEAM ATTACHMENT POINT
POINT DE RACCORD DE LA COUTURE
PUNTO DE AJUSTE DE LA COSTURA



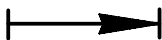
SEAM NUMBERS ARE MATCHING SYMBOLS AND DENOTE
WHERE TWO PIECES SHOULD BE SEWN TOGETHER.
LES CHIFFRES-REPERES INDIQUENT OU ASSEMBLER LES PIECES.
LES CHIFFRES IDENTIQUES COINCIDENT.
LOS NUMEROS DE COSTURA INDICAN DONDE LAS PIEZAS.
LOS MISMOS NUMEROS CONCIDEN.



GATHER BETWEEN THE STARS.
FRONCER ENTRE LES ASTERISQUES.
EMBEBER ENTRE LAS ESTRELLAS.



EASE IN BETWEEN THE DOTS.
SOUTENIR ENTRE LES POINTS.
EMBEBER ENTRE LOS PUNTOS.



POSITION PLEATS IN DIRECTION OF ARROW.
POSER LES PLIS DANS LE SENS DES FLECHES.
PONER LOS PLIEQUES SEGUN LA FLECHA.



SYMBOL INDICATING THE BEGINNING OR END OF VENT.
REPERE DE DEBUT OU DE FIN DE FENTE.
MARCA PARA EL PRINCIPIO O FINAL DE LA ABERTURA.



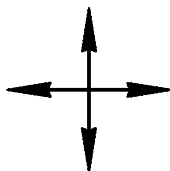
SLASH
FENTE
CORTE



BUTTONHOLE
BOUTONNIERE
OIAL



BUTTON OR SNAP
BOUTON OU BOUTON-PRESSION
BOTON O BROCHE DE PRESION



SEE CUTTING DIAGRAMS FOR STRAIGHT GRAIN OF FABRIC
SENS DU DROIT-FIL VOIR LES PLANS DE COUPE
DIRECCION DEL HILO, VEANSE PLANOS DE CORTE

PATTERN LAYOUTS

PLANS DE COUPE

PLANOS DE CORTE

