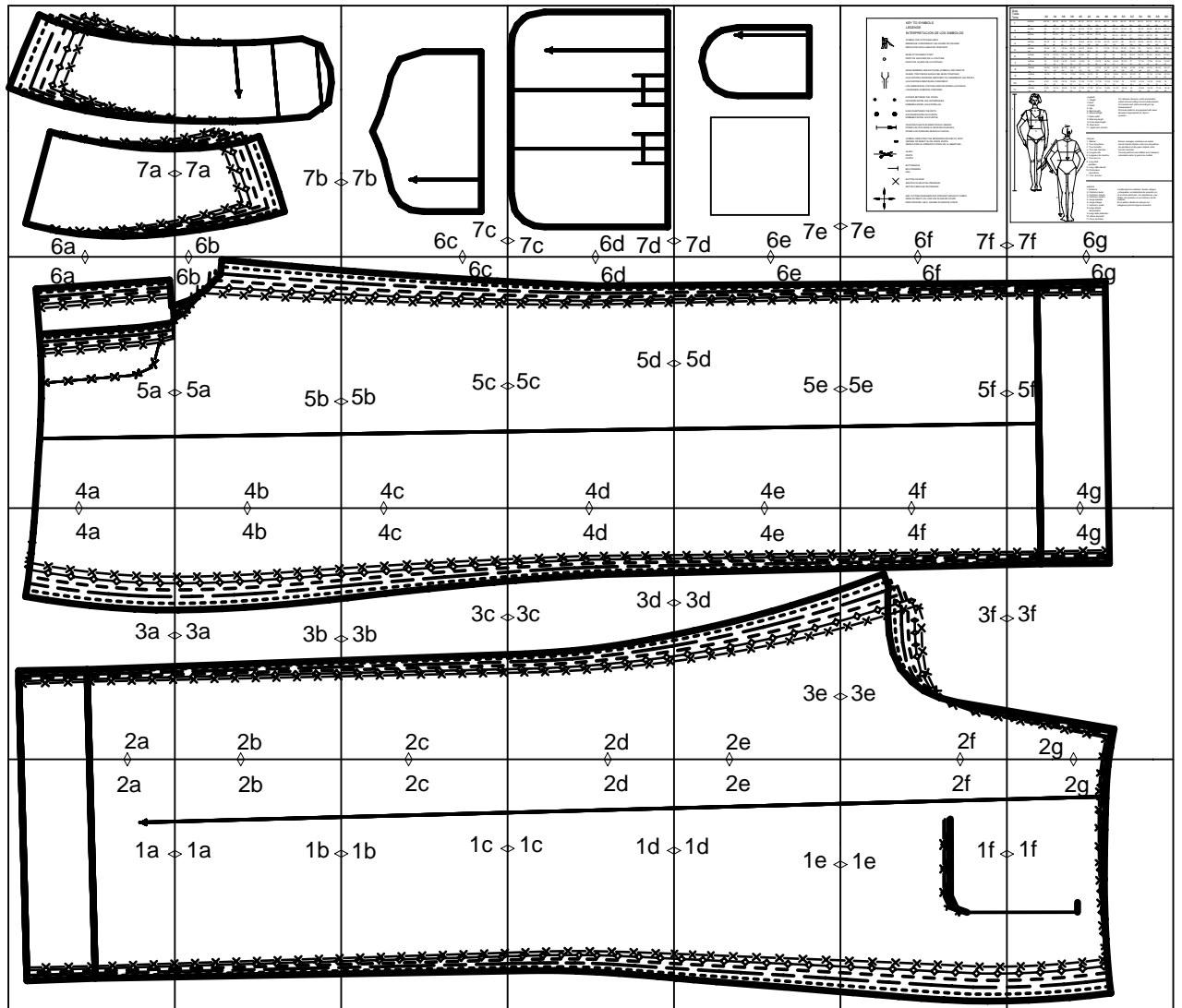


burdastyle download 9175 A

layout drawing



2a

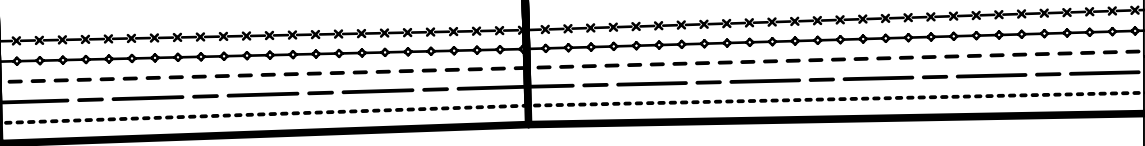


1a

HEM-FOLDLINE

PLIURE DE L'OURLET
DOBLADILLO-LINEA DE DOBLEZ

HEM ALLOWANCE
VALEUR D'OURLET
MARGEN DE DOBLADILLO
 $2\frac{7}{8}$ " (7cm)

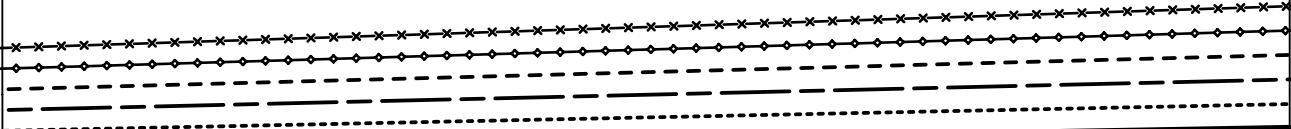


2b

STRAIGHT GRAIN
DROIT FIL
SENTIDO HILO

1a

1b



2c

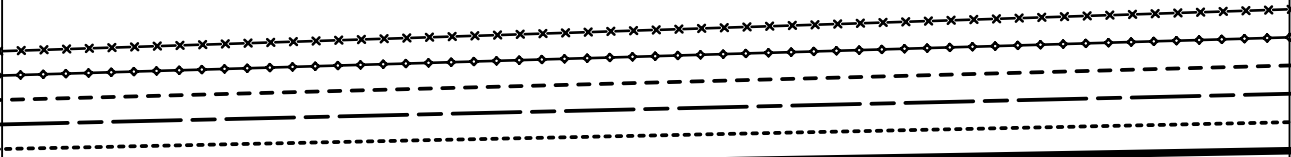
STRAIGHT GRAIN

DROIT FIL

SENTIDO HILO

1b

1c

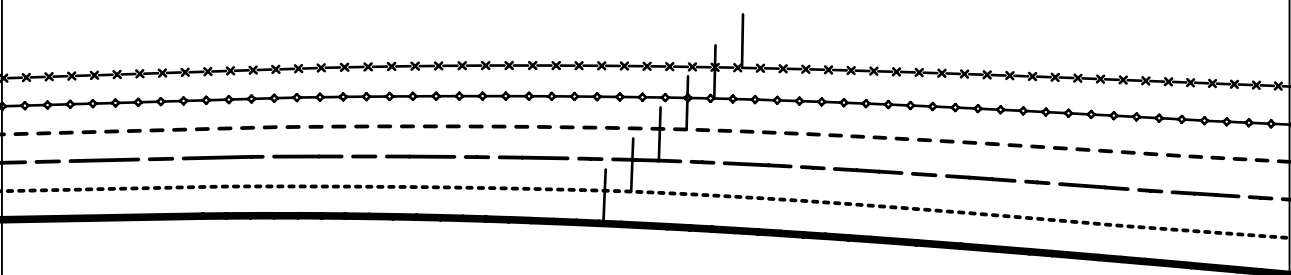


2d

STRAIGHT GRAIN
DROIT FIL
SENTIDO HILO

1c

1d



2e

STRAIGHT GRAIN

DROIT FIL

SENTIDO HILO

1d

5/8" (1.5cm)

SEAM ALLOWANCE INCLUDED
AVEC VALEUR DE COUTURE
CON MARGEN DE COSTURA
9 1 7 5



PANTS, BACK
DOS PANTALON/CULOTTE
PANTALON POST.

2

1e

Burda
STYLE

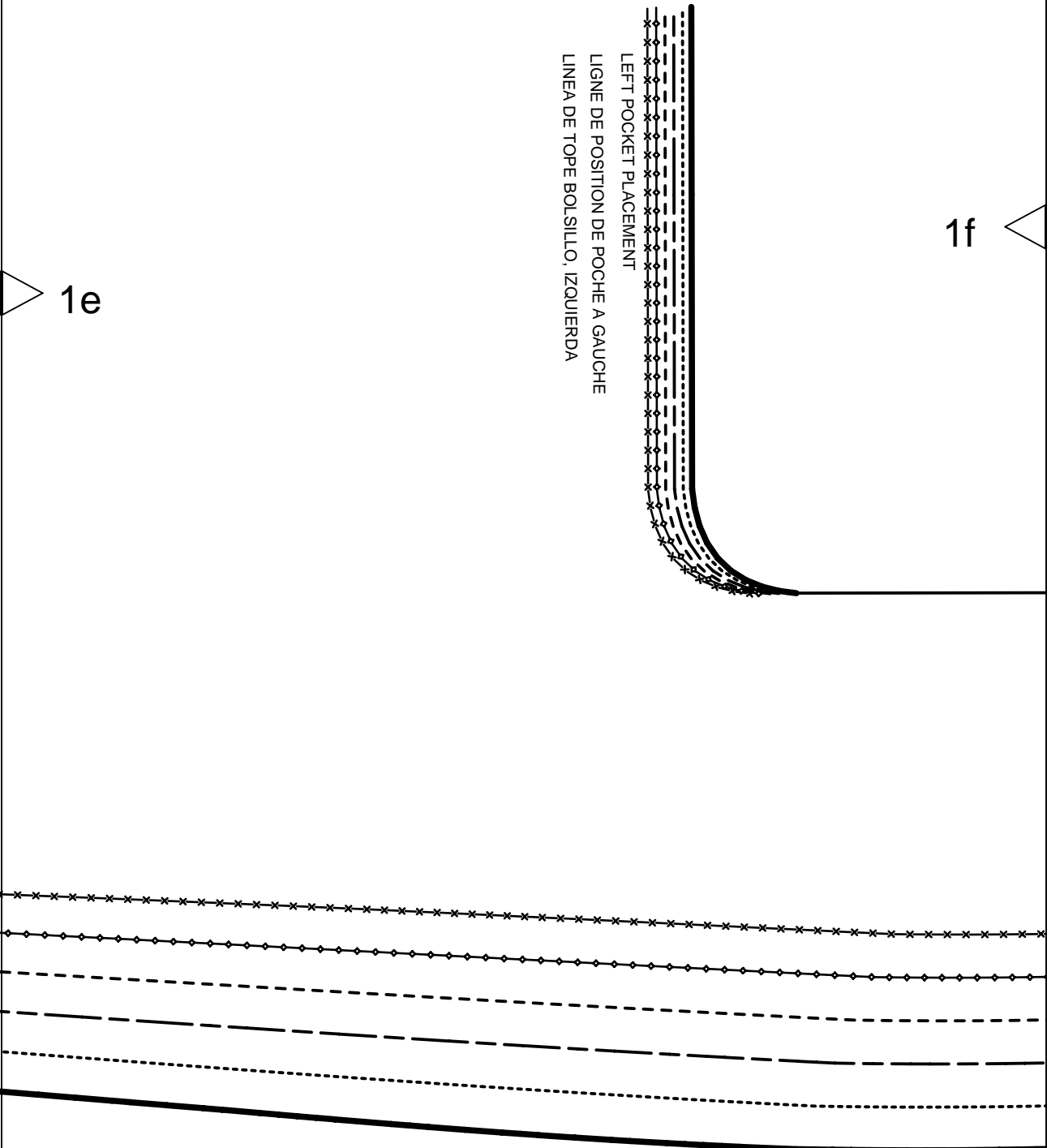
www.burdastyle.com

2f

1f

LEFT POCKET PLACEMENT
LIGNE DE POSITION DE POCHE A GAUCHE
LINEA DE TOPE BOLSILLO, IZQUIERDA

1e



2g

1f

FLAP
RABAT
CARTERA
LEFT
A GAUCHE
IZQUIERDA



34
1

34

36

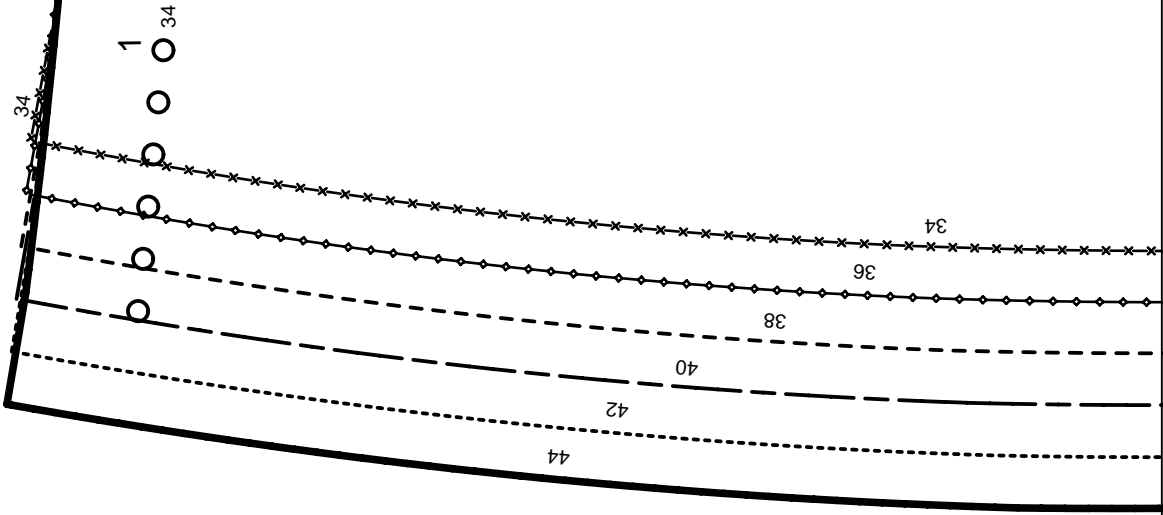
38

40

42

44

4a

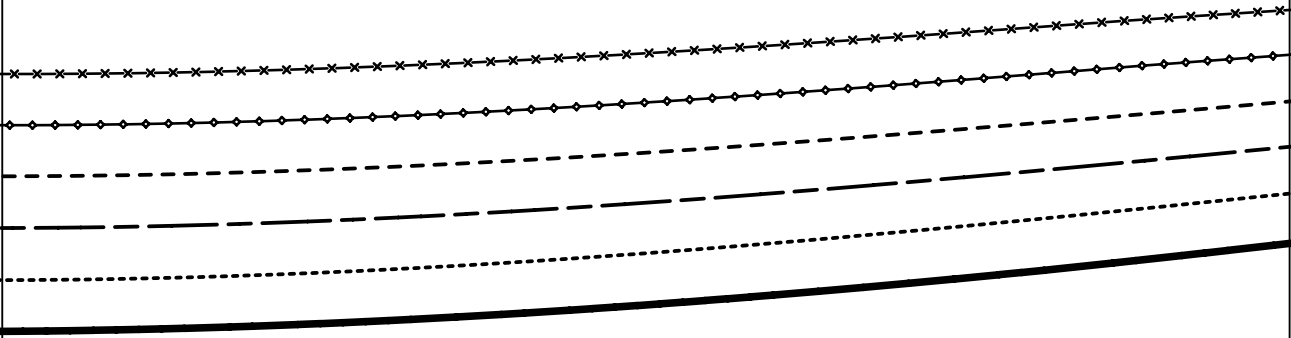


3a

2a

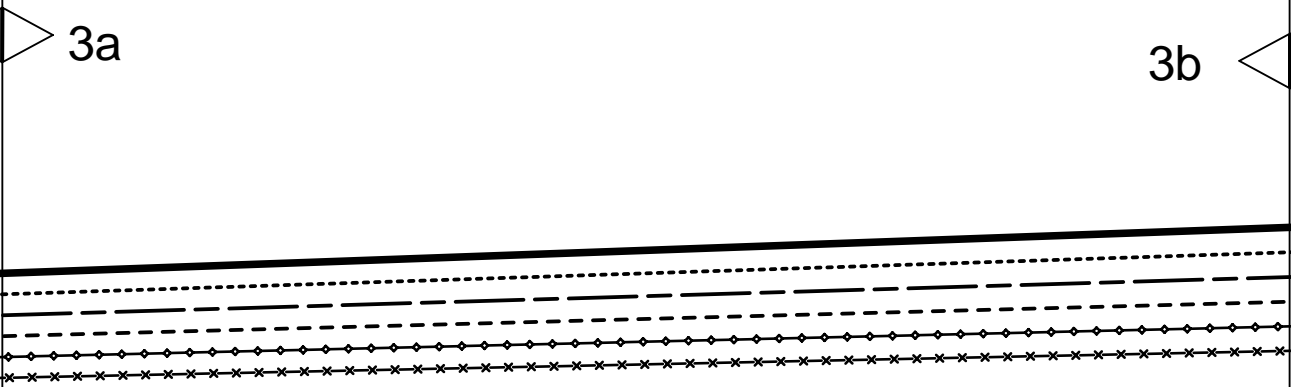


4b



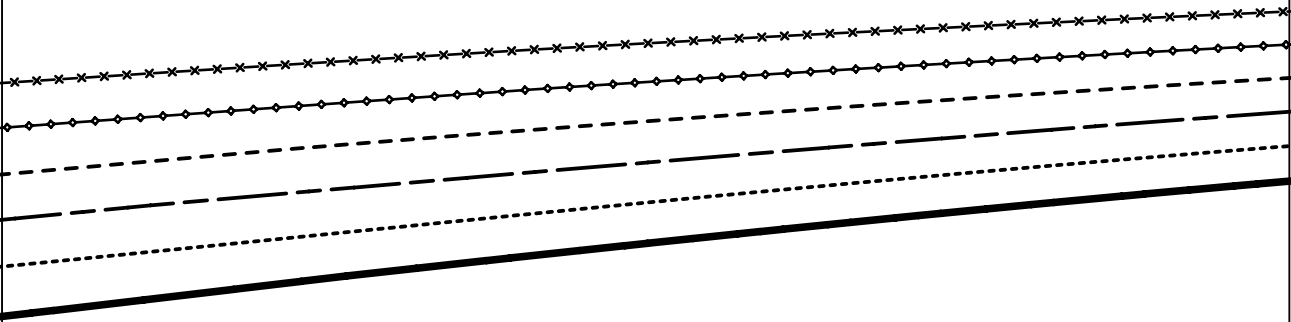
3a

3b



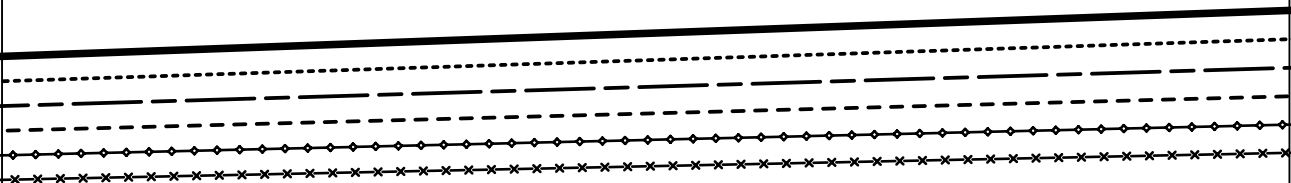
2b

4c



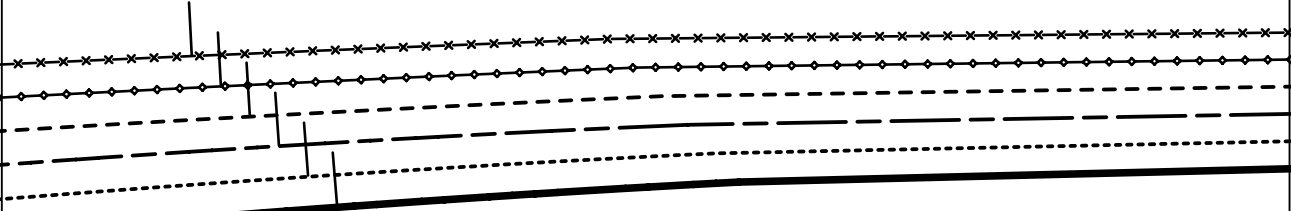
3c

3b



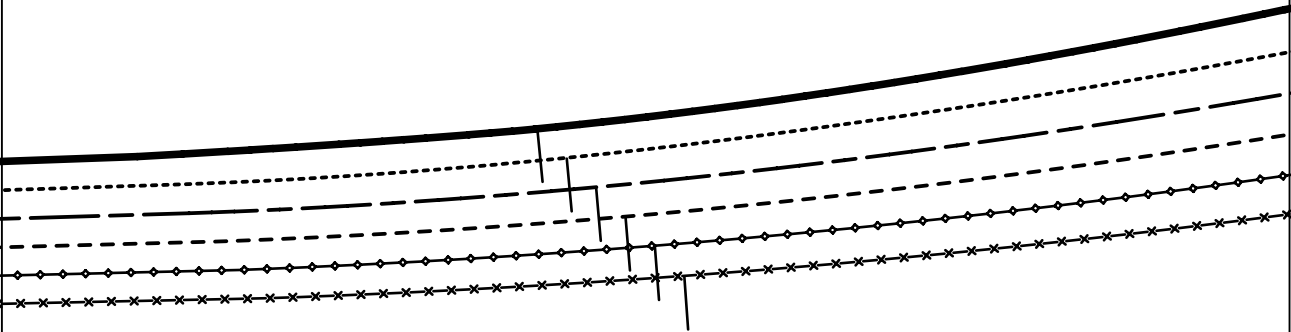
2c

4d



3d

3c



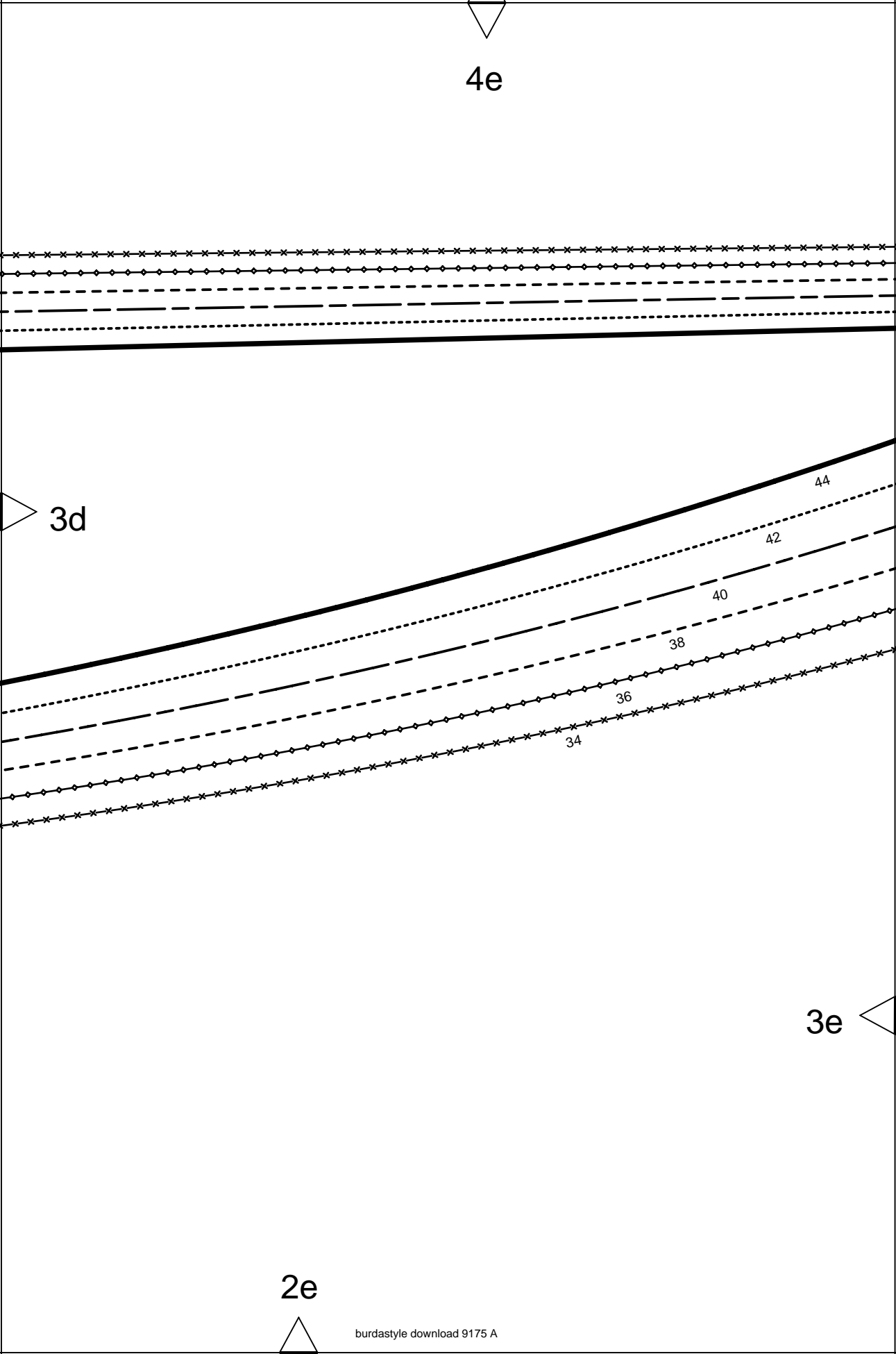
2d

4e

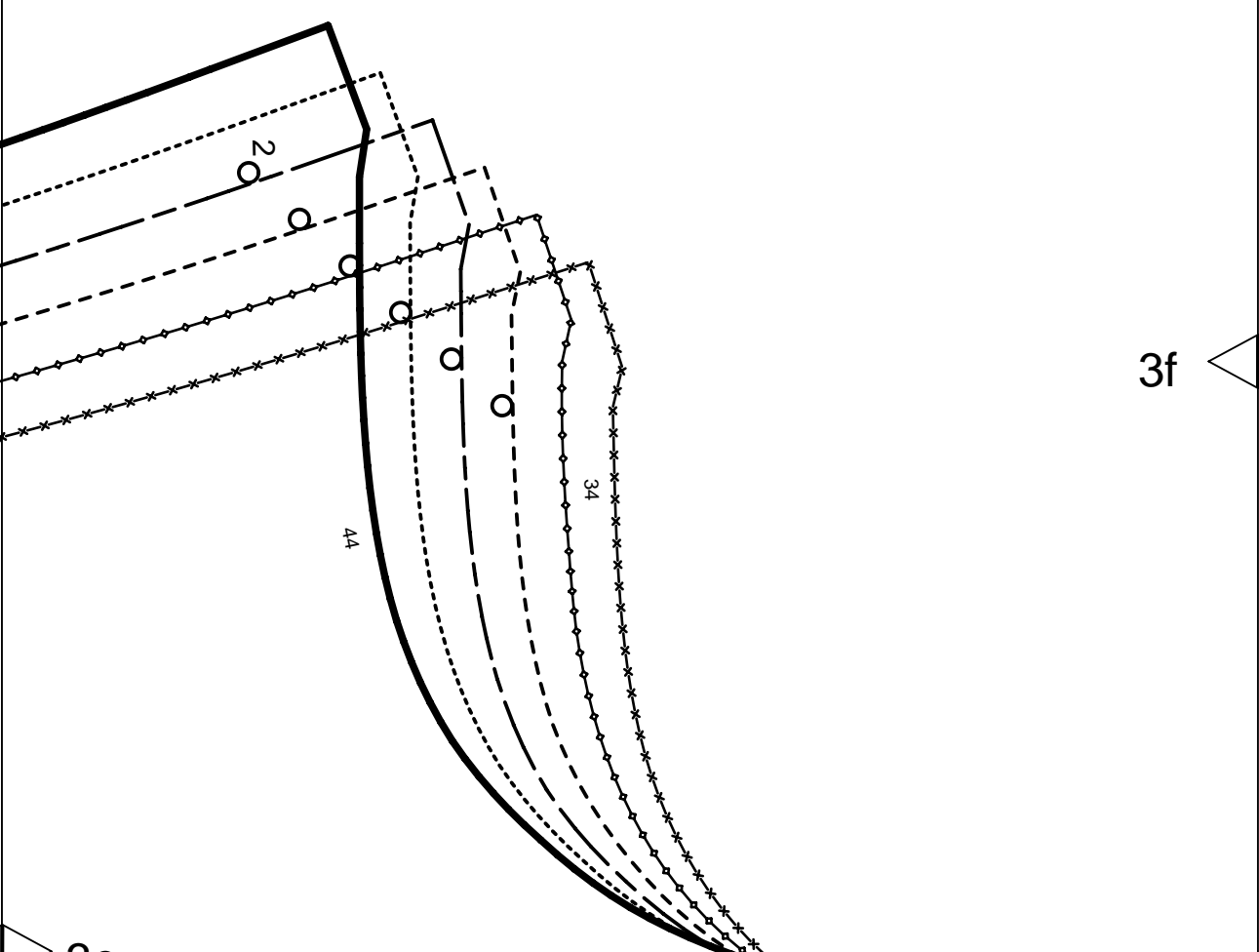
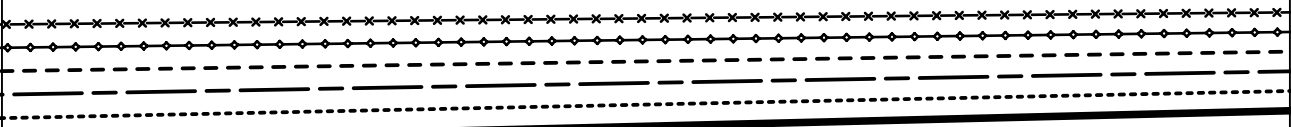
3d

3e

2e



4f



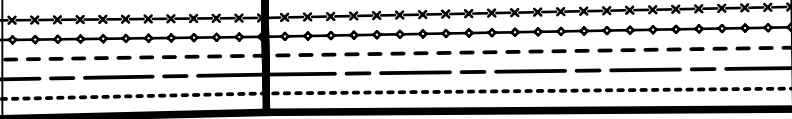
3f

3e

CENTER BACK SEAM
COUTURE MILIEU DOS
CENTRO POST. COSTURA

2f

4g

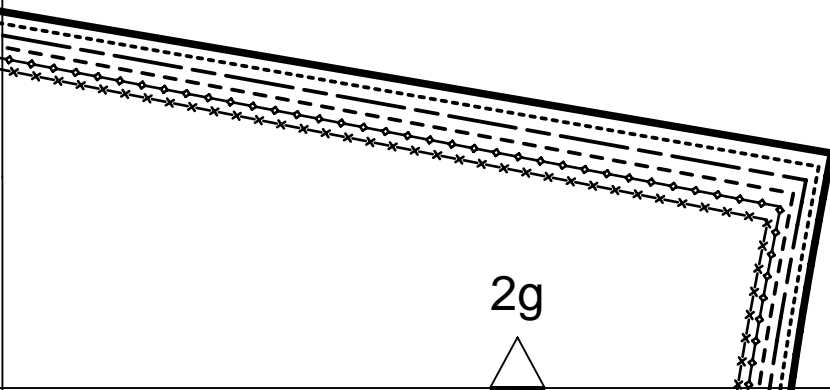


3f

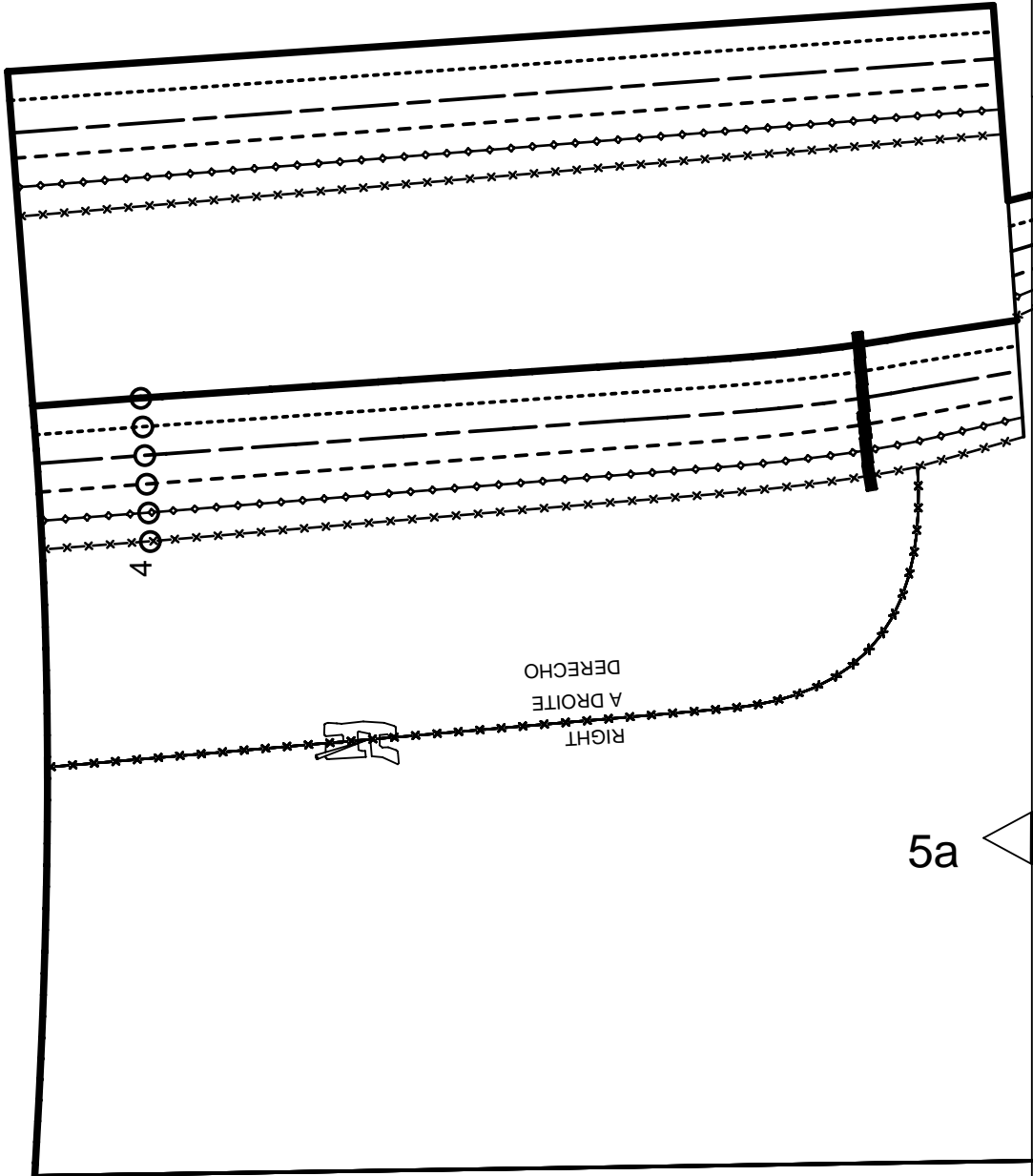
Burda
STYLE

www.burdastyle.com

2g

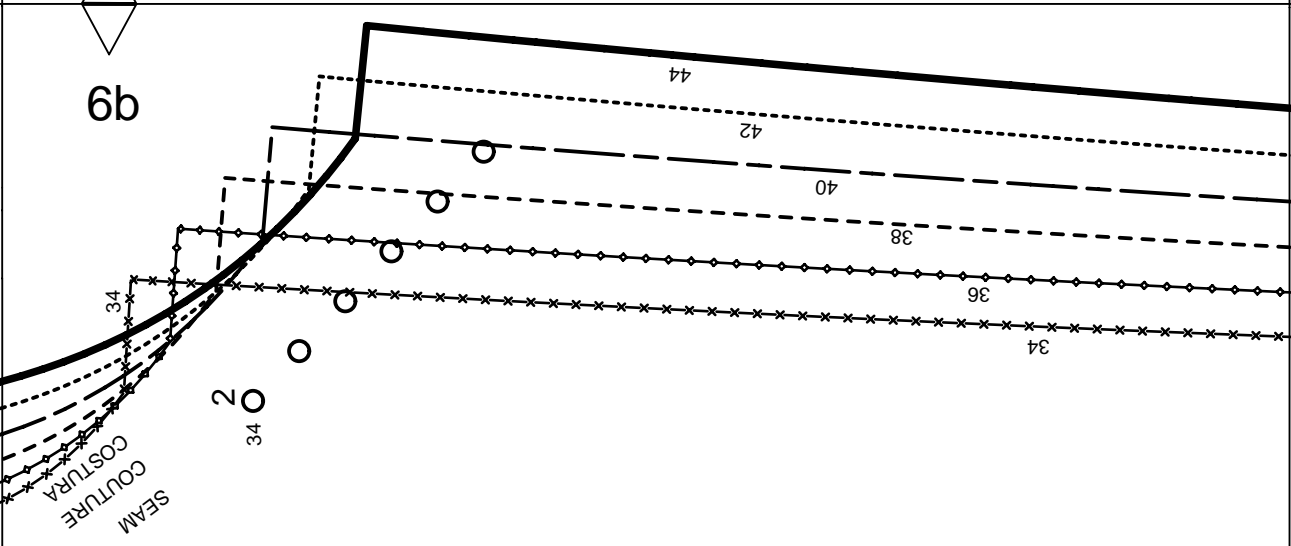


6a



5a

4a



6b

5a

1

PANTS, FRONT
 DEVANT PANTALON/CULOTTE
 PANTALON ANTERIOR



SEAM ALLOWANCE INCLUDED
 AVEC VALEUR DE COUTURE
 CON MARGEN DE COSTURA

5/8"
 (1.5cm)

9175

5b

FINISHED HIP	TOUR DE HANCHES	MEASUREMENTS CADERA
34	35	1/2" 90cm
36	37"	3/4" 94cm
38	39	1" 98cm
40	40	1 1/4" 102cm
42	41	3/4" 106cm
44	43	1 1/2" 110cm

4b

6c

Burda
STYLE
www.burdastyle.com

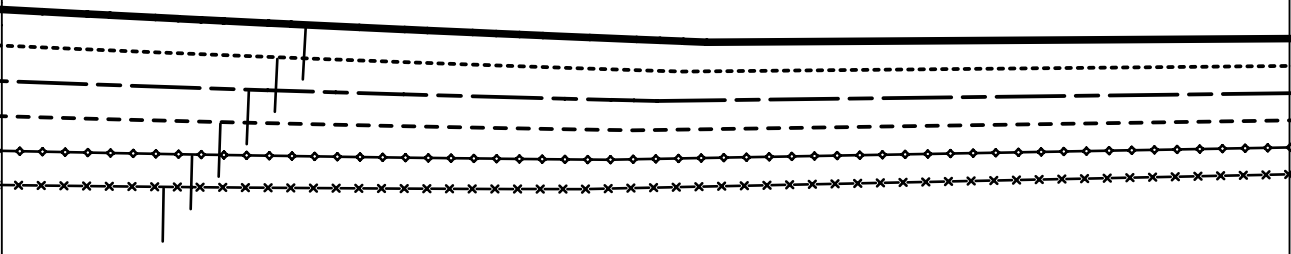
5c

5b

STRAIGHT GRAIN
DROIT FIL
SENTIDO HILO

4c

6d



5d

5c

PRESSED CREASE
 Pli REPASSE
 RAYA DEL PANTALON

4d

6e

5d

5e

STRAIGHT GRAIN
DROIT FIL
SENTIDO HILO

4e

6f

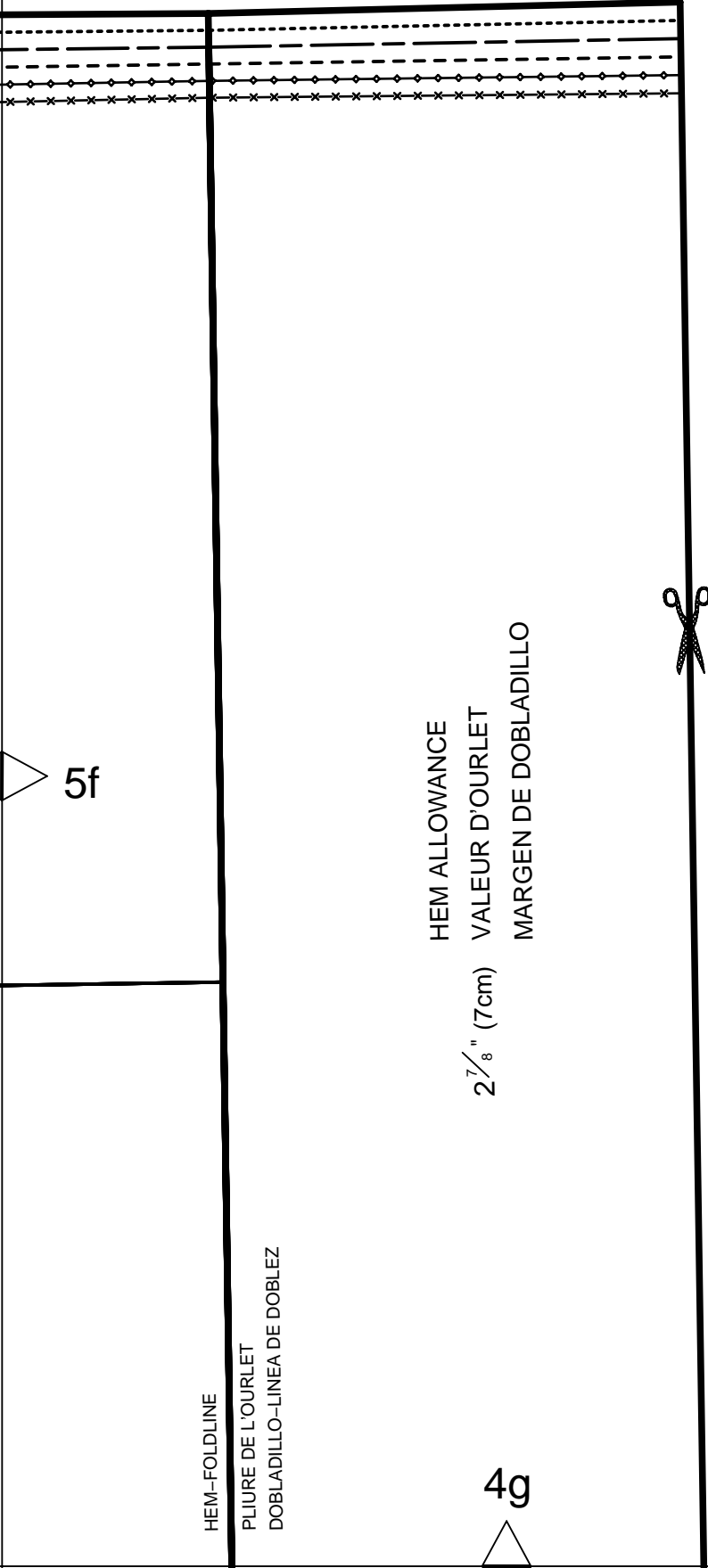
5e

5f

STRAIGHT GRAIN
DROIT FIL
SENTIDO HILO

4f

6g



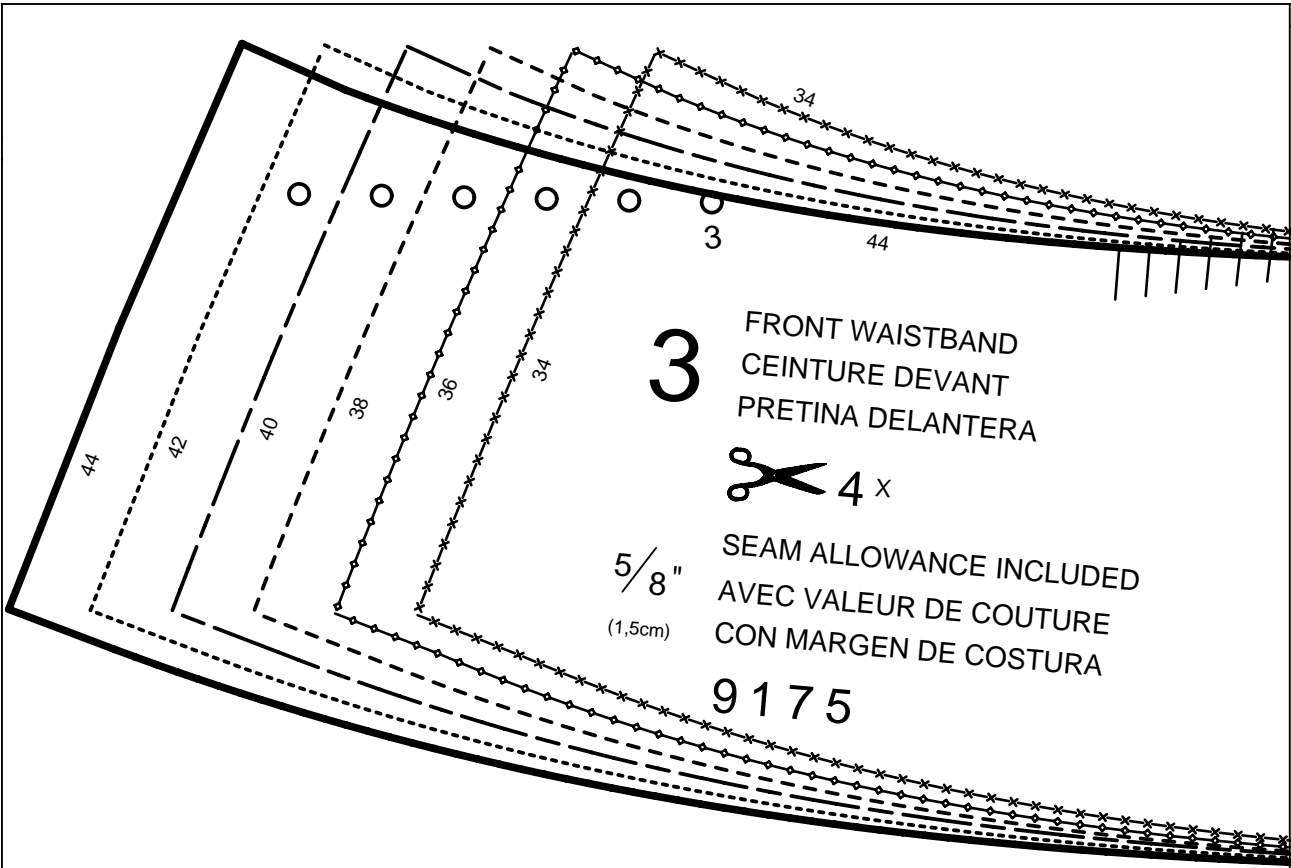
5f

HEM ALLOWANCE
VALEUR D'OURLET
MARGEN DE DOBLADILLO

2 ⁷/₈" (7cm)

HEM-FOLDLINE
PLIURE DE L'OURLET
DOBLADILLO-LINEA DE DOBLEZ

4g



3

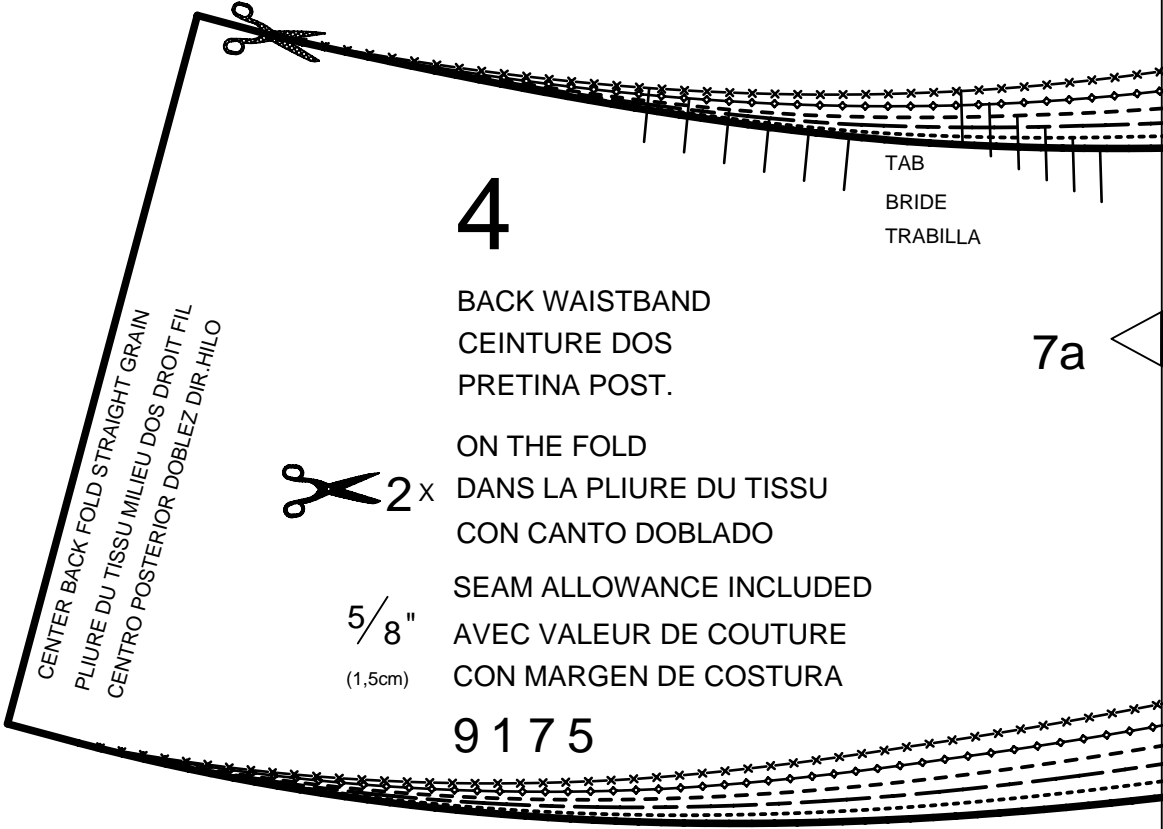
FRONT WAISTBAND
CEINTURE DEVANT
PRETINA DELANTERA



5/8"
(1,5cm)

SEAM ALLOWANCE INCLUDED
AVEC VALEUR DE COUTURE
CON MARGEN DE COSTURA

9175



4

BACK WAISTBAND
CEINTURE DOS
PRETINA POST.

TAB
BRIDE
TRABILLA

7a

CENTER BACK FOLD STRAIGHT GRAIN
PLIURE DU TISSU MILIEU DOS DROIT FIL
CENTRO POSTERIOR DOBLEZ DIR.HILO

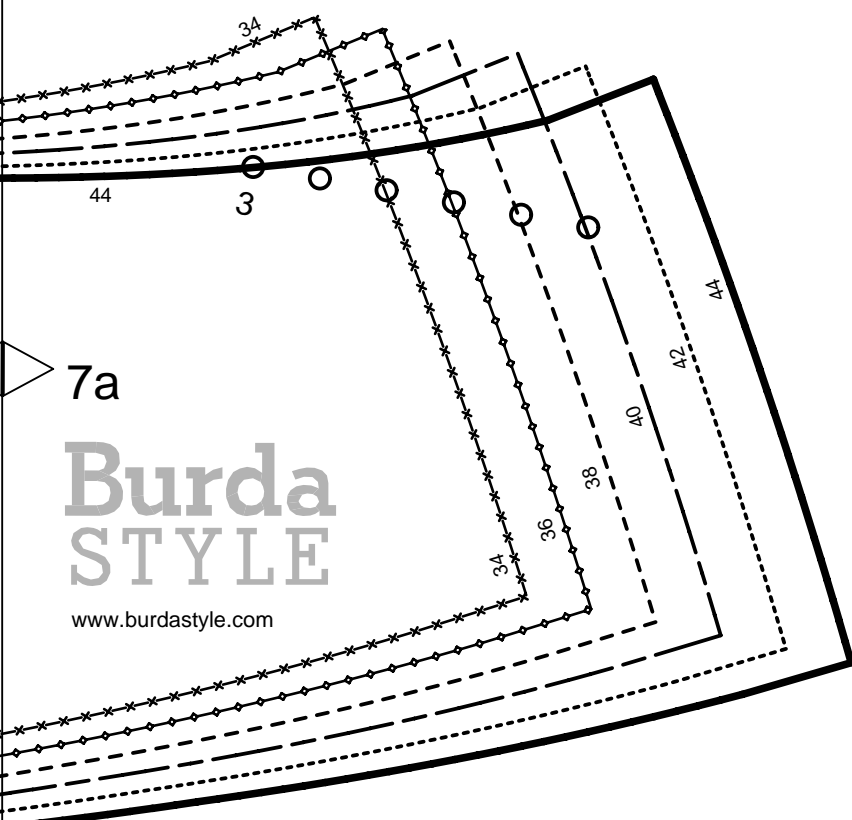
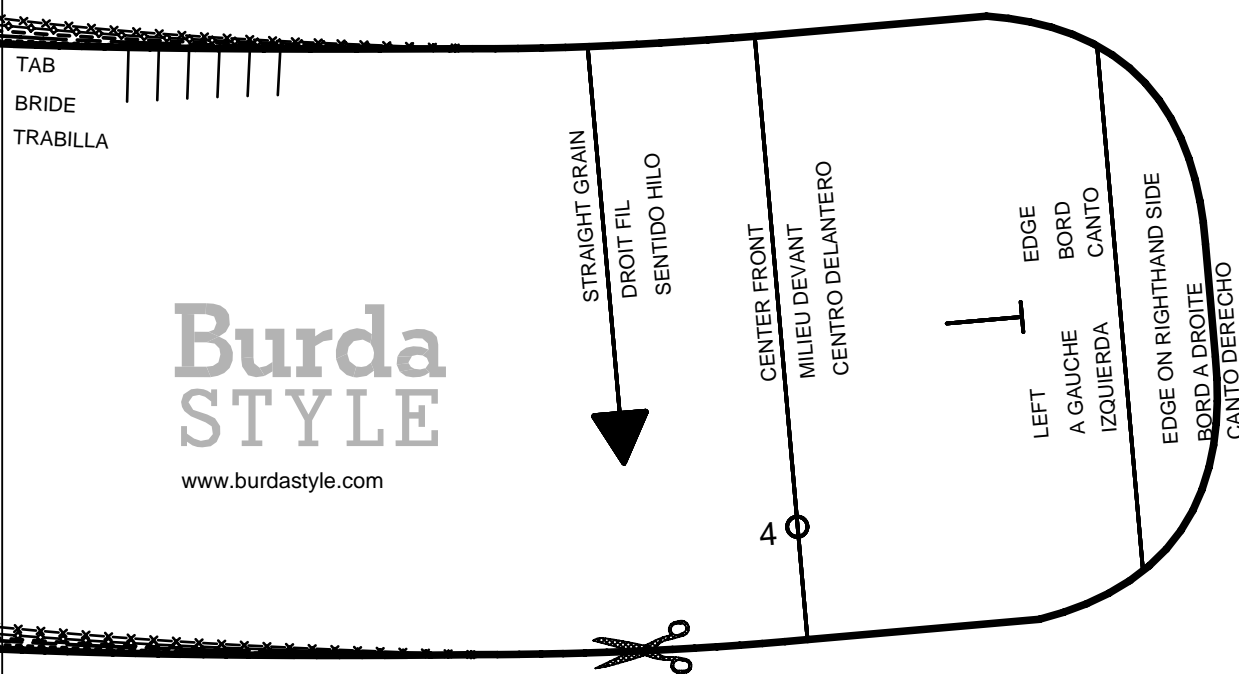


5/8"
(1,5cm)

ON THE FOLD
DANS LA PLIURE DU TISSU
CON CANTO DOBLADO
SEAM ALLOWANCE INCLUDED
AVEC VALEUR DE COUTURE
CON MARGEN DE COSTURA

9175

6a

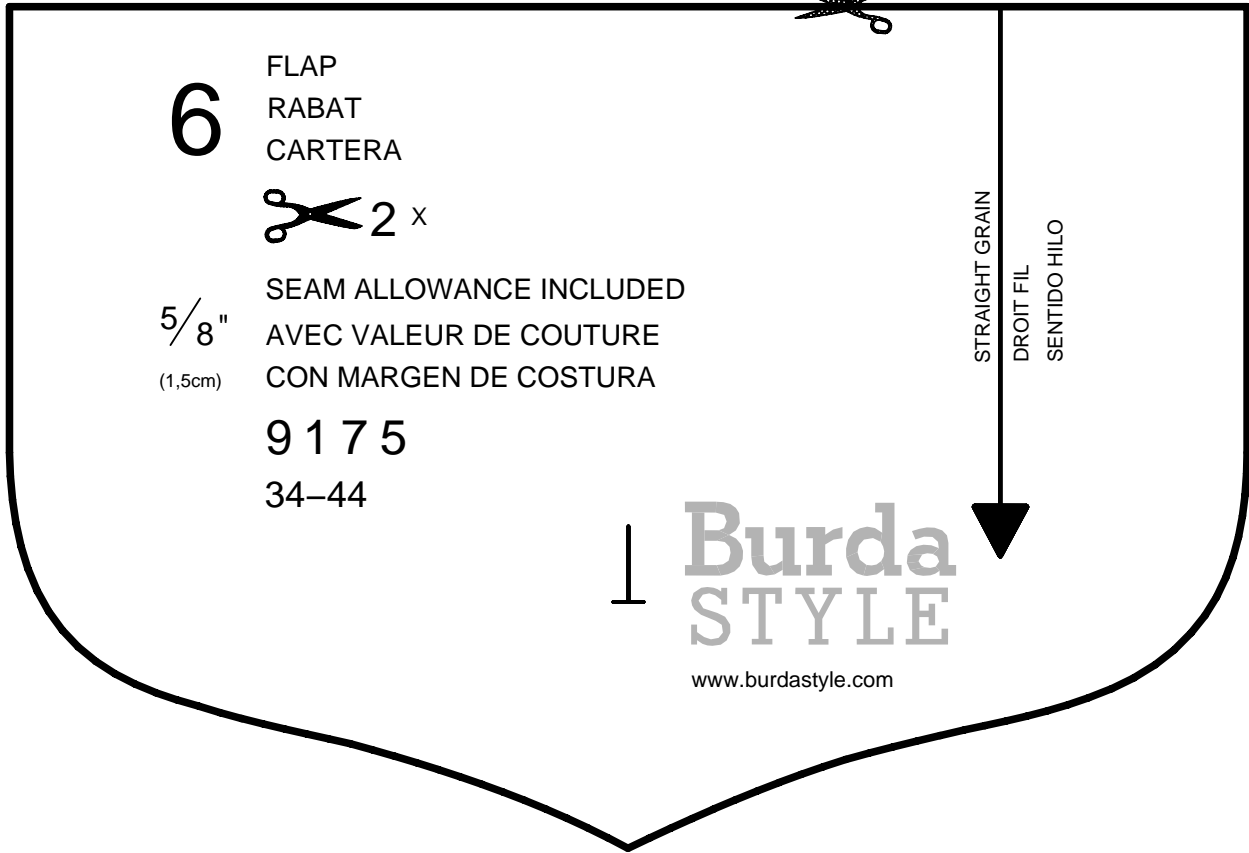


7b

6b

7c

6c



6

FLAP
RABAT
CARTERA



5/8"
(1,5cm)

SEAM ALLOWANCE INCLUDED
AVEC VALEUR DE COUTURE
CON MARGEN DE COSTURA

9 1 7 5
34-44

STRAIGHT GRAIN
DROIT FIL
SENTIDO HILO



www.burdastyle.com

7b

STRAIGHT GRAIN
DROIT FIL
SENTIDO HILO



Burda
STYLE

www.burdastyle.com

PLEAT
PLI
PLIEGUE



PLEAT
PLI
PLIEGUE



5

POCKET
POCHE
BOLSILLO



SEAM ALLOWANCE INCLUDED
AVEC VALEUR DE COUTURE
CON MARGEN DE COSTURA

9 1 7 5

34-44


$\frac{5}{8}$ "
(1,5cm)





7d

6d

7c

 STRAIGHT GRAIN
 DROIT FIL
 SENTIDO HILO


7 TAB
 BRIDE
 TRABILLA

  8 x

SEAM ALLOWANCE INCLUDED
 AVEC VALEUR DE COUTURE
 CON MARGEN DE COSTURA

$\frac{5}{8}$ "
 (1,5cm)

9 1 7 5 34-44



Burda
STYLE

www.burdastyle.com

test square

side length

4 inches (10 cm)

7e 

 7d

6e 

KEY TO SYMBOLS

LEGENDE

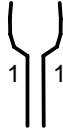
INTERPRETACION DE LOS SIMBOLOS



SYMBOL FOR STITCHING LINES
REMARQUE CONCERNANT LES LIGNES DE PIQUES
INDICACION PARA LINEAS DE PESPUNTE



SEAM ATTACHMENT POINT
POINT DE RACCORD DE LA COUTURE
PUNTO DE AJUSTE DE LA COSTURA



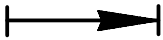
SEAM NUMBERS ARE MATCHING SYMBOLS AND DENOTE
WHERE TWO PIECES SHOULD BE SEWN TOGETHER.
LES CHIFFRES-REPERES INDIQUENT OU ASSEMBLER LES PIECES.
LES CHIFFRES IDENTIQUES COINCIDENT.
LOS NUMEROS DE COSTURA INDICAN DONDE LAS PIEZAS.
LOS MISMOS NUMEROS CONCIDEN.



GATHER BETWEEN THE STARS.
FRONCER ENTRE LES ASTERISQUES.
EMBEBER ENTRE LAS ESTRELLAS.



EASE IN BETWEEN THE DOTS.
SOUTENIR ENTRE LES POINTS.
EMBEBER ENTRE LOS PUNTOS.



POSITION PLEATS IN DIRECTION OF ARROW.
POSER LES PLEIS DANS LE SENS DES FLECHES.
PONER LOS PLIEQUES SEGUN LA FLECHA.



SYMBOL INDICATING THE BEGINNING OR END OF VENT.
REPERE DE DEBUT OU DE FIN DE FENTE.
MARCA PARA EL PRINCIPIO O FINAL DE LA ABERTURA.



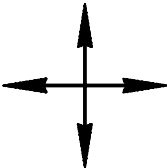
SLASH
FENTE
CORTE



BUTTONHOLE
BOUTONNIERE
OIAL

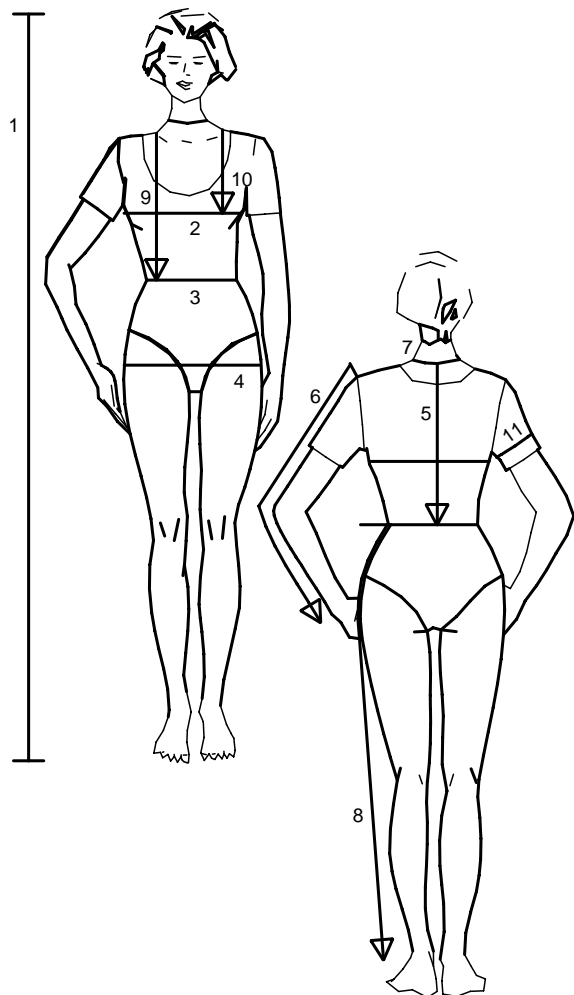


BUTTON OR SNAP
BOUTON OU BOUTON-PRESSION
BOTON O BROCHE DE PRESSION



SEE CUTTING DIAGRAMS FOR STRAIGHT GRAIN OF FABRIC
SENS DU DROIT-FIL VOIR LES PLANS DE COUPE
DIRECCION DEL HILO, VEANSE PLANOS DE CORTE

Size Taille Talla		32	34	36	38	40	42	44	46	48	50	52	54	56	58	60
1	inches	66 1/4	66 1/4	66 1/4	66 1/4	66 1/4	66 1/4	66 1/4	66 1/4	66 1/4	66 1/4	66 1/4	66 1/4	66 1/4	66 1/4	66 1/4
	cm	168	168	168	168	168	168	168	168	168	168	168	168	168	168	168
2	inches	30	31 1/2	33	34 3/4	36 1/4	37 3/4	39 1/2	41	43 1/2	45 1/2	48	50 1/2	52 3/4	55 1/4	57 1/2
	cm	76	80	84	88	92	96	100	104	110	116	122	128	134	140	146
3	inches	23	24 1/2	26	27 3/4	29 1/4	30 3/4	32 1/2	34	36 1/4	38 3/4	41	43 1/2	45 1/2	48	50 1/2
	cm	58	62	66	70	74	78	82	86	92	98	104	110	116	122	128
4	inches	32 1/2	34	35 1/2	37	38 3/4	40 1/4	41 3/4	43 1/2	45 1/2	48	50 1/2	52 3/4	55 1/4	57 1/2	60
	cm	82	86	90	94	98	102	106	110	116	122	128	134	140	146	152
5	inches	15 3/4	16	16 1/4	16 1/2	16 1/2	16 3/4	17	17 1/4	17 1/4	17 1/2	17 3/4	18	18 1/4	18 1/2	18 1/2
	cm	40	40,5	41	41,5	42	42,5	43	43,5	44	44,5	45	45,5	46	46,5	47
6	inches	23 1/4	23 1/4	23 1/4	23 3/4	23 3/4	24	24	24	24	24 1/2	24 1/2	24 1/2	24 3/4	24 3/4	24 3/4
	cm	59	59	59	60	60	61	61	61	61	62	62	62	63	63	63
7	inches	13	13 1/2	14 1/4	14 1/2	14 3/4	15	15 1/2	15 3/4	16 1/4	16 1/2	17	17 1/4	17 3/4	18 1/4	18 1/2
	cm	33	34	35	36	37	38	39	40	41	42	43	44	45	46	47
8	inches	39 3/4	40 1/4	40 1/4	40 3/4	41	41	41 1/2	41 1/2	41 1/2	41 3/4	41 3/4	41 3/4	42 1/4	42 1/2	42 1/2
	cm	101	102	102	103	104	104	105	105	105	106	106	106	107	108	108
9	inches	16 1/2	17	17 1/4	17 3/4	18 1/4	18 1/2	19	19 1/4	19 3/4	20 1/4	20 1/2	21	21 1/4	21 3/4	22 1/4
	cm	42	43	44	45	46	47	48	49	50	51	52	53	54	55	56
10	inches	9 1/2	9 7/8	10 1/4	10 3/4	11 1/8	11 1/2	11 7/8	12 1/4	12 3/4	13	13 1/2	14 1/4	14 1/2	14 3/4	15
	cm	24	25	26	27	28	29	30	31	32	33	34	35	36	37	38
11	inches	9 7/8	10 1/4	10 3/4	11 1/8	11 1/2	11 7/8	12 1/4	12 3/4	13 1/2	14 1/2	15	15 3/4	16 1/2	17 1/4	18 1/4
	cm	25	26	27	28	29	30	31	32	34	36	38	40	42	44	46



englisch

1. Height
2. Bust
3. Waist
4. Hip
5. Back length
6. Sleeve length
7. Neck width
8. Side leg length
9. Front waist length
10. Bust point
11. Upper arm circumf.

For dresses, blouses, coats and jackets select size according to bust measurement, for trousers and skirts according to hip measurement!
All burda patterns are prepared with ease allowance appropriate for style in question.

français

1. Stature
2. Tour de poitrine
3. Tour de taille
4. Tour des hanches
5. Long. du dos
6. Longueur de manche
7. Tour de cou
8. Long. côté pantalon
9. Long. taille devant
10. Profondeur de poitrine
11. Tour du bras

Robes, corsages, manteaux et vestes seront choisis d'après votre tour de poitrine les pantalons et les jupes d'après votre tour de hanches!
Tous les patrons sont établis avec l'aisance nécessaire selon le genre du modèle.

español

1. Estatura
2. Contorno busto
3. Contorno cintura
4. Contorno cadera
5. Largo espalda
6. Largo manga
7. Contorno cuello
8. Largo lateral del pantalón
9. Largo talle delantero
10. Altura de pecho
11. Cont. de brazo

La talla para los vestidos, blusas, abrigos y chaquetas, se determina de acuerdo con el contorno del busto. Los pantalones y las faldas, de acuerdo con el contorno de las caderas.

En el patrón-Burda se incluyen los márgenes para la holgura necesaria.