

burda Download-Pattern Dress 7969 – Instructions

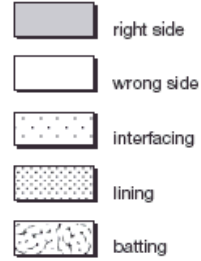
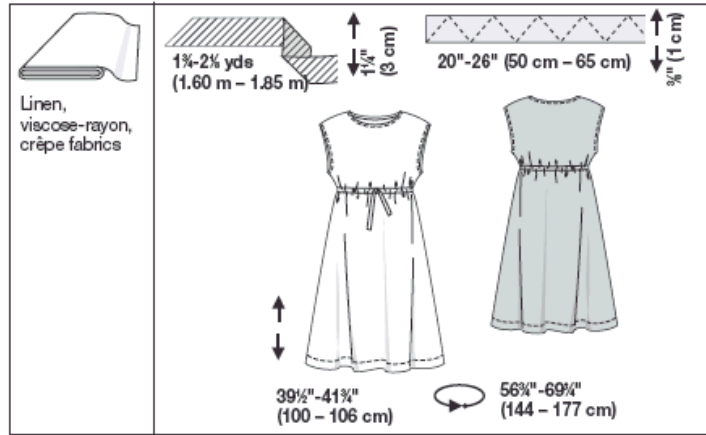
● □ □ □
very easy

semi fitted

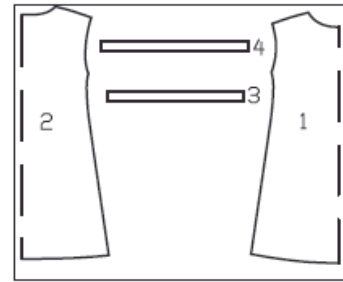
burda sizes	45 ins / 114 cm								55 ins / 140 cm							
	38	40	42	44	46	48	50	38	40	42	44	46	48	50		
yds	2 1/8	2 1/8	2 1/8	2 1/8	2 1/8	2 1/8	2 1/8	2 1/8	2 1/8	2 1/8	2 1/8	2 1/8	2 1/8	2 1/8		
m	2.25	2.25	2.25	2.35	2.35	2.35	2.35	2.25	2.25	2.25	2.35	2.35	2.35	2.35		
	*	*	*	*	*	*	*	*	*	*	*	*	*	*		

★ without nap

IMPORTANT ! extra fabric required to cross figured fabrics



Patternpieces:



PATTERN PIECES:

- | | |
|----------------|----|
| 1 Front | 1x |
| 2 Back | 1x |
| 3 Casing Strip | 2x |
| 4 Tie Band | 2x |
| 5 Casing Strip | 2x |

CUTTING LAYOUTS ARE ON THE PATTERN SHEET

PREPARING PATTERN PIECES

Choose your size according to the Burda measurement chart on the pattern sheet: dresses, blouses, jackets and coats according to your bust measurement, pants and skirts according to your hip measurement. Adjust the pattern pieces, if necessary, by adding or subtracting the number of inches that your measurements differ from the measurements given in the Burda chart.

Cut out all pieces in the required size from the pattern sheet:

LENGTHENING OR SHORTENING PATTERN PIECES

Our pattern is calculated for a height of 5 feet, 6 inches (168 cm). If you are taller or shorter, you may adjust the pattern to

fit your size at the lines marked "lengthen or shorten here".
→ Make sure that you adjust all pieces of one model by the same amount at the same lines.

How to lengthen and shorten pattern pieces:

Cut the pattern pieces along the marked lines.

To **lengthen**, slide the two halves of the pattern piece as far apart as necessary.

To **shorten**, overlap the two halves of the pattern piece as far as necessary.

Even out the side edges.

CUTTING OUT

FOLD (---) means: this is the center of a pattern piece but in no case a cut edge or a seam. The piece should be cut double, with the fold line forming the center line.

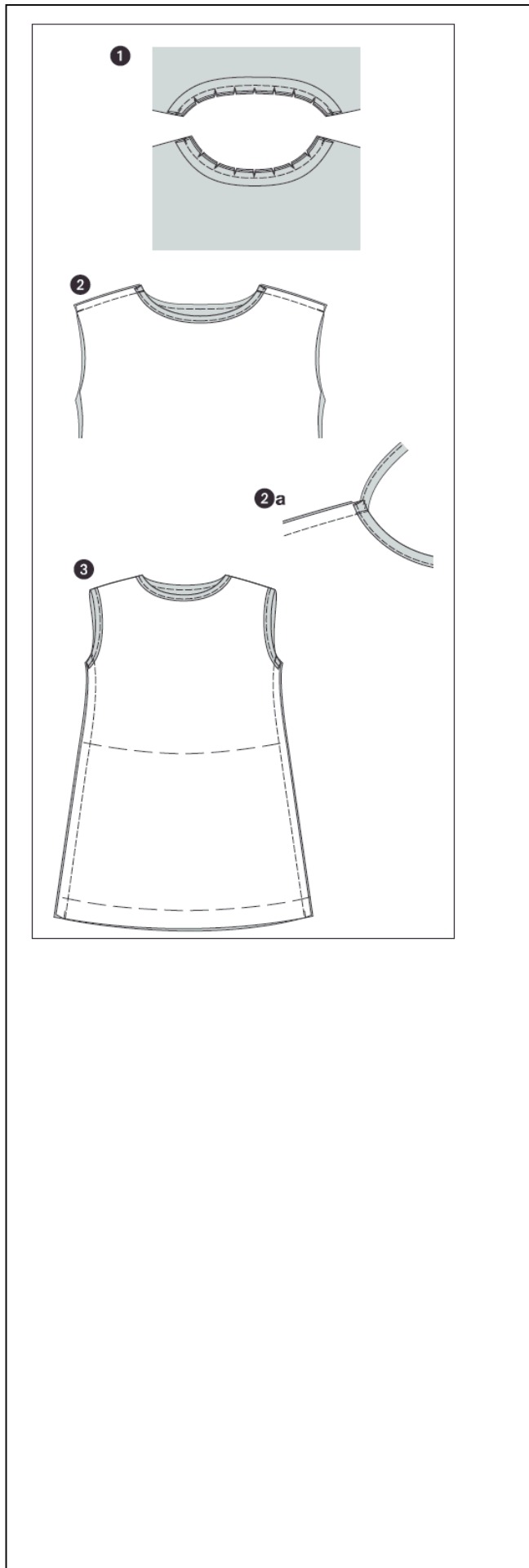
Pattern pieces that are outlined with a broken line in the cutting diagrams are to be placed face down on the fabric.

The cutting diagram on the pattern sheet show how the pattern pieces should be placed on the fabric.

SEAM AND HEM ALLOWANCES are included on the pattern pieces: 1 5/8" (4 cm) for hem, 5/8" (1.5 cm) at all other seams and edges.

Cutting from a double layer of fabric:

Fold the fabric in half lengthwise, right side facing in and matching the selvages. Pin the pattern pieces to the wrong side.



SEWING

When sewing, right sides of fabric should be facing.

DRESS

Neckline / Bias Tape

Fold bias tape in half lengthwise, press.

→ Trim the allowance at front and back edge of neckline to 1/4" (0.7 cm).

1.) Baste bias tape right sides together with front and back edge of neckline so that the open edges lie on the seam allowance. Stitch bias tape 1/4" (0.7 cm) wide. Trim allowances, clip curves. Turn bias tape to inside, baste and press. Topstitch 3/16" (0.5 cm) next to edge of neckline, catching bias tape.

Shoulder Seams

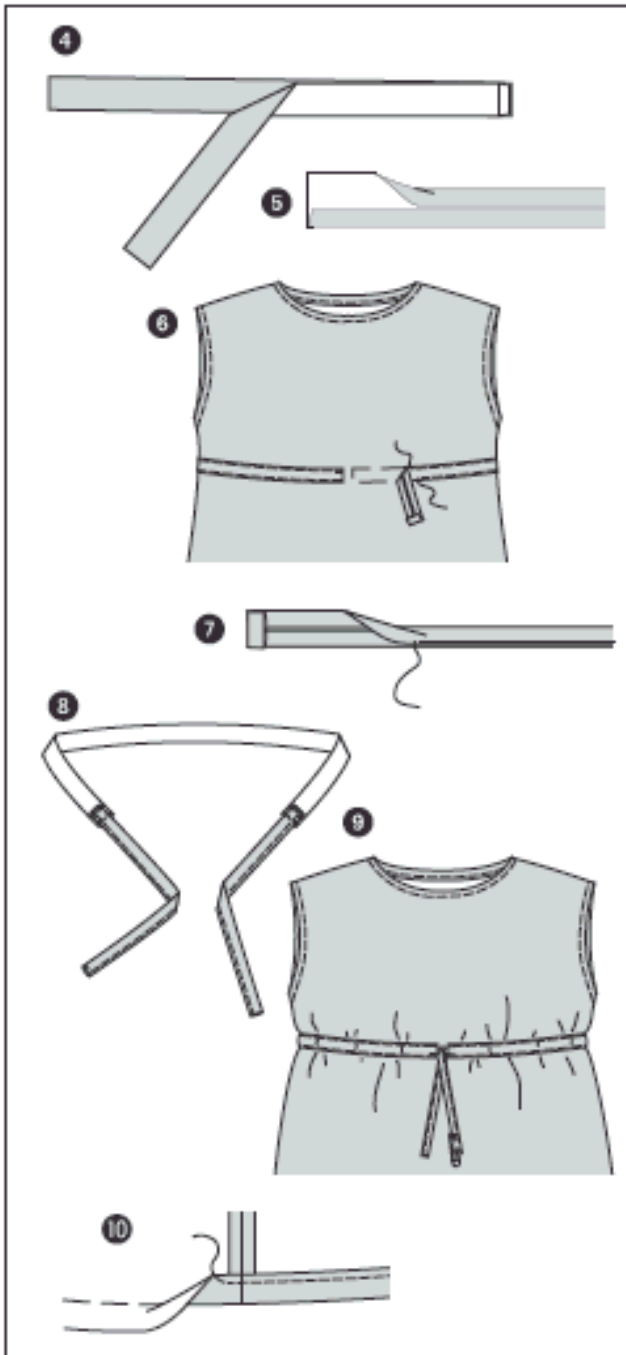
2.) Lay front right sides together with back. Baste shoulder seams (seam number 1) and stitch. Trim seam allowances, neaten together and press onto back. Sew seam allowances to bias tape (2a).

Armholes / Bias Tape

Neaten edges of armholes as instructed for neckline (see steps 1 and 2).

Side Seams / B Slits

3.) Lay front right sides together with back. Baste side seams (seam number 2). Stitch side seams from upper to lower edges. Secure ends of stitching. Neaten seam allowances and press open.



Drawstring Casing

4.) Lay casing strips (A piece 3) right sides together and stitch center back seam. Press seam allowances open.

5.) Press lengthwise edge of casing to center.

6.) Baste casing strip on right fabric side of front and back pieces over marked lines. Turn in ends of casing strip in front. Stitch casing close to edges. Secure ends of stitching.

TIP: It will be easier to pin on the casing strip if you slip the dress/tunic over your ironing board.

Tie Bands

7.) Press allowance at long edges to center. Press one end of each tie band to wrong side. Press strips in half, wrong side facing in. Stitch together close to edges.

8.) Stitch open ends of tie bands onto ends of elastic.

9.) Use a safety pin as a bodkin to insert tie bands with elastic through casing.

Hem

10.) Neaten hem, turn in, baste and press. Topstitch lower edge 1 1/2" (3.5 cm) wide, catching hem.

11.) Turn slit allowances to inside again, baste in place. Topstitch slit edges 1/2" (1.2 cm) wide, catching allowances.