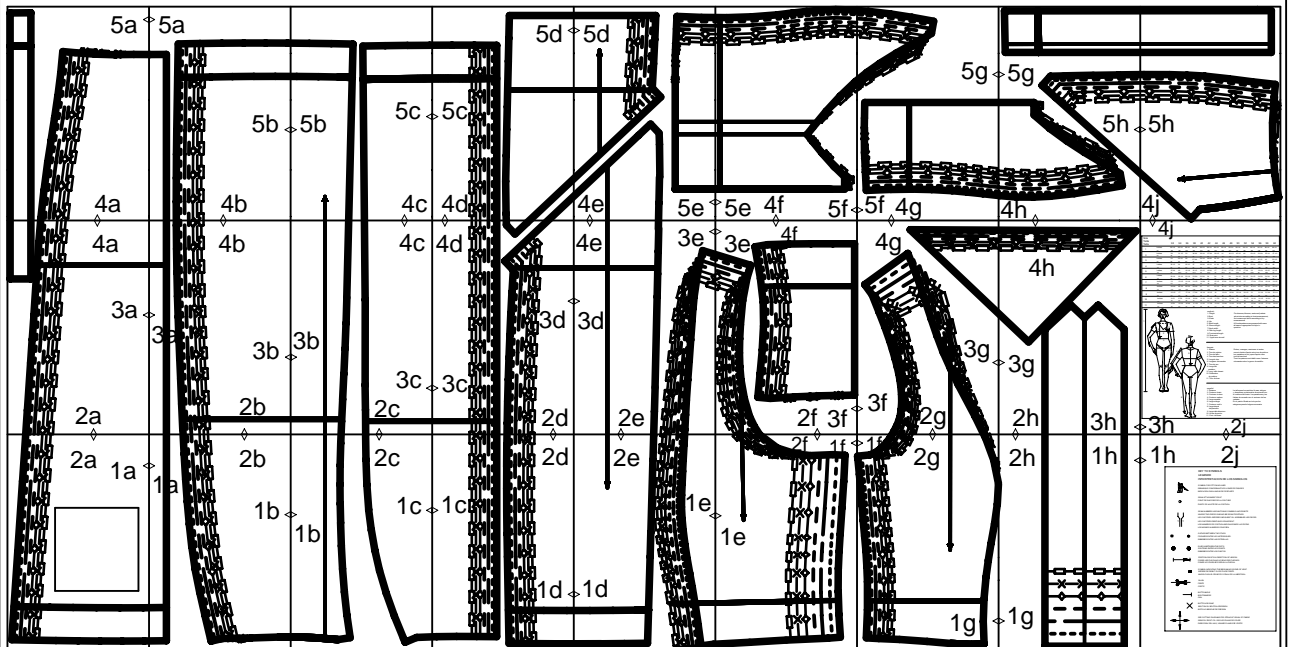


burdastyle download 6000

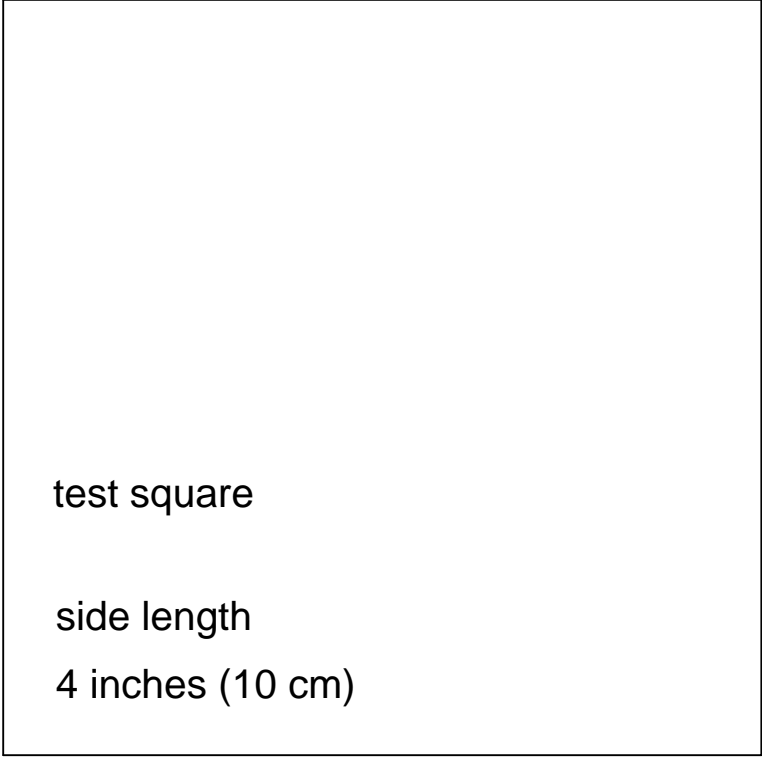
layout drawing



2a

1a

SLIT ON RIGHT SIDE  
FENTE A DROITE  
ABERTURA DECHERA



HEM-FOLDLINE  
PLIURE DE L'OURLET  
DOBLADILLO-LINEA DE DOBLEZ

HEM ALLOWANCE  
VALEUR D'OURLET  
MARGEN DE DOBLADILLO

1 5/8" (4cm)

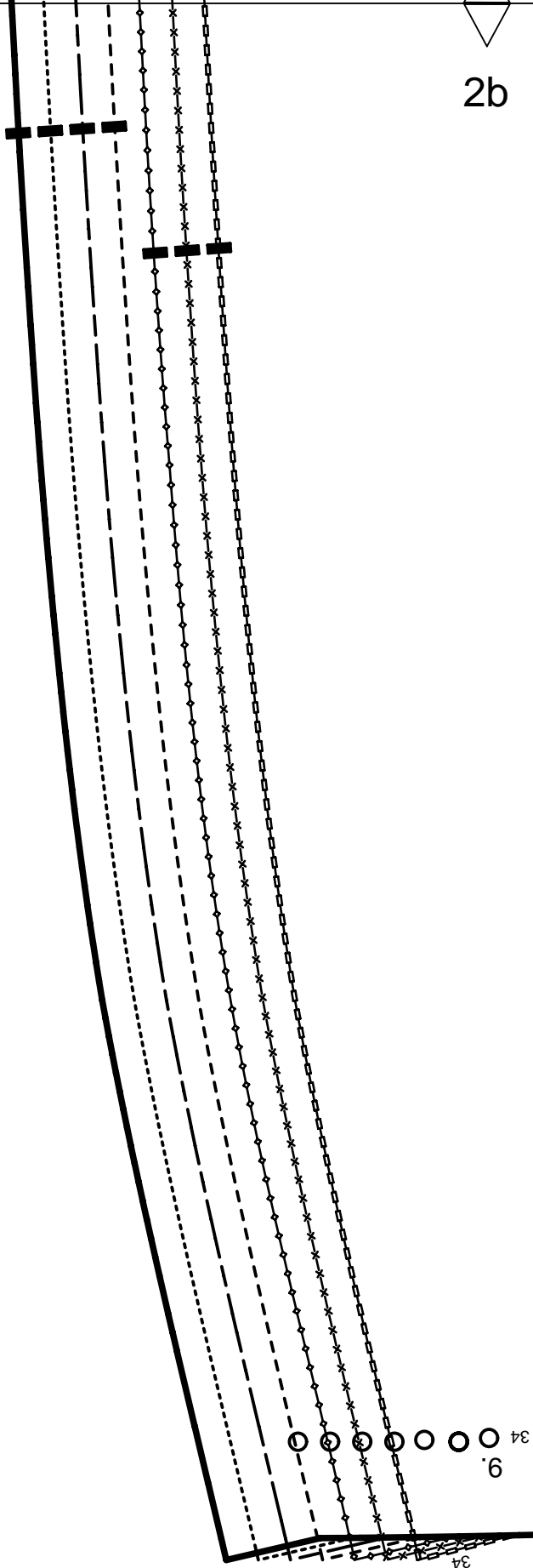


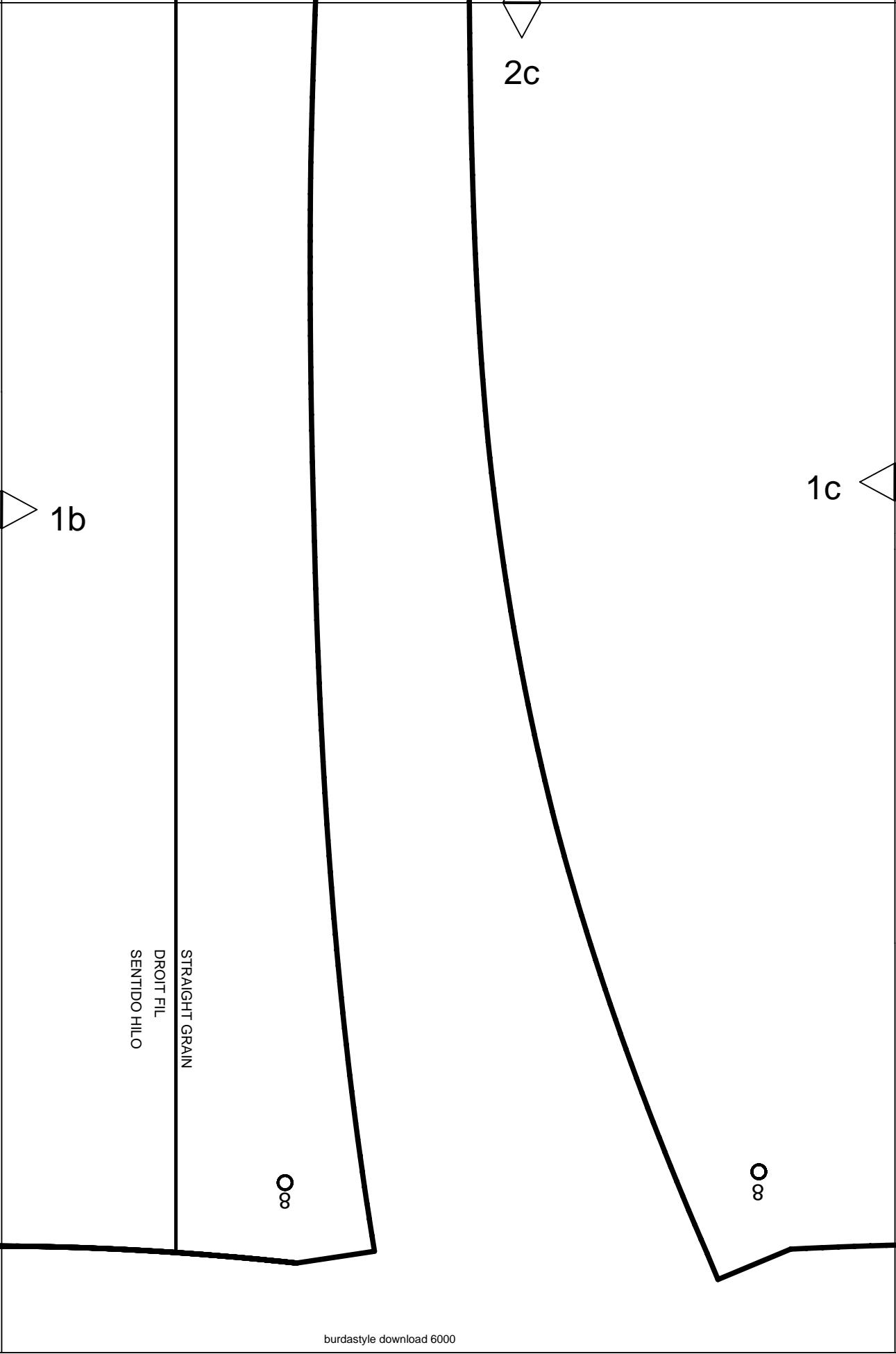
CENTER FRONT FOLD, STRAIGHT GRAIN  
MILIEU DEVANT PLIURE, DROIT FIL  
MEDIO DELANTERO DOBLEZ SENT.HILO

1a

2b

1b





1b

2c

1c

STRAIGHT GRAIN  
DROIT FIL  
SENTIDO HILO

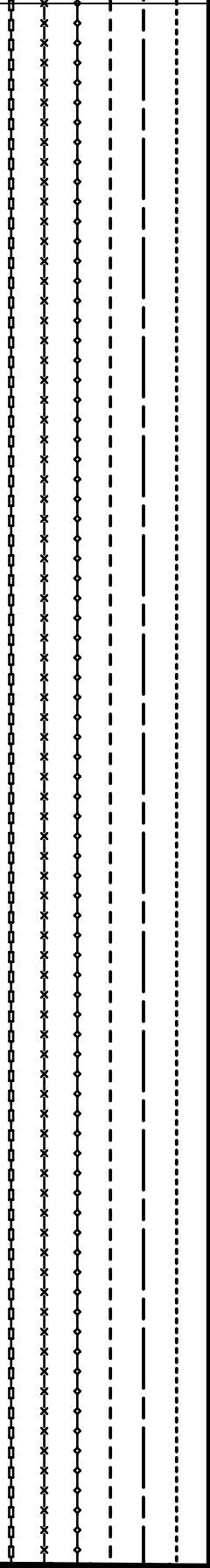
∞

∞

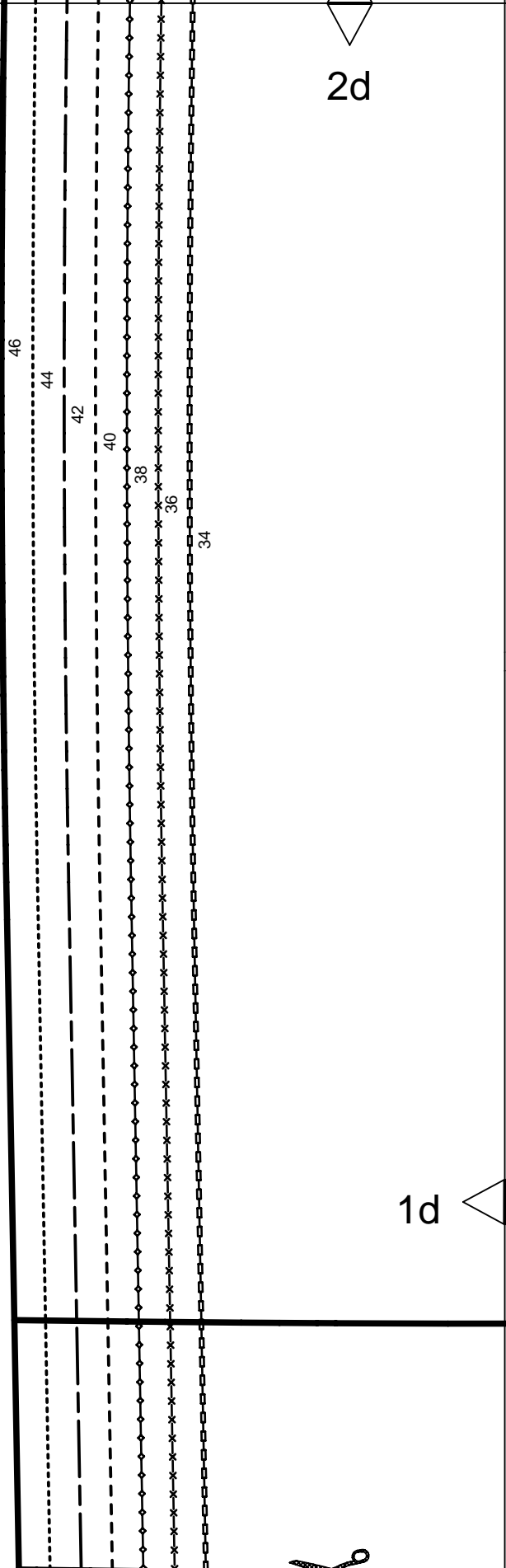


1c

CENTER BACK FOLD STRAIGHT GRAIN  
PLIURE DU TISSU MILIEU DOS DROIT FIL  
CENTRO POSTERIOR DOBLEZ DIR.HILO



2d



1d



2e

SLIT ON RIGHT SIDE  
FENTE A DROITE  
ABERTURA DECHERA

5

SIDE FRONT SKIRT PANEL  
COTE DEVANT DE JUPE  
FALDA LATERAL ANTERIOR

BOTTOM  
EN BAS  
ONDER



SEAM ALLOWANCE INCLUDED  
AVEC VALEUR DE COUTURE  
CON MARGEN DE COSTURA

5/8" (1,5cm)

6000

Burda  
STYLE

www.burdastyle.com

1d

HEM-FOLDLINE

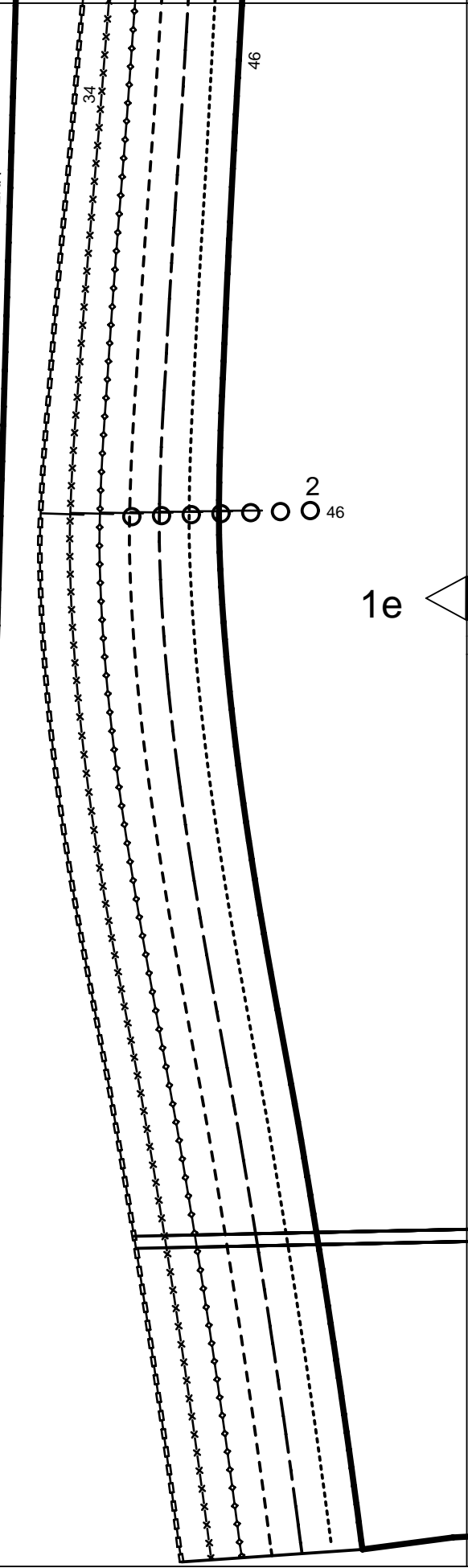
PLIURE DE L'OURLET  
DOBLADILLO-LINEA DE DOBLEZ

HEM ALLOWANCE

1 5/8" (4cm)

VALEUR D'OURLET

MARGEN DE DOBLADILLO



2f

1f

STRAIGHT GRAIN  
DROIT FIL  
SENTIDO HILO

1e

9

SIDE BACK  
COTE DOS  
ESPALDA LATERAL

FABRIC + LINING  
TISSU + DOUBLURE  
TELA + FORRO

SEAM ALLOWANCE INCLUDED  
AVEC VALEUR DE COUTURE  
CON MARGEN DE COSTURA

5/8" (1,5cm)

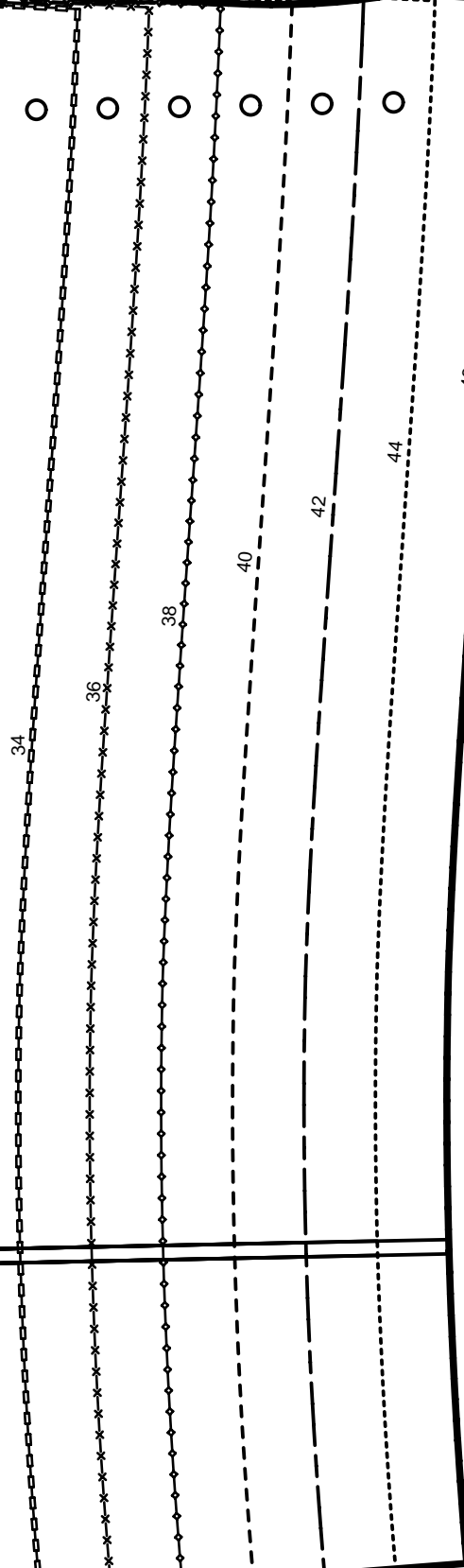
6000

LENGTHEN OR SHORTEN HERE  
RALLONGER OU RACCOURCIR ICI  
ALARGAR O ACORTAR AQUI

Burda  
STYLE

www.burdastyle.com

34 3



1f

2g

3  
34

FINISHED BUST	TOUR DE POITRINE	CONTORNO BUSTO
SIZE	34 31	1/2" 80cm
	36 33"	84cm
	38 34	3/4" 88cm
	40 46	1/4" 92cm
	42 37	3/4" 96cm
	44 39	1/2" 100cm
	46 41"	104cm

# Burda STYLE

www.burdastyle.com

## 2

SIDE FRONT  
COTE DEVANT  
DELANTERO LATERAL

LEFT ZIPPER  
FERM. A GLISS A GAUCHE  
CREMALLERA IZQUIERDA

 2 x

FABRIC + LINING  
TISSU + DOUBLURE  
TELA + FORRO

5/8"  
(1,5cm)

SEAM ALLOWANCE INCLUDED  
AVEC VALEUR DE COUTURE  
CON MARGEN DE COSTURA

### 6000

LENGTHEN OR SHORTEN HERE  
RALLONGER OU RACCOURCIR ICI  
ALARGAR O ACORTAR AQUI

46  
44  
42  
40  
38  
36  
34

1g





1h

2h



BELT  
CEINTURE  
CINTURON

14

ON THE FOLD  
DANS LA PLIURE DU TISSU  
CON CANTO DOBLADO



SEAM ALLOWANCE INCLUDED  
AVEC VALEUR DE COUTURE  
CON MARGEN DE COSTURA

5/8"  
(1,5cm)

6000

FABRIC FOLD  
PLIURE DU TISSU  
CANTO DE DOBLEZ

CENTER BACK  
MILIEU DOS  
CENTRO POST.

34

36

38

40

42

44

46

1g

## KEY TO SYMBOLS

## LEGENDE

## INTERPRETACION DE LOS SIMBOLOS



SYMBOL FOR STITCHING LINES  
REMARQUE CONCERNANT LES LIGNES DE PIQURES  
INDICACION PARA LINEAS DE PESPUNTE



SEAM ATTACHMENT POINT  
POINT DE RACCORD DE LA COUTURE  
PUNTO DE AJUSTE DE LA COSTURA



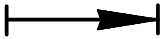
SEAM NUMBERS ARE MATCHING SYMBOLS AND DENOTE  
WHERE TWO PIECES SHOULD BE SEWN TOGETHER.  
LES CHIFFRES-REPERES INDIQUENT OU ASSEMBLER LES PIECES.  
LES CHIFFRES IDENTIQUES COINCIDENT.  
LOS NUMEROS DE COSTURA INDICAN DONDE LAS PIEZAS.  
LOS MISMOS NUMEROS CONCIDEN.



GATHER BETWEEN THE STARS.  
FRONCER ENTRE LES ASTERISQUES.  
EMBEBER ENTRE LAS ESTRELLAS.



EASE IN BETWEEN THE DOTS.  
SOUTENIR ENTRE LES POINTS.  
EMBEBER ENTRE LOS PUNTOS.



POSITION PLEATS IN DIRECTION OF ARROW.  
POSER LES PLIS DANS LE SENS DES FLECHES.  
PONER LOS PLIEQUES SEGUN LA FLECHA.



SYMBOL INDICATING THE BEGINNING OR END OF VENT.  
REPERE DE DEBUT OU DE FIN DE FENTE.  
MARCA PARA EL PRINCIPIO O FINAL DE LA ABERTURA.



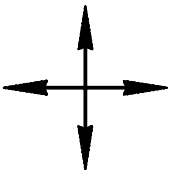
SLASH  
FENTE  
CORTE



BUTTONHOLE  
BOUTONNIERE  
OIAL



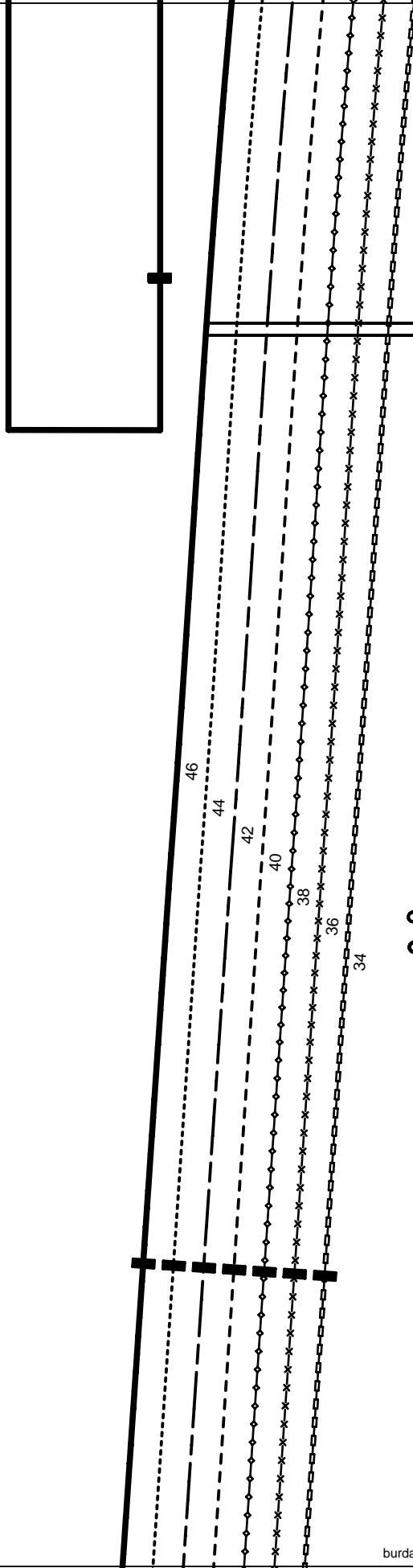
BUTTON OR SNAP  
BOUTON OU BOUTON-PRESSION  
BOTON O BROCHE DE PRESSION



SEE CUTTING DIAGRAMS FOR STRAIGHT GRAIN OF FABRIC  
SENS DU DROIT-FIL VOIR LES PLANS DE COUPE  
DIRECCION DEL HILO, VEANSE PLANOS DE CORTE

4a

LENGTHEN OR SHORTEN HERE  
RALLONGER OU RACCOURCIR ICI  
ALARGAR O ACORTAR AQUI



3

3a

CENTER FRONT SKIRT PANEL  
PIECE MILIEU DEVANT DE JUPE  
FALDA CENTRAL ANTERIOR

ON THE FOLD

DANS LA PLIURE DU TISSU  
CON CANTO DOBLADO



1 x

SEAM ALLOWANCE INCLUDED

AVEC VALEUR DE COUTURE  
CON MARGEN DE COSTURA

$\frac{5}{8}$ "

(1,5cm)

6000

Burda  
STYLE

[www.burdastyle.com](http://www.burdastyle.com)

2a

## 6000

SEAM ALLOWANCE INCLUDED  
AVEC VALEUR DE COUTURE  
CON MARGEN DE COSTURA

5/8" (1,5cm)



SIDE BACK SKIRT PANEL  
COTE DOS DE JUPE  
PIEZA LATERAL FALDA POST.

# 12

LENGTHEN OR SHORTEN HERE  
RALLONGER OU RACCOURCIR ICI  
ALARGAR O ACORTAR AQUI

### 2b



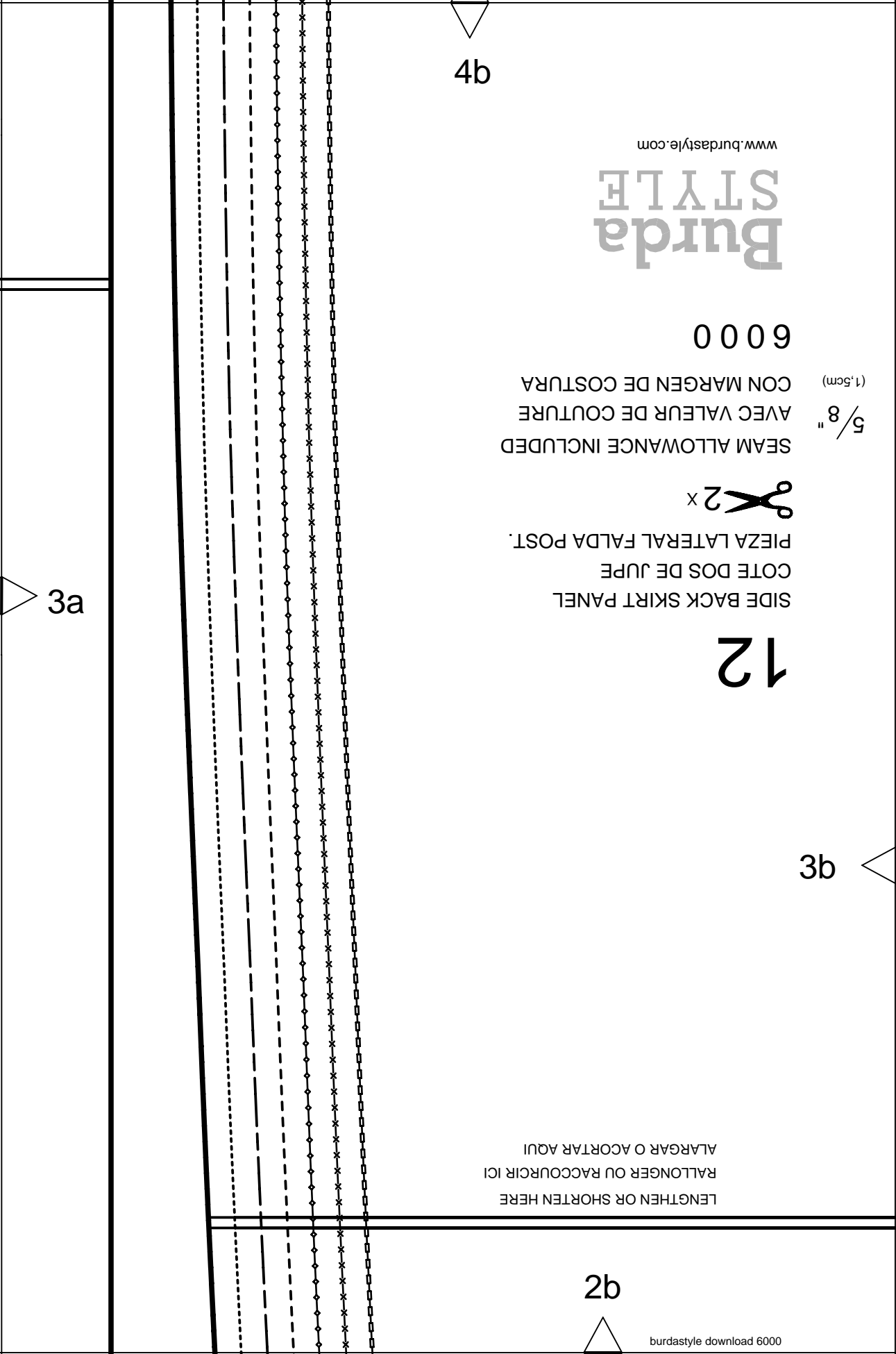
### 4b



### 3b



### 3a



4c



LEFT SLIT  
FENTE A GAUCHE  
ABERTURA IZQUIERDA



www.burdastyle.com

Burda  
STYLE

6000

SEAM ALLOWANCE INCLUDED  
AVEC VALEUR DE COUTURE  
CON MARGEN DE COSTURA

(1,5cm)

5/8"

ON THE FOLD  
DANS LA PLIURE DU TISSU  
CON CANTO DOBLADO



CENTER BACK SKIRT PANEL  
PIECE MILIEU DOS DE JUPE  
FALDA CENTRAL POST.

10

3c



LENGTHEN OR SHORTEN HERE  
RALLONGER OU RACCOURCIR ICI  
ALARGAR O ACORTAR AQUI

2c



STRAIGHT GRAIN  
DROIT FIL  
SENTIDO HILO

3b



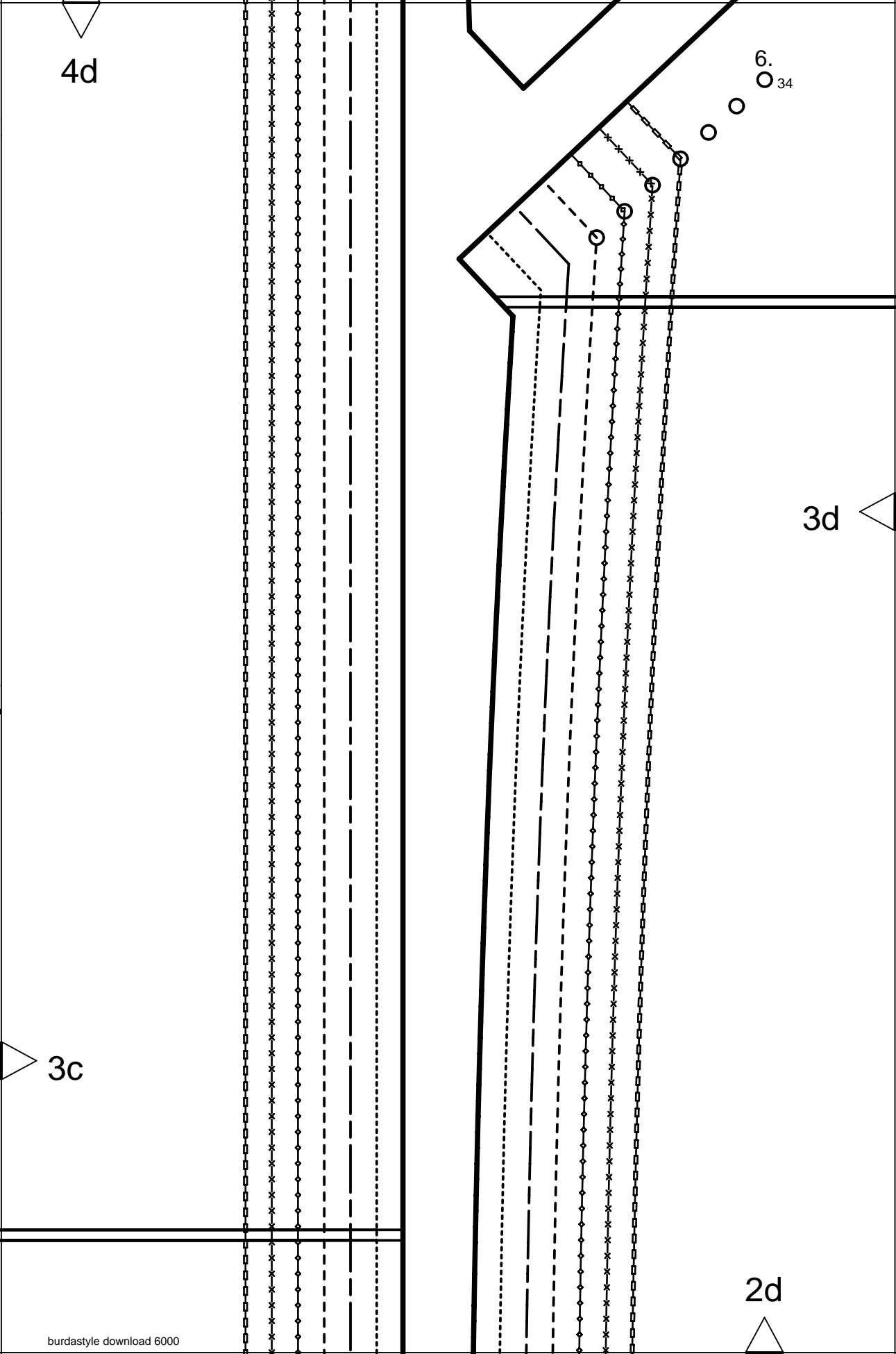
4d

6.  
34

3d

3c

2d



4e

FINISHED BUST	TOUR DE POITRINE	CONTORNO BUSTO
SIZE	34 36"	91cm
	36 37 $\frac{1}{2}$ "	95cm
	38 39"	99cm
	40 40 $\frac{3}{4}$ "	103cm
	42 42 $\frac{1}{4}$ "	107cm
	44 43 $\frac{3}{4}$ "	111cm
	46 45 $\frac{1}{4}$ "	115cm

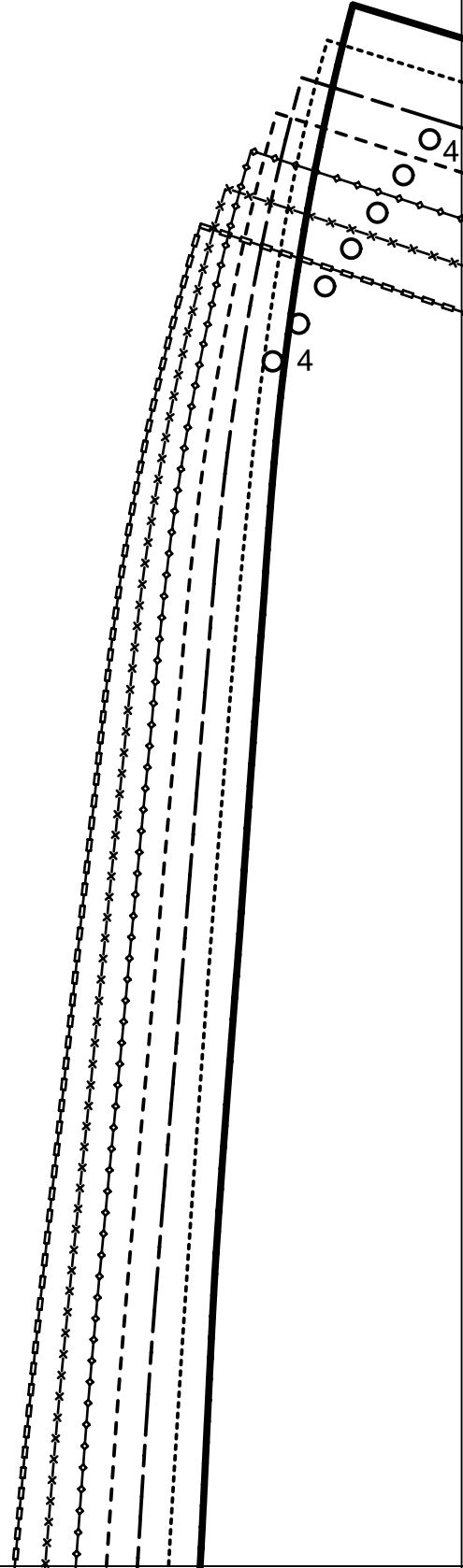
3e

LENGTHEN OR SHORTEN HERE  
 RALLONGER OU RACCOURCIR ICI  
 ALARGAR O ACORTAR AQUI

3d

STRAIGHT GRAIN  
 DROIT FIL  
 SENTIDO HILO

2e



STRAIGHT GRAIN  
DROIT FIL  
SENTIDO HILO

LENGTHEN OR SHORTEN HERE  
RALLONGER OU RACCOURCIR ICI  
ALARGAR O ACORTAR AQUI

8

CENTER BACK  
MILIEU DOS  
ESPALDA CENTRAL  
ON THE FOLD

CENTER BACK FOLD  
PLIURE DU TISSU MILIEU DOS  
CENTRO POST. CANTO DE DOBLEZ



1 x DANS LA PLIURE DU TISSU  
CON CANTO DOBLADO

FABRIC + LINING  
TISSU + DOUBLURE  
TELA + FORRO

5/8" (1.5cm)

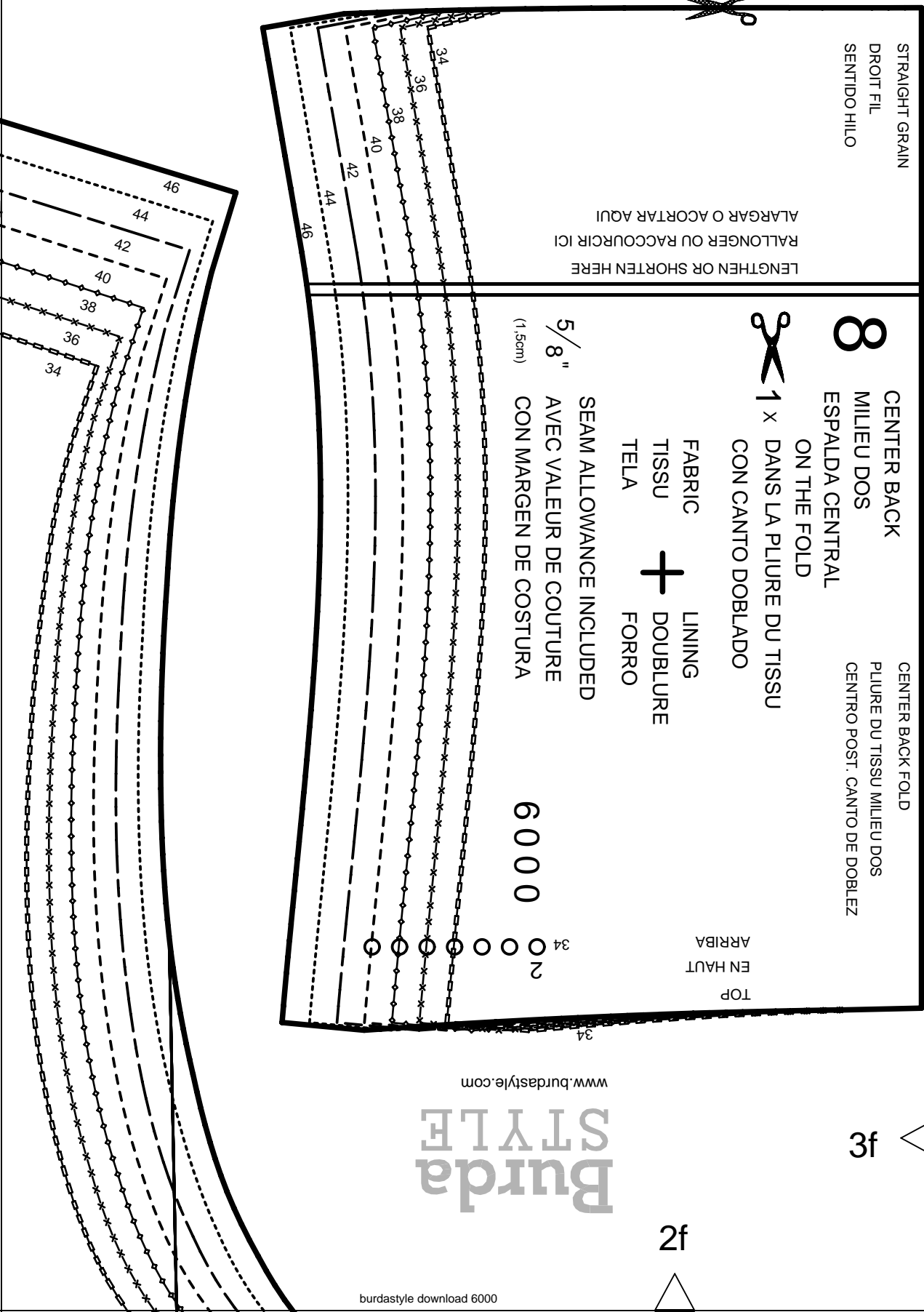
SEAM ALLOWANCE INCLUDED  
AVEC VALEUR DE COUTURE  
CON MARGEN DE COSTURA

6000

TOP  
EN HAUT  
ARRIBA

4f

3e



Burda  
STYLE

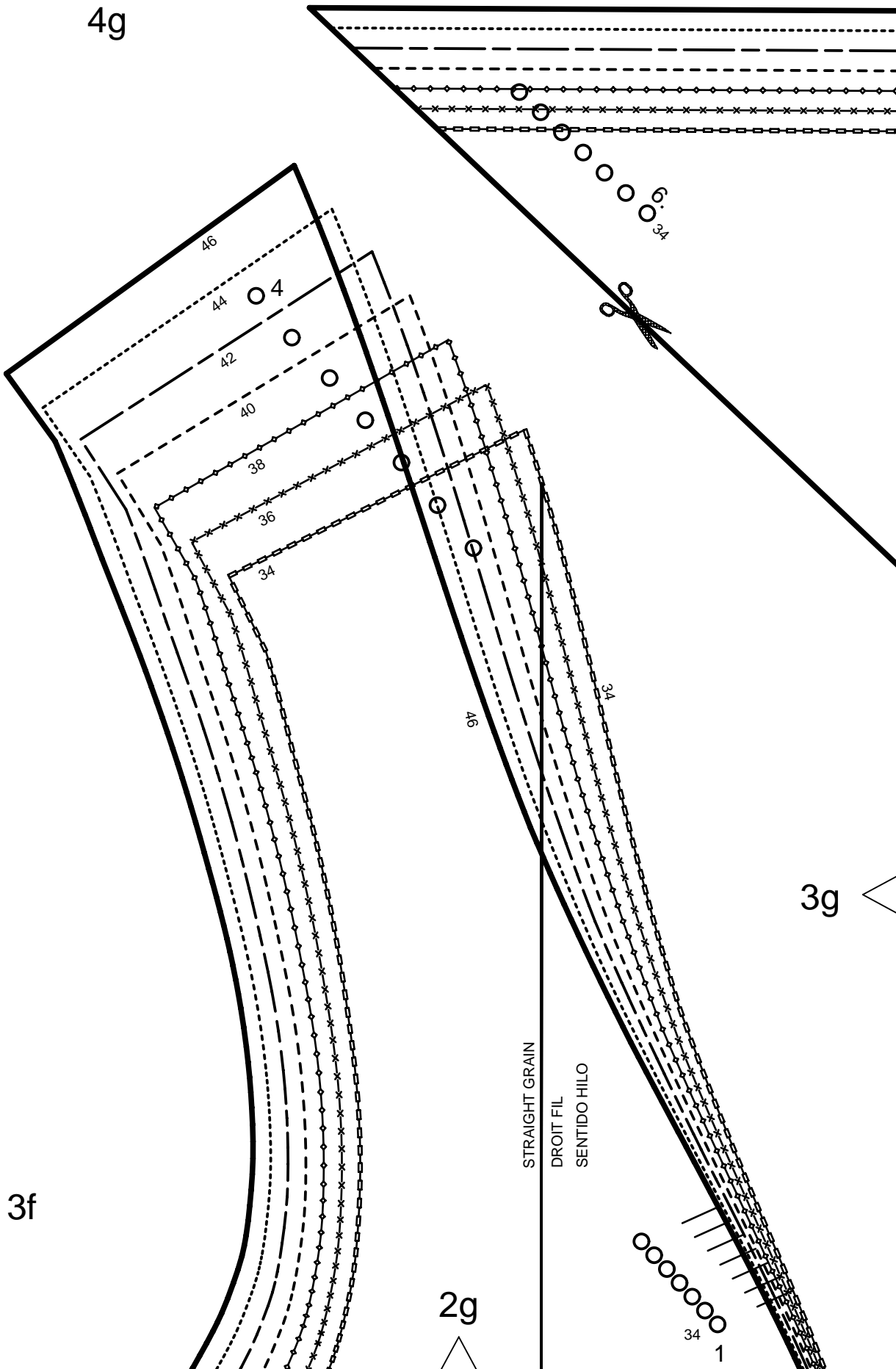
www.burdastyle.com

3f

2f



4g



3f

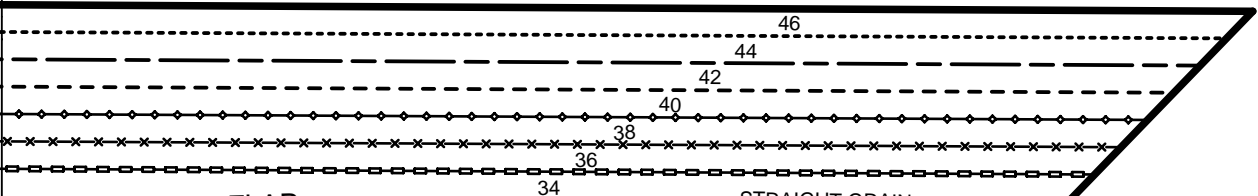
2g

3g

STRAIGHT GRAIN  
DROIT FIL  
SENTIDO HILO

34  
1

4h



7

FLAP  
RABAT  
CARTERA

STRAIGHT GRAIN  
DROIT FIL  
SENTIDO HILO



2 x

FABRIC  
TISSU  
TELA



LINING  
DOUBLURE  
FORRO

5/8"  
(1,5cm)

SEAM ALLOWANCE INCLUDED  
AVEC VALEUR DE COUTURE  
CON MARGEN DE COSTURA

Burda  
STYLE

www.burdastyle.com

6000

T

3g

STRAIGHT GRAIN  
DROIT FIL  
SENTIDO HILO  
FOLD  
PLIURE  
DOBLEZ

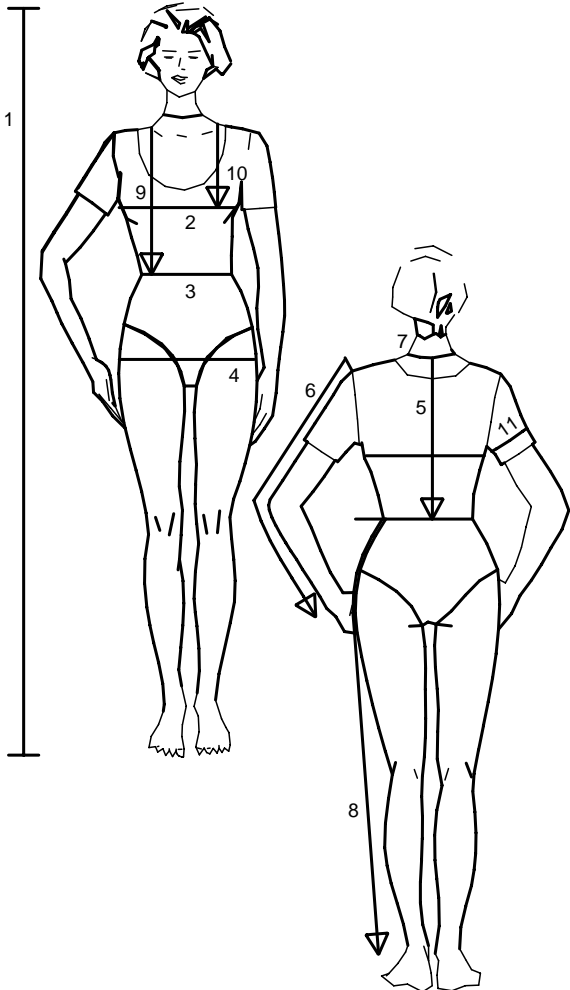
Burda  
STYLE

www.burdastyle.com

2h

3h

Size Taille Talla		32	34	36	38	40	42	44	46	48	50	52	54	56	58	60
1	inches	66 1/4	66 1/4	66 1/4	66 1/4	66 1/4	66 1/4	66 1/4	66 1/4	66 1/4	66 1/4	66 1/4	66 1/4	66 1/4	66 1/4	66 1/4
	cm	168	168	168	168	168	168	168	168	168	168	168	168	168	168	168
2	inches	30	31 1/2	33	34 3/4	36 1/4	37 3/4	39 1/2	41	43 1/2	45 1/2	48	50 1/2	52 3/4	55 1/4	57 1/2
	cm	76	80	84	88	92	96	100	104	110	116	122	128	134	140	146
3	inches	23	24 1/2	26	27 3/4	29 1/4	30 3/4	32 1/2	34	36 1/4	38 3/4	41	43 1/2	45 1/2	48	50 1/2
	cm	58	62	66	70	74	78	82	86	92	98	104	110	116	122	128
4	inches	32 1/2	34	35 1/2	37	38 3/4	40 1/4	41 3/4	43 1/2	45 1/2	48	50 1/2	52 3/4	55 1/4	57 1/2	60
	cm	82	86	90	94	98	102	106	110	116	122	128	134	140	146	152
5	inches	15 3/4	16	16 1/4	16 1/2	16 1/2	16 3/4	17	17 1/4	17 1/4	17 1/2	17 3/4	18	18 1/4	18 1/2	18 1/2
	cm	40	40,5	41	41,5	42	42,5	43	43,5	44	44,5	45	45,5	46	46,5	47
6	inches	23 1/4	23 1/4	23 1/4	23 3/4	23 3/4	24	24	24	24	24 1/2	24 1/2	24 1/2	24 3/4	24 3/4	24 3/4
	cm	59	59	59	60	60	61	61	61	61	62	62	62	63	63	63
7	inches	13	13 1/2	14 1/4	14 1/2	14 3/4	15	15 1/2	15 3/4	16 1/4	16 1/2	17	17 1/4	17 3/4	18 1/4	18 1/2
	cm	33	34	35	36	37	38	39	40	41	42	43	44	45	46	47
8	inches	39 3/4	40 1/4	40 1/4	40 3/4	41	41	41 1/2	41 1/2	41 1/2	41 3/4	41 3/4	41 3/4	42 1/4	42 1/2	42 1/2
	cm	101	102	102	103	104	104	105	105	105	106	106	106	107	108	108
9	inches	16 1/2	17	17 1/4	17 3/4	18 1/4	18 1/2	19	19 1/4	19 3/4	20 1/4	20 1/2	21	21 1/4	21 3/4	22 1/4
	cm	42	43	44	45	46	47	48	49	50	51	52	53	54	55	56
10	inches	9 1/2	9 7/8	10 1/4	10 3/4	11 1/8	11 1/2	11 7/8	12 1/4	12 3/4	13	13 1/2	14 1/4	14 1/2	14 3/4	15
	cm	24	25	26	27	28	29	30	31	32	33	34	35	36	37	38
11	inches	9 7/8	10 1/4	10 3/4	11 1/8	11 1/2	11 7/8	12 1/4	12 3/4	13 1/2	14 1/2	15	15 3/4	16 1/2	17 1/4	18 1/4
	cm	25	26	27	28	29	30	31	32	34	36	38	40	42	44	46



anglais

1. Height
2. Bust
3. Waist
4. Hip
5. Back length
6. Sleeve length
7. Neck width
8. Side leg length
9. Front waist length
10. Bust point
11. Upper arm circumf.

For dresses, blouses, coats and jackets select size according to bust measurement, for trousers and skirts according to hip measurement!

All burda patterns are prepared with ease allowance appropriate for style in question.

français

1. Stature
2. Tour de poitrine
3. Tour de taille
4. Tour des hanches
5. Long. du dos
6. Longueur de manche
7. Tour de cou
8. Long. côté pantalon
9. Long. taille devant
10. Profondeur de poitrine
11. Tour du bras

Robes, corsages, manteaux et vestes seront choisis d'après votre tour de poitrine les pantalons et les jupes d'après votre tour de hanches!

Tous les patrons sont établis avec l'aisance nécessaire selon le genre du modèle.

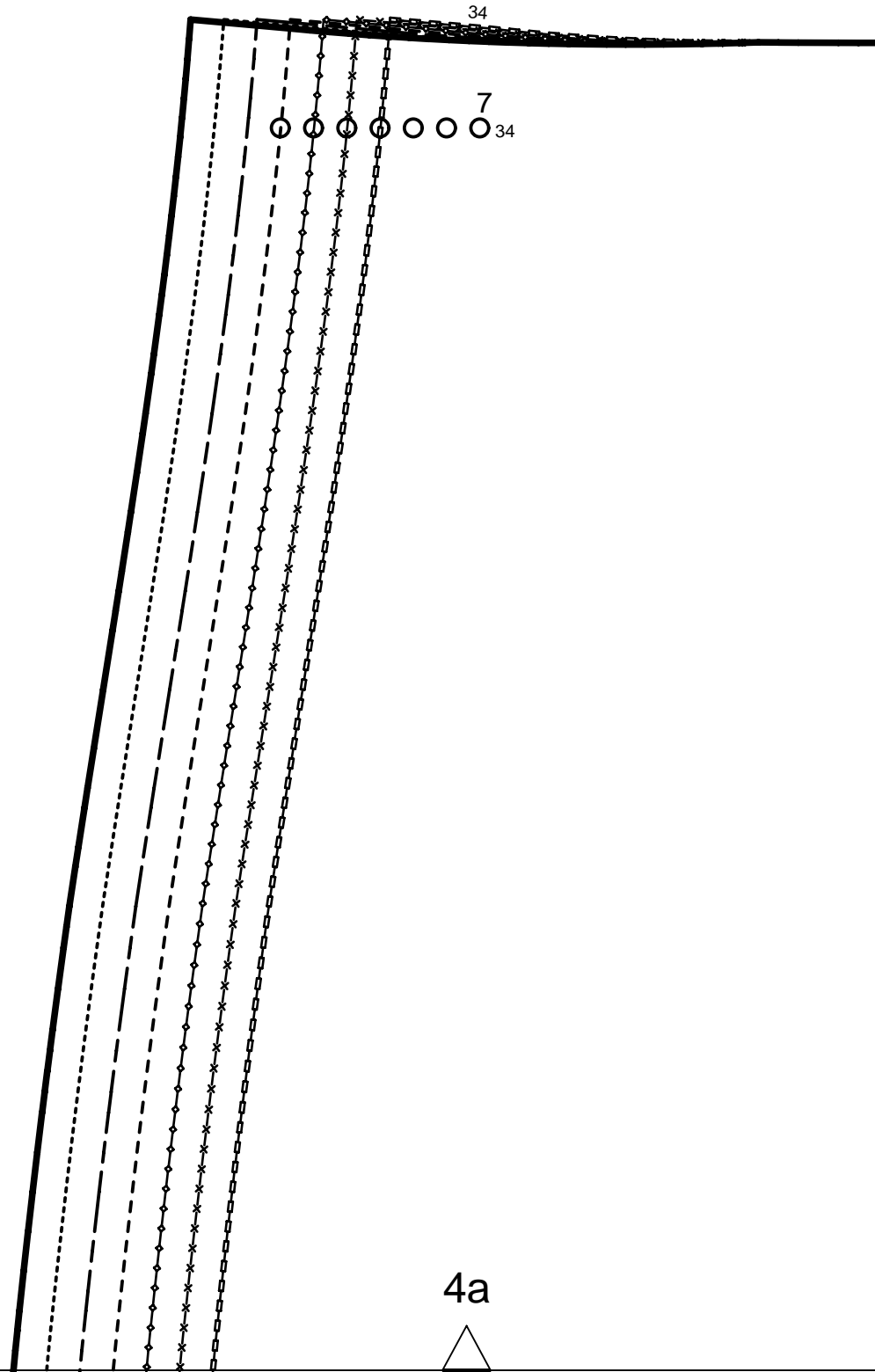
español

1. Estatura
2. Contorno busto
3. Contorno cintura
4. Contorno cadera
5. Largo espalda
6. Largo manga
7. Contorno cuello
8. Largo lateral del pantalón
9. Largo talle delantero
10. Altura de pecho
11. Cont. de brazo

La talla para los vestidos, blusas, abrigos y chaquetas, se determina de acuerdo con el contorno del busto. Los pantalones y las faldas, de acuerdo con el contorno de las caderas.

En el patrón-Burda se incluyen los márgenes para la holgura necesaria.

5a



4a

**Burda**  
**STYLE**  
 www.burdastyle.com

ATTACH PATTERN PIECE HERE  
 COLLER LA PIECE DU PATRON ICI  
 ENGANCHAR AQUI PATRON DE PAPEL

**11**

FACING  
 PAREMENTURE  
 VISTA

**6000**

5a

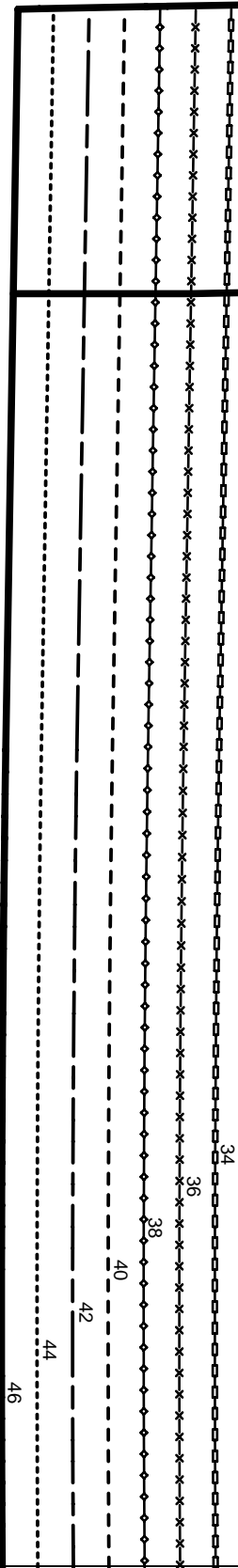


HEM ALLOWANCE  
1 5/8" (4cm)  
VALEUR D'OURLET  
MARGEN DE DOBLADILLO

HEM-FOLDLINE  
PLIURE DE L'OURLET  
DOBLADILLO-LINEA DE DOBLEZ

10

5b



4b

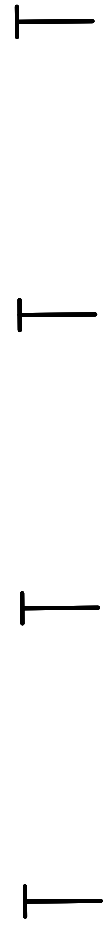




HEM ALLOWANCE  
1 <sup>5</sup>/<sub>8</sub>" (4cm) VALEUR D'OURLET  
MARGEN DE DOBLADILLO

HEM-FOLDLINE  
DOBLADILLO-LINEA DE DOBLEZ  
PLIURE DE L'OURLET

5c



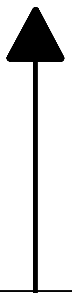
ATTACH PATTERN PIECE HERE  
COLLER LA PIECE DU PATRON ICI  
ENGANCHAR AQUI PATRON DE PAPEL

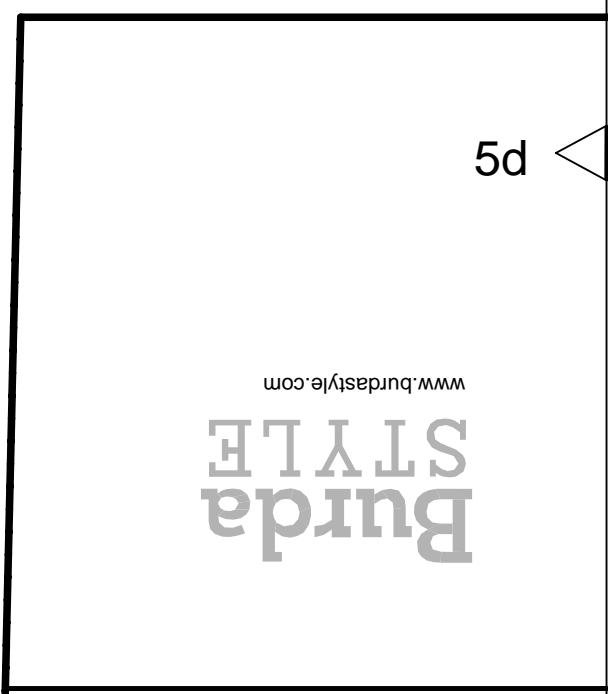
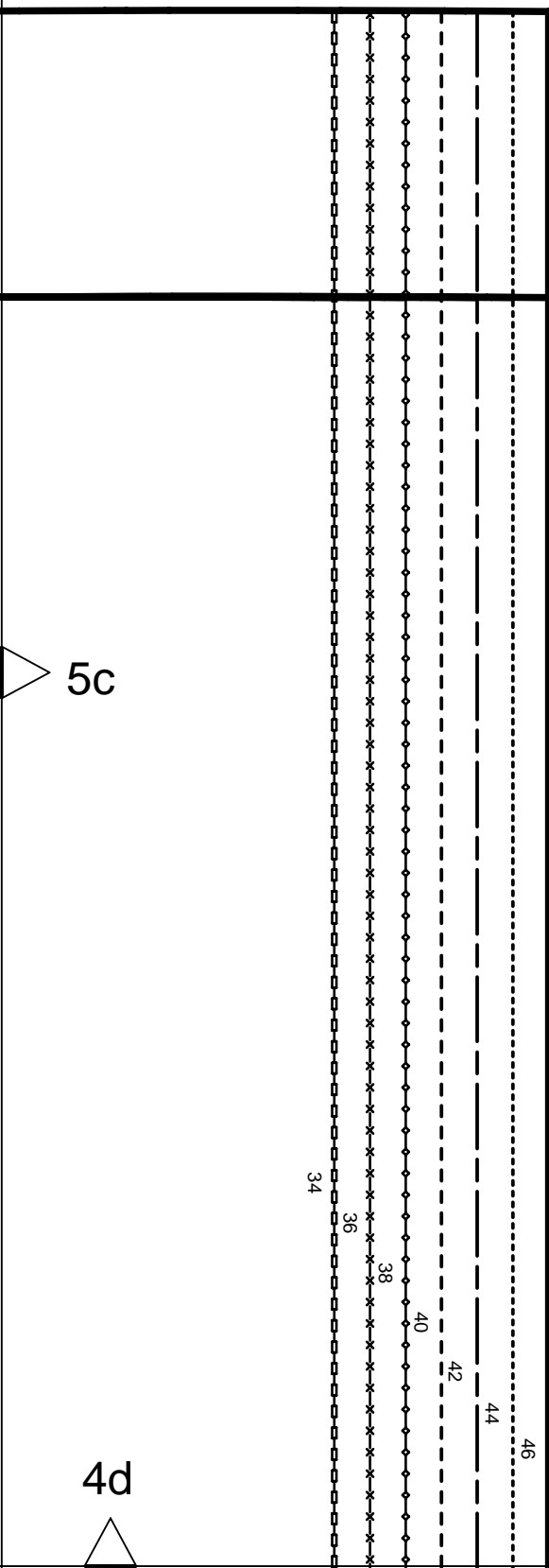
4c



ATTACH PATTERN PIECE HERE  
COLLER LA PIECE DU PATRON ICI  
ENGANCHAR AQUI PATRON DE PAPEL

5b





www.burdastyle.com  
**Burda**  
 STYLE

6

POCKET POUCH  
 FOND DE POCHE  
 BOLSILO INTERIOR

LINING  
 DOUBLURE  
 FORRO

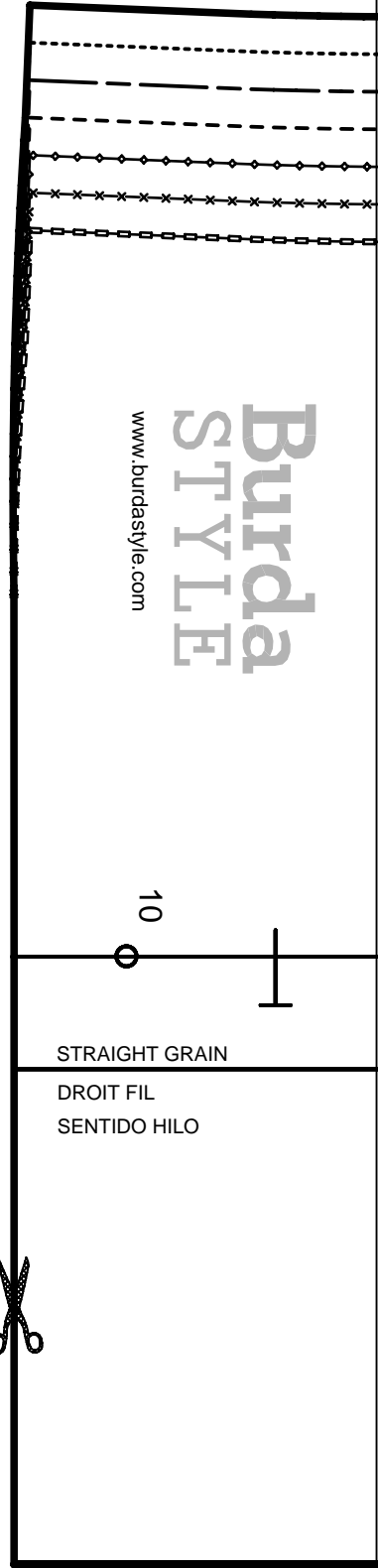
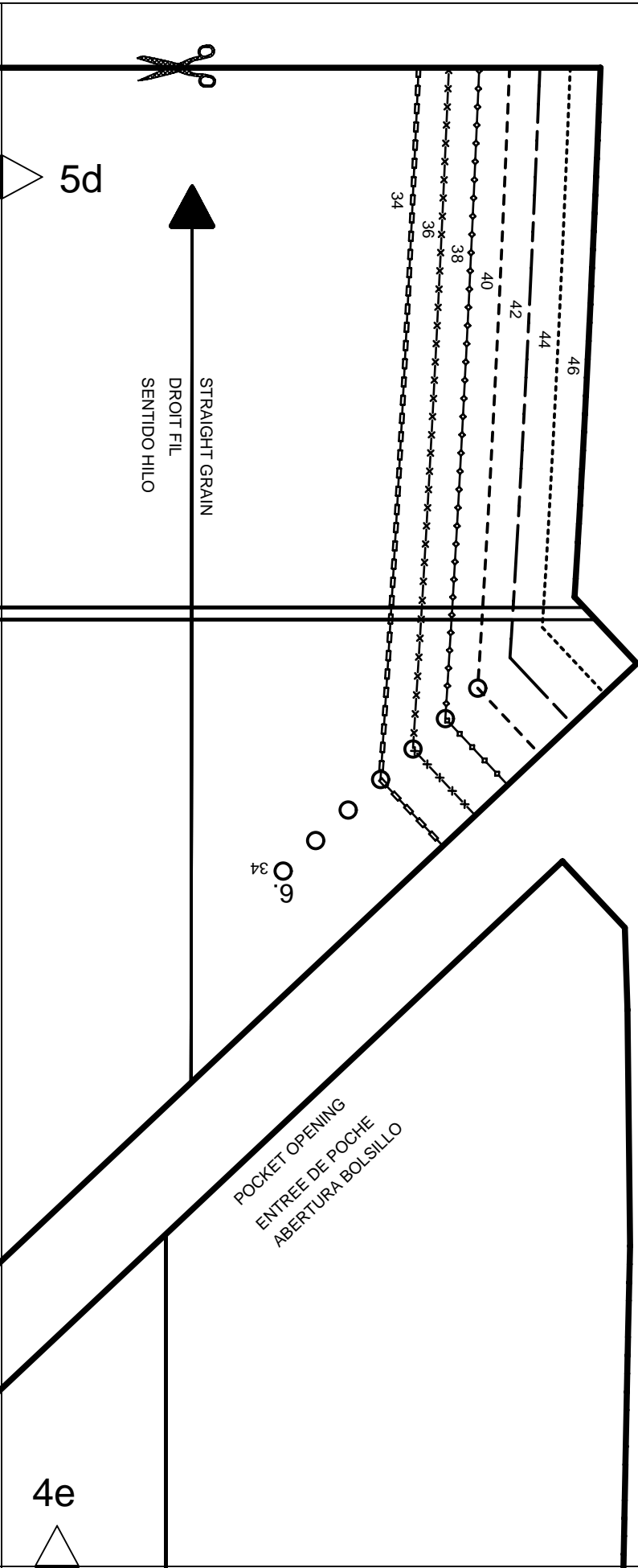
✂ 4x

SEAM ALLOWANCE INCLUDED  
 AVEC VALEUR DE COUTURE  
 CON MARGEN DE COSTURA

5/8" (1.5cm)

LENGTHEN OR SHORTEN HERE  
 RALLONGER OU RACCOURCIR ICI  
 ALARGAR O ACORTAR AQUI

6000





46

44

42

40

38

36

34

1

CENTER FRONT  
MILIEU DEVANT  
DELANTERO CENTRAL



SEAM ALLOWANCE INCLUDED  
AVEC VALEUR DE COUTURE  
CON MARGEN DE COSTURA  
5/8" (1.5cm)  
6000

LENGTHEN OR SHORTEN HERE  
RALLONGER OU RACCOURCIR ICI  
ALARGAR O ACORTAR AQUI

CENTER FRONT  
MILIEU DEVANT  
CENTRO DELANTERO

FACING FOLD  
PAREMENTURE PLIURE  
VISTA DOBLEZ



46

34

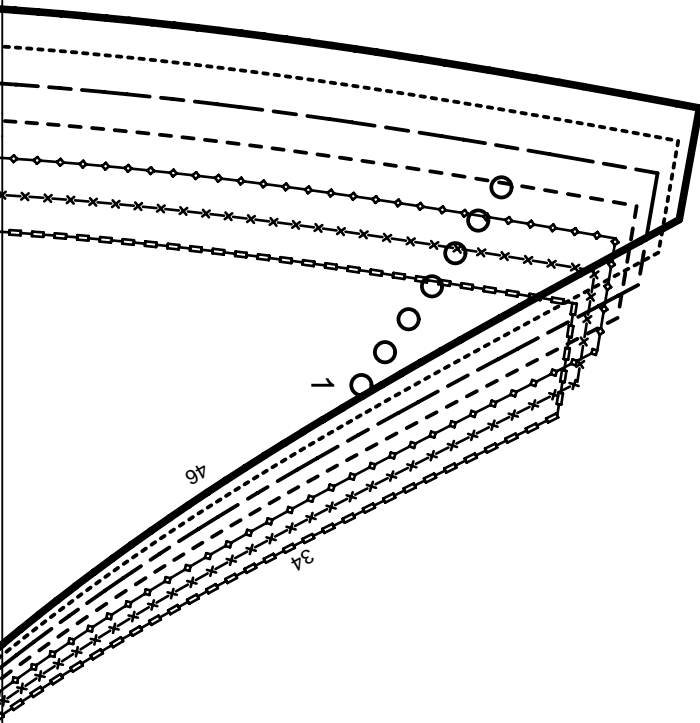
5e

4f

5f

# Burda STYLE

www.burdastyle.com



5g

# 15

CENTER FRONT  
MILIEU DEVANT  
DELANTERO CENTRAL  
FORRO

LINING  
DOUBLURE  
FORRO



SEAM ALLOWANCE INCLUDED  
AVEC VALEUR DE COUTURE  
CON MARGEN DE COSTURA  
6 0 0 0

5/8"  
(1.5cm)

LENGTHEN OR SHORTEN HERE  
RALLONGER OU RACCOURCIR ICI  
ALARGAR O ACORTAR AQUI

STRAIGHT GRAIN  
DROIT FIL  
SENTIDO HILO



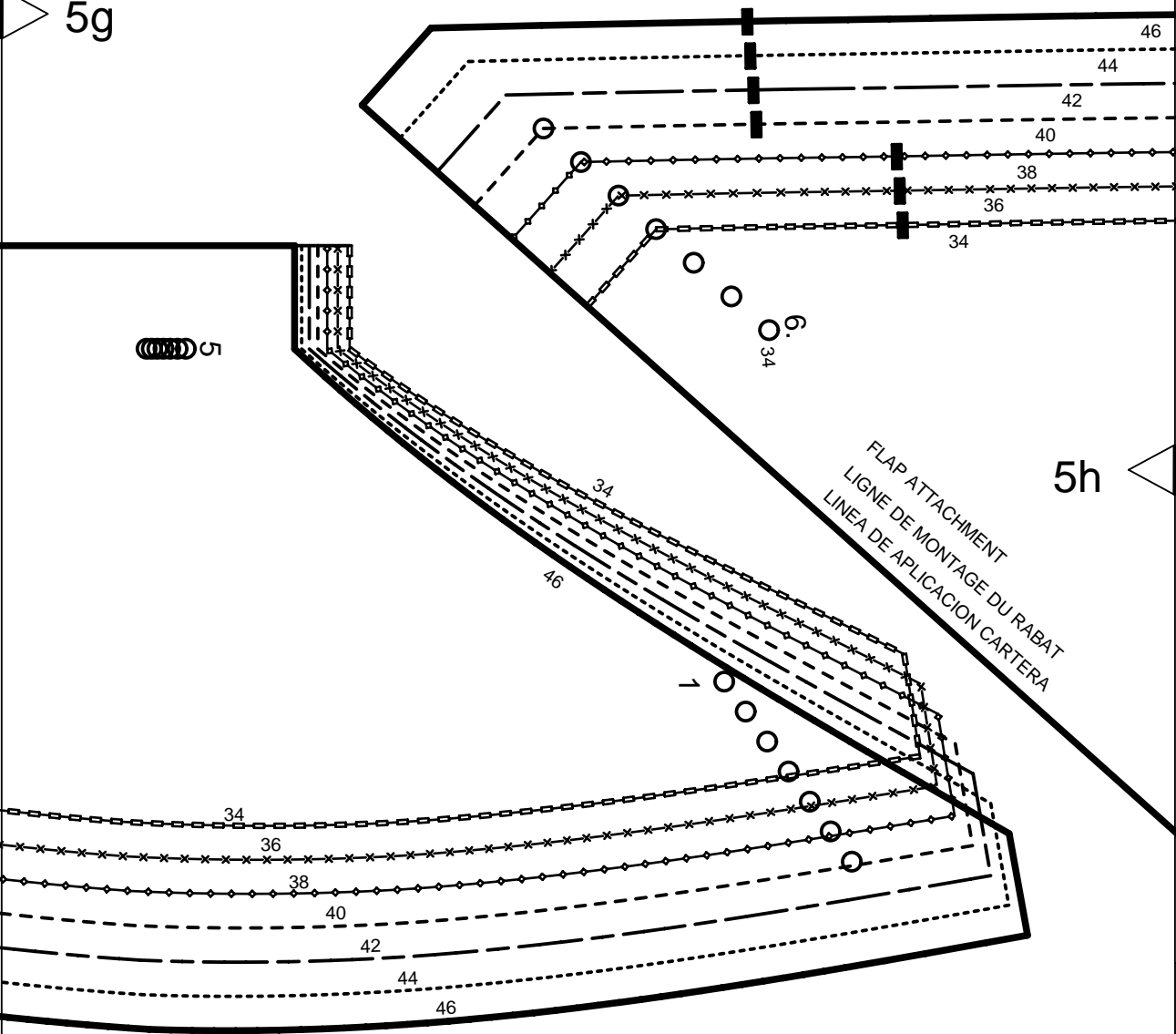
Burda  
STYLE  
www.burdastyle.com

5f

4g

ATTACH PATTERN PIECE HERE  
COLLER LA PIECE DU PATRON ICI  
ENGANCHAR AQUI PATRON DE PAPEL

5g



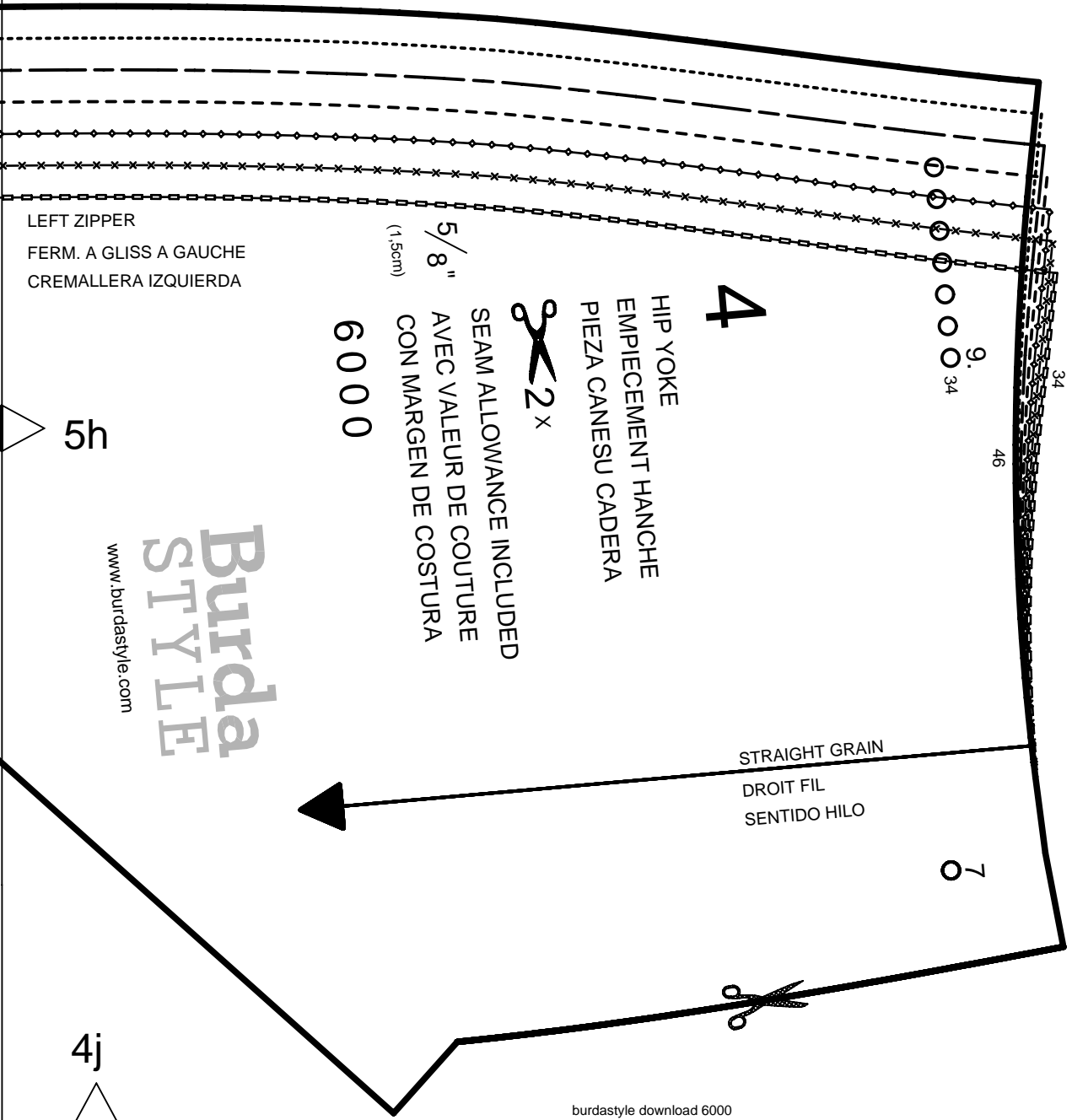
5h

4h

# 13

UNDERLAP  
SOUS-PATTE  
PATA INFERIOR  
6000

FOLD  
PLIURE  
DOBLEZ



LEFT ZIPPER  
FERM. A GLISS A GAUCHE  
CREMALLERA IZQUIERDA

5/8" (1.5cm)



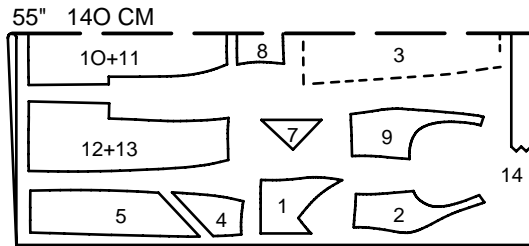
SEAM ALLOWANCE INCLUDED  
AVEC VALEUR DE COUTURE  
CON MARGEN DE COSTURA  
6000

4  
HIP YOKE  
EMPIECEMENT HANCHE  
PIEZA CANESU CADERA

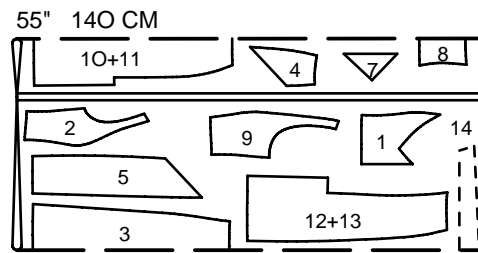
STRAIGHT GRAIN  
DROIT FIL  
SENTIDO HILO

Burda  
STYLE  
www.burdastyle.com

PATTERN LAYOUTS  
PLANS DE COUPE  
PLANOS DE CORTE

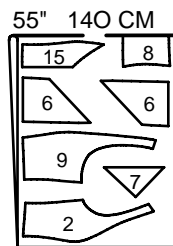


42-46



34-40

LINING  
DOUBLURE  
FORRO



34-46